

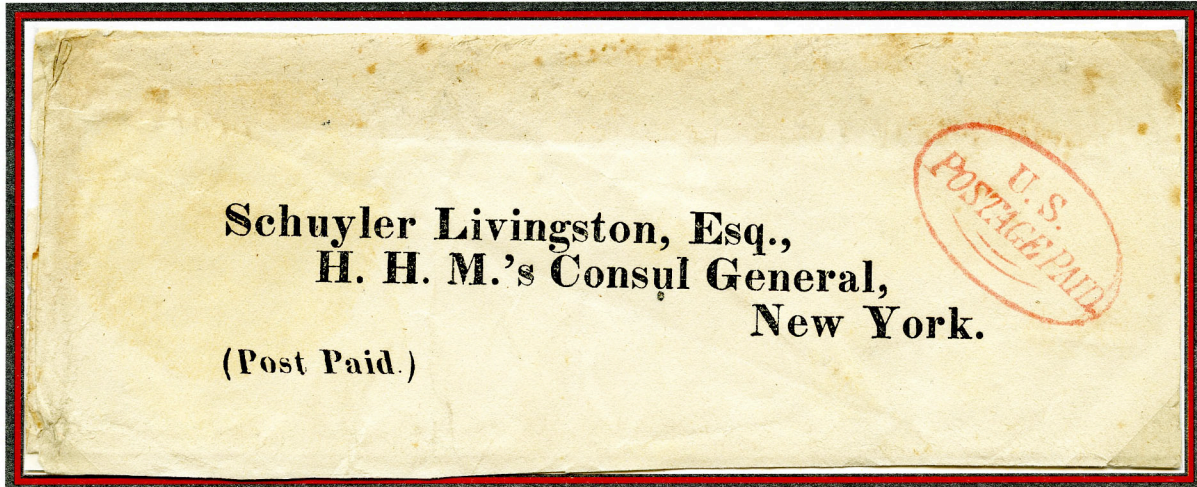
Introduction To Section Four - California And Hawaii

During the early years of the California gold rush, over 90% of the letters and virtually all printed matter was delivered by express companies because of the inadequacies and delinquencies of the U. S. postal system. In 1851, there were only 53 post offices in all of California and only 25 of those in the mining regions, even though there were several hundred towns and several hundred mining regions. Illustrating the importance of the mails to the people, many steamship, stage and express companies and local posts carried mails without a subsidy. Those companies charged fees and those fees made a significant contribution to their profit.

These express companies brought everyone their news by way of letters and newspapers. Until competition of the transcontinental telegraph in October 1861, this was the only way Californians could receive the news, current events, pamphlets and even small books.

This frame will examine those express companies as well as the post office through examples of printed matter items showing where and how they were transported.

Newspaper Wrapper From Hawaii



Honolulu, Hawaii to New York, NY

C. 1852

This wrapper most likely contained a small newspaper or pamphlet weighing under three ounces, that was sent from Honolulu, Hawaii postpaid to Hawaii's Consul General in New York City. Wrappers used from Hawaii are uncommon with fewer than five recorded.

The red oval marking to the right of the wrapper is the very uncommon 'U. S. POSTAGE PAID' with only four examples recorded, one on a Hawaii Missionary cover. The known date of use of this marking is only in 1852 which helps in establishing the date for the wrapper.

Express Companies And Forwarders

Extensive study has shown that G. B. Post did not use his marking on any letters or parcels other than those going to or from Hawaii.

Henry Whitney was the postmaster of Honolulu, Hawaii from 1850 to 1856. He had a stationery store which he operated that was located next to the Post Office. Whitney also had a close relationship with G. B. Post and appointed him the Honolulu Post Office mail agent at San Francisco. In all probability, Post, as Whitney's San Francisco agent, was sending newspapers to Whitney for sale in Whitney's stationery store. This is surely a surviving example.

One of two recorded examples of the Wells Fargo & Co Honolulu blue oval.

The timely movement of newspapers and other sorts of printed matter back and forth the 2500 miles between San Francisco and Honolulu, Hawaii was not only a difficult task but one of considerable cost. There was no postal route east to west and the route west to east had limited capacity so the post office gladly "allowed" express companies and private forwarders to do the necessary job. The best known express company was Wells Fargo & Co. and the dominate forwarder was G. B. Post & Co.



San Francisco, CA to (Honolulu, Hawaii)

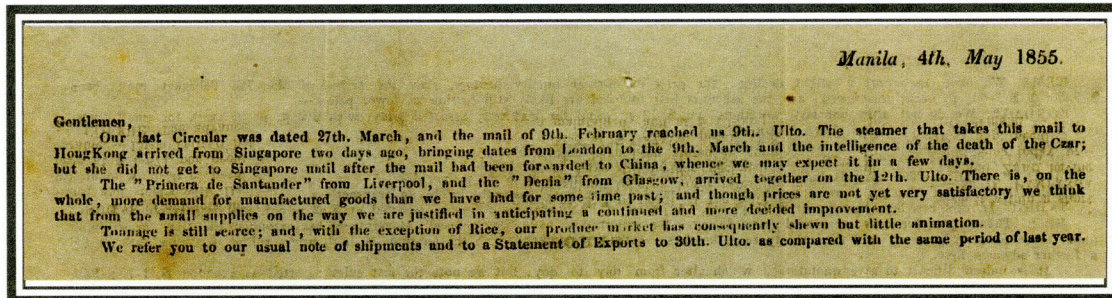
18 September 1855

Honolulu, Hawaii to (San Francisco, CA)
24 July 1858

Printed Circular
To Hawaii

4 May 1855

Printed Circular Inbound To The Hawaiian Islands



25% Reduction

Detail of the masthead of the printed circular.



Manila, Philippines via San Francisco to Honolulu, HI

4 May 1855

This packet contains two different printed circulars that were brought by private ship from Manila, Philippines by great circle route to San Francisco, a route that did not go close to the Hawaiian Islands. Upon arrival, the packet was given to the forwarder, "G. B. Post & Co," the San Francisco agent for The Regular Dispatch Line (RDL), which operated solely between San Francisco and Hawaii. The RDL did not have a mail contract with the post office but the Honolulu postmaster and his San Francisco agents favored the RDL. One of the ships in the employ of the RDL in 1855 was the *Bark Yankee*. An agent of G. B. Post most likely applied the marking "PER BARK 'YANKEE.'" indicating the ship to carry it to Hawaii.

Only two examples of the "PER BARK 'YANKEE.'" marking are recorded.

Prices Current

Earliest Known Prices Current From Militarily Ruled California

New To Philately

30 August 1849

Earliest Recorded Prices Current From Militarily Ruled California

SAN FRANCISCO LETTER SHEET PRICE CURRENT			
AND REVIEW OF THE MARKET.			
VOL. I.		SAN FRANCISCO, AUGUST 30, 1849.	
NO. 1.			
WILLIAM W. GALLAGHER, EDITOR AND PROPRIETOR. OFFICE CORNER MONTGOMERY AND WASHINGTON STREETS.			
ASHES, per lb.	55 a 65c	FISH, cont'd.	
Pais and Pearls, none a ..		Salmon,	10 a 12
BEESWAX,	10 a ..	Mackerel, no. 1, per bbl.,	15 a ..
BONES AND SKINS,		" 2, " " " "	10 a ..
Bones, men's light pig's-hair,	230 a ..	" 3, " " " "	30 sale
" heavy " " "	22 a 25	Sardines, 1 box, per doz.	11 a 12
Buffing, fine, per doz.,	25 a 28	FATS,	
" heavy " " "	22 a 24	" Lard,	6 a 6 1/2
CANNERS,		" Miscel.,	5 a ..
Spouts, per lb.,	60 a 70c	" Blason,	7 a ..
Sheeting, " " "	22 a 28c	Currents, per lb.,
Hull's Patent,	22 a 27c	Almonds,	15 a 18c
COALS, no house,		" soft shell, per lb.,	18 a 25c
Liverpool, per chald.,	250 a 40	Eggs, Turkey,	25 a 30c
Lehigh,	40 a 45	Walnuts,	10 a 11c
Ohio, per lb.,	12 a 16c	Peanuts,	25 a 28c
American Sweet, per lb.,	25 a 40c	Lemons, per box,	85 a 91
Spanish,	45 a 48c	Oranges, " " "	6 a ..
COFFEE,		Dried apples, per lb.,	25 a 30c
Brazil, per lb.,	7 a 9c	Peaches, with stones,	10 a ..
Java, " " "	8 a 10c	" clear,	25 a 35c
BRANDY,		Brandy fruits, none
American tarred, per lb.,	12 a 14c	HAY, per hund.,	23 a 4
Manilla Hoop, " " "	17 a 20c	Honey, per bbl., 150 a 82 per gallon,
DOMESTIC GOODS,		LIQUOR, per bbl.,	210 a 12
Sheetings, brown, per yd.,	8 a 11c	LIQUOR, cont'd.	
" black, " " "	8 a 14c	Beyons Duck, light per piece	12 1/2 13
Osnaburgs, cotton, " " "	8 a 10c	" heavy, " " "	13 a 20
Cotton Belts, twill do.,	10 a 12c	Diapers, Russia,	3 a 5c
Cotton Bel Ticking, " " "	20 a 25c	Brown sheetings, per yd.,	15 a 20c
Calicoes, blue,	7 a 12 1/2c	LIQUORS,	
" fancy bright col'd,	7 a 10c	Brandy, J. J. Dupuy, pr gal	22 1/2
" French,	16 a 22	" Otard,	3 a ..
Flannel Shirts, blue and	" Seguette,	2 1/2 a 2 1/2
red, per doz.,	24 a ..	" Cass, pr doz.,	10 a 12
Cotton velvets, black, per	Rum, Jamaica, no sale,
yd.,	40 a 50c	Old Swan, per gal.,	1 1/2 a 2
Satinets, per yd.,	45 a 75c	" Cases, pr doz.,	7 a 8
Cloths, blue and scarlet,	Older Spirits, pr gal.,	50 a 75c
per yd.,	23 a 4	Old Brand London, pr doz	25 1/2
Blackets, blue Mackinaw,	" Philad.,	5 1/2 a 6
per pair,	5 a 8	Older Champ, pr doz.,	8 a 10
do. red, do. do.,	10 a 13	Whines, Madeira, pr gal.,	11 a 2
do. white, do. do.,	4 a 8	Champ "Heibick" pr bush	15 a 20
do. white, do. do.,	5 a 20	Anchor,	14 a
DRUGS AND MEDICINES,		Sherry, pr gal.,	1 1/2 a 1 1/2
Alum, per lb.,	16 a 20c	Marselles Madeira, pr gal	75 a 87 1/2
Aloes, Caps,	2 a 2 1/2	Pure Port,	22 1/2 a 24
Balsam Copiva,	2 a 3	Imitation Port,	90c
Brimstone,	40 a 50c	Muscato,	75 a 81
Campbor,	22 1/2 a 3	Dry Malaga,	75 a
Cinnamon,	75 a 100c	Sherry,	25 a
ESSENCE OF,		Claret pr B/F pipe,	22 1/2 a
Gum Arabic,	8 1/2 a 2	" St. Julien, pr doz.,	5 a
Ipecac,	3 a 3 1/2	" Mebeo,	5 a
Jalap,	3 a 3 1/2	" Chateau Margaux pr d	5 a
Oil Lemon,	15 a 20	Lemon Syrup, pr doz.,	11 a
" Vitriol,	75 a 100c	Soda Water,	4 1/2
Castor Oil, per doz qts.,	11 1/2 a 12	Molasses,	40 a
Quicksilver, per lb.,	1 25 a 4	West India, pr gal.,	50 a
Soda, S. C., per lb.,	75 a 100c	Sugar House,	20 a
Quinine, per oz.,	25 a 3	" Copper, pr lb.,	40 a
Lozenges, doz.,	24 a 25	Sheet Iron, Am.,	20 a
PATENT MEDICINES,		" Russia, pr lb.,	45 a
Sarsaparilla, Samsel, doz.	20 a ..	Sheet Zinc, pr lb.,	20 a
" Townsend's,	30 a ..	Pig Lead,	7 a
Cholagogue, Dogwood,	30 a ..	Bar " " "	10 a
Sellite powder, tin boxes,	Bacon Tin,	20 a
doz.,	51 a 6	Tin Plates, IX pr box,	25 a
FEATHERS,		Bar Iron, American, pr lb.,	7 a
Live geese, per lb.,	50 a 55c	English,	5 a
Dry Cal, per quintal,	85 a 6		

This printed sheet is new to philately having been found in 2008 in a collection of western Americana, its philatelic importance unnoticed. It is shown with this exhibit for the first time. The year date in the masthead is incorrect, being surely a type setting mistake. This can be confirmed by the reference made to the arrival date for the sailing ship the Rhone, as well as searches of the business directory for San Francisco for 1850.

This prices current was published August 30, 1849 and lists the prices of virtually all commercial products during the height of the gold rush. The marking in the red oval is a new, formerly unlisted, forwarders marking for "ROBT Wells & Co. SAN FRANCISCO, U CALIF."

The circular was most likely placed on a sailing ship and routed privately through New York to Boston. The company, Appleton in Boston, was owned by Nathan Appleton who was instrumental in building a large textile empire. With the gold rush fully underway, Appleton needed information on the price of goods in San Francisco so as to best sell large amounts of his product, which Appleton did.

San Francisco, CA to Boston, MA
August 1849

NTP



Discovery copy of the
ROBT WELLS & Co.
San Francisco, U Calif
forwarding mark.



Printed Circular

Over 3500 Miles - Five Cents Per Ounce

1 July 1851 - 30 September 1852

5¢ Domestic Circular Rate For Over 3500 Miles

One of the least common rates during the period of the 1850's is for printed circulars which traveled over 3500 miles. This rate is what established the rate basis for the printed circular on the following page which went from San Francisco. Since the circular on the following page traveled over 3500 miles and was carried by a private ship, the rate was 5¢.



San Francisco, CA to Boston, MA

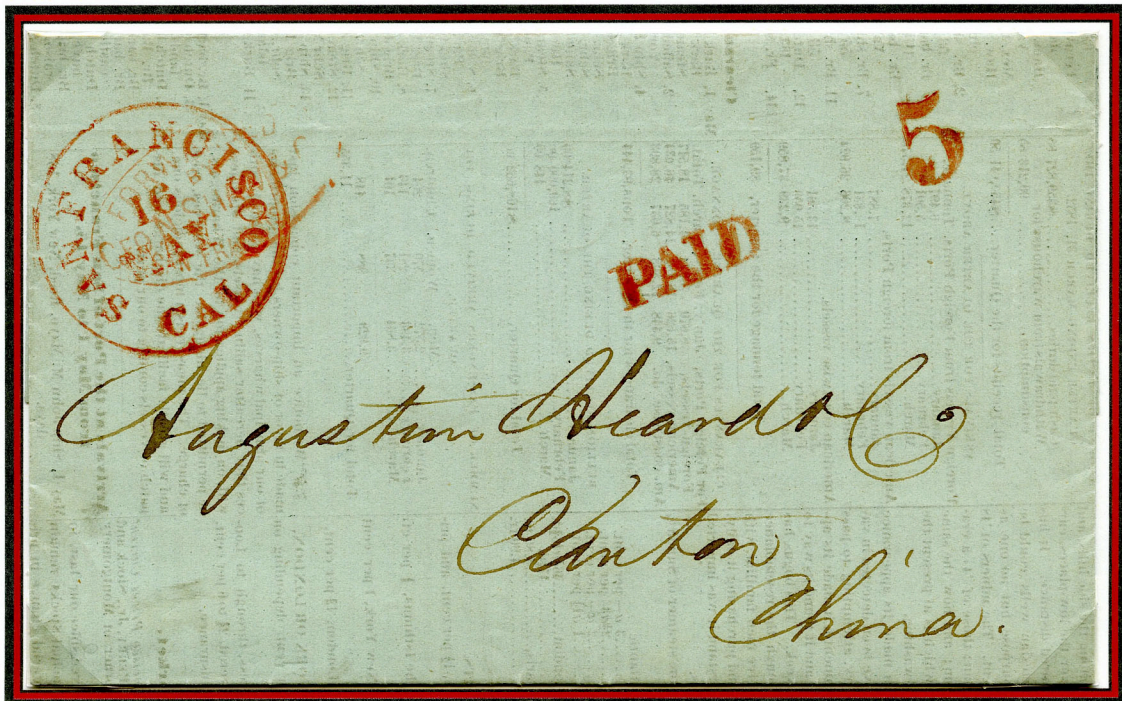
1 July 1852

Four stampless examples of the 5¢ rate for over 3500 miles are recorded.

Printed Circular
Private Ship Rate To China - Five Cents

16 May 1852

The Only Recorded Printed Circular Carried At The Private Ship Rate of 5¢ To China



San Francisco, CA to Canton, China

16 May 1852

The postal laws of 1825, which were in effect in May 1852, specified that mails carried outside the United States on private ships would be charged the then current domestic rate which, in this case, was 5¢ for over 3500 miles.

The above circular is a prices current and shipping list from 'Geo. N. Shaw & Co.' to Canton, China. Shaw was a forwarding agent for the mails and their red forwarders mark appears underneath the San Francisco CDS. It appears Shaw's representative took the circular to the San Francisco post office and paid the domestic rate (also private ship rate) for a circular over 3500 miles which was 5¢.

The post office was obligated to send the circular by the quickest route - in this case a private ship sailing from San Francisco. The circular was taken to the docks and placed on a private ship bound for China. The absence of any other markings on the cover confirms transportation by private ship. Had the circular gone through British or French mails, there would be a confirming transit mark somewhere on the cover, which there is not.

Printed Circular
Western Express Companies

10 August 1853

Printed Circular, Without Handwriting, Carried Solely By Express Companies

SOUTH FORK CANAL [and] BRADLEY, BERDAN & Co.



Diamond Springs, CA to Willow Springs, CA

10 August 1853

Thirty-one of these printed circulars were sent to companies “incorporated for the purpose of conducting water from the streams to the mines on elevated grounds, for mining purposes.” The circular calls for a meeting to adopt measures to petition the U. S. Congress for appropriate rights-of-way through public lands for canal projects.

Examples of printed circulars, without handwriting, sent by express companies are uncommon due to the high costs involved. In this case, the cost was 50¢, compared to 1¢ if it had been sent through the regular mails. The expense was probably justified due to the importance of the meeting.

This is the only recorded example of a printed circular carried by a California express company.

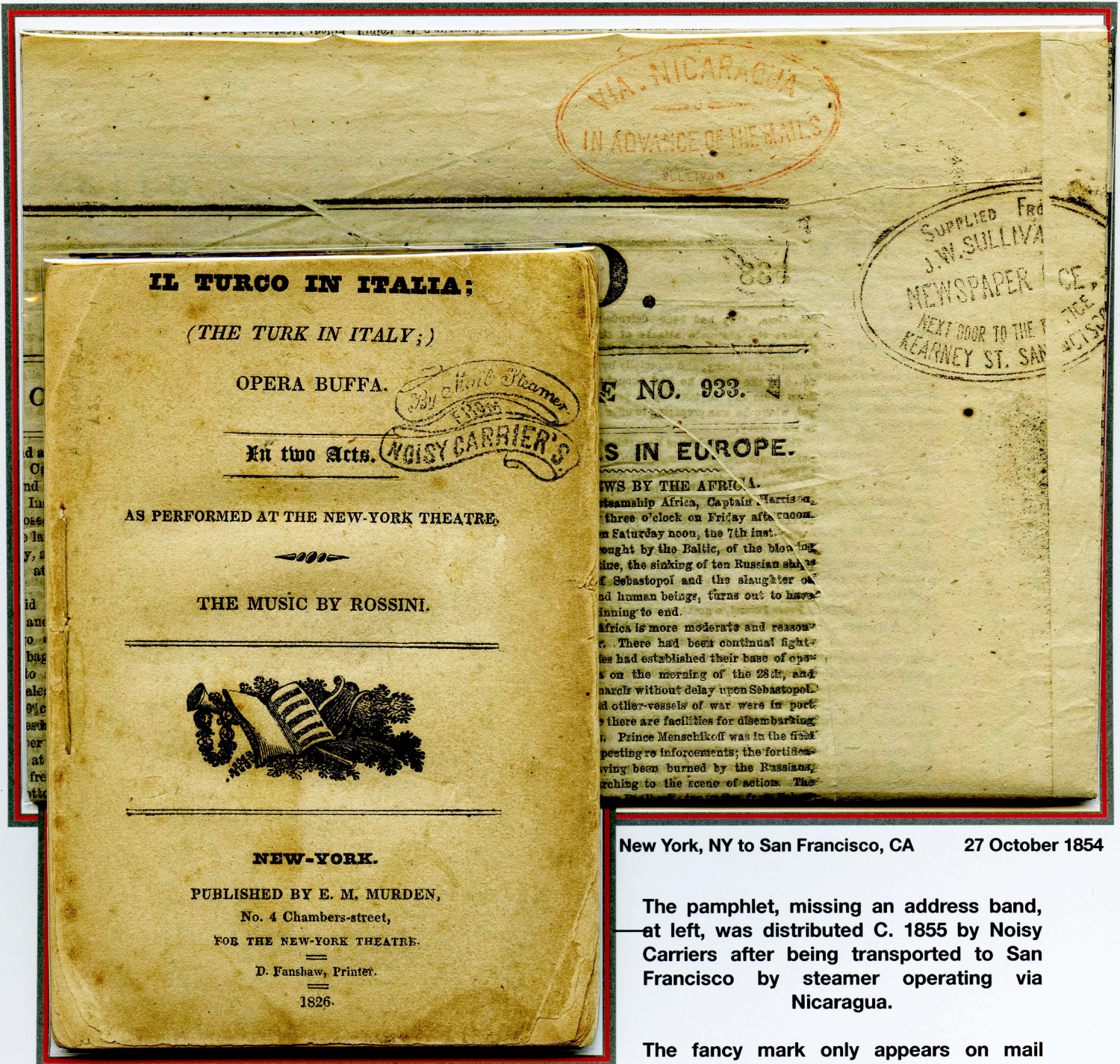
Newspaper And Pamphlet
Letter Bag Operators

Pamphlet - New To Philately
1850 - 1857

Letter Bag Operators

The steamship lines that serviced San Francisco carried mail, even though they received no subsidies from the U.S. government. This gave rise to "letter bag operators," a phenomenon peculiar to San Francisco. The operators would, for a small fee, deliver a person's mail to or from any steamer on its sailing or arrival date. The most prominent operator was Charles P. Kimball, proprietor of Noisy Carriers. Kimball worked closely with the Vanderbilt Line which operated across Nicaragua. Kimball adopted the same slogan as Vanderbilt "Via Nicaragua, in Advance of the Mails" first using the slogan in a red oval marking which appears on the newspaper below.

The newspaper below is The New York Herald and was probably on top of a bundle handled by Noisy Carriers.



New York, NY to San Francisco, CA 27 October 1854

The pamphlet, missing an address band, at left, was distributed C. 1855 by Noisy Carriers after being transported to San Francisco by steamer operating via Nicaragua.

The fancy mark only appears on mail handed by Noisy Carriers.

Printed Circular

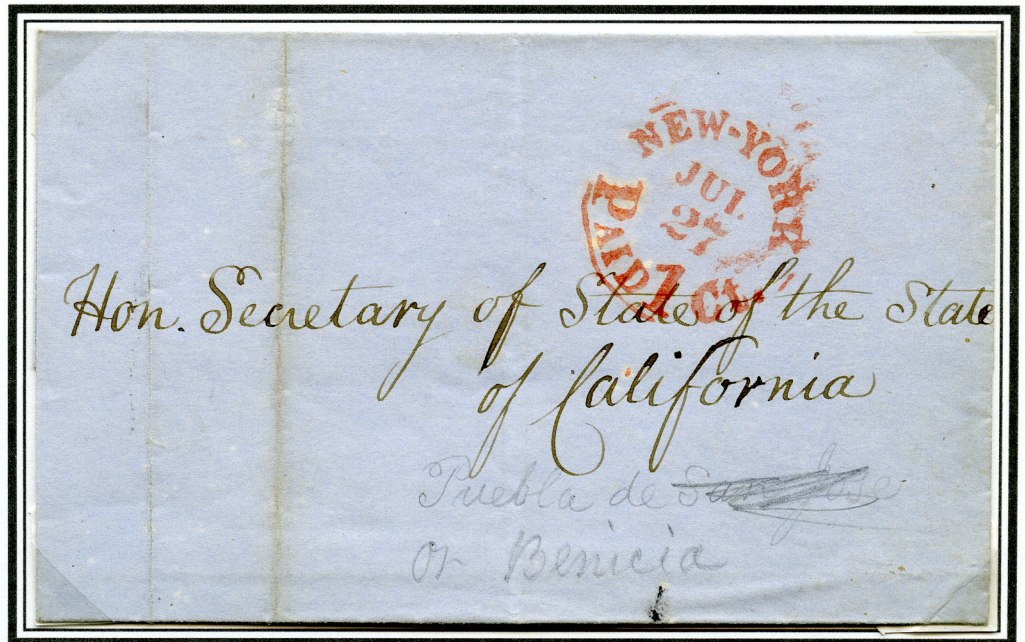
One Cent Up To 3 Ounces Any Distance

1 October 1852 - 30 June 1863

Effective October 1, 1852, The Rate For Circulars And Newspapers Was Reduced To 1¢ For Any Distance Within The United States

The only address on the circular was to the Secretary of State of California.

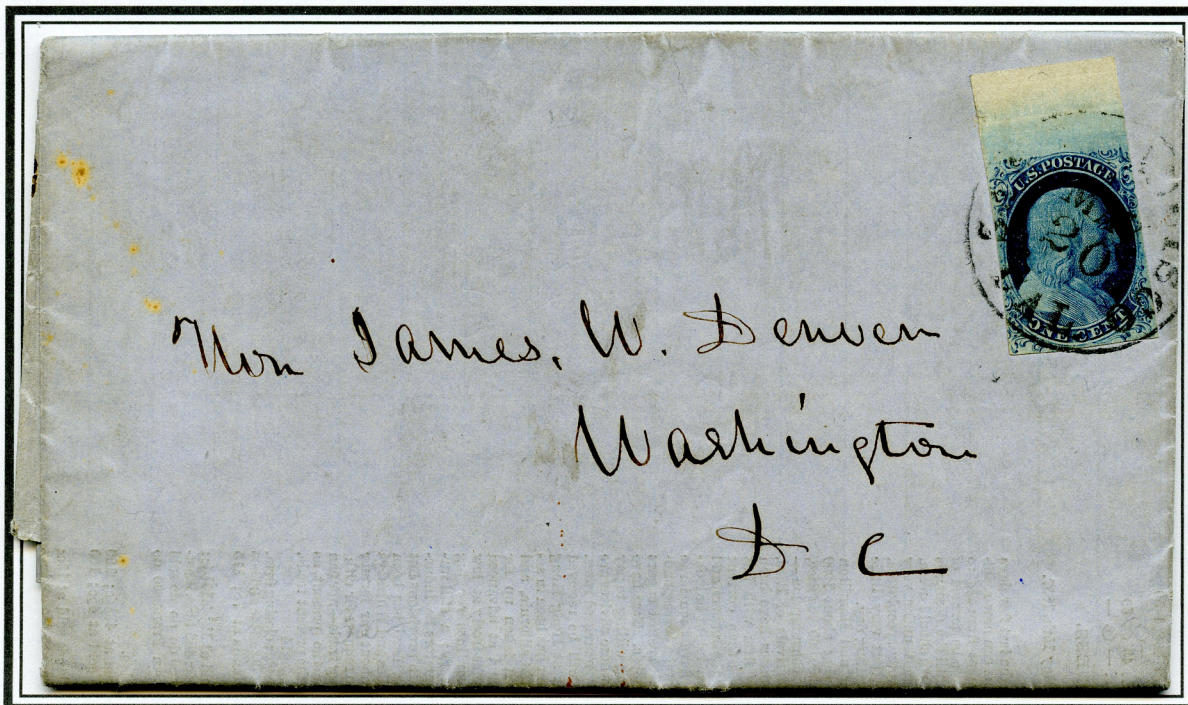
It appears a postal worker wrote the name of the state capital in pencil on the front of the circular. The capital had recently been moved to Benicia creating the initial confusion as to the proper location and pueblo name.



New York, NY to Benicia, CA

27 July 1853

San Francisco newsletter without a printed front.



San Francisco, CA to Washington, DC

20 May 1857

The contents of this circular is a printed San Francisco weekly newsletter dated May 20, 1857. Most of the known San Francisco newsletters have a printed address panel (see frame 4, page 6 of this exhibit).

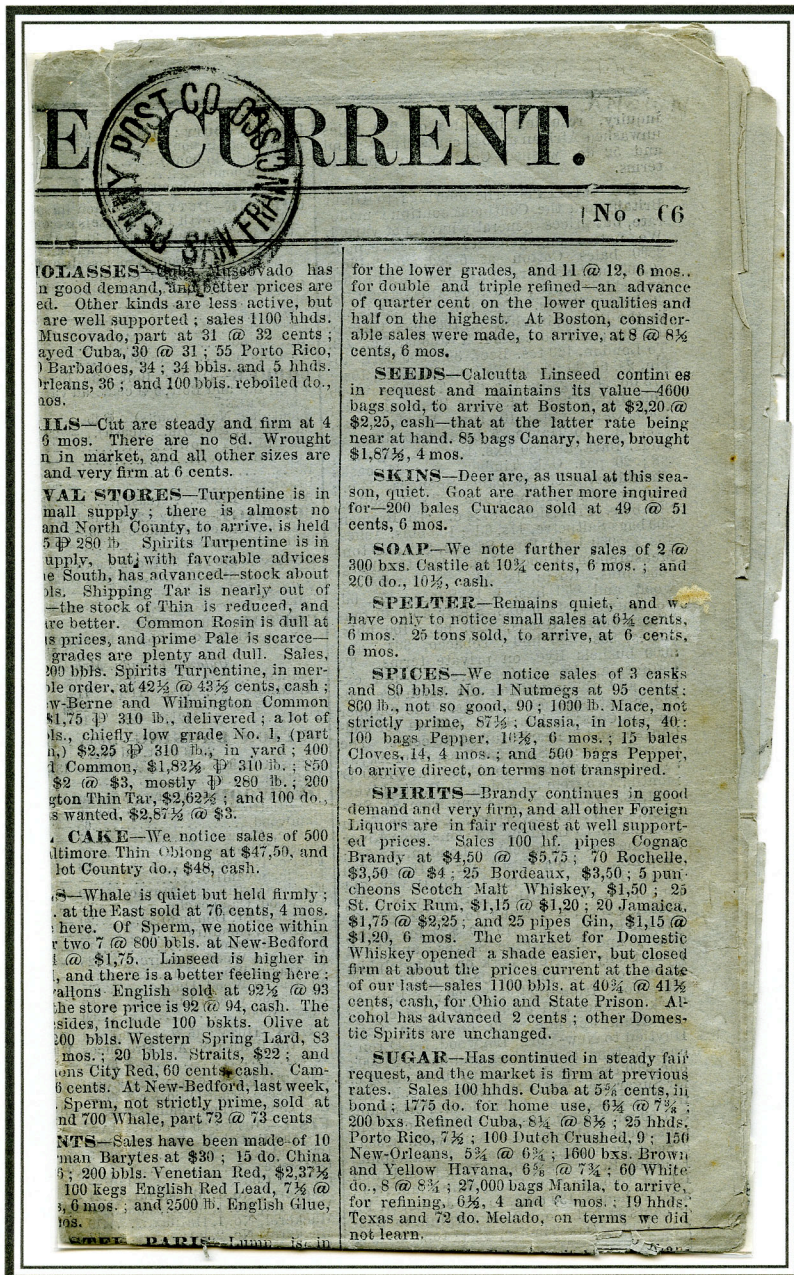
Fewer than three San Francisco Newsletters without printing on the address panel are recorded.

Newspaper

Local Post - San Francisco

8 August 1855

Penny Post Company - San Francisco, California



The Penny Post was the largest of the local posts to have operated in San Francisco. The post was founded by H. L. Goodwin in June of 1855 as a local post, but quickly grew with offices in several northern California cities.

This prices current sheet was published in New York, NY on August 18, 1855 at a cost of 6 1/4¢ each.

The sheets were most likely sent in bulk by ship to San Francisco where they were delivered by the Penny Post Co. of San Francisco to a number of companies on a subscription list. In this way, there was no requirement for an address to be placed on the piece.

San Francisco local delivery

18 August 1855

Less than five examples of this marking
have been recorded.

Printed Notices

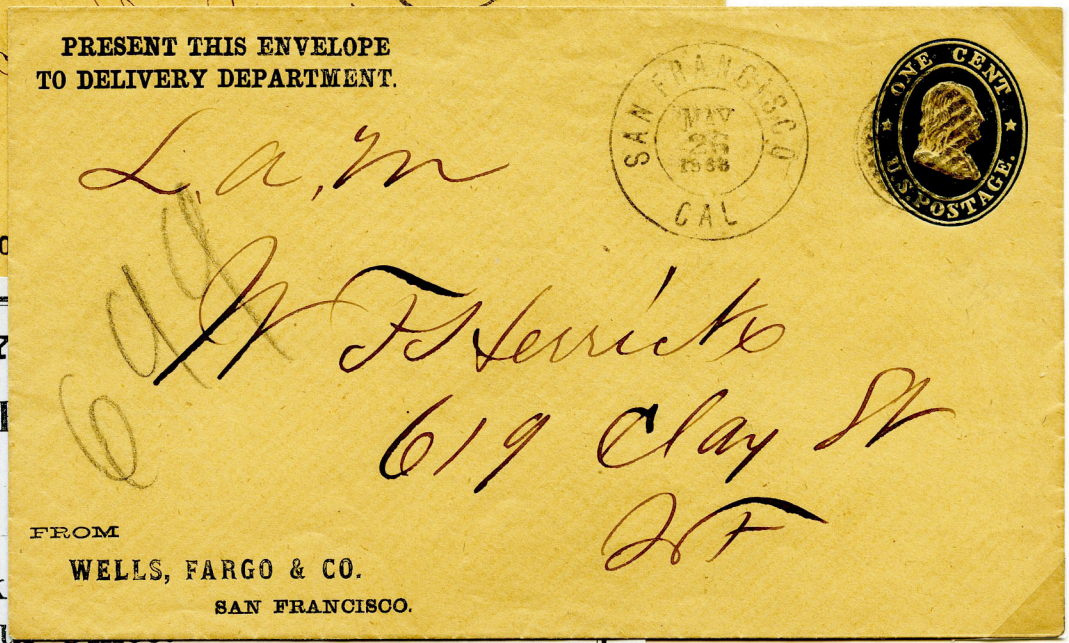
Wells, Fargo & Co. - San Francisco

1860 - 1865

Evolution of Wells, Fargo & Co. Printed Package Pickup Notices



Printed pickup notice sent inside unsealed drop mail envelope.



DELIVERY
 San F
 M
 Pack
 found in ou

Present this Notice and Envelope at the Delivery Department between the hours of 8 A. M. and 4 P. M.

Notice to left enclosed in envelope above

WELLS, FARGO & Co.



These three envelopes and enclosure show an evolution of Wells, Fargo & Co.'s pickup notices. The examples from 1860 and 1863 above, each contained a printed notice, an example is above.

By 1865 an enclosed notice was unnecessary as the entire message was printed on the envelope.

This is a very early example of a "post card like" message being sent through the mail.

Section Four - California And Hawaii

Newspapers Transported By Express Companies

California Express Companies Markings On Newspapers

Express Markings On Newspapers

The newspapers to the right illustrate several different types of printed publications and show the markings of the express companies that transported and delivered them.

List Of The Newspapers Presented

- 1. Sonora Herald - 25 November 1854 Wells Fargo Sonora and Marysville, CA Feather River Express
2. San Francisco Daily Herald - 7 March 1852 Gregory's Express
3. The Alta California - 5 January (1856) Pacific Express Company, San Francisco
4. Prices Current - 8 May 1855 Wells Fargo California Express
5. Prices Current - 3 November 1855 Freeman & Co. - San Francisco
6. Placer Time And Transcript - 8 February '55 Freeman & Co. Express

Collage of historical newspaper pages including 'Sonora Herald', 'California', and 'California Transcript'. It features various stamps like 'Wells Fargo', 'Gregory's Express', and 'Pacific Express', along with text from different sections such as 'Poetry', 'Nativity of California Officeholders', and 'Insurance Companies'.

Sonora Herald

VOL. V.—NO. 18.] SONORA, SATURDAY MORNING, NOVEMBER 25, 1854. [WHOLE NO. 226.

Bankers, Expresses, &c. ADAMS & CO.'S EXPRESS AND BANKING OFFICES, TUOLUMNE COUNTY, SONORA, Columbia, Jamestown, Montezuma, and Chinese Camp.

Poetry. The Welcome. BY THOMAS DAVIS. Come in the evening, or come in the morning, Kisses and welcome you'll find here before you.

OPIMUM EATING AND ITS EFFECTS.—The Louisiana Journal fears that the banishment of spirituous liquors, by means of stringent legal enactments, will give rise to the inordinate use of tobacco and opium.

Table with 2 columns: Names, Where Born. Lists names of California officeholders such as Burnett, McDougall, Bigler, Johnson, and their birthplaces.

Later from the South. ARRIVAL OF THE SENATOR. (BY GILBERT & HEDGE'S EXPRESS.) The steamer Senator, Captain Haley, arrived from San Diego and intermediate ports last evening.

Insurance Companies. IMPERIAL FIRE INSURANCE COMPANY. HEAD OFFICE, 1 OLD BRAD STREET, LONDON. ESTABLISHED 1803.

ST. NICHOLAS HOTEL, Sacramento Street, Between Montgomery and Sansome.

WHAT CHEER HOUSE, 119 and 121 Sacramento street, San Francisco. Board, per Day, Lodgings, per Night, Free Baths.

Medical Advertisements. DEVINE'S COMPOUND PITCH LOZENGE. THE WONDER OF THE WORLD. THE GREAT REMEDY AT LAST DISCOVERED!

AND TRANSCRIPT. NO. 1499. FEBRUARY 8, 1855.

Hotels and Restaurants. WHAT CHEER HOUSE, 119 and 121 Sacramento street, San Francisco.

Medical Advertisements. DEVINE'S COMPOUND PITCH LOZENGE.

Dr. Young's Medical Advertisements. QUICK CURES AND LOW PRICES. Old established Office, corner of Montgomery and California streets.