

## THE U.S. 10¢ POSTAGE STAMP OF 1869



IMPRINT BLOCK OF 15, PLATE 16L, THE LARGEST KNOWN MULTIPLE

THE OBJECTIVE OF THIS EXHIBIT IS TO SHOW ALL ASPECTS OF THE SUBJECT STAMP. THE EXHIBIT CONSISTS OF EIGHT FRAMES, EACH DESIGNED TO STAND ALONE. THE FIRST TWO FRAMES SHOW STAMPS AND THE LAST SIX FRAMES SHOW COVERS.

THE 10¢ 1869 STAMP WAS MOSTLY USED ON FOREIGN CORRESPONDENCE AND THE EXHIBIT REFLECTS THIS. THE ONE-YEAR LIFESPAN OF THE 1869 STAMPS BRIDGED A CRITICAL PERIOD IN THE MARCH TOWARD UNIVERSAL POSTAL UNION. THE YEARS 1869 AND 1870 SAW MULTIPLE RATE REDUCTIONS AND OTHER IMPORTANT CHANGES IN THE WAY INTERNATIONAL MAILED WERE RATED AND ROUTED. THE FOREIGN MAIL COVERS IN THE LAST FIVE FRAMES HIGHLIGHT THESE CHANGES.

THE ARRANGEMENT OF THE FRAMES IS AS FOLLOWS:

- FRAME 1: ESSAYS AND PROOFS
- FRAME 2: STAMPS AND CANCELS
- FRAME 3: DOMESTIC USES
- FRAME 4: CROSS-BORDER AND PAN-AMERICAN
- FRAME 5: FRENCH MAILED
- FRAME 6: GERMAN MAILED
- FRAME 7: BRITISH MAILED
- FRAME 8: U.S. TRANSPACIFIC MAILED

## ESSAYS AND PROOFS FOR U.S. 10¢ 1869

THIS FRAME SUGGESTS THE MANY ESSAYS AND PROOFS THAT SURVIVE FOR 10¢ 1869. LINCOLN ESSAYS ARE SHOWN IN ALL BRAZER-LISTED PAPER TYPES, INCLUDING 17 OF THE COLORFUL SAFETY-PAPER ESSAYS AND FOUR UNIQUE DOUBLE-DIE ENVELOPES. EAGLE AND SHIELD ESSAYS INCLUDE THE ONLY RECORDED PROOF OF THE FIRST STATE (SOURCE OF THE SCOTT LISTING) AND EXAMPLES OF THE SCARCE SECOND STATE. TRIAL COLOR, CARD, PLATE AND SUBSEQUENT PROOFS ARE ALL REPRESENTED.



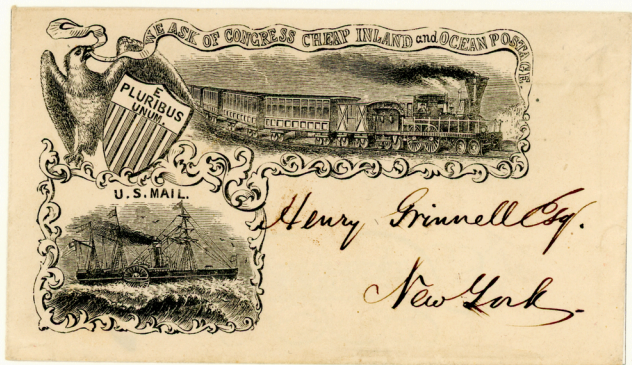
INDIA PROOF DIE SUNK ON CARD  
SIGNED BY ENGRAVER DOUGLAS S. RONALDSON

ICONOGRAPHY OF 10c 1869 STAMP DESIGN

THE U.S. 1869 STAMPS CELEBRATED THE SUCCESS OF POSTAL REFORM. FOUR OF THE 1869 STAMP DESIGNS SHOWED IMAGES THAT HAD BEEN WIDELY FEATURED ON POSTAL-REFORM PROPAGANDA ENVELOPES IN THE 1850s, FIRST IN ENGLAND, THEN IN THE U.S. IMAGES OF THE STEAM LOCOMOTIVE AND THE OCEAN STEAMSHIP WERE USED BY VALENTINE OF DUNDEE AS EARLY AS 1851. POSTAL PROPAGANDIST BARNABAS BATES MODIFIED VALENTINE'S DESIGN FOR USE IN THE U.S., KEEPING THE TWO STEAM VEHICLES AND ADDING THE PATRIOTIC IMAGE OF THE EAGLE AND SHIELD.



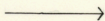
J. VALENTINE OCEAN PENNY POSTAGE PROPAGANDA ENVELOPE, STATE 3, POSTED 5 AUGUST 1851.



BARNABAS BATES POSTAL PROPAGANDA ENVELOPE, ADDRESSED TO ARCTIC IMPRESARIO HENRY GRINNELL.

EVOLUTION OF 10¢ 1869 STAMP  
NATIONAL BANKNOTE COMPANY

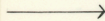
PREDECESSOR  
MAY 1866



DIE ESSAYS



ESSAYED JULY '68



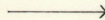
ISSUED STAMPS  
APRIL 1869



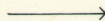
THE FIRST 10¢ 1869 DESIGN WAS A TRUNCATED VERSION OF THE 15¢ LINCOLN OF 1866. LINCOLN'S HEAD WAS ULTIMATELY USED ON THE 90¢ 1869. THE SECOND 10¢ 1869 DESIGN, SHOWING THE SIGNING OF THE DECLARATION, WAS USED ON THE 24¢ 1869. THE THIRD DESIGN, SHOWING THE EAGLE AND SHIELD, WAS USED FOR THE 10¢ 1869 AND (WITH FLAGS ADDED) FOR THE 30¢ 1869.



ESSAYED AUGUST '68



ESSAYED OCTOBER '68



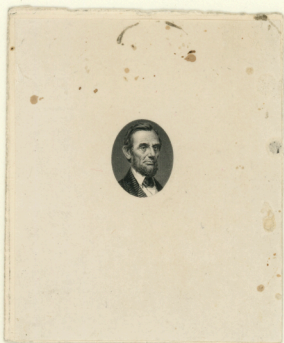
THE ISSUED STAMP





VIGNETTE ENGRAVED BY JOSEPH P. OURDAN  
BASED ON A PHOTO TAKEN 1-13-61 BY C.S. GERMAIN  
FRAME ENGRAVED BY DOUGLAS S. RONALDSON

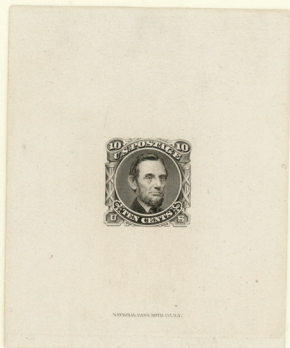
HEAD OF LINCOLN  
DIE ESSAYS



HEAD OF LINCOLN FROM  
PREDECESSOR 15¢ STAMP



PROOF PAPER



FRAMED, IVORY PAPER, IMPRINT OF  
"NATIONAL BANK NOTE CO., NEW YORK"



GREEN-VEINED MARBLED  
WHITE IVORY CARD



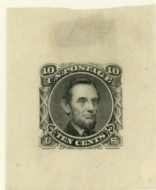
INDIA PAPER



GREENISH BOND



PINK BOND



CLEAR WHITE THIN BOND



CLOUDY CREAM BOND

HEAD OF LINCOLN: SAFETY PAPER ESSAYS



TYPE 8 UNDERPRINT IN SCARLET. 10¢ ESSAY IMAGES IMPRINTED IN ORANGE, RED AND BLUE.



UNDERPRINT TYPE 19,  
BLUE ON BLUE-GREEN



TYPE 5 UNDERPRINT IN BLACK. LEFT, BROWN ON HORIZONTAL LATHWORK. RIGHT, ORANGE RED ON VERTICAL.



UNDERPRINT 20, BROWN  
ON ORANGE, TWO NBNC  
IMPRINTS, DIE NUMBER



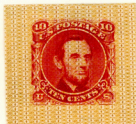
TYPE 16 UNDERPRINT  
IN SCARLET. IMAGE IM-  
PRINTED IN BLUE (AT LEFT) AND CARMINE (RIGHT).



TYPE 14 UNDERPRINT IN SCARLET. IMAGES IN  
CARMINE (AT LEFT) AND ORANGE RED (RIGHT).



UNDERPRINT TYPE 4,  
SCARLET, WITH STAMP  
IMPRINT IN BLUE



UNDERPRINT TYPE 3,  
BICOLORED (ORANGE  
AND RED) WITH STAMP  
IMPRINT IN CARMINE



TYPE 18, SCARLET,  
STAMP IMPRINT IN  
CARMINE



TYPE 13 UNDERPRINT IN BROWN, STAMP IM-  
PRINT IN CARMINE (AT LEFT) AND ORANGE RED.



T 24 UNDERPRINT (SCARLET), IMAGES BLUE AND CARMINE.

CREATED BY NATIONAL BANK NOTE CO. DURING SECURITY TESTS IN THE LATE 1860S. FOR THE 10¢ ESSAYS, 36 DIFFERENT EXAMPLES EXIST (17 UNDERPRINT TYPES IN SEVEN COLORS, STAMP IMAGES IN FOUR COLORS) WITH NO DUPLICATION RECORDED.

HEAD OF LINCOLN  
DIE ESSAYS ON GOVERNMENT ENTIRE ENVELOPES

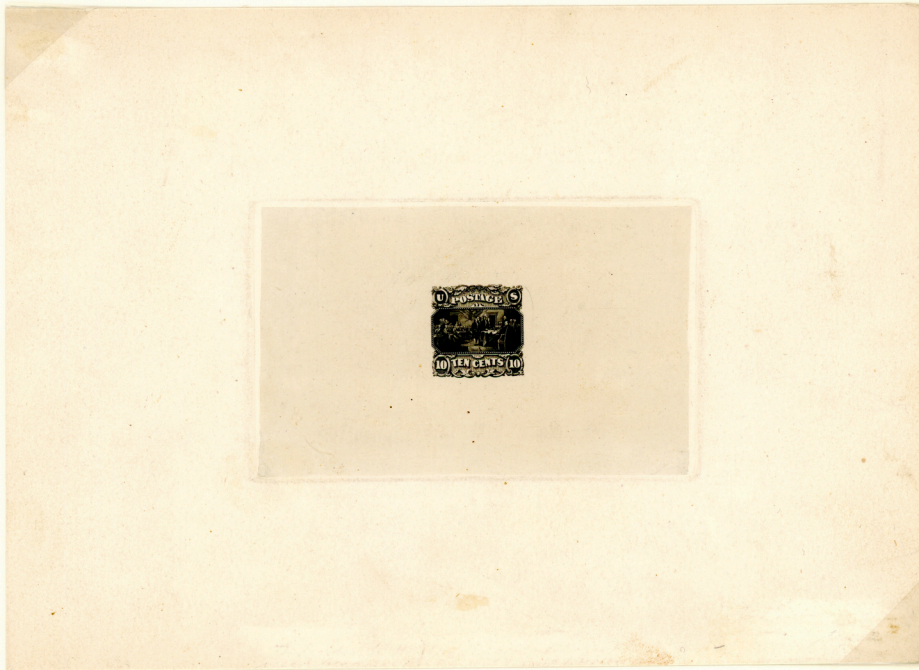


TOP: ON NESBITT ENVELOPES OF 1864-65. BOTTOM: ON REAY ENVELOPES OF 1870. ALL ARE UNIQUE.



DIE ESSAY

SIGNING OF THE DECLARATION OF INDEPENDENCE



VIGNETTE ENGRAVED BY JAMES SMILLIE  
FRAME ENGRAVED BY DOUGLAS S. RONALDSON

SIGNING OF THE DECLARATION OF INDEPENDENCE  
DIE ESSAYS, VARIOUS COLORS

BLUE



DIM ROSE



BUFF



BROWN



BLUE-GREEN



BLACK



RED-ORANGE

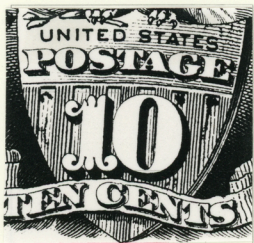
EAGLE AND SHIELD DESIGN  
 PROGRESSIVE DIE ESSAYS  
 SHOWING EVOLUTION OF ISSUED DESIGN

FIRST STATE:

CENTER OF ZERO NOT  
 FILLED IN.

NO SHADING  
 BEHIND "TEN CENTS"

THIN SHADING LINES  
 BEHIND "STATES"

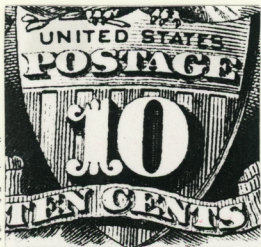


SECOND STATE:

CENTER OF ZERO FILLED IN.

SHADING BEHIND  
 "TEN CENTS"

THIN SHADING LINES  
 BEHIND "STATES"



ISSUED DESIGN:

CENTER OF ZERO FILLED IN.

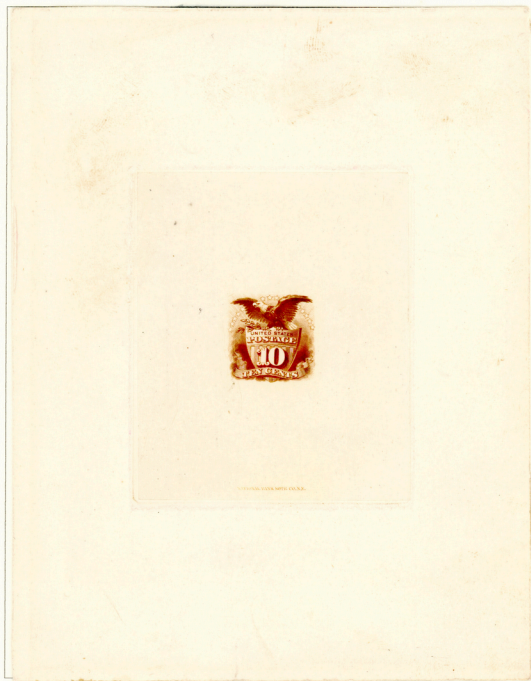
SHADING BEHIND  
 "TEN CENTS"

THICK SHADING LINES  
 BEHIND "STATES"



ATLANTA TRIAL  
 COLOR PROOF

EAGLE AND SHIELD DESIGN  
LARGE DIE TRIAL COLOR PROOF



CARD PROOFS AND THEIR ENVELOPES  
AMERICAN BANK NOTE COMPANY

DATE ORDERED	16 AUG 1877	11 AUG 1879	25 JULY 1882	22 OCT 1890	13 JAN 1893	9 FEB 1894
						
CARD THICKNESS	.012"	.007"-.010"	.012"-.015"	.012"-.013"	.010"-.013"	.012"-.014"
QUANTITY PROOFED	200	500	1,000	500	500	500

UNITED STATES  
POSTAGE STAMPS.  
1869.  
—  
PROOF SPECIMENS.

UNITED STATES  
POSTAGE STAMPS.  
1869.  
—  
PROOF SPECIMENS.

United States Postage Stamps,  
ISSUE  
1869

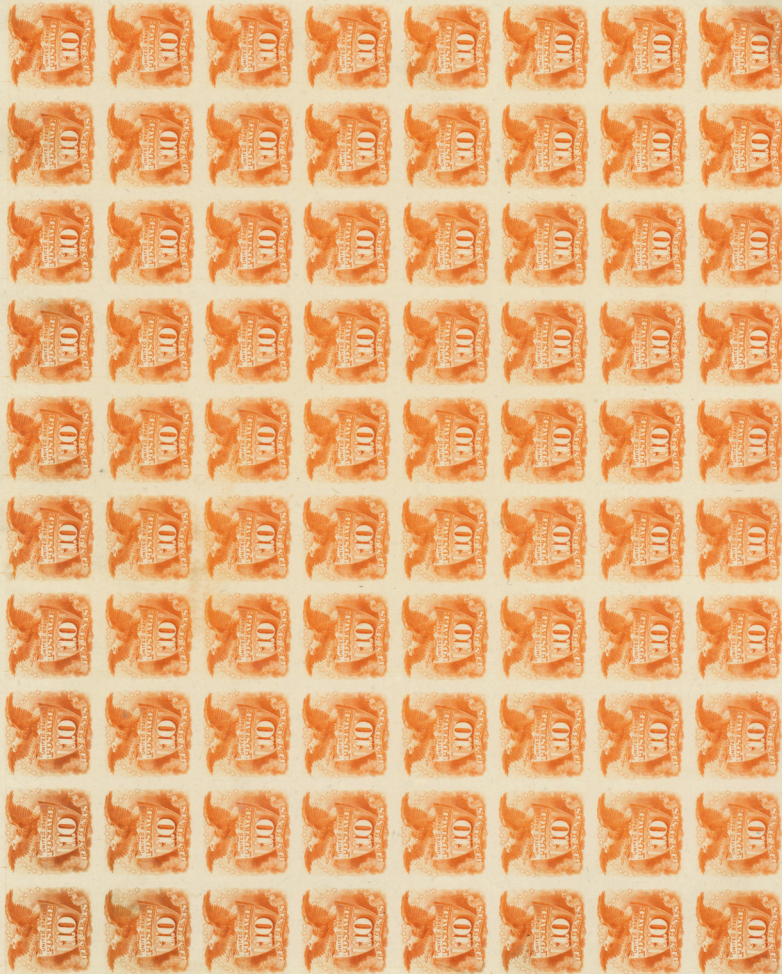
United States Postage Stamps,  
ISSUE  
1869.

United States Postage Stamps,  
ISSUE  
1869

BETWEEN 1877 AND 1894, AS STAMP COLLECTING GREW IN POPULARITY, CARD-BOARD PROOFS OF OBSOLETE STAMPS WERE CREATED AS GIVEAWAYS. SIX PRINTINGS WERE DISTRIBUTED, THICKNESS AND COLOR ARE SOMETIMES DISTINCTIVE, BUT THE PROOFS ARE BEST TYPED BY THE ENVELOPES IN WHICH THEY WERE SENT.

No. 15

INDIA POSTAGE PAID BY ADDRESSEE



INDIA PROOF PANE OF 150, PLATE 15L, MOUNTED ON CARD AS ISSUED...



No. 15

POSTAGE PAID IN FULL BY THE POST OFFICE

.. AND CUT INTO TWO PIECES EXPRESSLY TO FIT INTO THIS EXHIBIT



ATLANTA TRIAL COLOR PROOFS;  
300-450 COPIES CREATED IN 1881  
BY AMERICAN BANK NOTE CO.



PANAMA-PACIFIC  
SMALL DIE  
PROOFS,  
BUREAU OF  
ENGRAVING  
AND PRINTING,  
SIX  
IMPRESSIONS  
CREATED,  
18 NOV 1914.