

10c 1869 TO AND THROUGH GERMANY

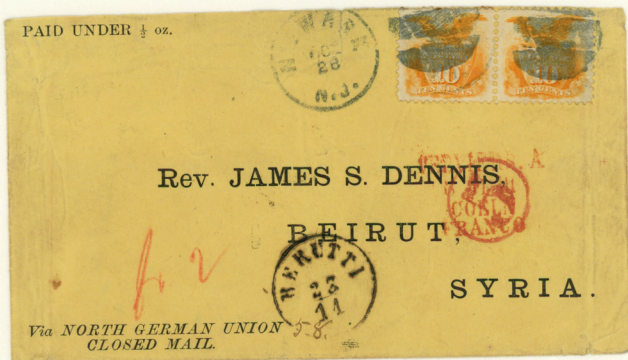
ILLUSTRATING RATES AND ROUTES OF PRE-UPU ERA. "DIRECT" COVERS STAYED ON N.Y. STEAMER TO GERMAN PORT. "VIA ENGLAND" COVERS LEFT STEAMER AT FIRST BRITISH PORT, THENCE OVERLAND TO GERMANY WITH BRITISH MAELS.

TOP ROW: DIRECT COVERS TO GERMANY, SUCCESSIVE RATES OF 10c, 7c AND 6c.
SECOND ROW: COVERS VIA ENGLAND AT 15c AND 10c RATES; REGISTERED COVERS.
BOTTOM ROWS: DESTINATIONS BEYOND GERMANY VIA GERMAN MAIL SERVICE.

ALL COVERS ARE SELECTED TO CONTRAST ROUTES AND TO SHOW THE EVOLUTION OF THE RATES, WITH SPECIAL EMPHASIS ON FRANKING VARIETY AND DESTINATION.

RATE:
20c PER 1/2 OZ
EFFECTIVE:
1 JAN 1869-
30 JUNE 1870

CUNARD JAVA
DEPART NYC
27 OCT 1869



NEWARK/BEIRUT, 26 OCTOBER 1869. VIA CLOSED MAIL THROUGH ENGLAND TO GERMANY AND VIA GERMAN MAELS ONWARD TO BEIRUT, SYRIA, IN THE OTTOMAN EMPIRE. NEW YORK CREDIT OF 5c FOR CARRIAGE BEYOND NGU, RESTATED AT VERVIERS-COLOGNE AS "fr. 2".

TO GERMANY
 DIRECT TRANSIT
 RATE: 10¢ PER 1/2 OZ — EFFECTIVE 1 JAN 1868—30 JUNE 1870



BALTIMORE, MD/WEIMAR,
 1 APRIL 1870. NGL RHEIN
 DEPART NYC 2 APRIL 1870.
 BALTIMORE "PAID ALL".



PEORIA, ILL./LEIPZIG,
 25 MAY 1870, ON 10¢
 NESBITT ENVELOPE. NGL
 MAIN DEPART NYC 28 MAY
 1870. DOUBLE RATE.



BOSTON, MASS /DRESDEN,
 4 APRIL 1870. HAPAG
 HAMMONIA|| DEPART NYC
 5 APRIL 1870. TRIPLE RATE.

TO GERMANY
DIRECT TRANSIT
SUBSEQUENT 7c AND 6c RATES

RATE:
7c PER 1/2 OZ
EFFECTIVE:
1 JULY 1870-
30 SEPT 1871



VIA HAPAG
HOLSATA
DEPART NYC
12 JULY 1870
ARRIVE PLYMOUTH
22 JULY 1870

FLORENCE, S.C./PRUSSIA, 8 JULY 1870. 10c OVERPAYS NEW 7c RATE. DIRECT
MAILS OFF AT ENGLAND DUE TO OUTBREAK OF FRANCO-PRUSSIAN WAR.

RATE:
6c PER 1/2 OZ
EFFECTIVE:
1 OCT 1871-
1 JULY 1875



VIA HAPAG
CIMBRIA
DEPART NYC
28 FEB 1873

NYC/BERLIN, 28 FEB 1873, WITH 2c BANK NOTE STAMP PAYING DOUBLE 6c RATE

TO GERMANY
 DIRECT TRANSIT
 INSUFFICIENTLY PREPAID: SHOWING GERMAN COLLECTION



FROM 1 JAN 1868
 THROUGH 30 JUNE
 1870, UNDERPAID COV-
 ERS TO GERMANY
 WERE CHARGED THE
 DEFICIENT POSTAGE
 PLUS A 5c FINE.

IN THE COMPUTATION,
 5c (US) IS EQUIVALENT
 TO 2 (NGU) SILBER-
 GROSCHEN (SGR).

BOSTON/DRESDEN, FEBRUARY 1870, 2 x 10c DIRECT RATE. 7c DEFICIENT POSTAGE + 5c
 FINE = 12c COLLECTION = 4.5 SILBERGROSCHEN COLLECTED FROM RECIPIENT.

SCARCE
 BOSTON
 CIRCULAR
 "INSUFFICIENTLY
 PAID"



BOSTON/DRESDEN, 2 MAY 1870, 2 x 10c DIRECT RATE. 10c DEFICIENT POSTAGE + 5c FINE =
 15c COLLECTION = 6 SILBERGROSCHEN COLLECTED FROM RECIPIENT.

TO GERMANY
SUCCESSIVE 10c RATES
CAMPAIGN ENVELOPES FROM ELECTION OF 1868

DIRECT
RATE:
10c PER 1/2 OZ
EFFECTIVE:
1 JAN 1868--
30 JUN 1870

NGL
DEUTSCHLAND
DEPART NYC
8 APR 1869



BLAIR-SEYMOUR
CAMPAIGN
ENVELOPE

NEW YORK CITY/BERLIN, 8 APRIL 1869. TWO EARLIER 10c 1869 COVERS ARE RECORDED.

VIA ENGLAND

RATE:
10c PER 1/2 OZ
EFFECTIVE:
1 JULY 1870--
30 SEPT 1871

HAFAG
THURINGIA
DEPART NYC
14 FEB 1871



GRANT-COLFAX
CAMPAIGN
ENVELOPE

BARABOO, WISCONSIN/STRAUSLUND, GERMANY, 10 FEBRUARY 1871. ONLY THREE CAMPAIGN COVERS ARE RECORDED BEARING THE 10c 1869 STAMP.

TO GERMANY VIA ENGLAND
 RATE: 15c PER 1/2 OZ.
 EFFECTIVE: 1 JAN 1868--30 JUN 1870

NEW YORK/STUTTART, 16 MAR 1870: 2c, 3c AND 10c 1869

GLUCON
 COLORADO
 DEPART NYC
 16 MAR 1870



HAPAG
 OMBREA
 DEPART NYC
 22 MAR 1870



HAPAG
 ALLEMANNIA
 DEPART NYC
 24 MAY 1870

VICKSBURG/DARMSTADT,
 17 MARCH 1870: BLACKJACK
 WITH 3c AND 10c 1869



SAN FRANCISCO/OLDENBURG, 15 MAY 1870: 10c 1869 WITH 5c "F" GRILL

TO GERMANY
 VIA ENGLAND
 RATE: 10c PER 1/2 OZ -- EFFECTIVE 1 JULY 1870--30 SEPT 1871
 COLORFUL DOUBLE RATES



INMAN
 CITY OF
 WASHINGTON
 DEPART NYC
 23 JULY 1870

CHICAGO/DETMOLD, 20 JULY 1870, WITH 6c 1869 AND 1c "E" GRILL ON 3c NESBITT ENVELOPE



CUNARD
 CALABRIA
 DEPART NYC
 29 JULY 1871

SANDY HOOK, CONNECTICUT/HAMBURG, 23 JULY 1871, WITH 5c JEFFERSON (NO GRILL) AND 2c BANK NOTE (NO GRILL) ON 3c REAY ENTIRE ENVELOPE.

TO GERMANY
REGISTERED MAIL

CONTRASTING RATES AND ROUTES

DIRECT TRANSIT

2x10c LETTER RATE
8c REGISTRY FEE



HAFAG
HOLGATA
DEPART NYC
8 MARCH 1870

PHILADELPHIA/BERLIN, 6 MARCH 1870. WITH 3C AND 15C TYPE II

TRANSIT VIA ENGLAND

15c LETTER RATE
8c REGISTRY FEE



HAFAG
SILFSA
DEPART NYC
30 NOV 1869

SAN FRANCISCO/CASSEL, 16 NOVEMBER 1869

TO AUSTRIA
DIRECT AND VIA ENGLAND



DIRECT RATE:
10¢ PER 1/2 OZ
EFFECTIVE
1 JAN 1868-
30 JUN 1870

Dr. Georg von G...
Josef Schreier
Cooperator.



H. BINDER. J. KEPPLER.
"Die Zeitschrift."
German ILLUSTRATED Weekly.
ST. LOUIS, MO.
P. M. will please advise, if not called
for within ten days.

Franz Gaul
Caricaturist
N. Niedm. Hofplatz.
Wien
Austria.

Kitzbühel.
Tirol.
Europa.

ABOVE: ADRIAN, MICH/
KITZBUHEL, AUSTRIA,
3 DEC 1869. 10¢ RATE.

ST. LOUIS, MO./WIEN, AUSTRIA, MAY 1870. TWO TIMES 10¢ DIRECT RATE.



VIA ENGLAND:
15¢ PER 1/2 OZ
EFFECTIVE
1 JAN 1868-
30 JUNE 1870

NEW YORK CITY/TRIESTE, AUSTRIA, 2 NOV 1869. SINGLE 15¢ RATE VIA ENGLAND.

TO DENMARK
 VIA NORTH GERMAN UNION MAIL
 RATES EFFECTIVE 1 JANUARY 1868—30 JUNE 1870

CONTRASTING RATES AND ROUTES

CLOSED MAIL VIA ENGLAND, 18¢ RATE

NYC 2 1/2¢
 CREDIT TO NGU
 FOR CARRIAGE
 BEYOND
 GERMANY
 WFCO 1; NGU
 RESTATEMENT
 OF NY CREDIT



VERVIERS, B.
 10 5 3
 COIN
 FRANCO
 (RPO MARKING)

ON REVERSE:
 NEW YORK
 PAID ALL
 BR TRANSIT
 APR. 27

VIA GUION
 COLORADO
 DEPART NYC APR 27
 ARRIVE
 QUEENSTOWN MAY 4

HARTFORD/COPENHAGEN, 26 APRIL 1870. THIS IS THE ONLY RECORDED 10¢ 1869 COVER SHOWING THE 18¢ "CLOSED MAIL VIA ENGLAND" RATE.

DIRECT TRANSIT VIA HAMBURG, 13¢ RATE

VIA HAPAG
 ALLEMANIA
 DEPART NYC
 12 APRIL 1870



ENTERED
 GERMAN MAILS
 AT HAMBURG
 26 APRIL 1870

HARTFORD/COPENHAGEN, 11 APRIL 1870. BECAUSE OF POOR DATA PRESENTATION IN U.S. MAIL RATE CHARTS, FEW COVERS TO DENMARK WERE PROPERLY PREPAID. THIS IS ONE OF THREE RECORDED 10¢ 1869 COVERS PROPERLY FRANKED FOR THE 13¢ RATE.

TO DENMARK
 INSUFFICIENTLY PREPAID VIA NORTH GERMAN UNION MAIL
 RATES EFFECTIVE 1 JANUARY 1868—30 JUNE 1870

CONTRASTING RATES AND ROUTES

CLOSED MAIL VIA ENGLAND, 21¢ RATE (FOR UNPAID MAIL)

ON REVERSE:
 BLUE
 VERVIER
 -COLOGNE
 RPO MARKING
 1115



NEW YORK "X"
 MAR 2
 VIA CUNARD
 CALABRIA
 DEPART NYC
 2 MAR 1870

HARTFORD/COPENHAGEN, 28 FEB 1870. UNDERFRANKED MAIL WAS TREATED AS FULLY UNPAID. 7 SILBERGROSCHEN DEBIT IN NGU = 38 SKILLING COLLECTION IN DENMARK = 21¢ U.S., THE UNPAID TREATY RATE.

DIRECT TRANSIT VIA HAMBURG, 16¢ RATE (FOR UNPAID MAIL)

ON REVERSE:
 BREMEN
 ENTRY MARK
 25-3-70



NEW YORK
 DIRECT
 MAR 2
 VIA NGL
 WESER II
 DEPART NYC
 12 MAR 1870

HARTFORD/COPENHAGEN, 12 MARCH 1870. 5 SGR NGU DEBIT = 29 SKILLING COLLECTION IN DENMARK = 16¢ U.S., THE UNPAID TREATY RATE.

TO NORWAY
 VIA NORTH GERMAN UNION MAIL
 DIRECT RATE; 15c PER 1/2 OZ -- EFFECTIVE 27 JULY 1869--30 JUNE 1870

CHICAGO EXCHANGE OFFICE



CHICAGO
 CREDIT 5

HAMBURG "2 WF"
 (-5c) FOR TRANSIT
 BEYOND GERMANY

VIA HAPAG
 GIESIA
 DEPART NYC
 30 NOV 1869
 ARRIVE HAMBURG
 12 DEC 1869

MOSCOW, WISC/CHRISTIANA, 24 NOVEMBER, 1869, WITH 5c "F" GRILL.



CHICAGO
 CREDIT 5

CARBONDALE, ILL/THYM, NORWAY, MAY, 1870. ACCEPTED AS SINGLE-RATE LETTER AT CHICAGO, RERATED AS UNPAID DOUBLE RATE. 24 SILBERGROSCHEN (=60c) DEBITED TO NORWAY AND COLLECTED ON RECEIPT. THREE 10c 1869 COVERS ARE RECORDED TO NORWAY.

TO SWEDEN
DIRECT TRANSIT TO HAMBURG

SUCCESSIVE DIRECT RATES

VIA N.G.U. MAIL
RATE: 14¢ PER 1/2 OZ
EFFECTIVE:
9 APRIL 1869--
30 JUNE 1870



ON REVERSE:
NEW YORK
PAID ALL
DIRECT
MAY 31

4¢ CREDIT (NY)
= 1 1/2 5¢R.
(HAMBURG)

HAPAG
HOLSATIA
DEPART NYC
31 MAY 1870

CINCINNATI/GOTHENBURG, 27 MAY 1870, WITH PAIR OF 2¢ NATIONAL BANK NOTE STAMPS

VIA SWEDISH-
NORWEGIAN
CLOSED MAIL
RATE: 9¢ PER 1/2 OZ
EFFECTIVE:
JULY 1, 1873--
30 JUNE 1875



SCARCE
EXCHANGE
OFFICE
MARKING:
NEW YORK
PAID ALL
GER. TRANSIT

VIA HAPAG
SILEGIA
DEPART NYC
3 DEC 1874

SUMMIT HILL, PA/HOLMEDUL, SWEDEN, 2 DEC 1874, 1¢ OVERPAYMENT

TO POLAND, HUNGARY AND CZECHOSLOVAKIA
 VIA GERMAN-AUSTRIAN POSTAL UNION
 CONTRASTING 10c RATES

VIA ENGLAND RATE
 10c PER 1/2 OZ
 EFFECTIVE:
 1 JULY 1870--
 30 SEPT 1871

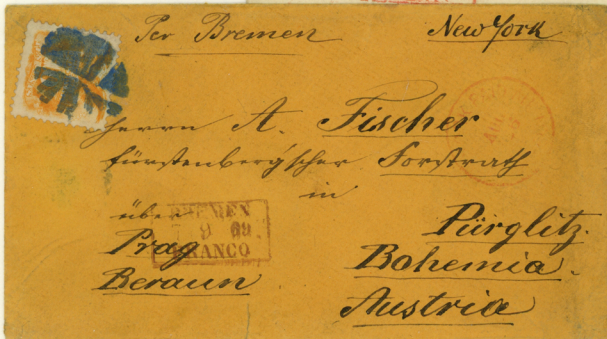


DANVILLE, PA/BRIEG (BREZEG), "FRUSSIAN SILESIA" (NOW POLAND), 22 AUGUST 18770



ABOVE: NYC/PEST, UNGARN (HUNGARY), 8 JANUARY 1870

DIRECT RATE
 10c PER 1/2 OZ
 EFFECTIVE:
 1 JAN 1868--
 30 JUNE 1870



LEFT: NYC/PURGLITZ, BOHEMIA (NOW CZECHOSLOVAKIA), 26 AUGUST, 1869

TO ROME
 VIA NORTH GERMAN UNION MAIL
 RATES EFFECTIVE 1 JANUARY 1868--30 JUNE 1870

CONTRASTING RATES AND ROUTES

CLOSED MAIL VIA ENGLAND, 19c RATE



NEW YORK CREDIT 4
 = 1 1/2 SILBERGROSCHEN
 (COLOGNE)
 FOR CARRIAGE
 BEYOND NGU

BOSTON/ROME, 16 FEBRUARY 1870

DIRECT TRANSIT VIA BREMEN, 14c RATE



BOSTON CREDIT 4
 = 1 1/2 SILBERGROSCHEN
 (BREMEN)
 FOR CARRIAGE
 BEYOND NGU

BOSTON/ROME, 26 FEBRUARY 1870

TO SWEDEN
VIA NORTH GERMAN UNION MAIL

SUCCESSIVE RATES VIA CLOSED MAIL VIA ENGLAND

RATE:
14c PER 1/2 OZ

EFFECTIVE:
1 JULY 1870-
30 SEPT 1871

4c CREDIT (N.Y.)
= 1 1/2 SGR.
(COLOGNE)



ON REVERSE:
"NEW YORK
PAID ALL
BR. TRANSIT"

INMAN
CITY OF BRUSSELS
DEPART NYC
16 JULY 1870

HARTFORD/GOTHENBURG, 15 JULY 1870, WITH 2c 1869 AND TWO 3c NATIONALS. OVERPAID.

RATE:
11c PER 1/2 OZ

EFFECTIVE:
1 OCT 71-
AUGUST 74



INMAN
CITY OF NEW YORK
DEPART NYC
18 NOV 1871

CHATSWORTH, ILL/HELSELHOLM, 14 NOV. 1871, WITH 1c NATIONAL BANK NOTE STAMP.