

CONCLUSION: U.S. TRANSPACIFIC MAILES

THIS FRAME SHOWS USES OF THE 10¢ 1869 STAMP IN THE UNITED STATES TRANSPACIFIC MAIL SYSTEM. WITH THE COMPLETION OF THE CONTINENTAL RAILROAD IN MAY 1869, THE EAST COAST WAS CONNECTED TO REGULARLY SCHEDULED STEAMERS CROSSING THE PACIFIC FROM SAN FRANCISCO.

TOP ROW: TO HAWAII AND DESTINATIONS BEYOND BY THE SHORT-LIVED HALL AND WEBB LINES; VIA BRITISH MAILES TO DESTINATIONS BEYOND HONG KONG

MIDDLE ROWS: TO/FROM CHINA AND JAPAN VIA THE MONTHLY PADDLE-WHEEL STEAMERS OF THE PACIFIC MAIL STEAM SHIP COMPANY. INCLUDED ARE COMBINATION-RATE COVERS TO ENGLAND, THE ONLY 10¢ INTER-CONSULAR COVER, A COVER FROM HIOGO, THE ONLY COVER KNOWN FROM THE FIRST KOREAN WAR, AND THE EARLIEST AND LATEST 10¢ 1869 USES FROM CHINA.

BOTTOM ROW: THE EXHIBIT CONCLUDES WITH THREE PAGES OF AFTER-THOUGHTS—TWO PAGES OF THE 1875 REISSUE (SINGLES, BLOCK AND COVER) AND A 20TH CENTURY USPS REINCARNATION OF THE 10¢ 1869 STAMP.



F.M.S.S.
GREAT REPUBLIC
DEPART S.F.
3 JULY 1869

TREATY RATE:
10¢ PER 1/2 OZ.
EFFECTIVE:
JULY 1867--
30 JUNE 1875

NEW YORK/HONG KONG, 8 JUNE 1869. EARLIEST TRANSPACIFIC 10¢ 1869 COVER, PROUDLY ROUTED "BY OVERLAND MAIL AND P.M.S.S. CO" AND CARRIED ON THE FIRST PACIFIC MAIL CROSSING AFTER THE COMPLETION OF THE TRANSCONTINENTAL RAILROAD.

TO AND FROM HAWAII
TRANS-PACIFIC RATE: 10c PER 1/2 OZ
EFFECTIVE: JUNE 1867--30 JUNE 1870



VIA SHIP
GOVERNOR MORTON
DEPART
SAN FRANCISCO
20 MAY 1870

S.F./HILO, MAY 19, 1870. THREE 10c 1869 COVERS RECORDED TO HAWAII.



VIA STEAMER
IDAHQ OF
CALIFORNIA,
OREGON &
MEXICO
STEAMSHIP CO.

DEPART
HONOLULU
8 FEB 1870
ARRIVE S.F.
23 FEB 1870

HONOLULU/MEDFORD, MASS., FEB. 8, 1870. 10c 1869 WITH 5c HAWAII. BOTH STAMPS
REQUIRED FOR FULL PREPAYMENT OF POSTAGE. ONE OF SIX COVERS RECORDED SHOWING
10c 1869 IN MIXED-FRANKING USAGE WITH 5c HAWAII KAMEHAMEHA.

TO NEW ZEALAND AND TASMANIA
 SCARCE STEAMER LINES TO DESTINATIONS DOWN UNDER
 VIA HALL LINE AND WEBB LINE BEYOND HAWAII

TO NEW ZEALAND



AT LEFT, SINGLE RATE: MONUMENT, MASS./MONGANUI, NEW ZEALAND, 4 OCTOBER 1870. VIA MOSES TAYLOR FROM S.F. TO HONOLULU AND HALL LINE CITY OF MELBOURNE FROM HONOLULU TO AUCKLAND. BACKSTAMPED AUCKLAND DE 17 1870, MONGANUI JAN 19 1871.



AT RIGHT, DOUBLE RATE: NEW BEDFORD, MASS./BAY OF ISLANDS, 22 JUNE 1870. VIA AJAX FROM S.F. TO HONOLULU AND CITY OF MELBOURNE HONO TO AUCKLAND. BACKSTAMPED AUCKLAND AUG 18 1870.

THE HALL LINE MADE SIX TRANSPACIFIC CROSSINGS. VERY FEW COVERS SURVIVE. FIVE 10¢ 1869 COVERS TO NEW ZEALAND VIA HALL LINE ARE RECORDED.

TO TASMANIA

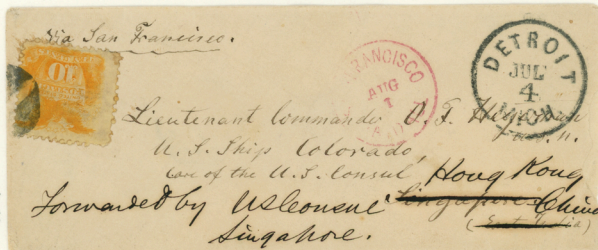


MONUMENT, MASS./HOBART-TOWN, VAN DIEMAN'S LAND," 8 AUGUST 1871. VIA MOSES TAYLOR FROM SAN FRANCISCO TO HONOLULU AND WEBB LINE STEAMER NEBRASKA FROM HONOLULU TO MELBOURNE. BACKSTAMPED "HOBARTTOWN TASMANIA SE 25 71" AND "SHIP LETTER INWARDS FREE."

THE WEBB LINE WAS THE SHORT-LIVED SUCCESSOR TO THE HALL LINE ON THE HONOLULU-TO-MELBOURNE RUN. VERY FEW WEBB LINE COVERS ARE KNOWN. TWO 10¢ 1869 COVERS ARE RECORDED TO TASMANIA.

VIA BRITISH MAILES BEYOND HONG KONG
 TREATY RATE: 10¢ PER 1/2 OUNCE
 EFFECTIVE: 1 NOVEMBER 1868--30 JUNE 1875

TO SINGAPORE

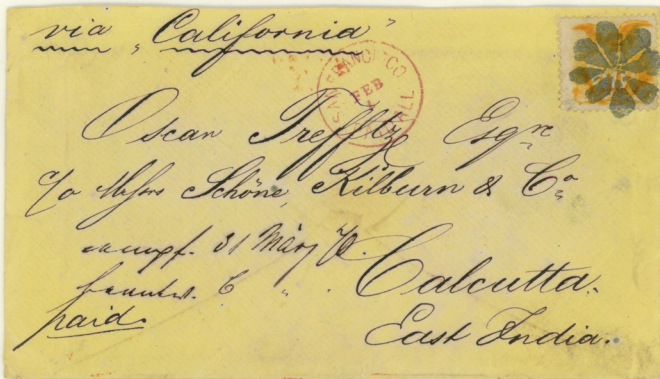


"FORWARDED BY
 U.S. CONSUL
 SINGAPORE"

PM 5.5.
 GREAT REPUBLIC
 DEPART 9.F.
 1 AUGUST 1870

DETROIT/SINGAPORE, 4 JULY 1870. VIA PM55 STEAMER FROM SAN FRANCISCO TO HONG KONG. CARRIED FROM HONG KONG TO SINGAPORE AND THEN BACK TO HONG KONG VIA BRITISH MAIL STEAMSHIPS. BRITISH BACKSTAMP "SINGAPORE 9P 22 70." THIS IS THE ONLY RECORDED 10¢ 1869 COVER TO SINGAPORE VIA THE TRANSPACIFIC ROUTE AT THE 10¢ RATE.

TO INDIA



"SAN
 FRANCISCO
 PAID ALL
 FEB 1"
 PM 5.5.
 GREAT REPUBLIC
 DEPART 9.F.
 1 FEB 1870

NYFM
 8-SEGMENT
 PETAL
 KILLER

ON REVERSE:
 "STEAMER
 LETTER
 G.P.O.
 CALCUTTA
 MA 30 70"

NEW YORK/CALCUTTA, 22 JANUARY 1870. CANCELLED BUT NOT DATED AT THE NEW YORK FOREIGN MAIL OFFICE. EXCHANGED AT SAN FRANCISCO. CARRIED FROM HONG KONG TO CALCUTTA VIA BRITISH MAIL STEAMERS. ONE OF TWO 10¢ 1869 COVERS RECORDED TO INDIA AT THE 10¢ TRANSPACIFIC RATE.

FROM SHANGHAI
U.S. CONSULAR POSTAL AGENCY
RATE: 10c PER 1/2 OZ -- EFFECTIVE: JUNE 1867--30 JUNE 1875

SINGLE RATE



VIA P.M.S.S.
CHINA
ARRIVE S.F.
18 NOV 1870

"P.O.D.
U.S. CON. GENL.
SHANGHAI"

SHANGHAI, CHINA/CANTON, N.Y., 13 OCTOBER 1870

DOUBLE RATE



VIA P.M.S.S.
AMERICA
ARRIVE S.F.
15 JULY 1871

BACKSTAMP:
"SAN
FRANCISCO
JULY 16"

SHANGHAI, CHINA/ELK CREEK, WISC., 13 JUNE 1871. MOURNING COVER.

FROM SHANGHAI
U.S. CONSULAR POSTAL AGENCY
6 TIMES 10c PER 1/2 OZ. RATE

STEAMER GREAT REPUBLIC
PACIFIC MAIL STEAM SHIP CO.
DEPART YOKOHAMA 24 JAN 1871
ARRIVE S.F. FEB 16, 1871

W. Mail
via San Francisco.

Care of

Philip D. Ware
Cashier
F. S. Ware & Co.
Trade Bank
Boston
Massachusetts

SHANGHAI/BOSTON, 14 JANUARY 1871. 10c + 2c 1869
WITH TWO 24c 1861 STAMPS. ONE OF TWO COVERS
RECORDED SHOWING THE 24c 1861 USED IN CHINA.

FROM SHANGHAI
U.S. CONSULAR POSTAL AGENCY
7 TIMES 10c PER 1/2 OZ. RATE

TRANS-PACIFIC CARRIAGE VIA STEAMER
JAPAN OF PACIFIC MAIL STEAM SHIP
CO. DEPART YOKOHAMA 21 FEB
1871. ARRIVE S.F. 15 MARCH.



SHANGHAI/BOSTON, 12 FEBRUARY 1871. 10c 1869
PLUS PAIR OF 30c 1869. FEWER THAN 60 30c 1869
COVERS ARE RECORDED, ONLY SEVEN SHOWING PAIRS.
ONE OF FIVE COVERS RECORDED WITH 10c + 30c 1869.

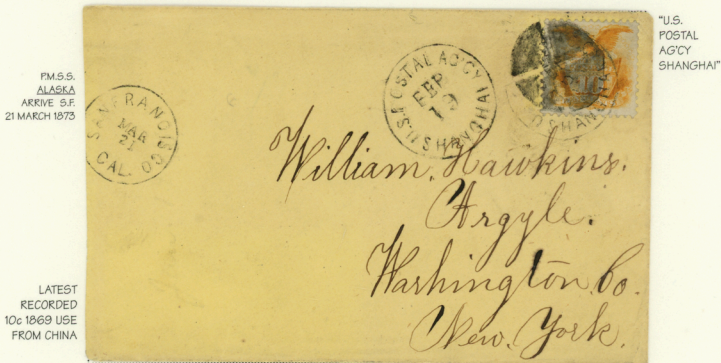
FROM SHANGHAI
 CONSULAR AND AGENCY MARKINGS
 EARLIEST AND LATEST USES OF 10c 1869 AT SHANGHAI



EARLIEST
 RECORDED
 10c 1869 USE
 FROM CHINA

VIA F.M.S.S.
 CHINA
 DEPART
 YOKOHAMA
 2 DEC. 1869

SHANGHAI, CHINA/NEW YORK CITY, 20 NOVEMBER 1869



"U.S.
 POSTAL
 AG'Y
 SHANGHAI"

F.M.S.S.
 ALASKA
 ARRIVE S.F.
 21 MARCH 1873

LATEST
 RECORDED
 10c 1869 USE
 FROM CHINA

SHANGHAI, CHINA/ARGYLE, NEW YORK, 19 FEBRUARY 1873

TO JAPAN
UNUSUAL CONSULAR USES

FROM SHANGHAI

"FO.D. U.S.
CON. GENL.
SHANGHAI"
UNDATED



RATE: NOT KNOWN.
NO DOCUMENTATION
HAS BEEN FOUND
FOR CHINA-JAPAN
SERVICE VIA U.S.
INTERCONSULAR
MAILS. THE FEW
COVERS SHOW
FRANKINGS OF 10c
UNTIL MID-1870
AND THEN 6c.

FOLDED
LETTER
DATED
INTERNALLY:
1 APRIL 1870

SHANGHAI, CHINA/NAGASAKI, JAPAN, 1 APR 1870. VIA BRANCH STEAMER OREGONIAN.
SOLE COVER SO FAR RECORDED SHOWING 10c 1869 IN INTERCONSULAR USE.

FROM U.S.



RATE:
10c PER 1/2 OZ.
EFFECTIVE:
JULY 1867-
31 DEC 1874

VIA P.M.S.S.
GREAT REPUBLIC
DEPART S.F.
1 APRIL 1870

NEW YORK, N.Y./YOKOHAMA, 17 MARCH 1870. ADDRESSED TO SAMUEL ROBBINS BROWN,
THE FIRST AMERICAN MISSIONARY IN JAPAN, ONE OF FIVE AMERICANS ORIGINALLY PER-
MITTED TO LIVE IN NIIGATA. POSTED IN CARE OF THE BRITISH CONSUL AT YOKOHAMA.

FROM JAPAN TO ENGLAND VIA U.S. MAILED
 COMBINED RATE: 10¢ TRANSPACIFIC + 6¢ TRANSATLANTIC
 CONTRASTING TREATMENT OF TRANSIT MAIL

NEW YORK EXCHANGE OFFICE



ON REVERSE:
 "LONDON
 FE 9 71"
 RECEIVER

PM 5 S.
 AMERICA
 DEPART
 YOKOHAMA
 23 DEC 1870
 ARRIVE S.F.
 17 JAN 1871

CUNARD
 ALEPPQ
 DEPART
 NEW YORK
 27 JAN 1871

YOKOHAMA/LONDON, 23 DECEMBER 1870. EXCHANGED AT NEW YORK PER THE U.S.-
 U.K. TREATY, WHICH CALLED FOR A 2¢ CREDIT ON TRANSIT MAIL SUCH AS THIS, TO
 COMPENSATE THE RECEIVING NATION FOR THE COST OF LOCAL DELIVERY. NEW YORK
 PRESUMABLY ACCOUNTED FOR THESE CREDITS ON A WAYBILL.

SAN FRANCISCO EXCHANGE OFFICE



ON REVERSE:
 MAGENTA
 BALLOON
 SF "PAID"
 MAY 14"

PM 5 S.
 JAPAN
 DEPART
 YOKOHAMA
 20 APR 1870
 ARRIVE S.F.
 11 MAY 1870

MANUSCRIPT "2"
 APPLIED AT SF
 TO DESIGNATE
 TRANSIT CREDIT
 TO ENGLAND

TOKYO/LONDON, 18 APRIL 1870. EXCHANGED AT SAN FRANCISCO, WHICH APPLIED
 MAGENTA MANUSCRIPT CREDIT "2" TO EXPRESS THE TRANSIT CREDIT DUE TO U.K.

FROM AND TO JAPAN
 RATE: 10¢ PER HALF OUNCE
 EFFECTIVE: 22 AUGUST 1867—31 DECEMBER 1874

PRIVATE
 SHIP
 LETTER



VIA
 BARQUE
 BENEFACTRESS

DEPART
 YOKOHAMA
 3 FEB 1870.
 ARRIVE
 SAN FRANCISCO
 1 MARCH 1870

YOKOHAMA/BROOKLYN, 3 FEBRUARY 1870. FRANKED AT YOKOHAMA FOR THE 10¢ TRANSPACIFIC RATE, BUT SENT AS A SHIP LETTER. BECAUSE OF THE PREPAYMENT BY STAMP, NO SHIP-LETTER RATING OR COLLECTION WAS APPLIED.

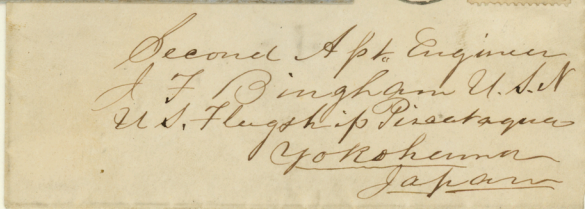
BOTH SIDES OF THE BINGHAM CORRESPONDENCE

CHINA
 AND
 JAPAN
 STEAM
 SERVICE



BELOW: BUFFALO/YOKOHAMA,
 23 AUGUST 1869. VIA
 PM55 JAPAN, DEPARTING
 SAN FRANCISCO 4 SEP-
 TEMBER 1869. EARLIEST
 TRANSPACIFIC 10¢ 1869
 COVER TO JAPAN.

ABOVE: YOKOHAMA/RIDGEFIELD,
 CT., AUGUST 1869. FRANKED
 AT YOKOHAMA BUT CANCELED
 AT SAN FRANCISCO. VIA PM55
 GREAT REPUBLIC, DEPARTING
 YOKOHAMA 30 AUGUST 1869
 AND ARRIVING SAN FRANCISCO
 SEPTEMBER 18. ONLY EIGHT
 10¢ 1869 COVERS ARE KNOWN
 SHOWING THE CJS5 OVAL
 MARKING, WHICH WAS APPLIED
 AT SAN FRANCISCO



FROM JAPAN TO ENGLAND VIA U.S. MAILS

COMBINED RATE: 10¢ TRANSPACIFIC + 6¢ TRANSATLANTIC

HIOGO DOUBLE CIRCLE



ON REVERSE:
"LONDON
MY 6 71"
RECEIVER

HIOGO, JAPAN/KENT, ENGLAND, 18 MARCH 1871. WHILE ABUNDANT ON OFF-COVER STAMPS, THE HIOGO DOUBLE CIRCLE IS VERY SCARCE ON COVER. ONLY NINE COVERS ARE KNOWN WITH THIS MARKING, SIX OF THEM 10¢ 1869 COVERS. EXCHANGED THROUGH NEW YORK, SO NO 2¢ TRANSIT CREDIT.

FROM JAPAN

YOKOHAMA CIRCULAR DATESTAMP

PM.S.S.
JAPAN
DEPART
YOKOHAMA
22 JULY 1870
ARRIVE SF
12 AUG 1870



EARLIEST
KNOWN USE OF
YOKOHAMA
CIRCULAR
DATESTAMP.
TWO COVERS
RECORDED
FROM THIS DATE.

YOKOHAMA/WILMINGTON, 22 JULY 1870.

FROM THE FIRST
U.S.-KOREAN WAR

DOUBLE-OVAL
PURSER'S MARK:
"U.S.S. ALASKA,
MAR 23 1871"



PM.S.S.
AMERICA
DEPART
YOKOHAMA
24 MARCH 1871

ARRIVE
SAN FRANCISCO
15 APRIL 1871

POSTED ON BOARD THE U.S.S. ALASKA, PART OF A SQUADRON OF U.S. NAVAL AND MARINE FORCES GATHERED OFF JAPAN TO PREPARE FOR AN INVASION OF KOREA. ALASKA WAS ONE OF FIVE U.S. NAVAL VESSELS THAT PARTICIPATED IN THE JUNE 10, 1871 ASSAULT ON A GROUP OF FORTRESSES GUARDING THE MOUTH OF THE HAN RIVER LEADING TO SEOUL. PHILATELIC ARTIFACTS OF THIS BRIEF WAR, AMERICA'S FIRST AMBIBIOUS LANDING ON THE ASIAN MAINLAND, ARE VERY SCARCE.

10c 1869

1875 REISSUE



ONE OF THREE RECORDED BLOCKS



REGISTRY
CANCEL



SPECIMEN B
OVERPRINT

ONLY
RECORDED
EXAMPLE

ONE SET SPECIMEN POSTAGE STAMPS,

ISSUE OF 1869.

Denominations--1, 2, 3, 6, 10, 12, 15, 24, 30, and 90 cents. Value, \$1.93.

THIS P.O. ENVELOPE ONCE HELD AN 1869 REISSUE SET.

10c 1869 REISSUE ON COVER

MULREADY FACSIMILE ENVELOPE



BOSTON/MODENA, ITALY, 11 APRIL 1882. REISSUED 10c 1869 STAMP PLUS 2c, 3c AND 5c AMERICAN BANK NOTE STAMPS PAYING 2 x 5c UPU RATE PLUS 10c REGISTRY FEE. SENT BY EARLY BOSTON STAMP DEALER E.A. HOLTON TO CHARLES DIENA, FOUNDER OF AN ITALIAN STAMP-DEALING DYNASTY. ONE OF FOUR RECORDED 10c 1869 REISSUE COVERS, ALL OF WHICH WERE MAILED IN THE EARLY 1880s BY STAMP DEALERS.

CANADA 82



TORONTO, CANADA Du 20 au 24 mai 1982

TORONTO, CANADA May 20—24, 1982

CANADA 82



TORONTO, CANADA Du 20 au 24 mai 1982

TORONTO, CANADA May 20—24, 1982

L'administration postale des Etats-Unis est fière d'émettre cette carte-souvenir pour marquer "CANADA 82," l'exposition philatélique mondiale de la jeunesse. Elle la dédie aux jeunes du monde entier qui ont déjà découvert les plaisirs de la philatélie, passe-temps merveilleux auquel on peut s'adonner durant toute une vie, seul ou avec des compagnons, peu importe sa formation, sa vigueur ou ses revenus. La philatélie favorise la compréhension des autres cultures; c'est pourquoi l'administration postale de mon pays a choisi de reproduire des timbres représentant les symboles des Etats-Unis et du Canada, les deux pays qui ont la plus longue frontière non gardée du monde. Le timbre canadien, représentant un castor, a été émis en 1859, et le timbre américain, sur lequel figurent un aigle et l'écu des Etats-Unis, en 1869.

The U. S. Postal Service is pleased to honor CANADA 82, an international philatelic youth exhibition, by issuing this souvenir card. The card is dedicated to young people everywhere who already have discovered the joys of stamp collecting . . . a hobby that can last a lifetime . . . one that does not depend on age, education, stamina, or income . . . one that can be enjoyed in solitude or shared with companions. Stamp collecting promotes understanding of other cultures, and it is in recognition of this that we have chosen for reproduction on this card stamps that bear emblems of the United States and Canada, two countries that share the longest unguarded border in the world. The Canadian Beaver stamp was issued in 1859, and the United States Shield and Eagle stamp in 1869.



UNITED STATES POSTAL SERVICE 1982

William F. Bolger
Postmaster General

USING AN INTAGLIO REPRODUCTION BASED ON THE ORIGINAL 10c 1869 DIE (AND AN OFFSET-PRINTED IMITATION OF CANADA'S 1859 BEAVER STAMP). USPS CREATED THIS SOUVENIR CARD FOR SALE AT A YOUTH SHOW IN TORONTO IN 1982. AT TOP: THE CARD AS ISSUED. AT BOTTOM: MISSING 10c 1869 VARIETY, THE ONLY RECORDED EXAMPLE. APES CERTIFICATE #109379.