

Letters - Simple

A



LS-A 1 [USCC 5416; Rohloff K-2; USCC 5416]
Waterbury, CT [] 6/13/1866-6/20/1866

A



LS-A 2
Waterbury, CT [] 1866

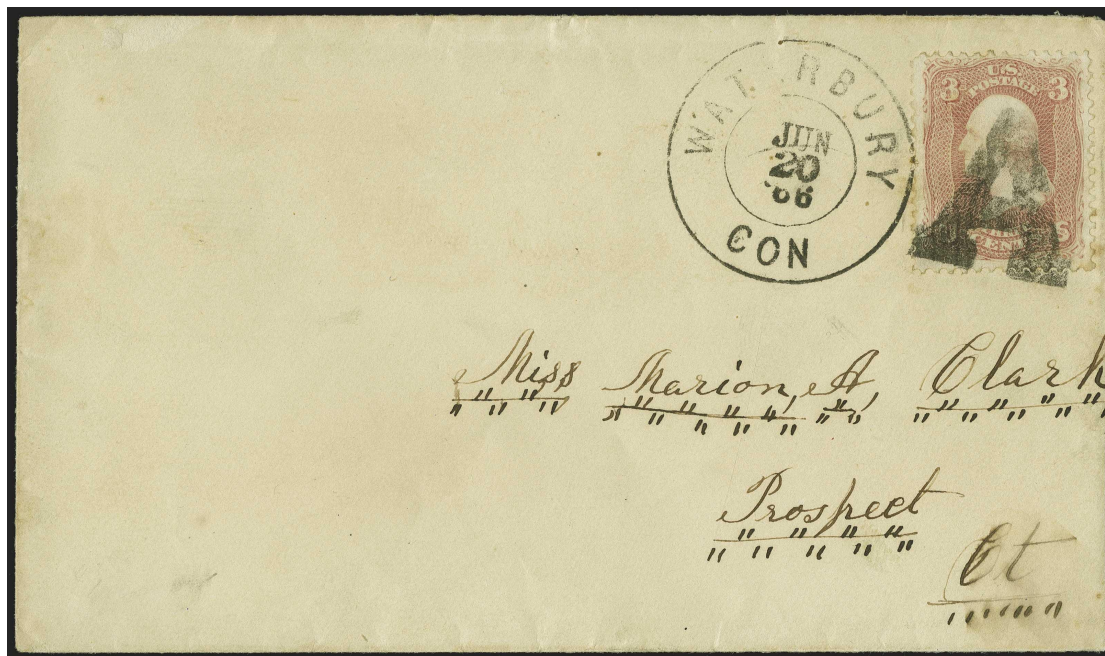


possibly "V" (?)

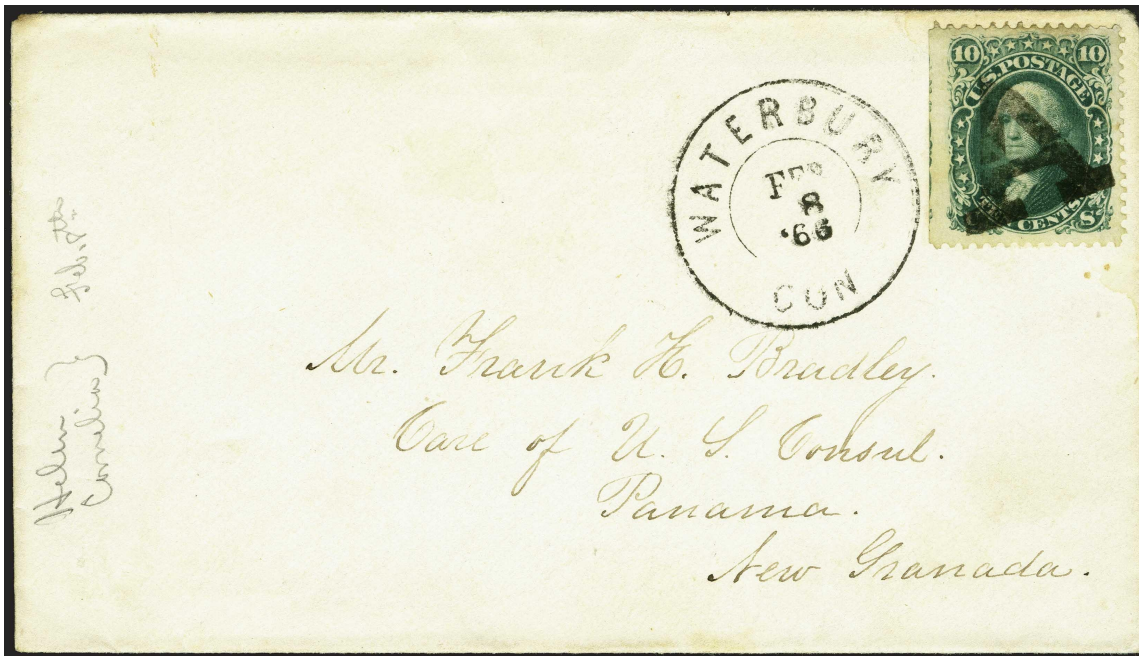
LS-A 2A
1861



LS-A 1



LS-A 1



LSA 2



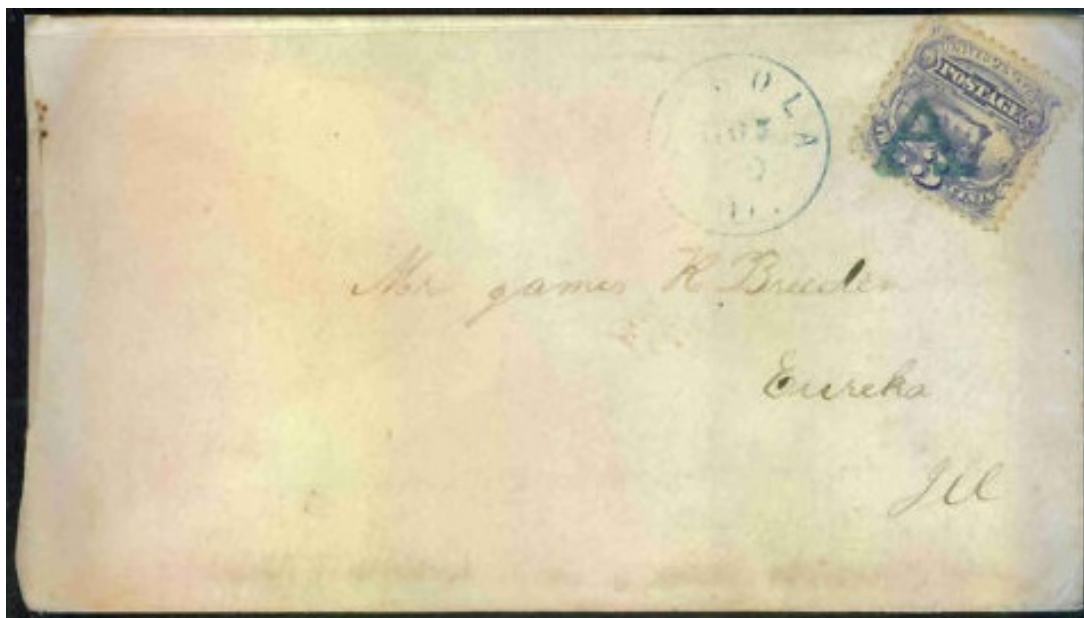
LS-A 3
Allegheny, PA 1861



LS-A 3A blue
Arcola, IL 1869



LS-A 3B
1867



LSA 3A

Letters - Simple



LS-A 3C
1861



LS-A 4
Mohawk, NY 1861



LS-A 5
Greenwich, NY 1861-67



LS-A5A
1869



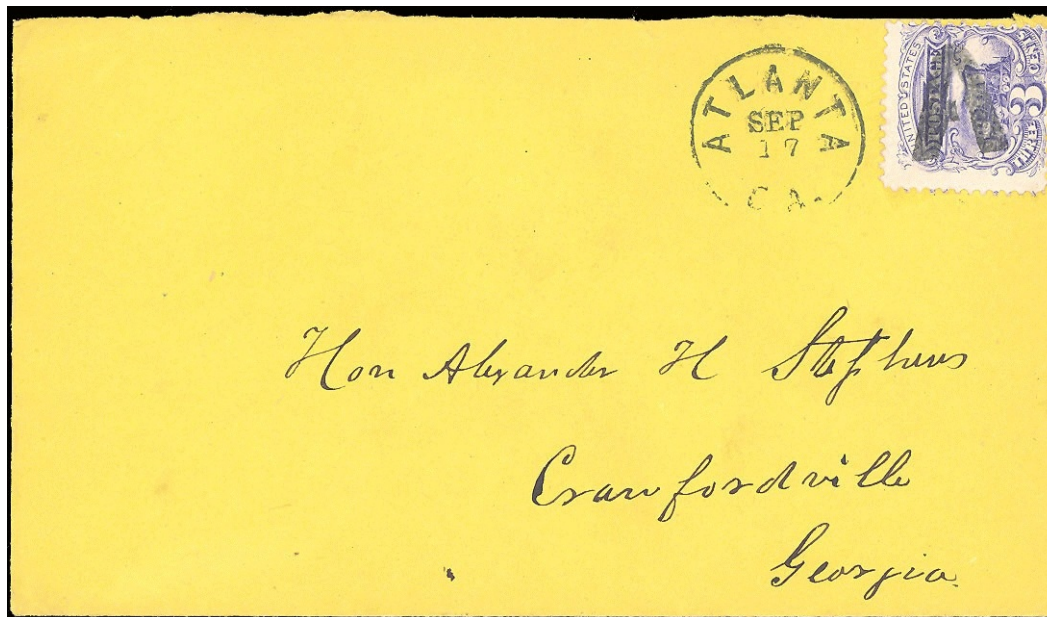
LS-A5B
1861



LS-A 6 blue
1861-67



LS-A 7
Atlanta, GA 1869



LSA 7

Letters - Simple



LS-A 8
Alpina [DPO 1840-1841(?),
MI 9/17/1869



LS-A 9 [USCC 5417]
1861-66




LS-A 10 red
1862-66

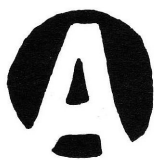


LS-A 11 magenta
1861



LS-A 12
Akron, OH  1861

Letters - Simple



LS-A 13
New York, 1/21/NY1869



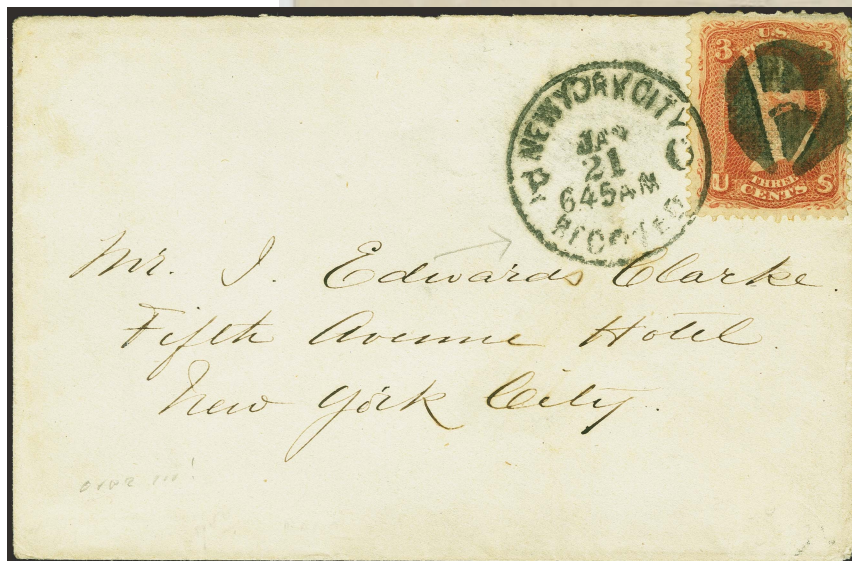
LS-A 14
New York, NY 1/21/1869



LS-A 14B
1869



LS-A 14



LS-A 13



LS-A 15
Danbury, CT1869



LS-A 15A [USCC 5465]
Danbury, CT1869

Letters - Simple



LS-A 15B
1869



LS-A 15C
Saratoga Springs, NY
7/22/1869



LS-A 15C



LS-A 16
Ansonia, CT 1869



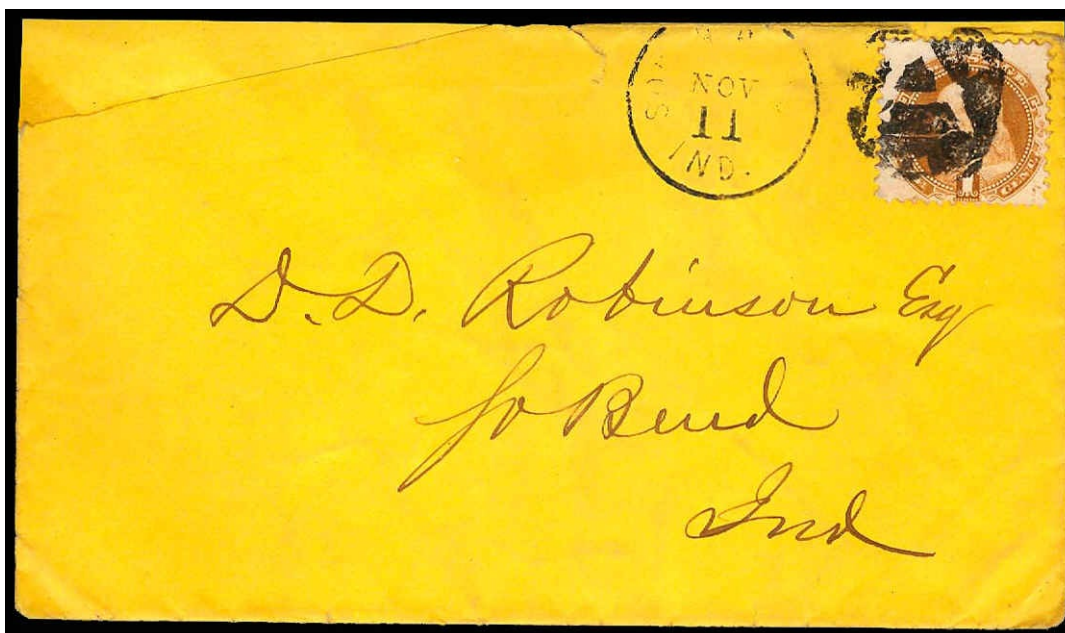
LS-A 17
1869



LS-A 18 blue [USCC 5436]
Louisville, KY 1861-66



LS-A 18A
South Bend, IN
11/11/1869



LS-A 18A

Letters - Simple



LS-A 18B
1869



LS-A 19
1867



LS-A 19A blue [USCC 5442]
1861



LS-A 19B
Westford, MA □ 1861



LS-A 19C
New York, NY □ 8/16/1869



LS-A 19D
1861, 1867



LS-A 19E
1861



LS-A 19B

Letters - Simple



LS-A 19C



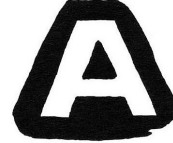
LS-A 20
1869



PS-C 1
Alliance, OH 1861-67



LS-A 22
1861

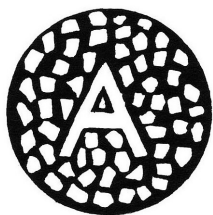


LS-A 23 blue
Louisville, KY 1861

Letters - Simple



LS-A 24
Abingdon, IL 1861



worn state

LS-A 25 [USCC 5435]
Amherst, MA 3/15/(1863?)- 4/4/1863



LS-A 27
New York, NY 1869



Hebrew aleph (a)

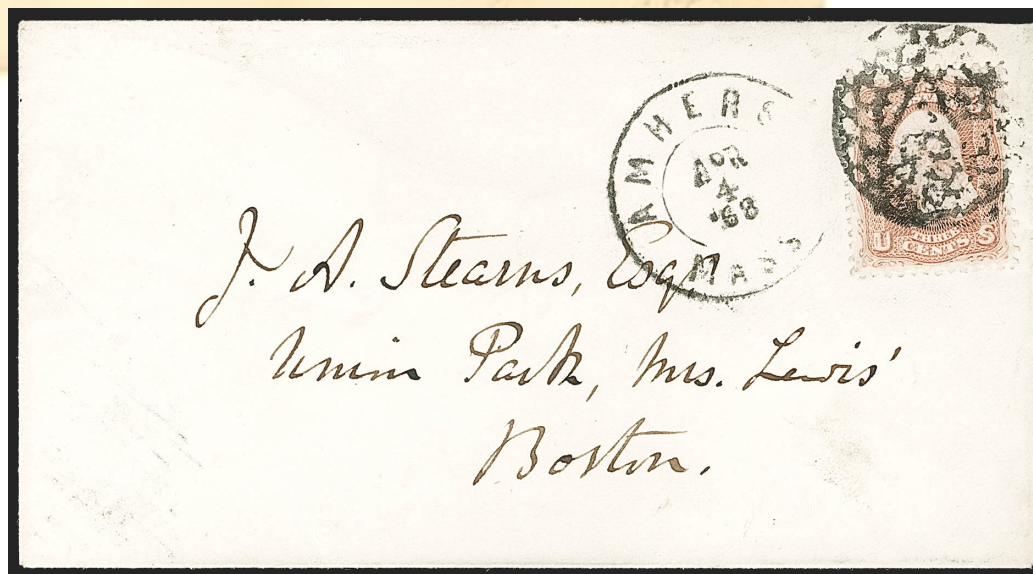
LS-A 28
1867



LS-A 25



LS-A 25



LS-A 25

Letters - Simple



LS-A 25



updated March 20, 2023 (3:11pm)