

Letters - Simple



LS-B 1
Bridgeport, CT 1861



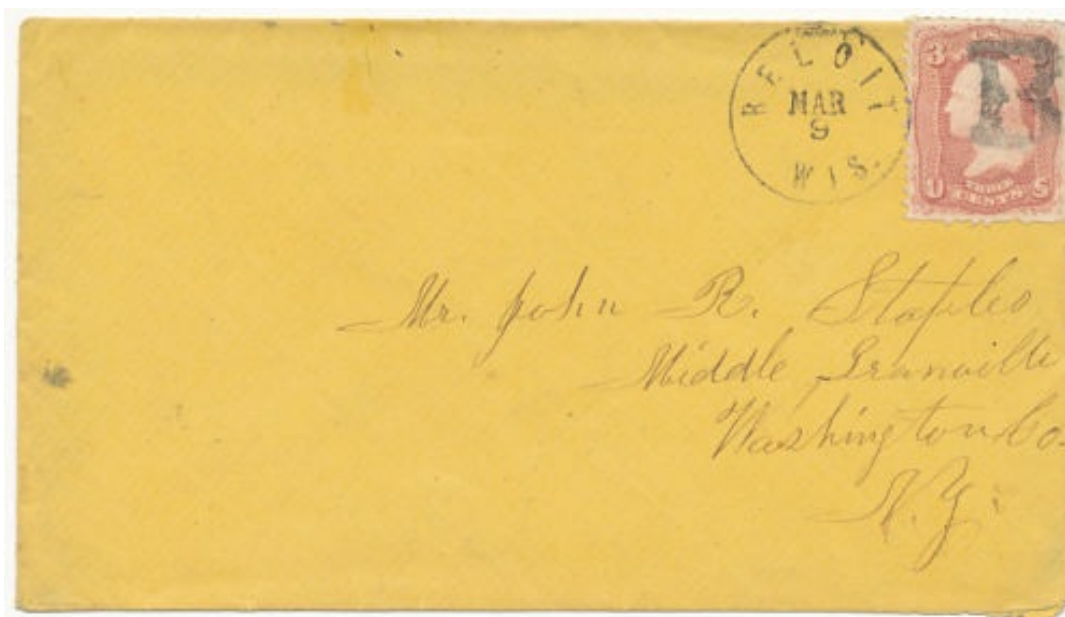
LS-B 1a
Bridgeport, CT 1861



smaller type



LS-B 3 [USCC 5497; WPHS 25]
Beloit, WI 1861



LS-B 3

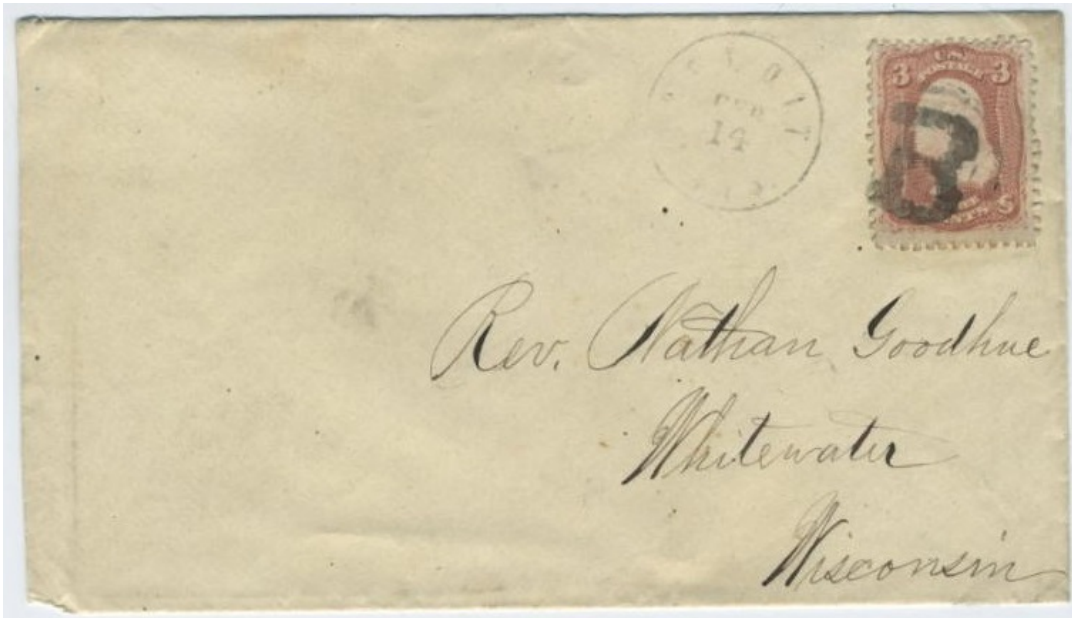


larger type

LS-B 4 [WPHS 26]
Beloit, WI 1861-69



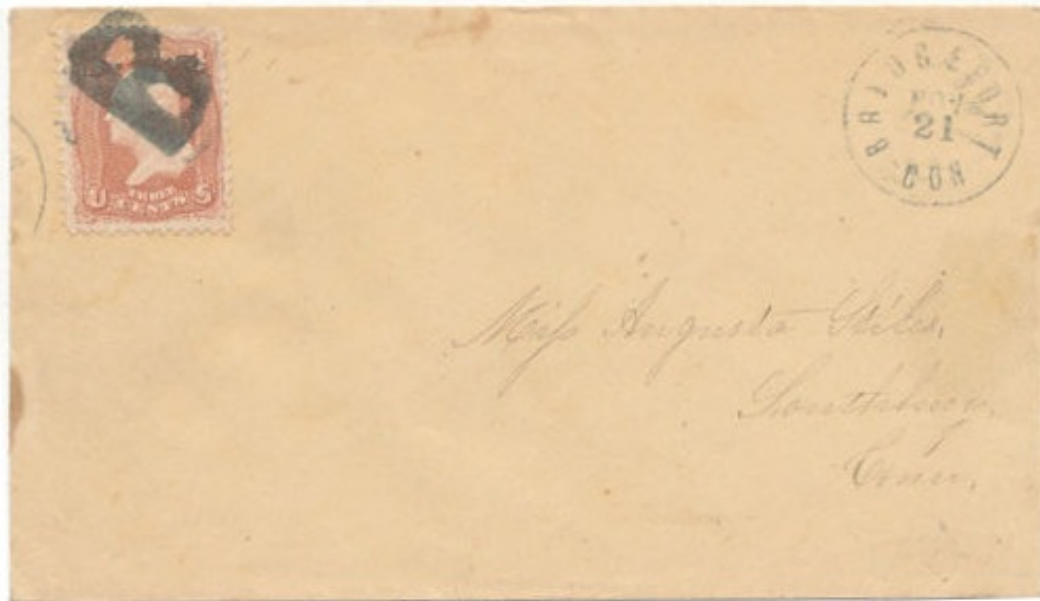
LS-B 4A blue [USCC 5501]
1861



LS-B4



LS-B 5
Bridgeport, CT 1861



LS-B5

Letters - Simple

B

LS-B 6
1861

B



LS-B 6A
1861

B

LS-B 7
Brattleboro, VT 1861

B

LS-B 7A blue
Brattleboro, VT 1861

B

LS-B 8
Portland, PA 1861-69

B

LS-B 9
Bristol, PA 1861-67



LS-B 9A
1861



LS-B 7A

B



LS-B 10 blue
1869

Letters - Simple



LS-B 10A
1861

B



LS-B 11 blue
Belvidere, IL 5/2/1869-7/8/1870



LS-B 11



LS-B 11

B



LS-B 12
1869



LS-B 12A
Brattleboro, MA 1867



LS-B 12B
Peoria, IL 1867



LS-B 12C
1851

Letters - Simple



LS-B12A



LS-B 13
1869



LS-B 14
Brockport, ME 1869



LS-B 15
Bloomington, IL 1869



LS-B 16
1869



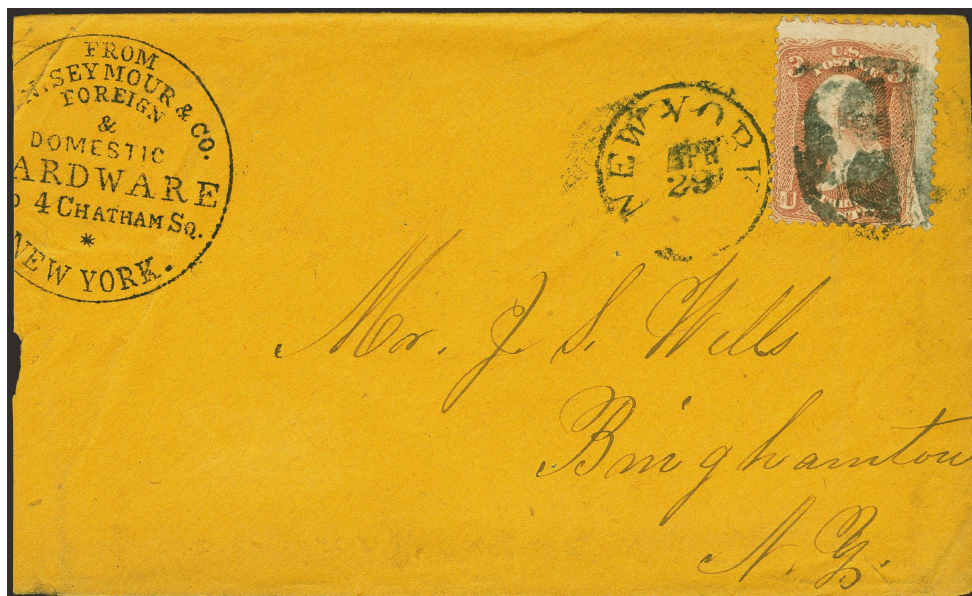
LS-B 16A
1867

Letters - Simple

<p>Enos Bunker Postmaster 6/30/1864-8/18/1868</p>	<p>LS-B 17 New York, NY <input type="checkbox"/> 4/29/1865(?)</p>	<p>LS-B 18 Bedford, IL <input type="checkbox"/> 1869</p>		












LS-B 16B

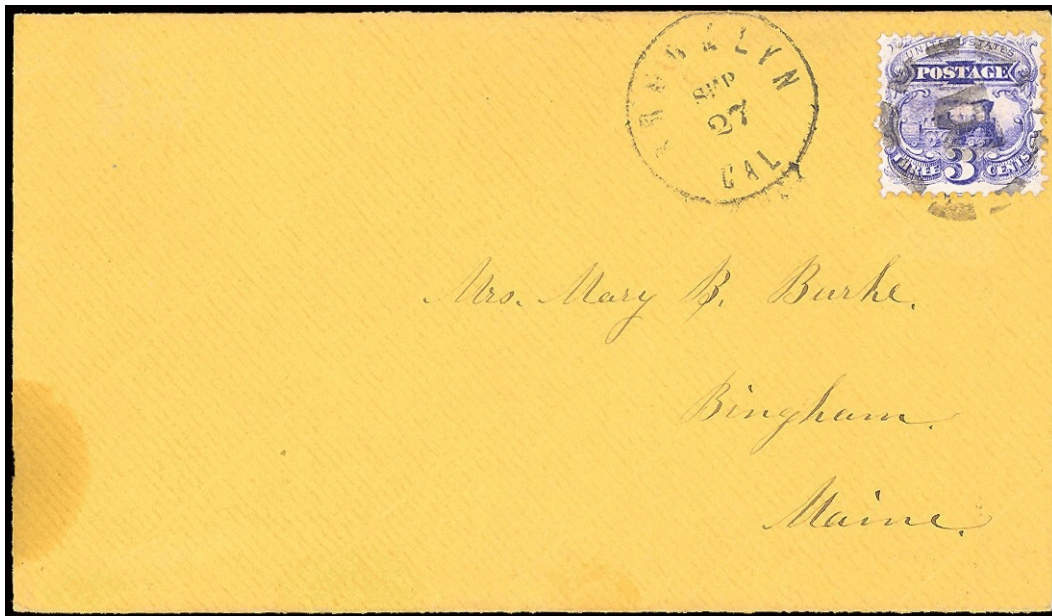


LS-B 17

--	--	--	--	--

Letters - Simple

<p>LS-B 19 Brattleboro, VT 1869</p>	<p>LS-B 19A [USCC 5531] 1861</p>	<p>LS-B 20 Sparta, GA 1861</p>	
	 <p>LS-B 21 [WPHS 31] Kilbourn City, WI 1857</p>	 <p>LS-B 22 [WPHS 32] Mazomanie, WI 1861</p>	 <p>FR-M5 2 Rutland, VT 1868-1869</p>
 <p>LS-B 23 Brooklyn, CA 9/27/1869</p>	  <p>LS-B 24 Leavenworth, KS 1867</p>	 <p>sideways "B" (?)</p>	 <p>PH-M 5 Mackinac, MI 1861</p>



LS-B 23

Letters - Simple



LS-B 24



updated June 7, 2022 (2:26pm)