

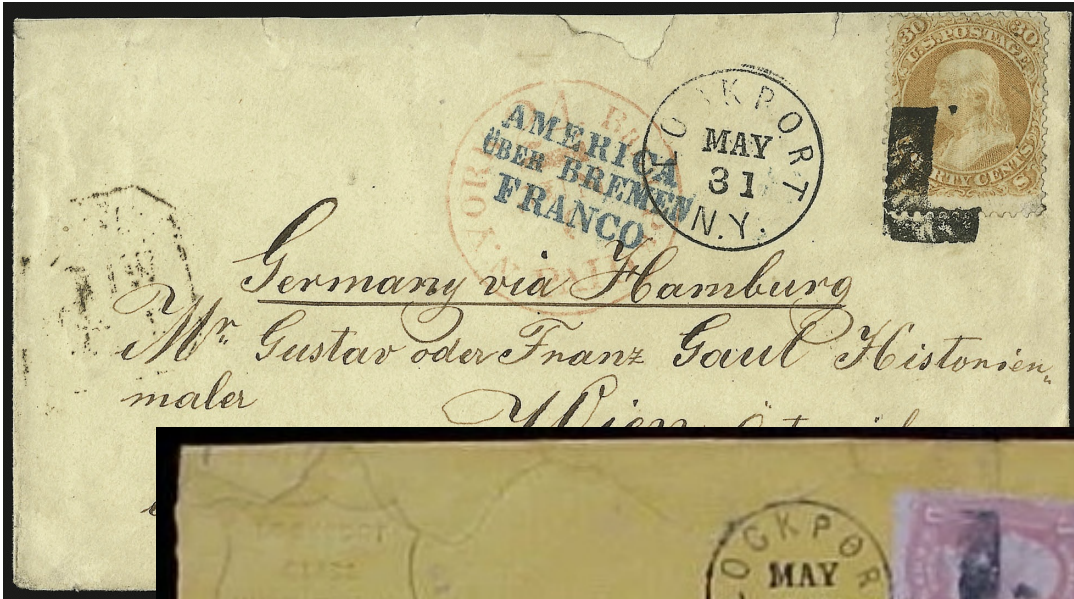
Letters - Simple

L

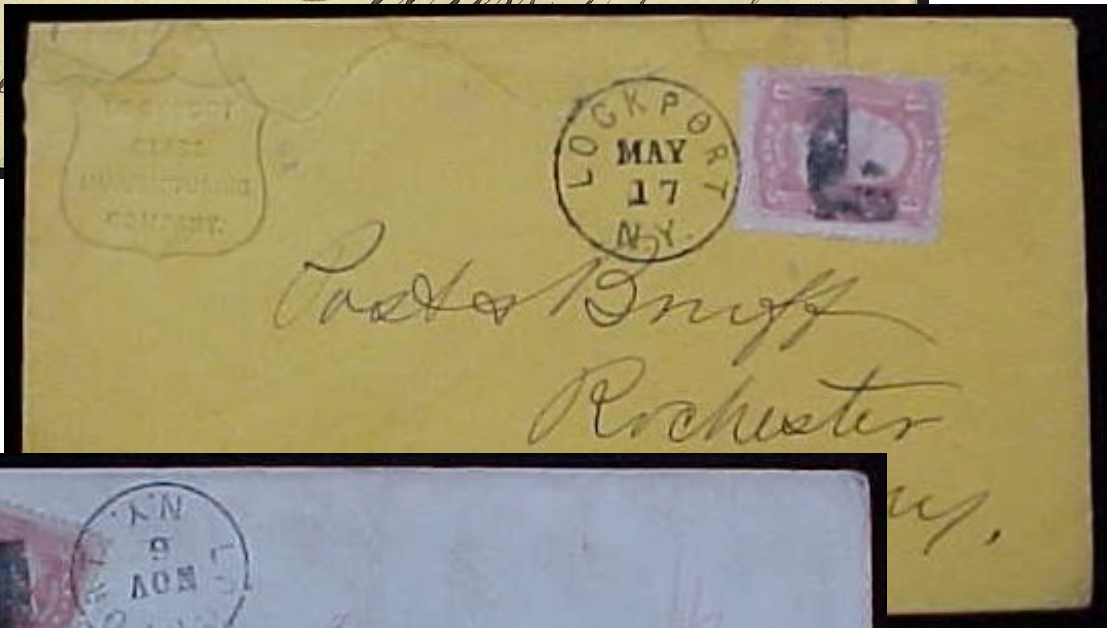


LS-L 1
Lockport, NY 1861

LSL 1



LSL 1



LSL 1





LS-L 1



LS-L 1



"L" reversed

LS-L 1A
Lockport, NY 1861



LS-L 2 [USCC 5961]
Lockport, NY 1861



LS-L 2



LS-L 2



LS-L 3
Lockport, NY 1861



LS-L 4
Logansport, IN 1861



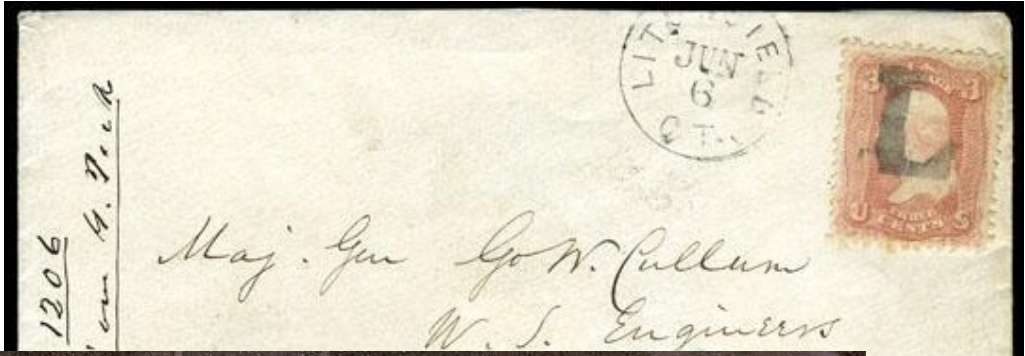
LS-L 3

Letters - Simple

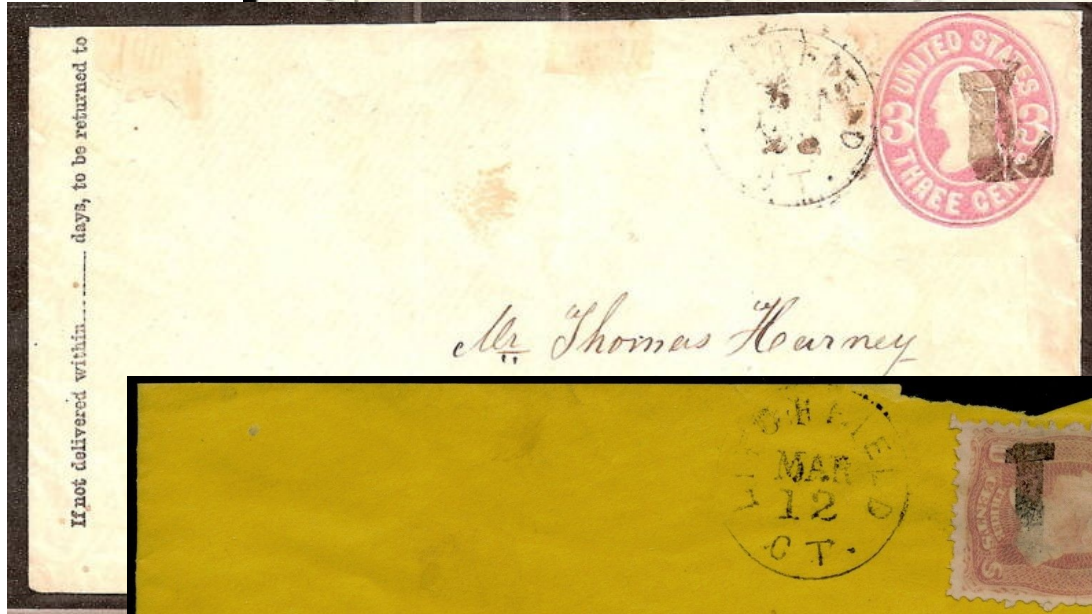
L L



LS-L 5 [USCC 5897]
Litchfield, CT 1861



LS-L 5















LS-L 5



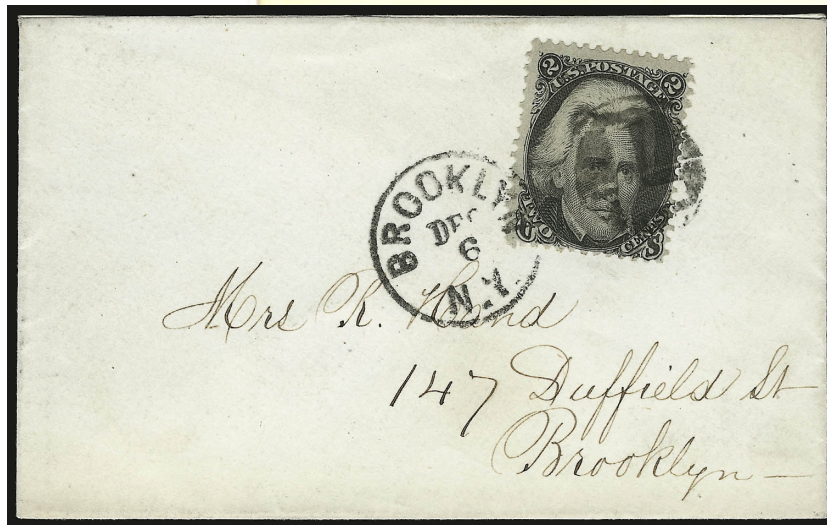
LS-L 5

Letters - Simple

 <p>LS-L 6 red 1861-66</p>	 <p>LS-L 7 blue 1867</p>	 <p>LS-L 8 blue South Deerfield, MA 1869</p>	 <p>LS-L 9 [USCC 5899] Alton, IL 1861</p>	
				
      <p>LS-L 10 Logansport, IN 1861</p> <p>LS-L 11 [USCC 5913] Brooklyn, NY 1861</p>				



LS-S11



LSL 11

Letters - Simple



LS-L 11A [USCC 5895]
1861



LS-L 12
Mifflintown, PA 1861



LS-L 12



updated March 23, 2023 (9:13am)