

Letters - Simple

**M**



LS-M 1 [USCC 5924]  
1861

**M**

LS-M 2  
Monticello, IN 1861

**M**

LS-M 3  
1861



LS-M 2



LS-M 2

**M**

LS-M 4  
Mayville, NY 1867

**M**

LS-M 4A blue  
Galva, IL 1864

**M**

LS-M 4  
Mayville, NY 1867

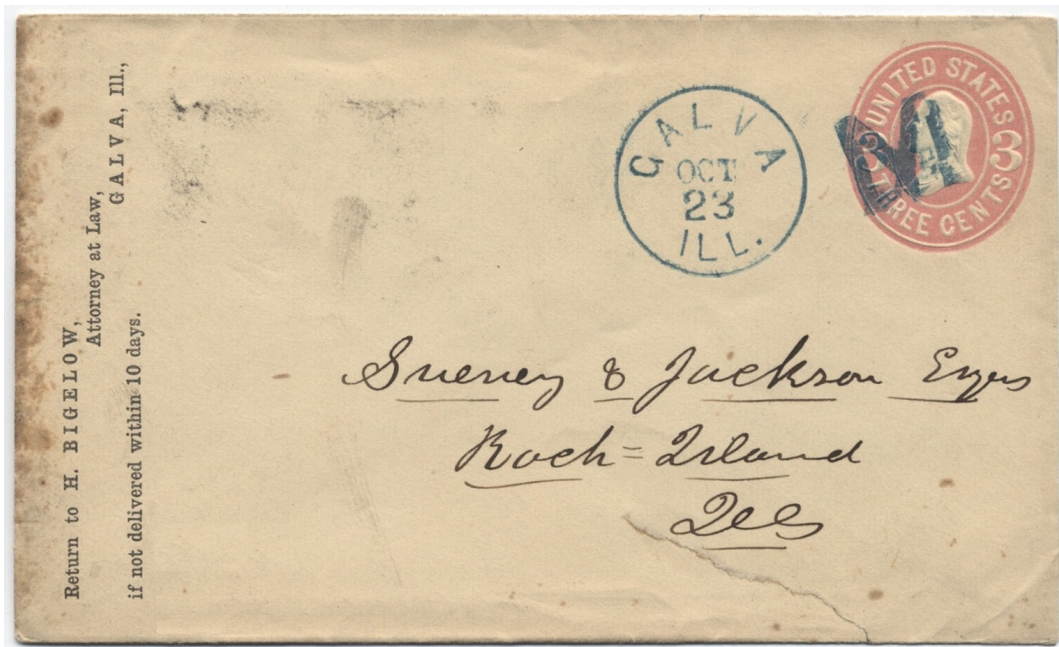
**M**

LS-M 5  
1869



LS-M 5A  
1861

Letters - Simple



LS-M 4A

**M**

LS-M 6  
1869



LS-M 6A  
1861

**M**

LS-M 7 red  
1869

**M**



LS-M 8 red [USCC 5944]  
Manchester, CT 1869

**M**

LS-M 9  
Knoxville, IA 1869

**N**

LS-M 10  
1869

**M**

LS-M 11  
1861-66

Letters - Simple

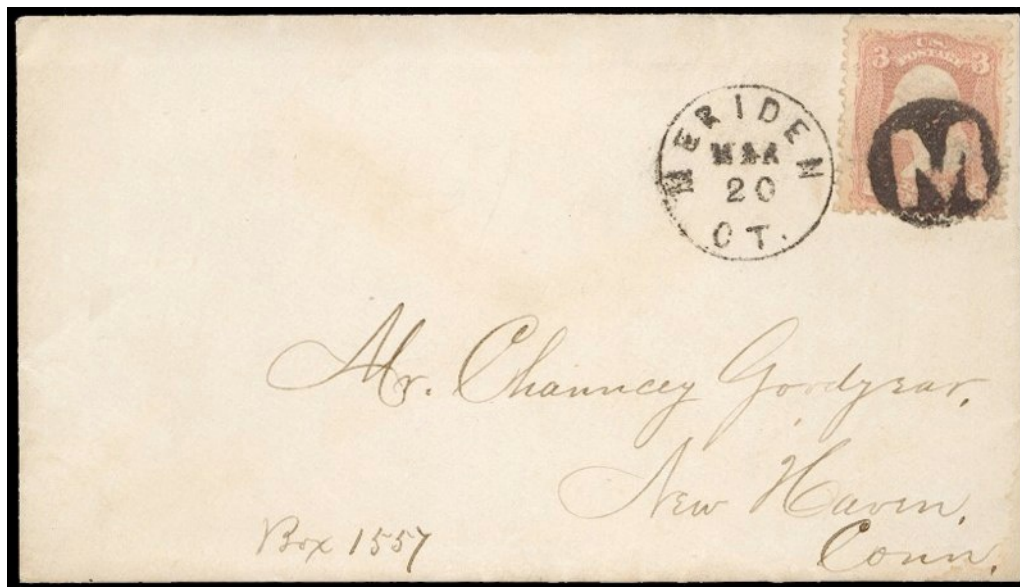


LS-M 12 [USCC 5950]  
Meriden, CT 1861

LS-M 12A  
1861



LS-M 12



LS-M 12



LS-M 13  
1861



LS-M 14  
West Meriden, CT 1861



LS-M 15  
Meriden, CT 1861



LS-M 16 [USCC 5945]  
Paw Paw, MI 1861



updated February 22, 2023 (9:12am)