

Letters - Simple

N

Two sizes:
a. 12x13mm
b. 14x13mm

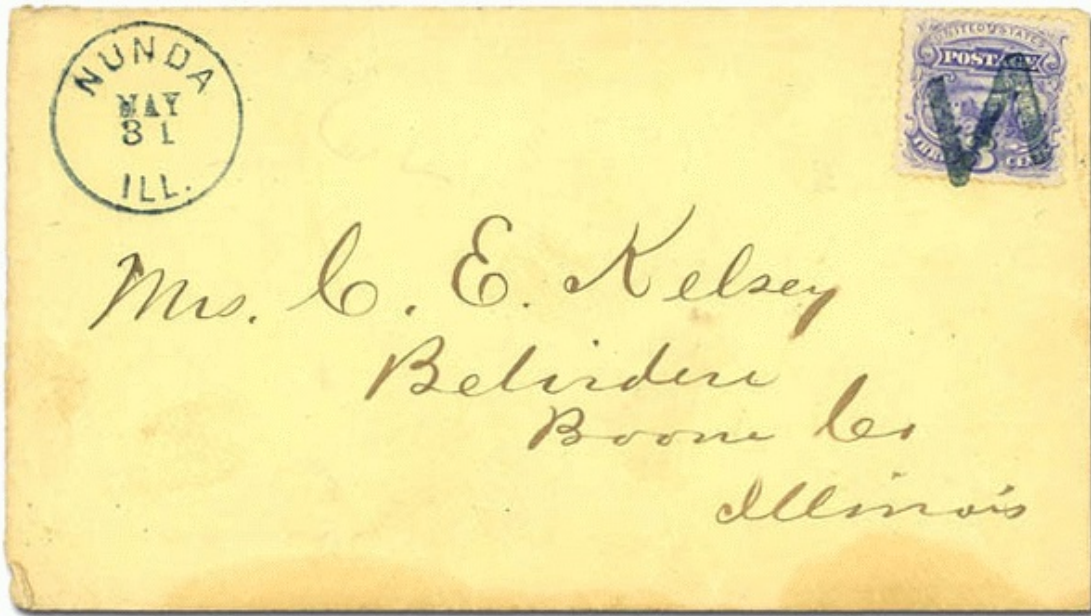
LS-N 1
New Bern(e), NC 1864

N

LS-N 2 green, black
[USCC 5984]
Nunda, IL 1869



LS-N 2A
Norwalk, CT 1/3/1870-1/12/1870



LS-N 2



LS-N 2A



LS-N 2A

Letters - Simple



LS-N 2B
New Britain, CT 3/4/1870



LS-N 3
Greenfield, MA 1869



LS-N 4
Albany, NY 1861



LS-N 2B

Letters - Simple



LS-N 4A
Nagasaki, Japan 8/22/1870



LS-N 4A



LS-N 5 [USCC 5971]
Oxford, NY 1861



Letters - Simple



LS-N 7
1869



LS-N 7A
Nashua, NH □ 8/10/1870



LS-N 8
Albany, NY □ 1861



LS-N 7A



LS-N 7A



LS-N 7A

Letters - Simple



LS-N 8A
1867



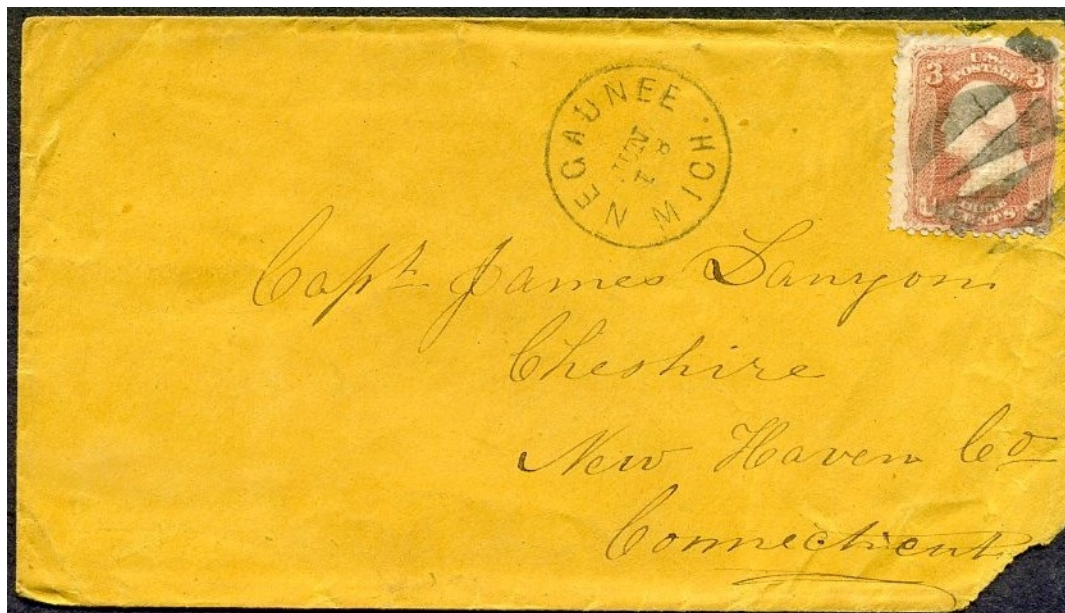
LS-N 8B
Negaunee, MI [] 1867



LS-N 8C
1869



LS-N 9
Norwalk, CT [] 1865



LS-N 8B



LS-N 10 blue
Newark, OH [] 1861



LS-N 10A
1868



LS-N 11 [USCC 5991]
New Bern(e), NC [] 1861



LS-N 12
Norwich, CT 1867

Letters - Simple



LS-N 13

two sizes:
a. 18x19mm
b. 18x17mm

LS-N 13
New Bern(e), NC 1861



LS-N 14
New Bern(e), NC
4/24/1866

LS-N 14A
New Bern(e), NC
2/25/1866

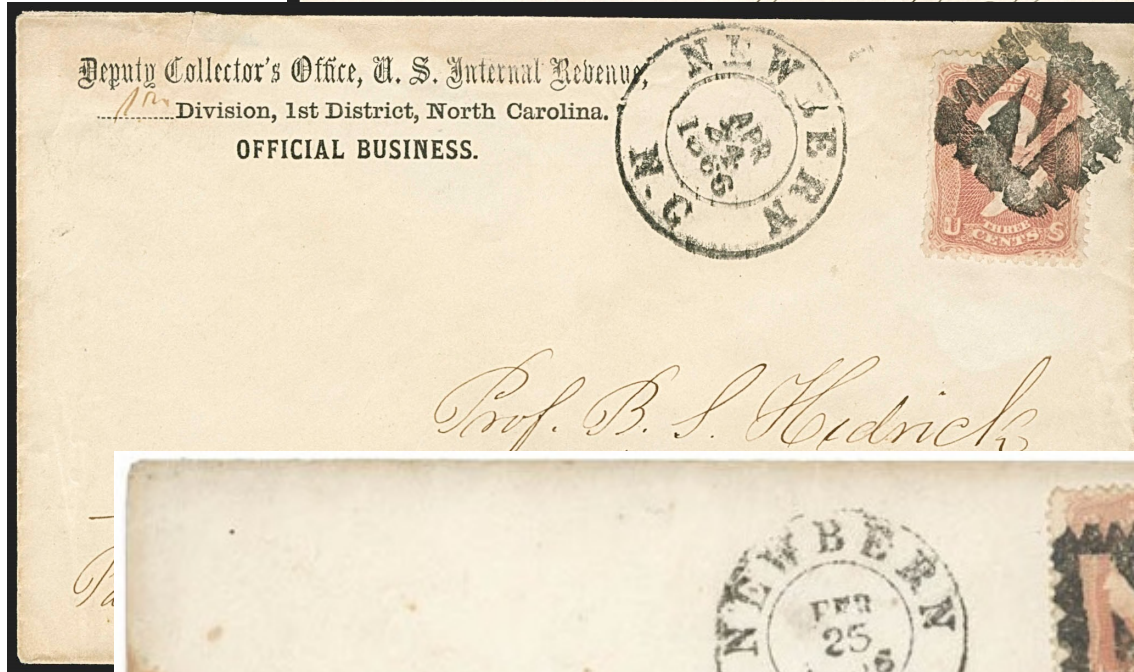


two sizes:
a. 18x20mm
b. 10x23mm

LS-N 15
New Bern(e), NC 1861-64



LS-N 13



LS-N 14

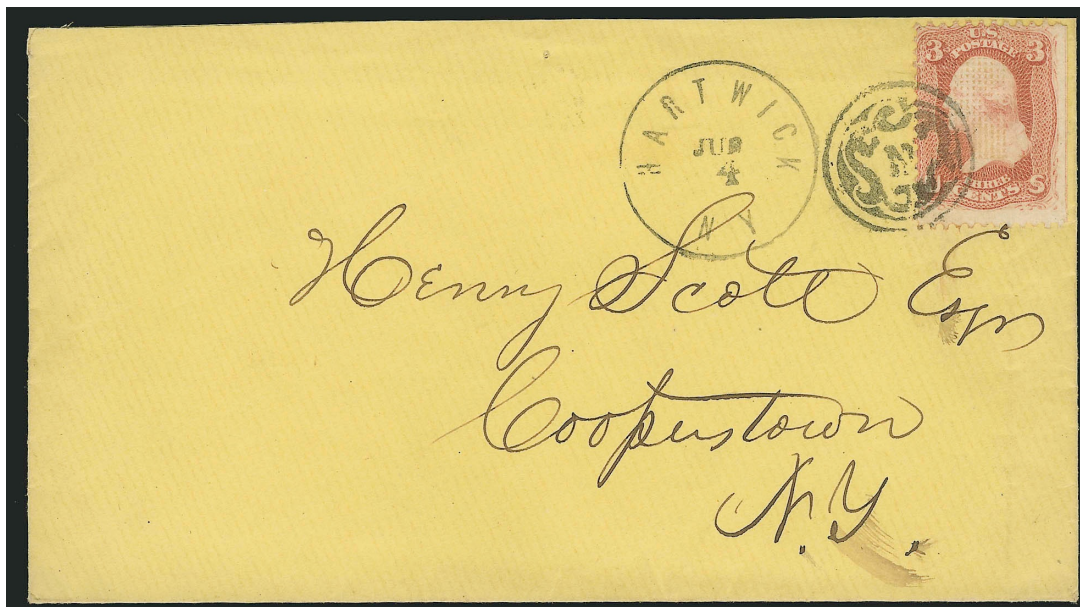


LS-N 14A

Letters - Simple



LS-N 16
Hartwick, NY 1861



LS-N 16



LS-N 17
1861



LS-N 18
1861



updated June 18, 2022 (9:47am)