

Pictorial - Insects



PA-I 1 [USCC 506]
Cincinnati, OH 1857



PA-I 2
New York, NY 1861-66



also used as receiving backstamp

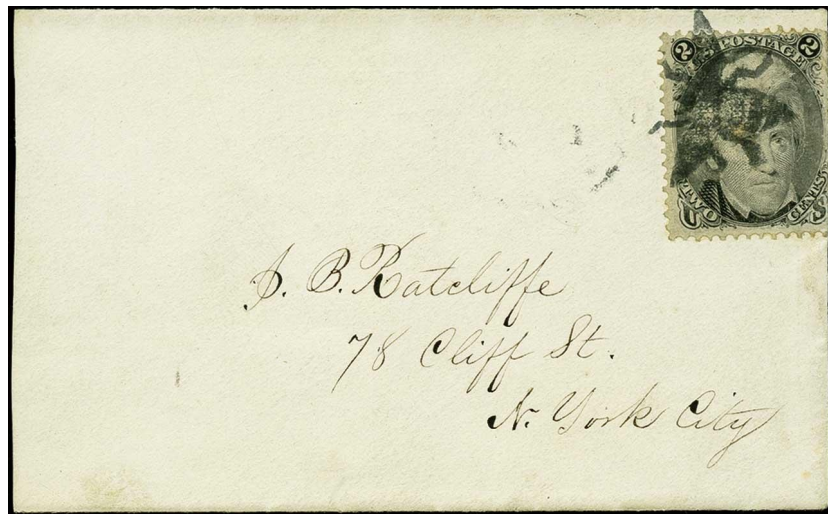
PA-I 2A blue, black [USCC 495]
New York, NY 1861



PA-I 3 red, blue, black
New York, NY 1867



PA-I 4
New York, NY(?) 1869




PA-I 3

Pictorial - Insects



worn device

PA-I 5

East Troy, WI  8/15/1869-11/29/1869

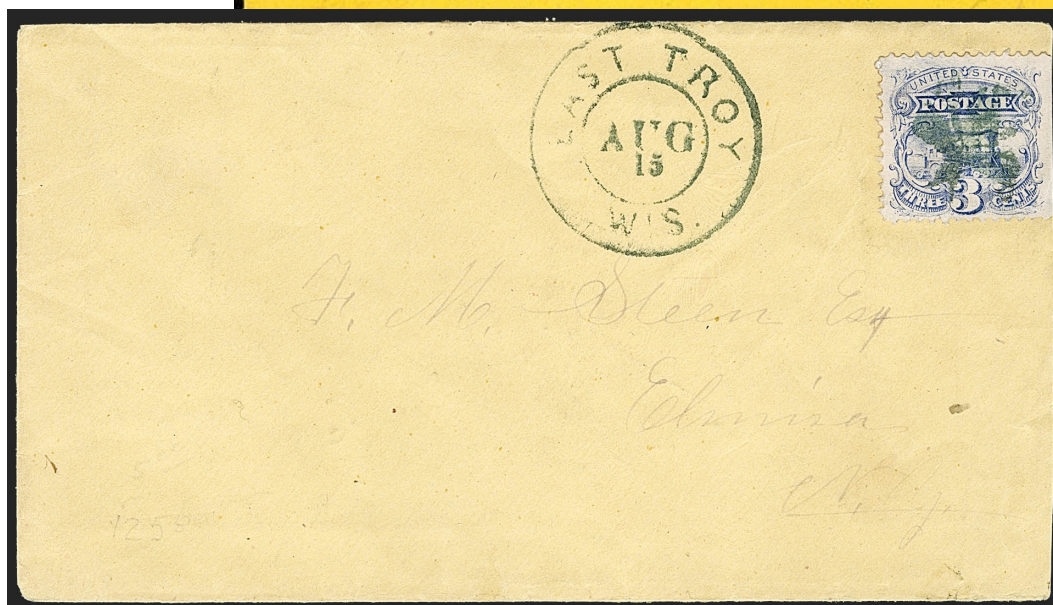


PA-I 6

Kansas City, MO 1869



PA-I 5



PA-I 5




PA-I 7
Canastota, NY 1869



also used for receiving backstamp



PA-I 8
New York, NY  1869



receiving backstamp

PA-I 8A red [USCC 494]
New York, NY 1861

Pictorial - Insects



PA-I-8



PA-I-9
1869



PA-I-10
Leroy, NY 1861

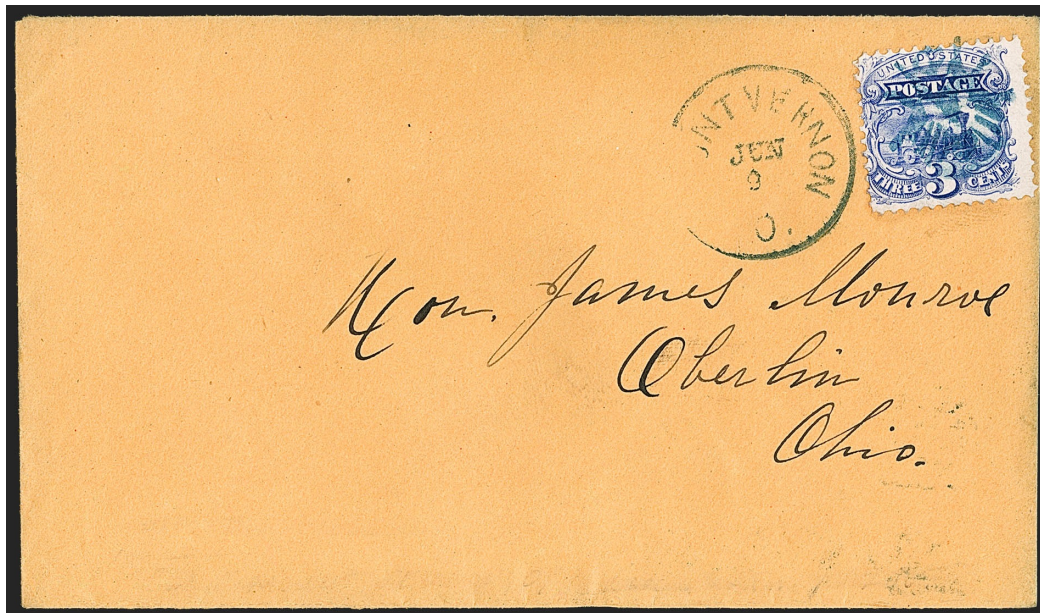


PA-I-11
New Haven, CT 1869

Pictorial - Insects



PA-I 12 blue
Mount Vernon, OH □ 6/9/1869



PA-I 12



PA-I 12



PA-I 13
1869




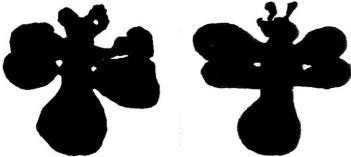






"Housefly"



PA-I 14
1861

Pictorial - Insects

 <p>PA-I 15 blue [USCC 496] Freeport, IL 1867-69</p>			
 <p>PA-I 16 Freeport, IL 1869</p>	 <p>PA-I 17 Gaylordsville, CT 1861</p>	 <p>"moth" PA-I 18 [USCC 514] 1861-69</p>	
 <p>PA-I 19 Guilford, CT 1869</p>	 <p>"Bug" PA-I 20 1869</p>	 <p>"Beetle" PA-I 21 1861</p>	 <p>"Butterfly" PA-I 22 1861</p>

Pictorial - Insects



stylized butterfly"



PA-I 23 blue, black [USCC 6359]
Worcester, MA 1857, 1861



PA-I 25
1861



PA-I 26
1861



PA-I 23



PA-I 23



PA-I 27
1861



PA-I 28
1861



PA-I 29
Elyria, PA(?) 1861



PA-I 30
1867



PA-I 31
1867

Pictorial - Insects



PA-I 32
Zanesville, OH 1869



PA-I 32A
1869

Pictorial - Insects



"large bee"

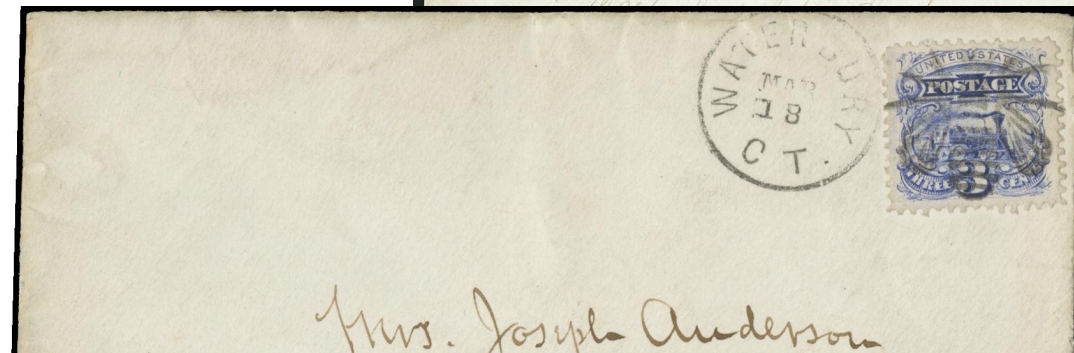


Fake

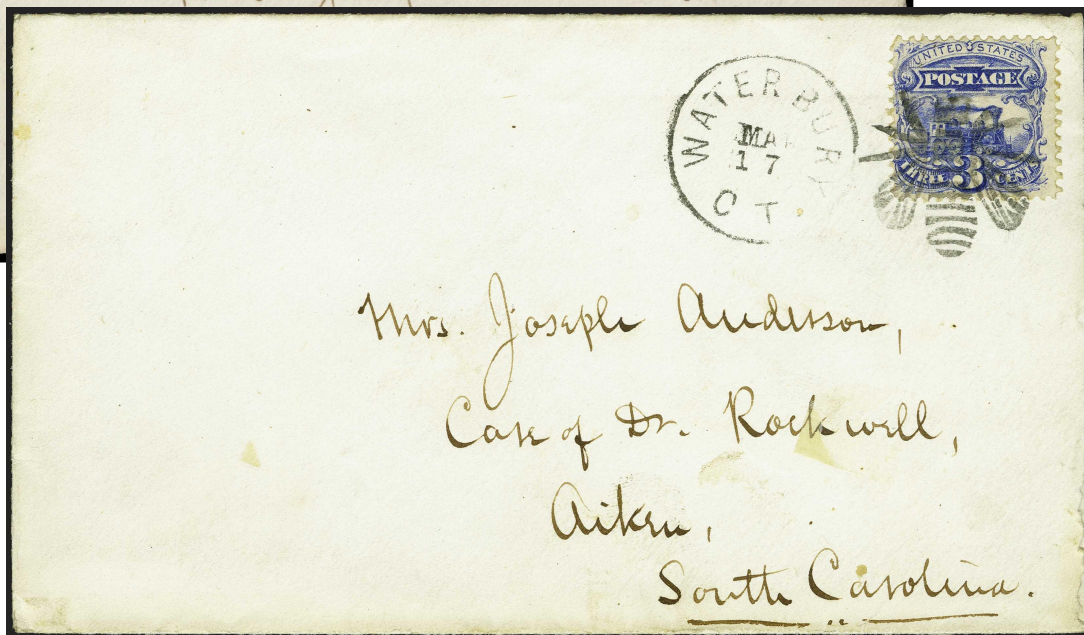
PA-I 33 [Rohloff A-13]
Waterbury, CT 3/12/1869-3/31/1870



PA-I 33



PA-I 33



PA-I 33

Pictorial - Insects



"small bee"



PA-I 34 [Rohloff A-14]
Waterbury, CT □ 2/2/1870-3/18/1870



PA-I 34



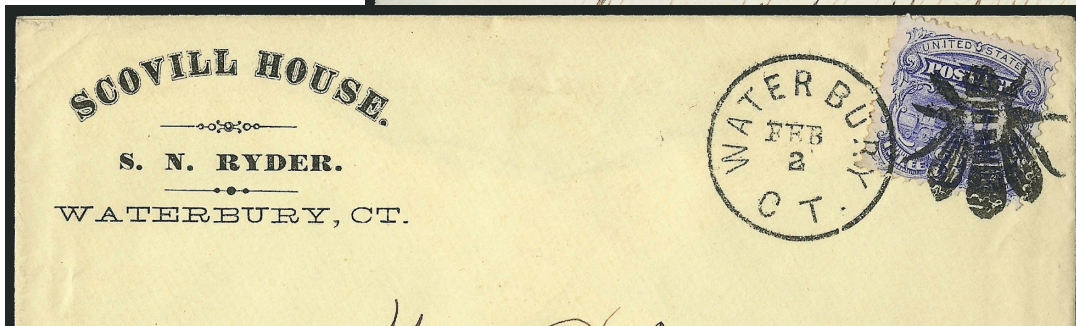
PA-I 34



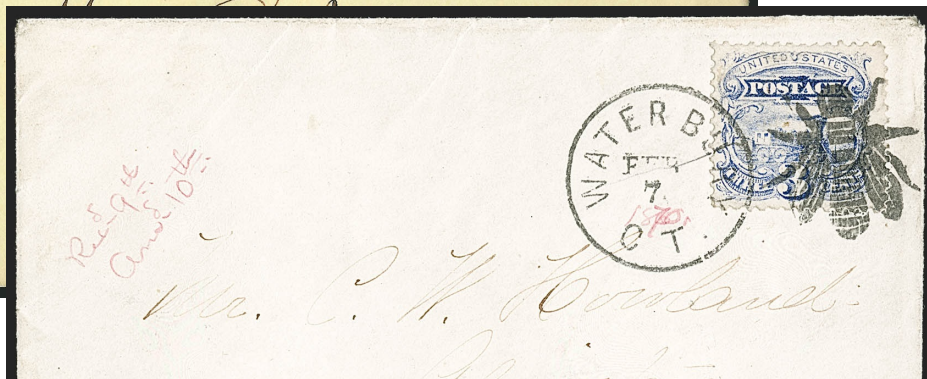
PA-I 34



PAI 34



PAI 34



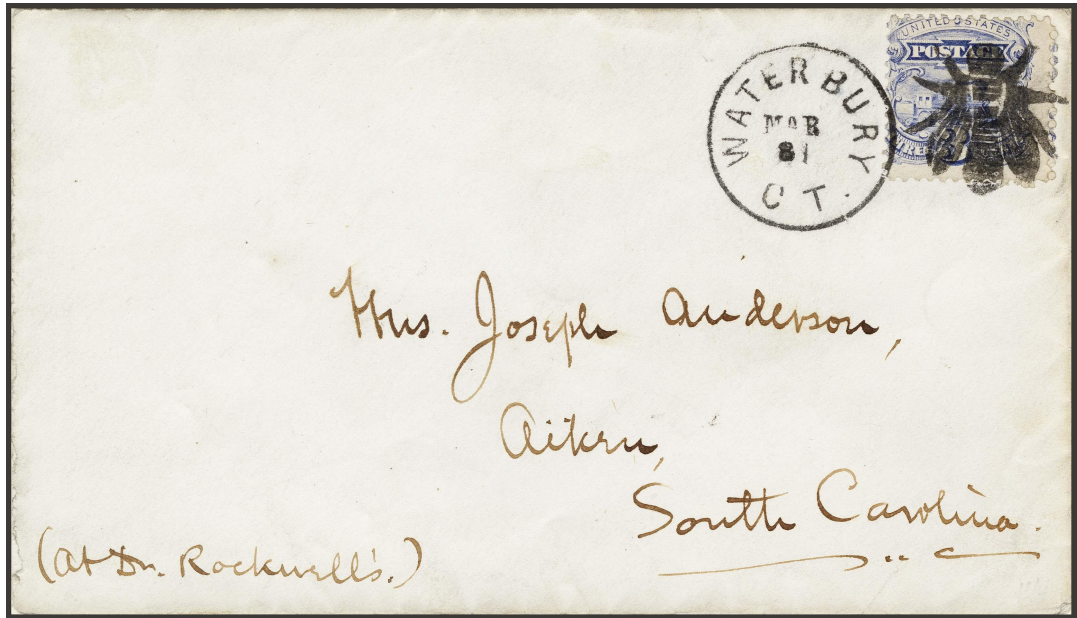
PAI 34



PAI 34



PAI 34



PA-I 34



PA-I 34



PA-I 35
1869



PA-I 35A [USCC 500]
Waterbury, CT 1869



PA-I 36
Meriden, CT 1869

Pictorial - Insects



PA-I 37 blue, black [USCC 501]
Adrian, MI blue 5/13/1869-5/27/1869 & Canastota, NY black 4/9/1869-4/27/1869



PA-I 37

PA-I 37

PA-I 37

Pictorial - Insects



PA-I 37A
Hartford, CT(?) 1869

Pictorial - Insects



worn strike



PA-I 38
Canastota, NY 4/4/1869-4/21/1869



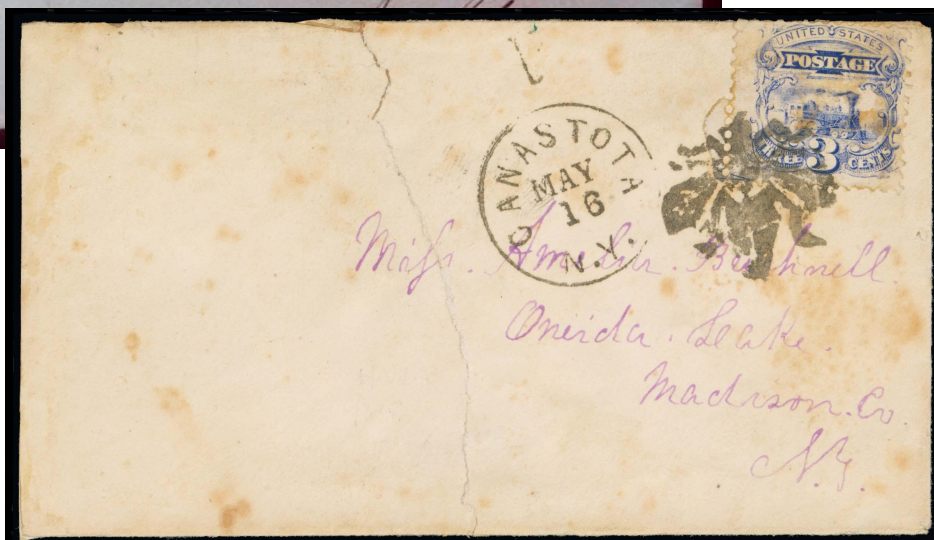
PA-I 40 [USCC 508]
Canastota, NY 1869



PA-I 38






PA-I 38



PA-I 38

Pictorial - Insects

 <p>PA-I 41 1869</p>	 <p>PA-I 43 1861</p>	 <p>PA-I 44 [USCC 521] 1869</p> <p>odd bug?</p>		
---	---	--	--	--

Not yet identified

 <p>PA-Ix 1869</p>	 <p>PA-Ix 1869</p>	 <p>PA-Ix 1869</p>	 <p>PA-Ix 1869</p>	 <p>PA-Ix 1869</p>
 <p>PA-Ix 1869</p>	 <p>PA-Ix 1861</p>	 <p>fake</p>		



updated June 15, 2022 (9:15am)