

Pictorial Objects - Anchors



PO-An 1 [USCC 675]
Boston, MA 1861-69



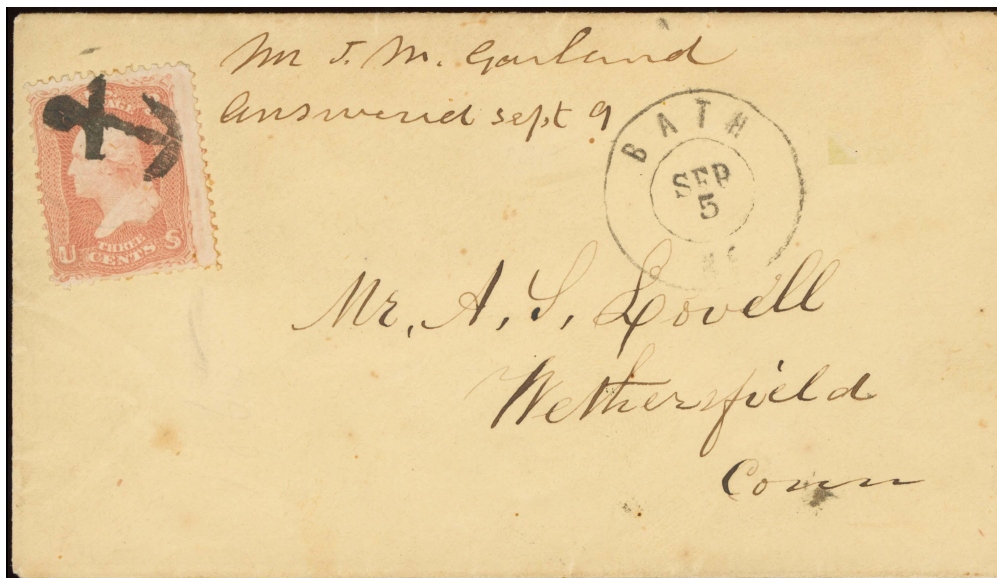
smaller type
PO-An 2 [USCC 674]
Boston, MA 1861



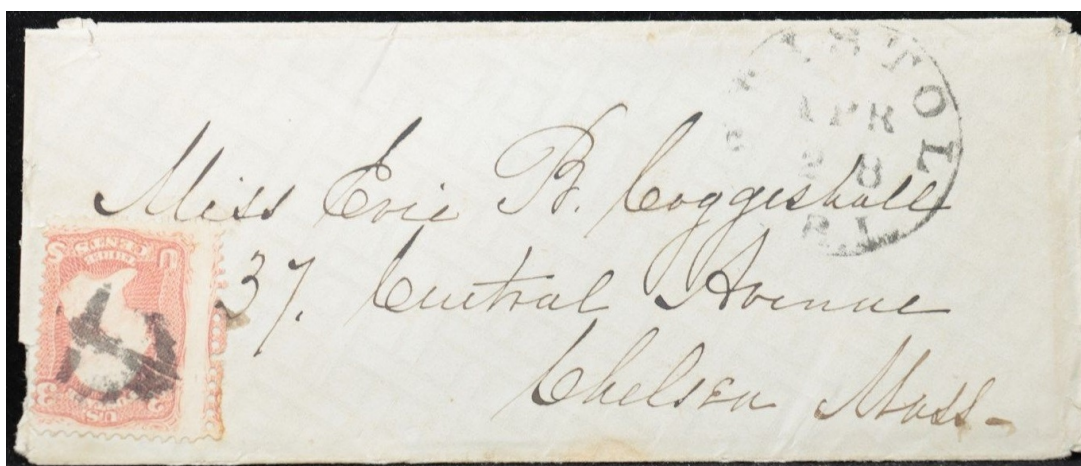
PO-An 3
Bath, ME 1861



PO-An 4 red
1861-66



worn device
PO-An 5
Bristol, RI 1861-67



Pictorial Objects - Anchors



PO-An 7 [USCC 669]
Newark, NJ 1861



PO-An 7A [USCC 670]
1861



PO-An 8
East Northwood, NH 1861-67



PO-An 7



PO-An 8



worn device

PO-An 9 [USCC 710]
Boston, MA 1861



PO-An 10 [USCC 684]
Nashua, NH 1861

Pictorial Objects - Anchors



PO-An 9



PO-An 9



PO-An 11 blue [USCC 706]
Pompey, NY 1861

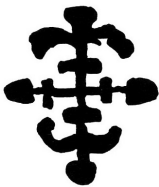


stylized "anchor"
PO-An 12 [USCC 711]
1861



PO-An 13 blue
Chicago, IL 1861-67

Pictorial Objects - Anchors



worn device



PO-An 14 [USCC 693]
Putnam, CT □ 1861



PO-An 14



PO-An 14



PO-An 14



PO-An 14



PO-An 14



PO-An 14



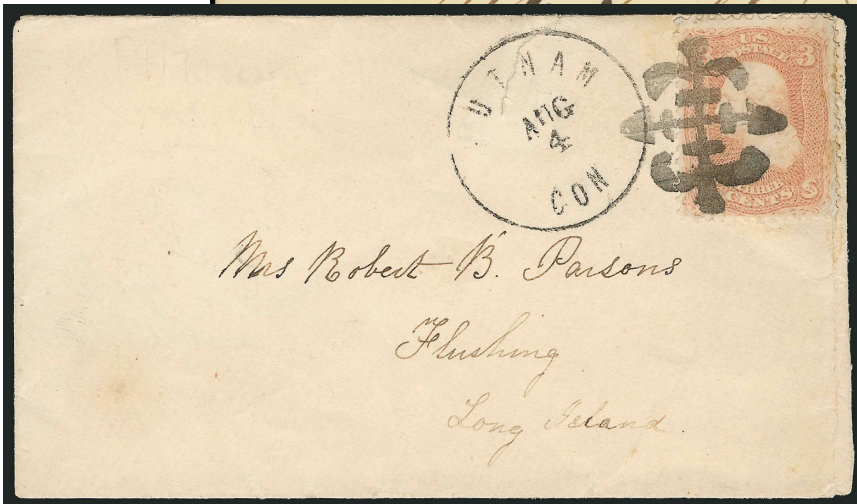
PO-An 14



PO-An 14

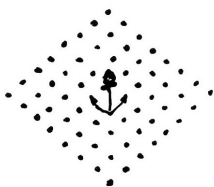


PO-An 14



PO-An 14

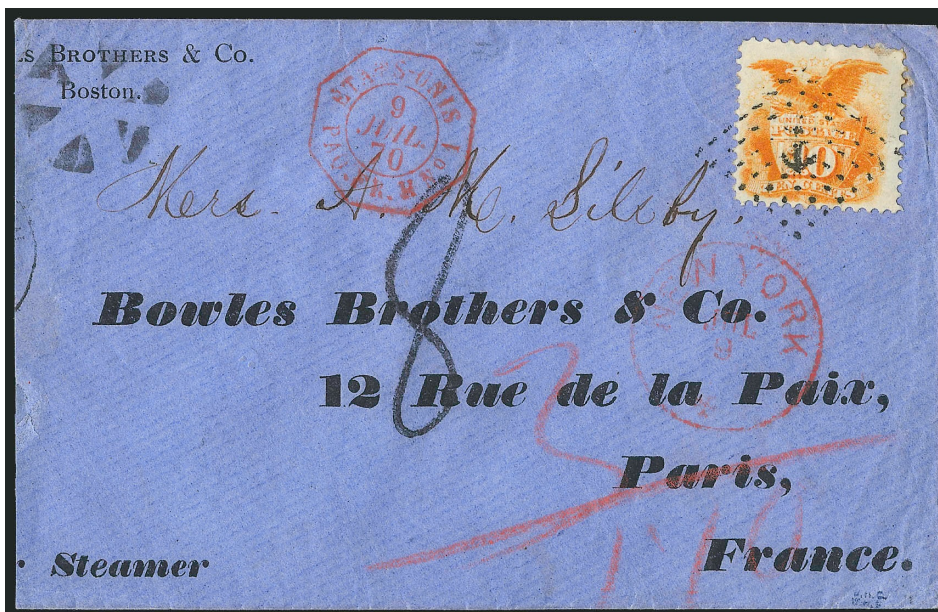
Pictorial Objects - Anchors



French ship marking



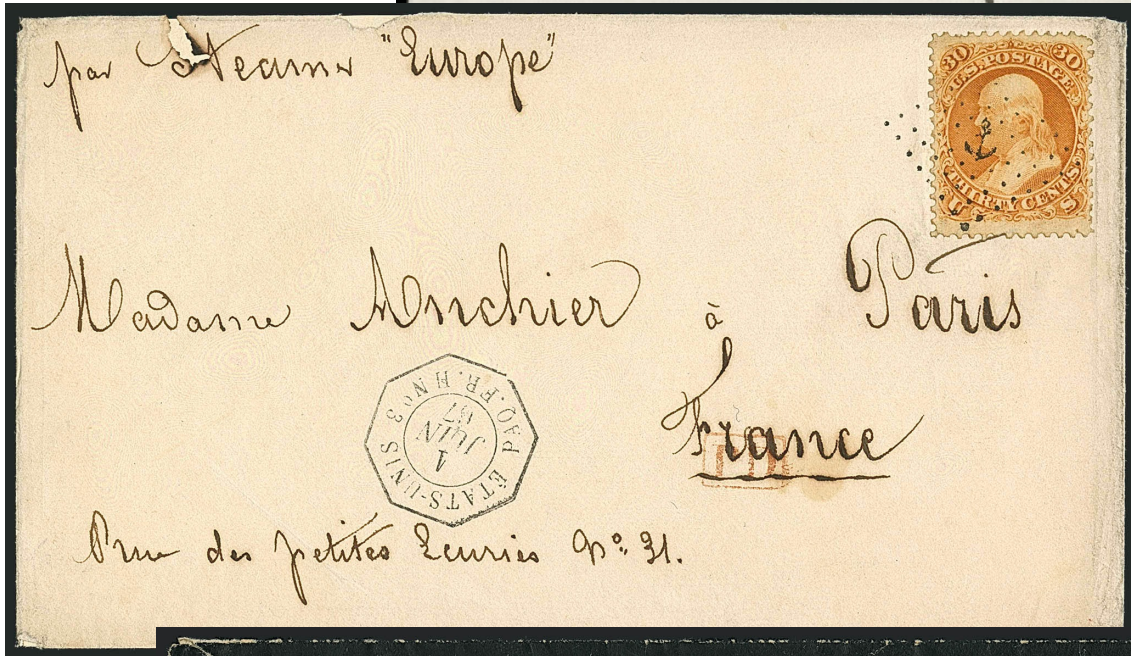
PO-An 16 [USCC 692]
 4/26/1865-7/9/1870



PO-An 16



PO-An 16



PO-An 16



PO-An 16



PO=An 16

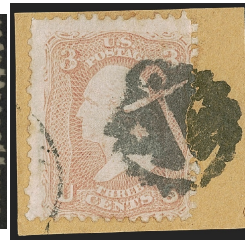
Pictorial Objects - Anchors



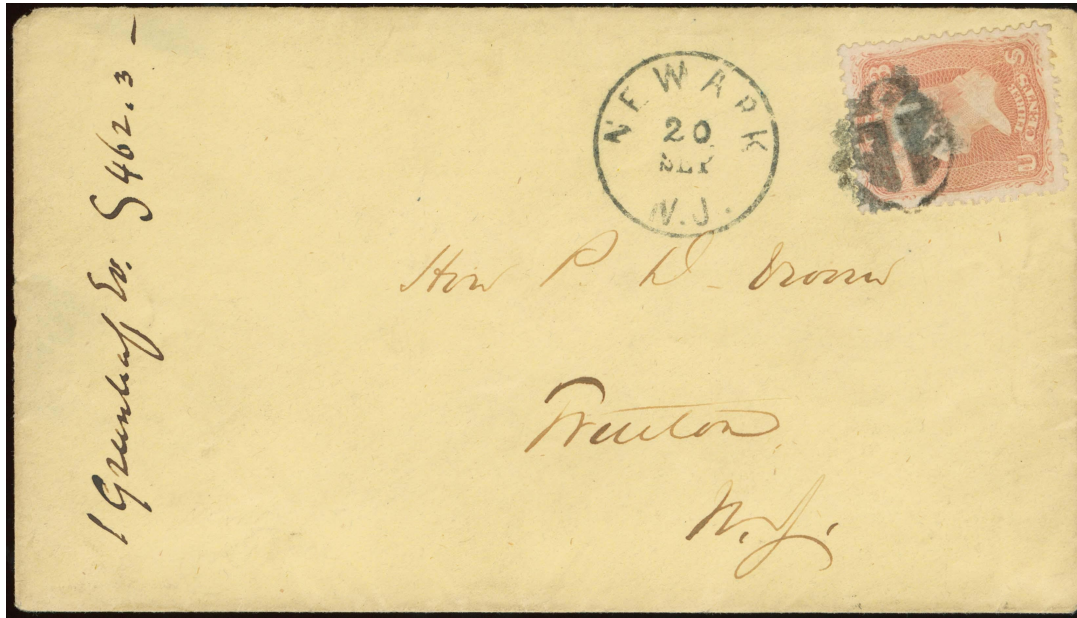
worn device



worn device



PO-An 17 [USCC 738]
Newark, NJ □ 1861



PO-An 17



PO-An 17B black, red [Cole NYFM-68; Weiss RE-4]
New York, NY 1869



PO-An 19
1867



PO-An 20
1869

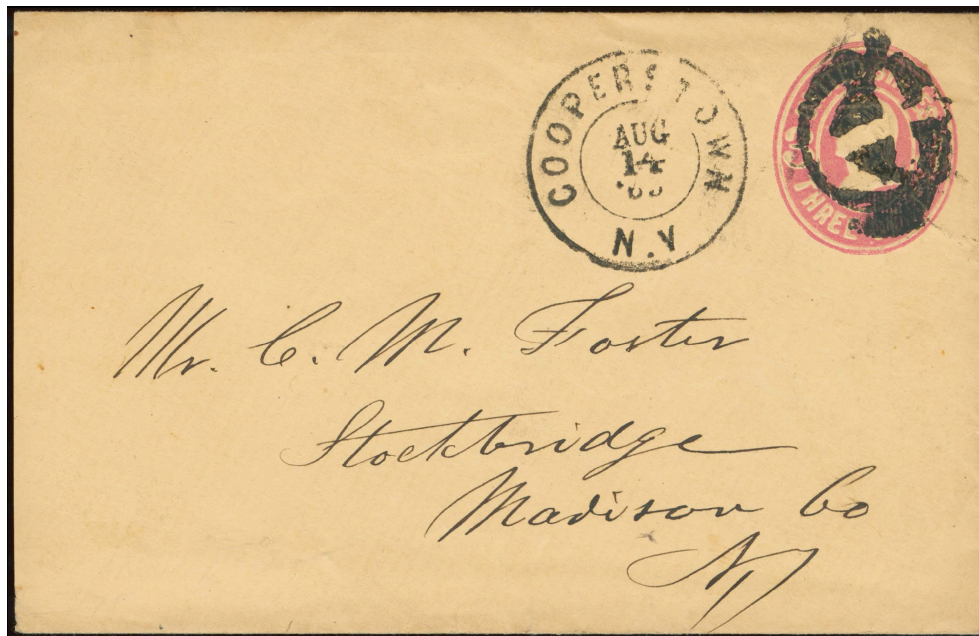


PO-An 21 [USCC 725]
Cooperstown, NY □ 7/5/1865-8/14/1865

Pictorial Objects - Anchors



PO-An 21



PO-An 21



worn device?

PO-An 22
Bristol, RI 1861



PO-An 22A
Wilmington, VT 10/1/1869



PO-An 24
Bristol, CT(?) 1861



PO-An 24A
1861

Pictorial Objects - Anchors



PO-An 22A



PO-An 25
Albany, NY 1861



PO-An 26
1861



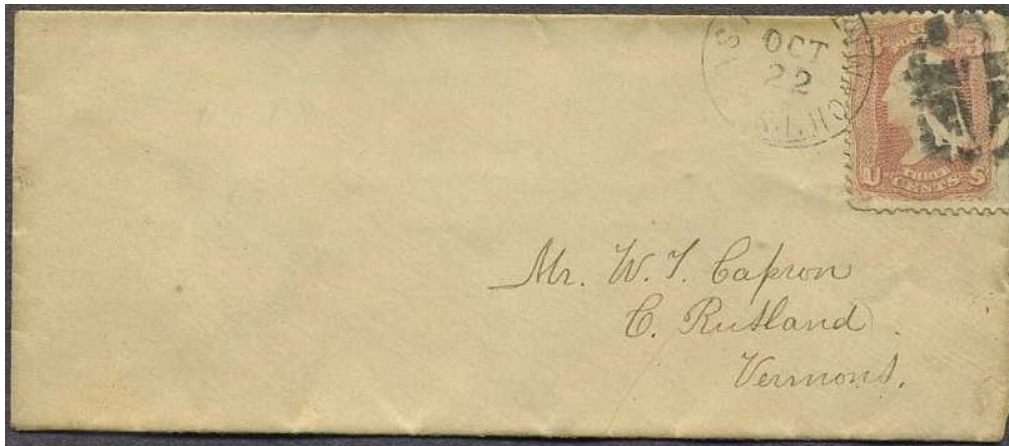
PO-An 27
East Greenwich, RI 1861



Masonic
PO-An 28
New Gloster, ME 1861-66



PO-An 28A [USCC 717]
1861



PO-An 27



PO-An 29 [USCC 724]
Bristol, RI 1861



PO-An 29a [USCC 731]
Bristol, RI 1861



PO-An 30
1869

Pictorial Objects - Anchors



PO-An 31
1869



PO-An 31A
1869



PO-An 32
Whitehall, NY 1869



"Fouled Anchor"



worn device



PO-An 33 [USCC 697]
Fayville, MA □ 7/8/1868-8/5/1868



PO-An 33



PO-An 33

Pictorial Objects - Anchors



PO-An 33A
1869



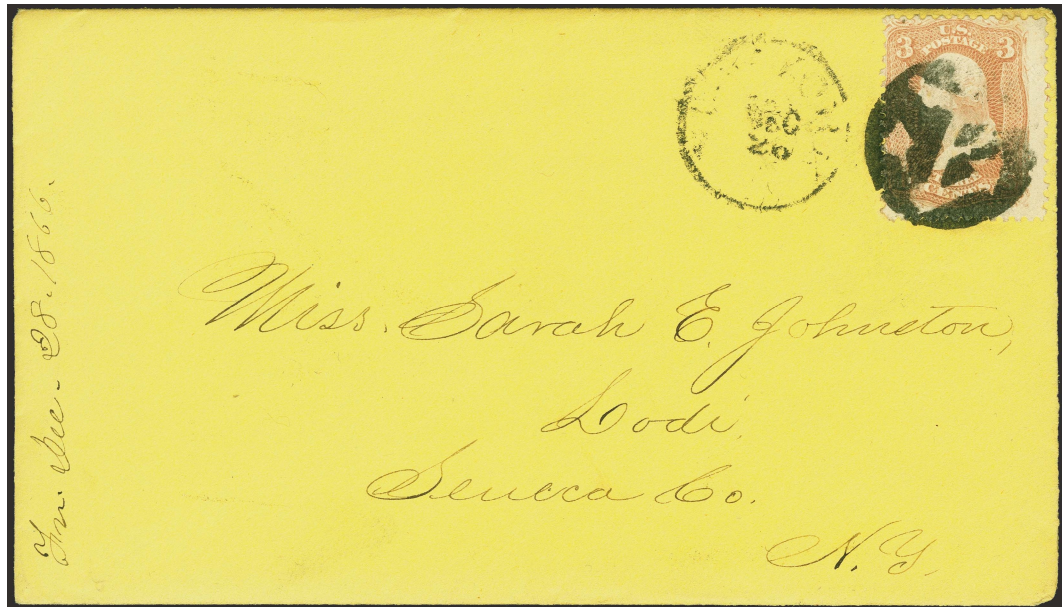
PO-An 33B
1861



PO-An 33C
1867

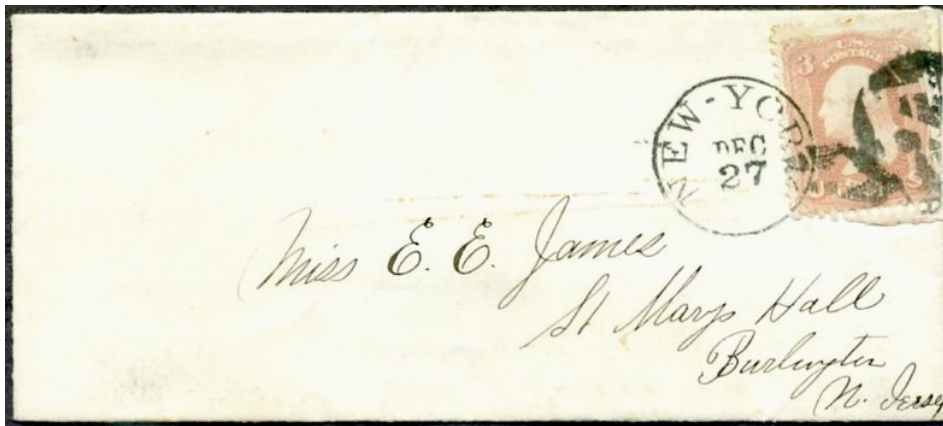


PO-An 35 [USCC 737]
New York, NY 12/26/1866




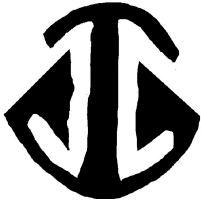


Ms. Rec. 28.1866.

PO-An 35



PO-An 35

Pictorial Objects - Anchors

 <p>genuine?</p> <p>PO-An 36 [USCC 696] 1857</p>	 <p>PO-An 36A New York, NY <input type="checkbox"/> 1864</p>	  <p>PO-An 37 1857</p>	
--	--	--	--



PO-An 36A

 <p>Masonic</p> <p>PO-An 38 1861-66</p>	  <p>PO-An 39 red, blue [USCC 701] Newark, NJ <input type="checkbox"/> 1867-69</p>	 <p>PO-An 39a black Newark(?), NJ <input type="checkbox"/> 1869</p>	 <p>PO-An 40 Gonic, NH <input type="checkbox"/> 1861</p>
---	---	---	--

Pictorial Objects - Anchors



PO-An 40



PO-An 41 [USCC 694]
1861



PO-An 42 [USCC 695]
Chelsea, MA 1861



Genuine?



Genuine?



updated April 24, 2023 (9:48am)