

Flowers

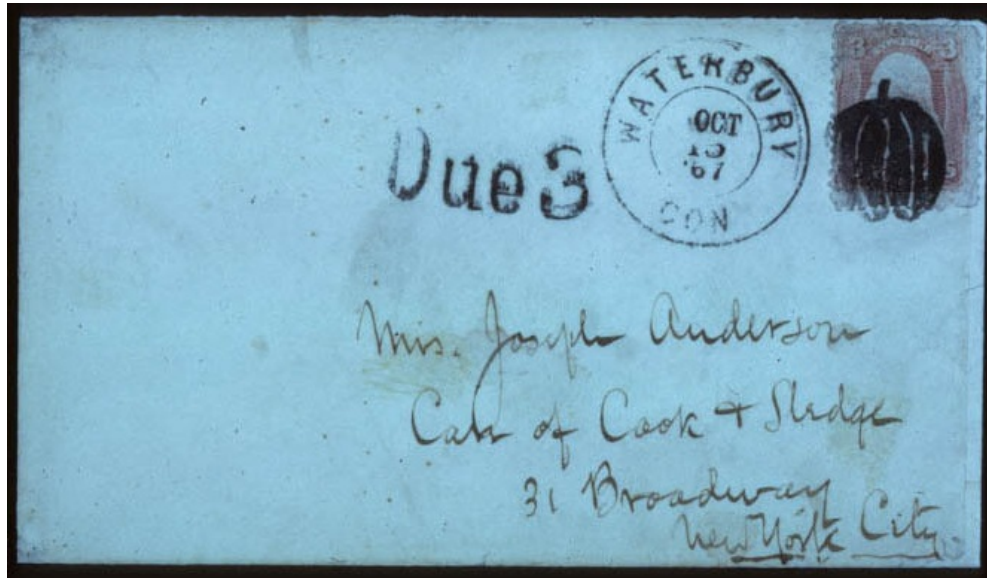


"tulip"

PP-FI 1 [Rohloff F-4]  
Waterbury, CT 11/15/1867



PP-FI 1



PP-FI 1

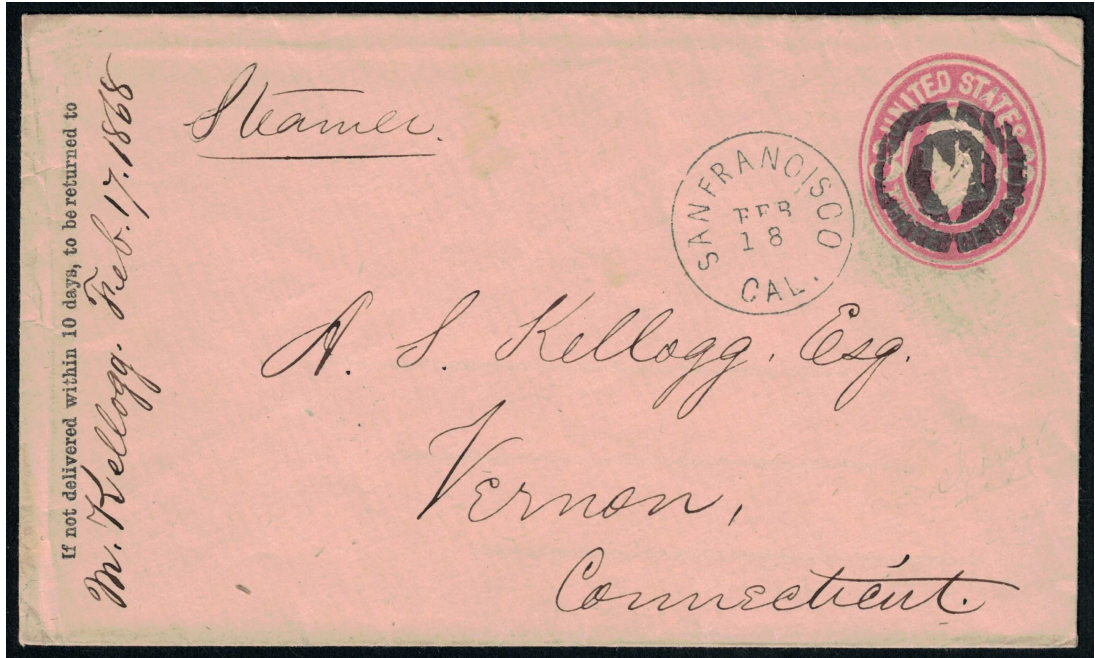
Flowers



"tulip"



PP-F12  
San Francisco, CA 2/18/1868



PP-F12



PP-F12 & ST-4P2F

Flowers



"rose"



PP-FI 3 [USCC 1491]  
Amherst, MA 7/23/1863-6/15/1866



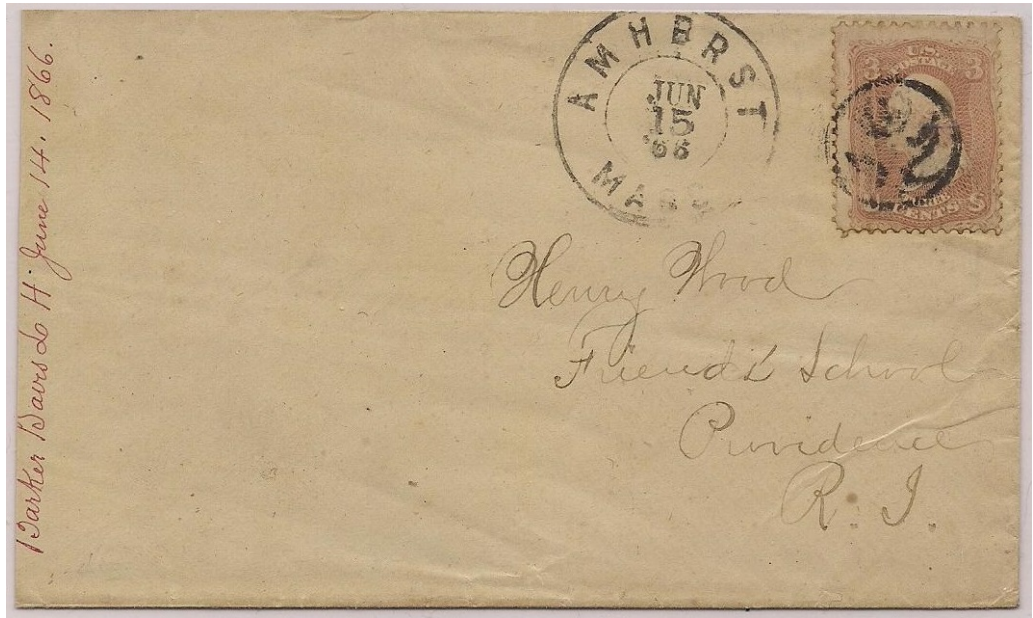
PP-FI 3



PP-FI 3



PP-FI 3



PP-F13



PP-F13

Flowers



PP-FI 3A [USCC 1490]  
Amherst, MA 8/10/1863



"thistle"



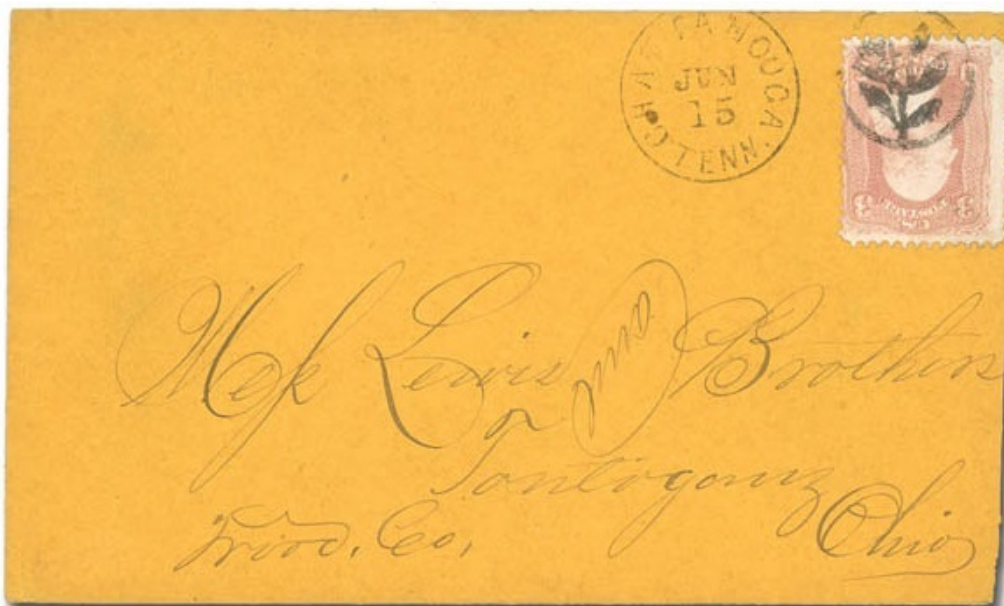
PP-FI 4  
Amherst, MA 1861



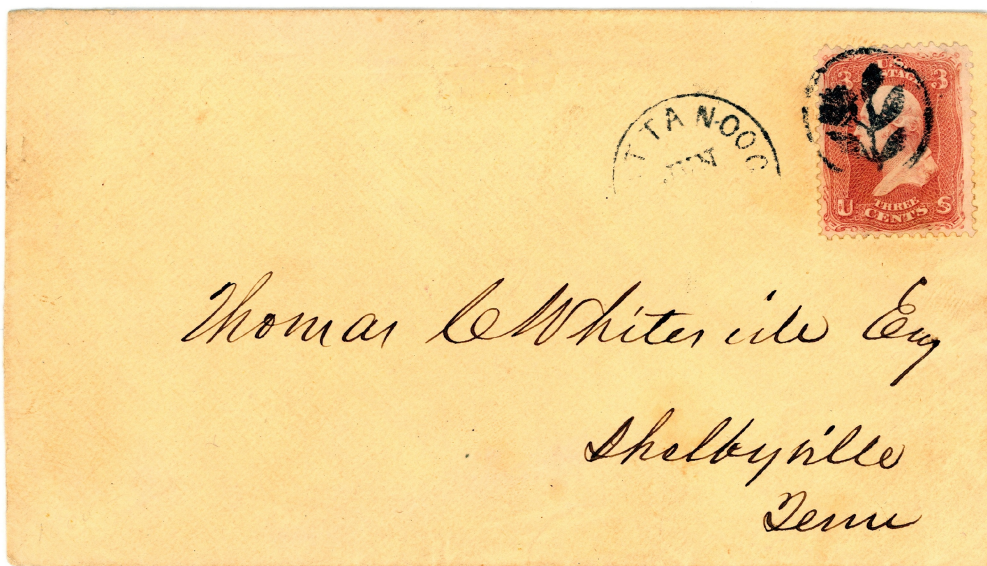
PP-FI 5  
Chattanooga, TN □ 1861



PP-FI 6  
1869



PP-FI 5



PP-FI 5

Flowers



PP-FI 7  
1845



"flowers"

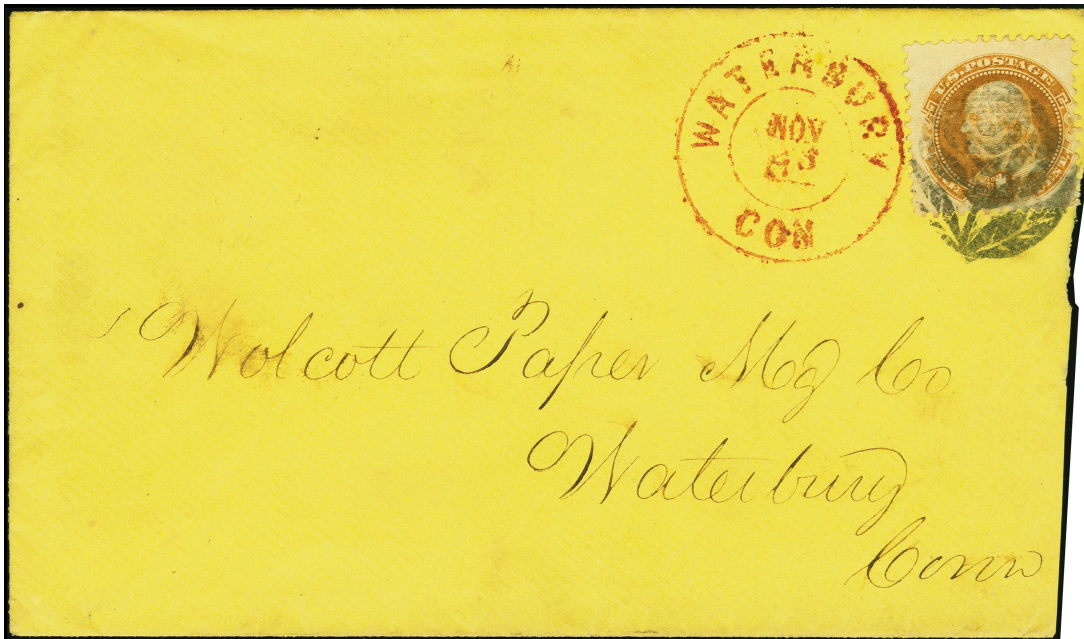
PP-FI 8  
San Francisco, CA 1861



"rose"



PP-FI 9 [USCC 1497; Rohloff F-2]  
Waterbury, CT 11/23/1869-12/10/1869



PP-FI 9

Flowers



"stemmed rose"

PP-FI 10 [Rohloff F-1]  
Waterbury, CT 1869



"rosebud"

PP-FI 11  
White Lake, NY 1861



PP-FI 12  
1861



Chrysanthemum"



PP-FI 13 [USCC 1084; Rohloff F-3]  
Waterbury, CT 1/21/1870



PP-FI 14  
1869

Flowers



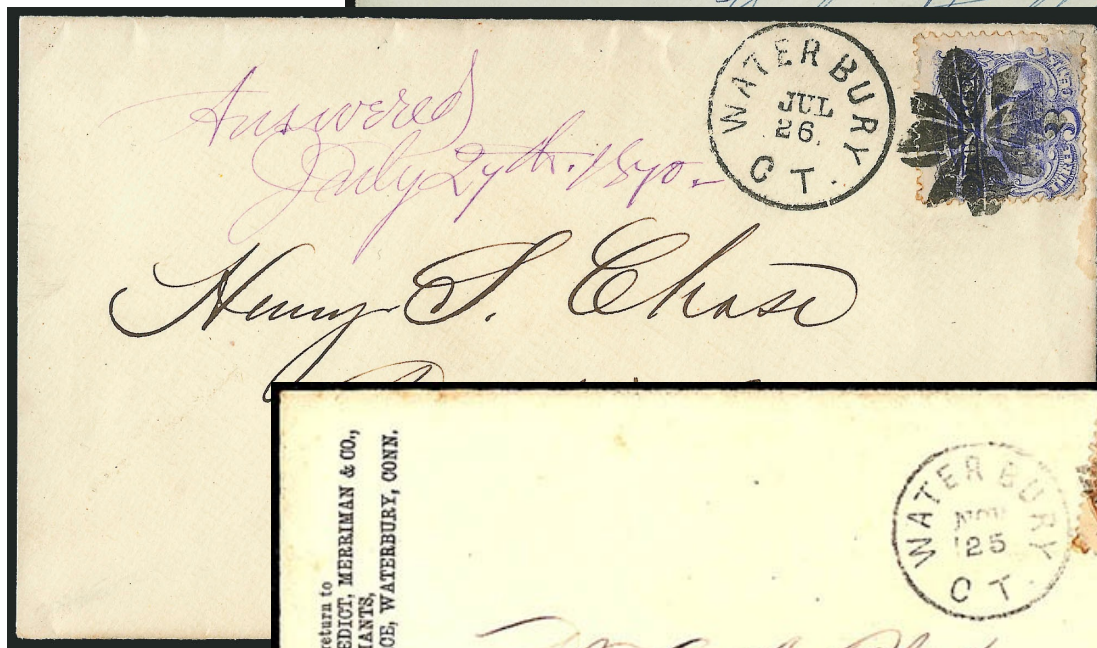
"holly sprig"



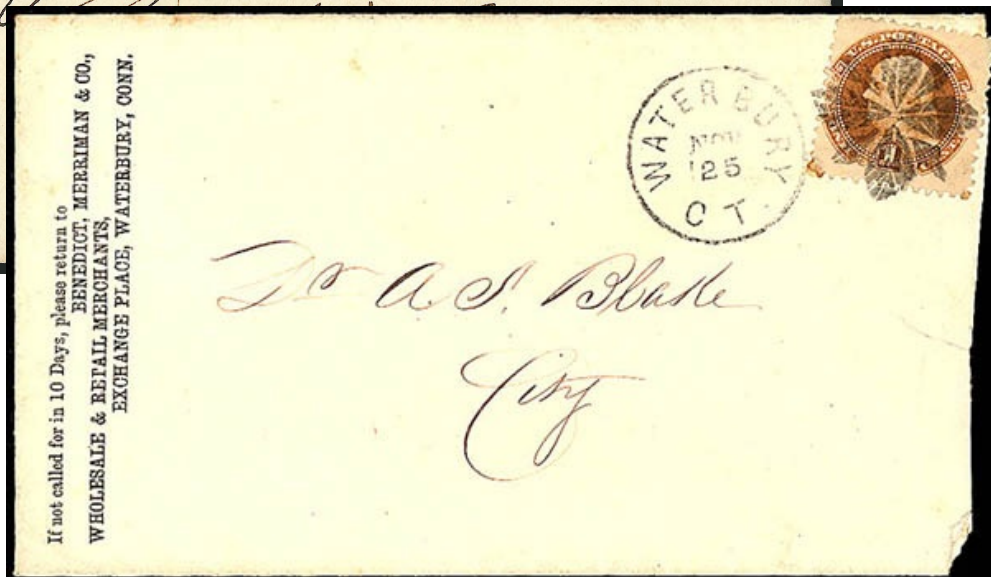
PP-FI 15 [Rohloff L-4; USCC 1761]  
Waterbury, CT 11/25/1869-7/26/1870



PP-FI 15



PP-FI 15



PP-FI 15





PP-FI 15



PP-FI 15



PP-FI 15



PP-FI 16  
Horicon, WI 1861



PP-FI 17  
Hartford, CT 1861

Flowers



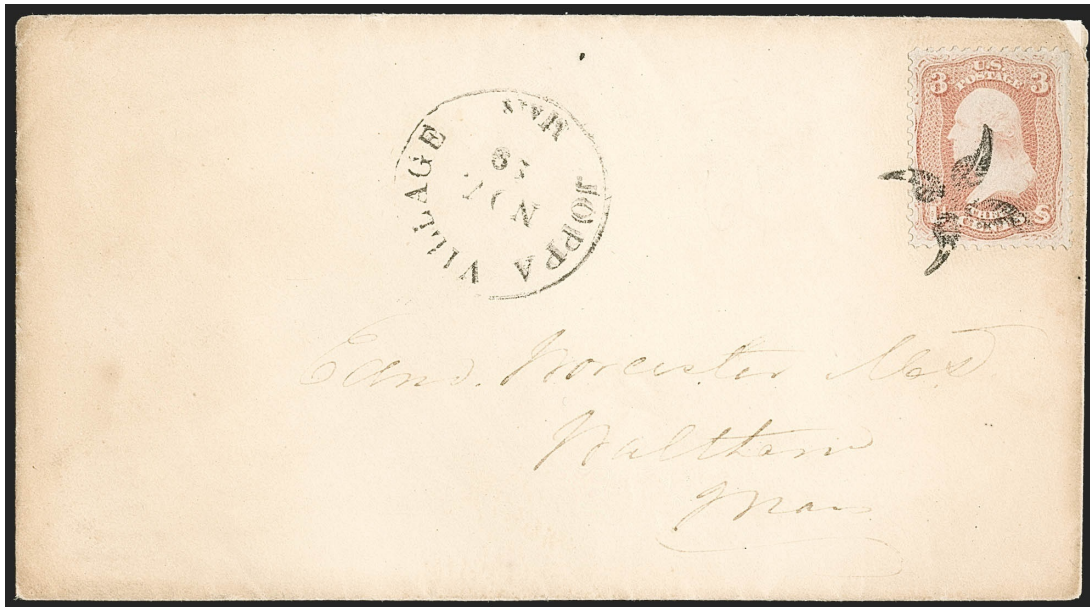
PP-FI 18  
Spartanburgh Courthouse, SC 1869



PP-FI 19 [USCC 1763]  
Joppa Village, MA 1861



PP-FI 19



PP-FI 19

# Flowers



PP-FI 20 [USCC1762]  
Joppa Village, MA 1861



PP-FI 20A  
[Simpson pg137-122]  
Joppa Village, MA



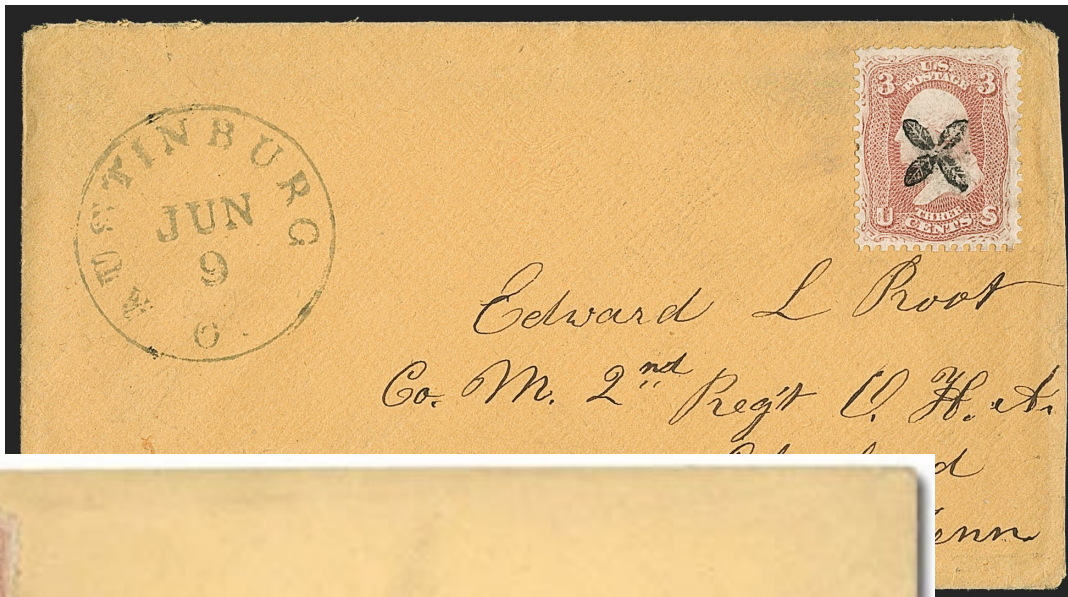
PP-FI 21  
Austinburg, OH  1861



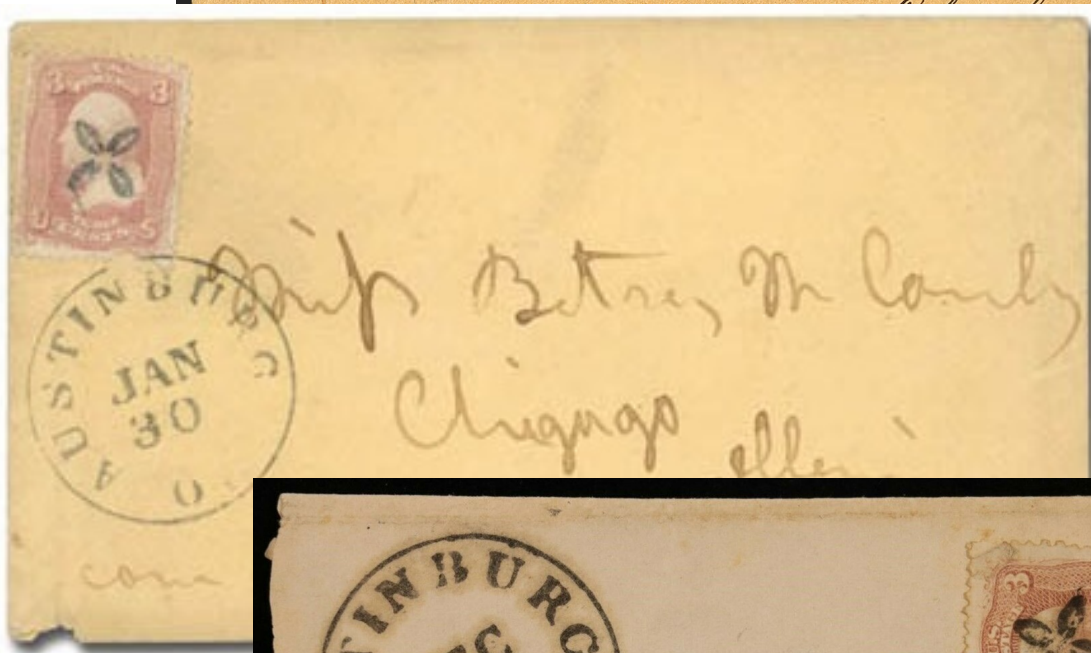
PP-FI 22  
Dartford, WI  1861



PP-FI 23 [USCC 3250]  
Ridgefield, CT 1861



PP-FI21



PP-FI21



PP-FI21



PP-FI 24  
Lansing, MI 1861-69




PP-FI 25  
1869

Flowers



compare with GE-R 39

PP-F1 26

Waterbury(?), CT  1861

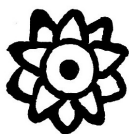


PP-F1 26

Flowers



"Daisy"



"Daisy"



PP-FI 27 [USCC 3183]  
Cornwall, VT 1861



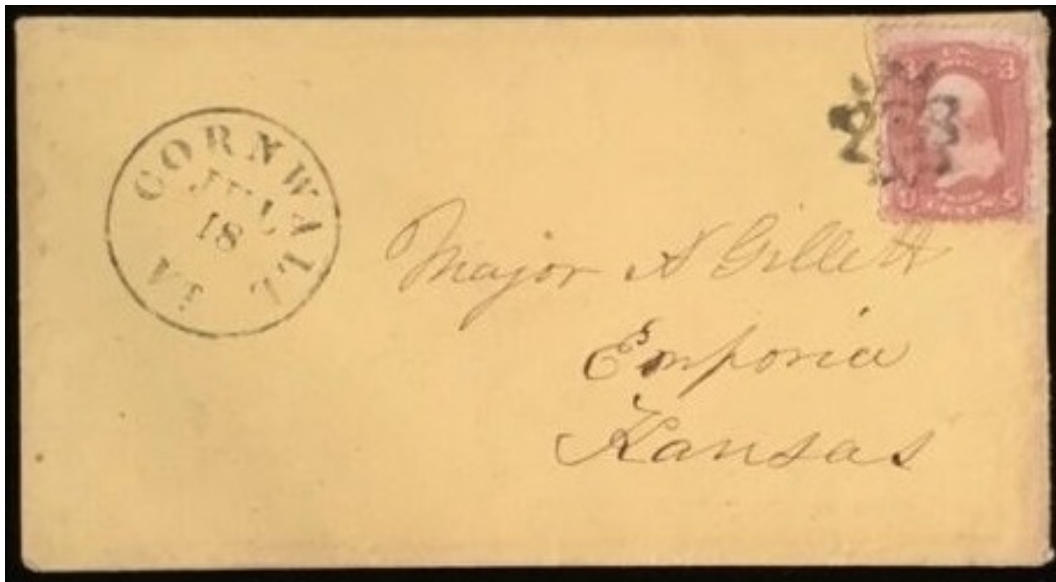
PP-FI27



PP-FI27



PP-FI27



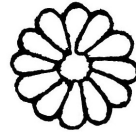
PP-FI 27



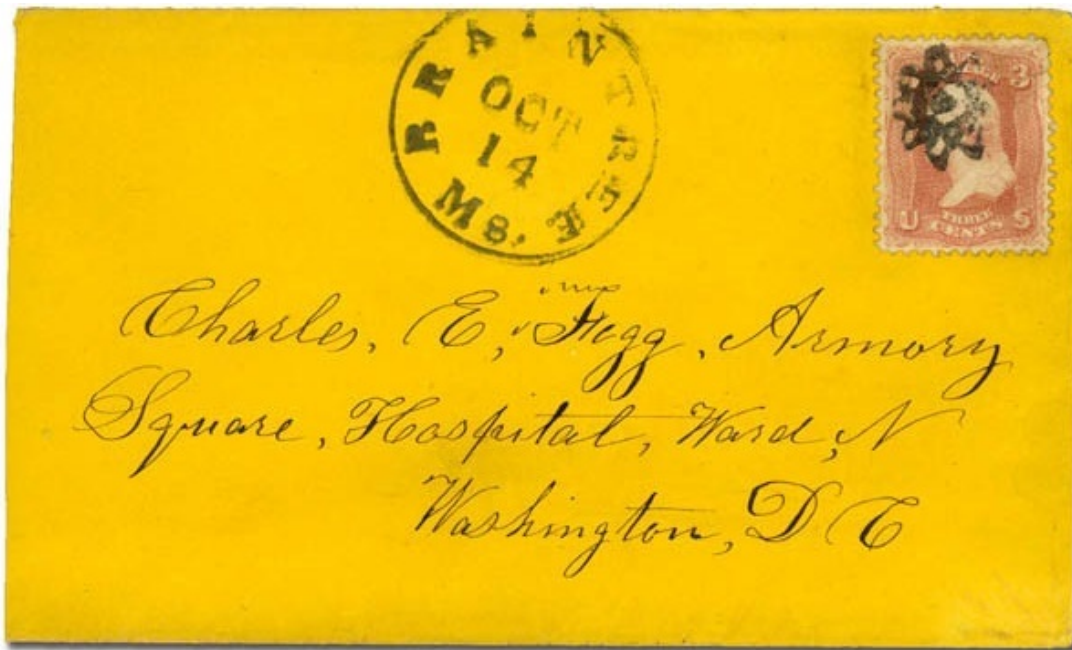
PP-FI 27B  
Braintree, MA 1861



PP-FI 27C [USCC 1492]  
Cornwall, VT 1861



PP-FI 28 [USCC 3610]  
1861-67



PP-FI 27B

Flowers



PP-FI 29  
Martinville, IL 1869



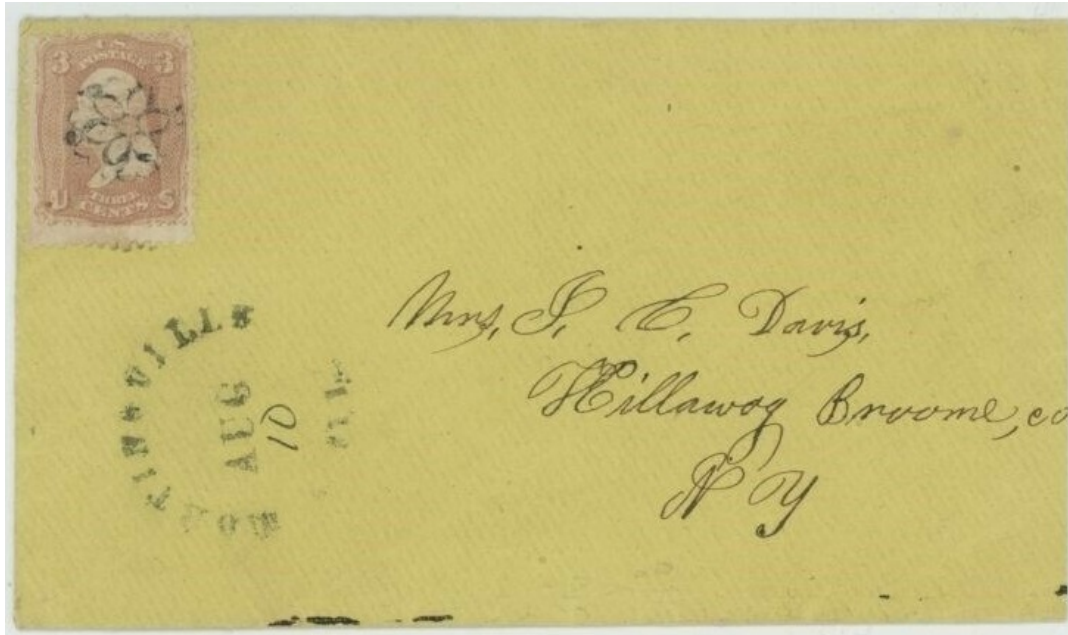
PP-FI 29A  
Sangerfield, NY 1861



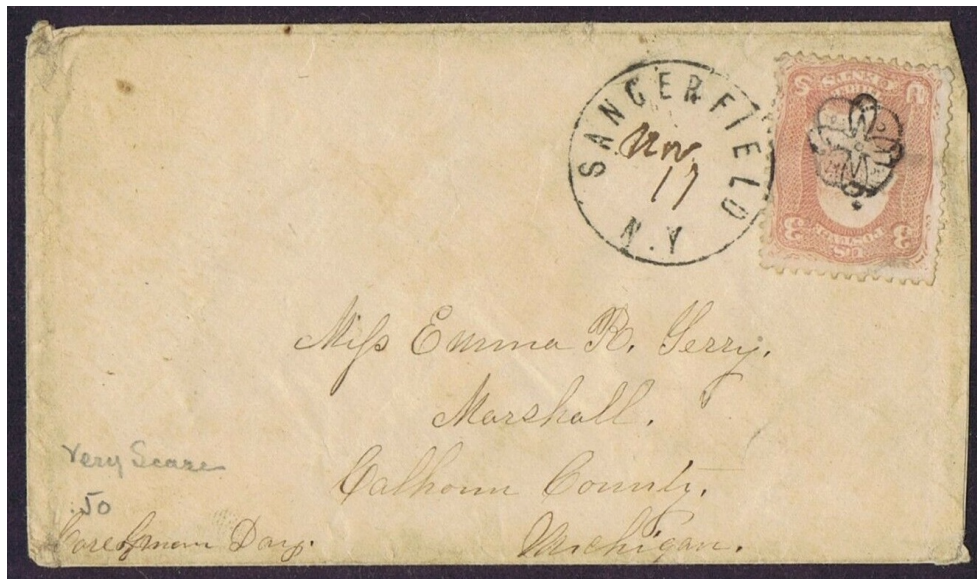
PP-FI 30  
1869



PP-FI 31  
Spartanburgh Courthouse, SC 1863-1869



PP-FI 29



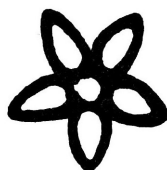
PP-FI 29A



PP-FI 32  
Lansing, MI 1861



PP-FI 33  
1869



PP-FI 34 [USCC 3037]  
Prairie Lee, TX 1869



PP-FI 34A  
1861





Flowers

 <p><b>PP-FI 35</b> Troy, NY 1861</p>	 <p><b>PP-FI 36</b> New York, NY 1861</p>	  <p>"plant" or "candle flame"</p> <p><b>PP-FI 37 [USCC 759]</b> Kennebunkport, ME 1861-1867</p>	 <p>worn(?)</p> <p><b>PP-FI 38</b> Kennebunkport, ME 1861-64</p>	
 <p><b>PP-FI 39</b> New York, NY 1/12/1869</p>	 <p><b>PP-FI 40 [USCC 3505]</b> 1869</p>	 <p><b>PP-FI 41</b> 1861</p>	 <p><b>PP-FI 42 [USCC 1495]</b> 1861</p>	 <p><b>PP-FI 43 blue [USCC 1501]</b> Grass Valley, CA 1861</p>



PP-FI 39

 <p><b>PP-FI 44 [USCC 1502]</b> Waterbury, CT 1869</p>	 <p><b>PP-FI 45</b> 1869</p>			
---	---	--	--	--

# Flowers



updated June 28, 2022 (11:15am)