

Fruit



"Apple"

PP-Fr 1 [USCC 1888]
Waterbury, CT 1867



"Apple"

PP-Fr 2
Waterbury, CT 1869



"Apple"

PP-Fr 3 [USCC 1889]
Murfreesboro, TN 1869



similar to PO-Tr 7



PP-Fr 4
1869



"Apple"

PP-Fr 5
Concord, NH 1869



"Apple"

PP-Fr 6
1869



"Apple"



PP-Fr 7
Appleton, WI 1869



"Cherry"

PP-Fr 8 blue
1869



"Pumpkin"

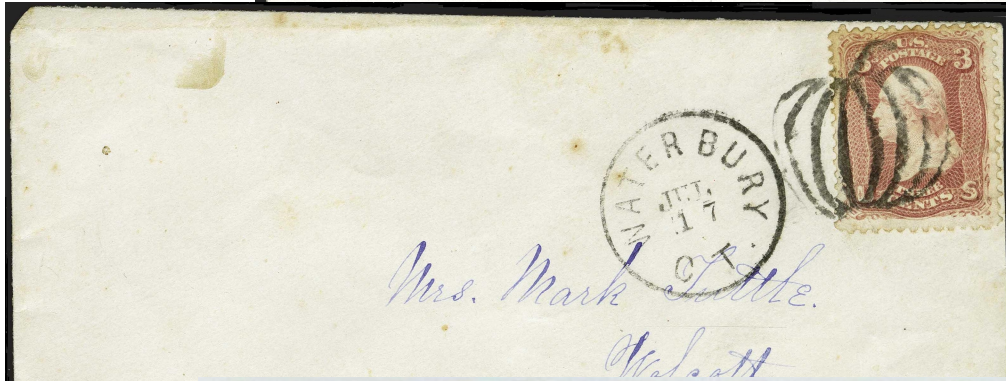


PP-Fr 9 [Rohloff G-2; USCC 1887]
Waterbury, CT 9/9/1868-7/24/1869



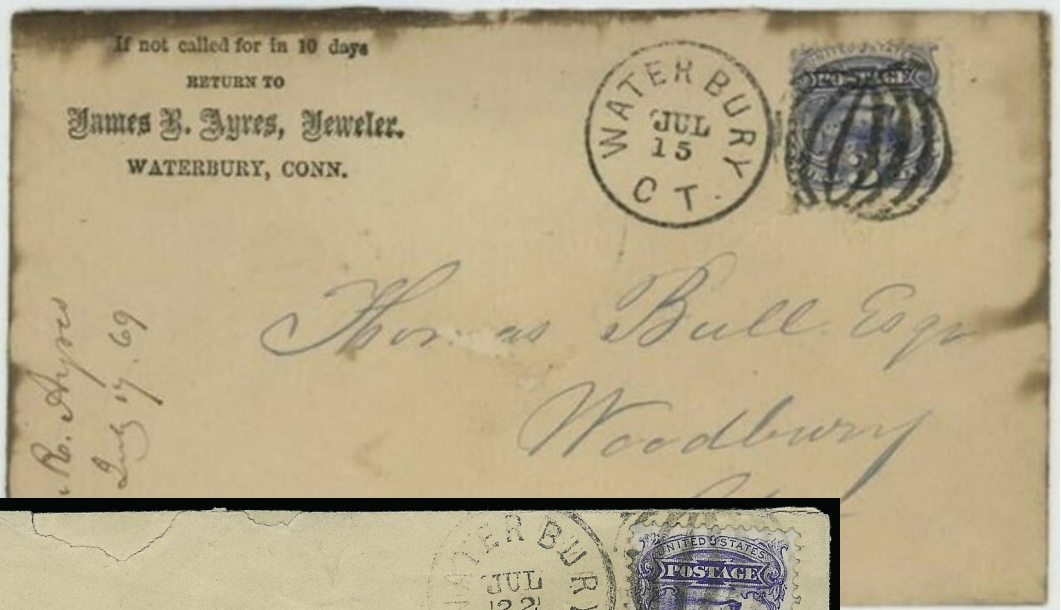
Rev. Joseph Anderson

PP-Fr9



Mrs. Mark Little.
Walsatt

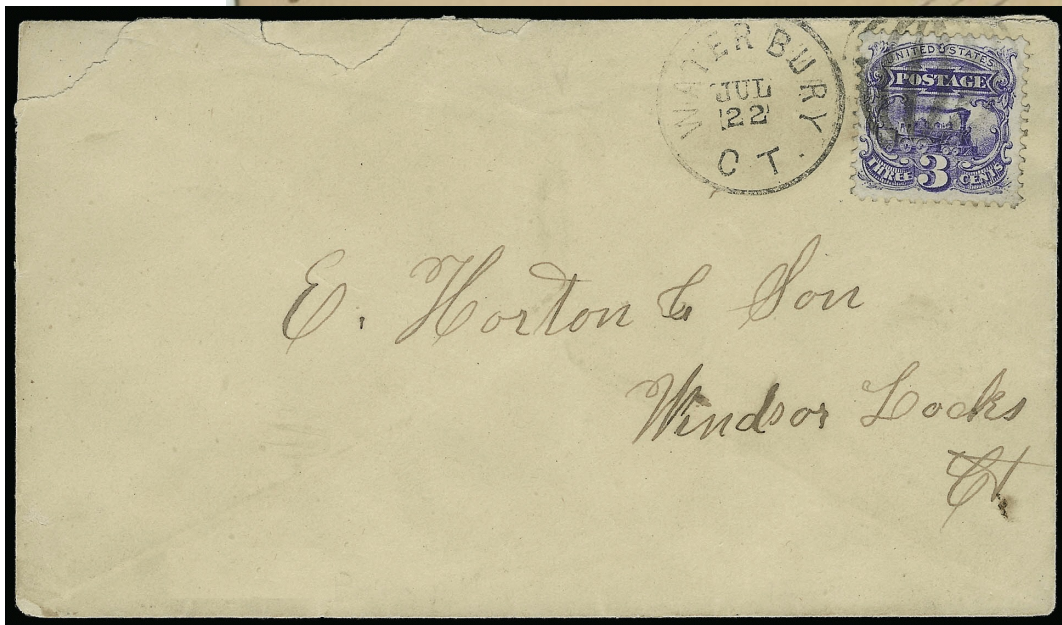
PP-Fr9



Re. Tyres
Aug 17. 69

Thomas Bull Esq
Woodbury

PP-Fr9



E. Horton & Son
Windsor Locks
Et

PP-Fr9



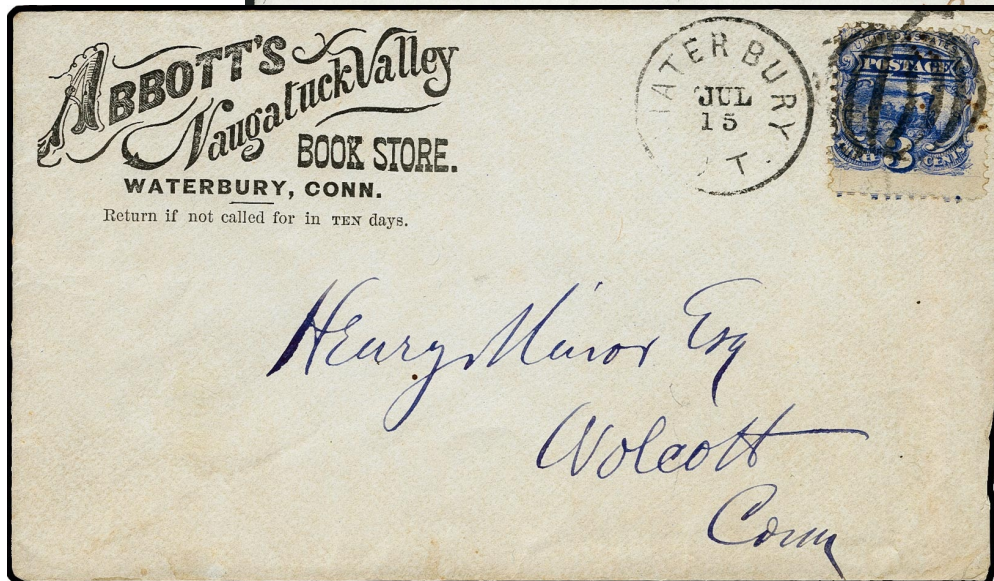
PP-Fr 9



PP-Fr 9



PP-Fr 9



PP-Fr 9

Fruit



"Pumpkin" or "Melon"

PP-Fr 10 blue
Ottawa, IL 1 5/2/1862



"Pear"

PP-Fr 11
Waterbury, CT 1 10/14/1867



PP-Fr 10



PP-Fr 11

