



Leaves

3 veins on left - 3 veins on right

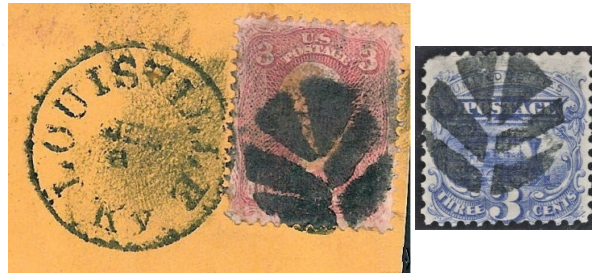
				
PP-L 21 Columbus, MS <input type="checkbox"/> 1864	PP-L 22 blue Frankfort, KY <input type="checkbox"/> 1869	PP-L 23 Louisville, KY <input type="checkbox"/> 1869	PP-L 23A [USCC 1595] Lebanon, KY 1861	PP-L 23B [USCC 1610] Ware, MA 1861



Leaves



PP-L 24
Louisville, KY 1869



PP-L 24A
Louisville, KY 6/18/1869



PP-L 24



PP-L 24A

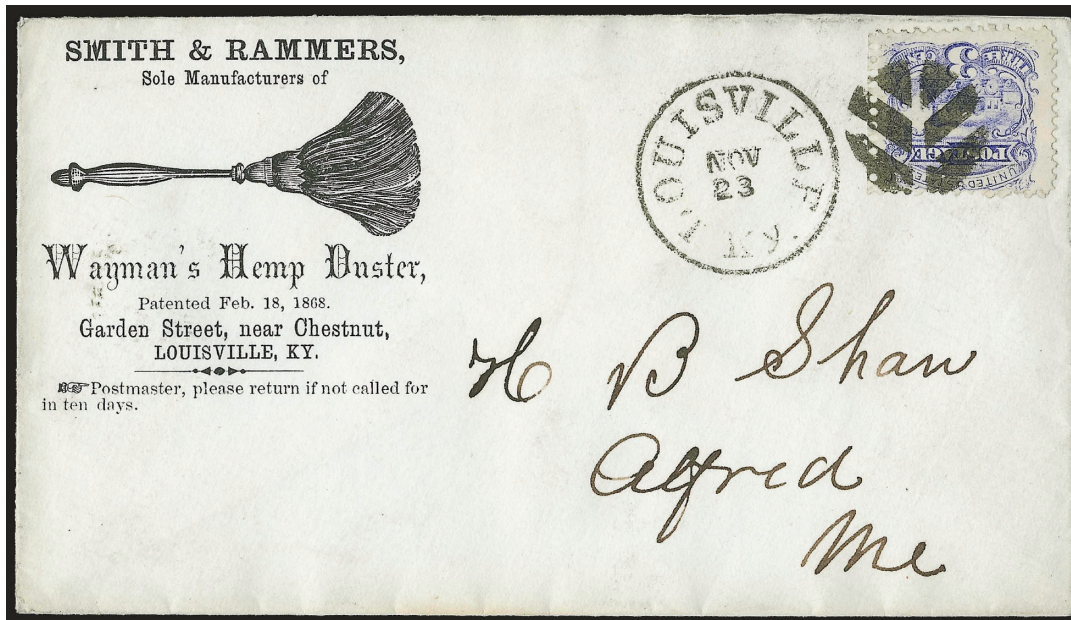


PP-L 24A



PP-L 24B
Louisville, KY 11/23/1869

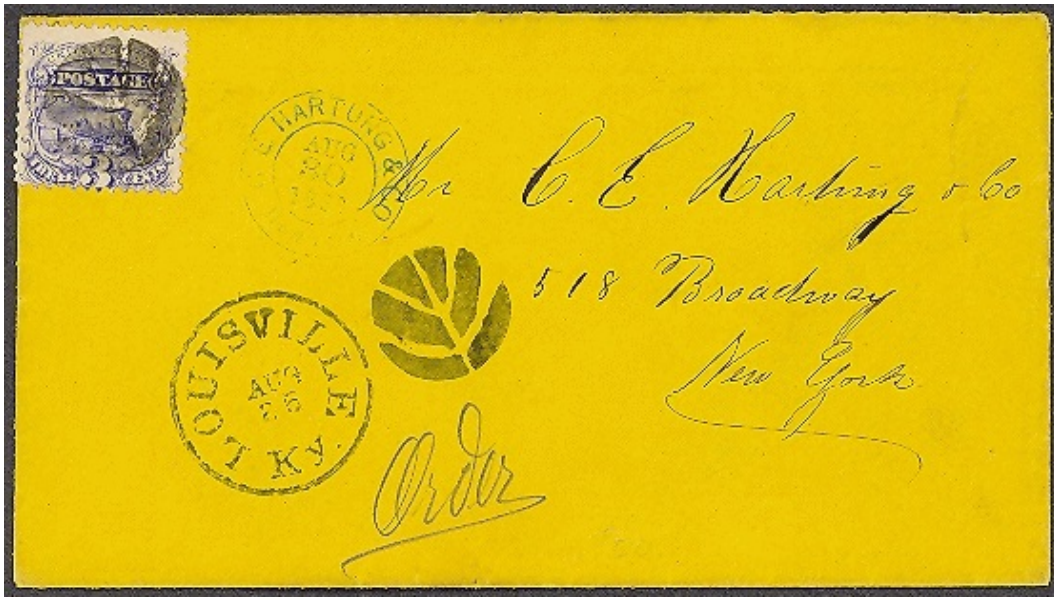
PP-L 24C [USCC 1596]
1861



PPL 24B



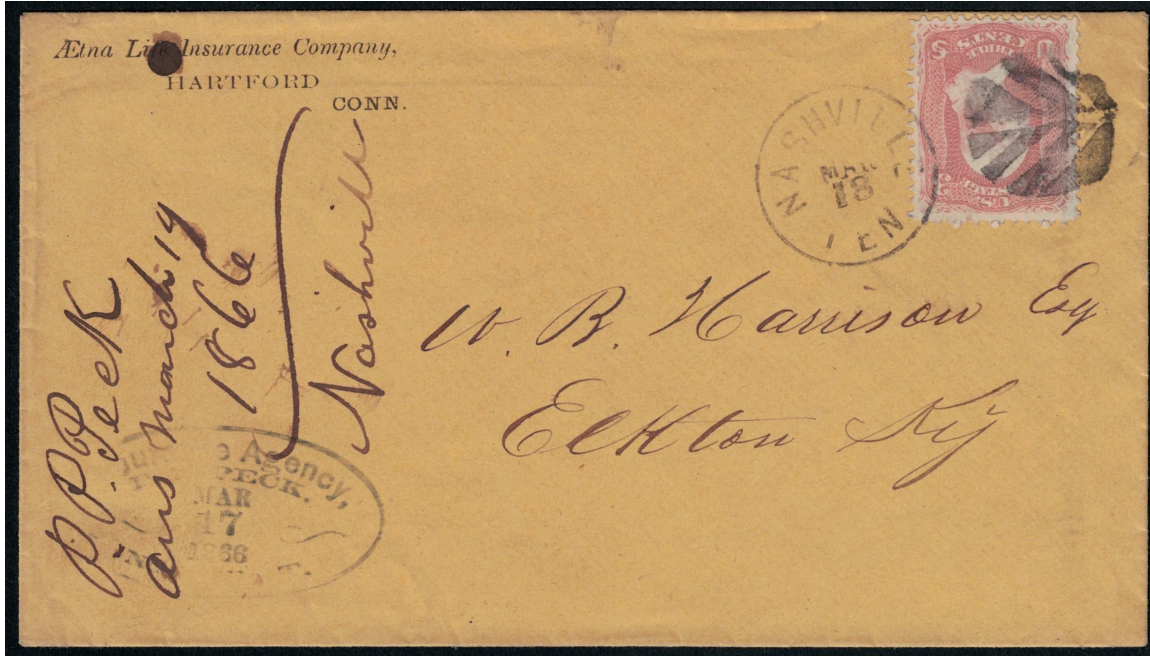
PPL 24E



4 veins on left - 3 veins on right



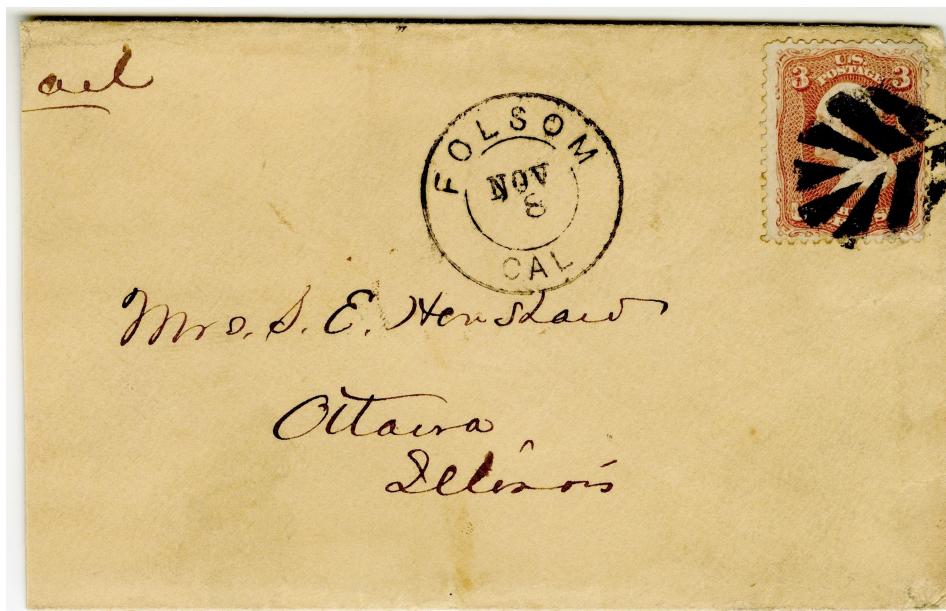
PP-L 10CC
Nashville, TN 3/18/1866



Leaves

4 veins on left - 4 veins on right

				
<p>PP-L 2 [USCC 1621] Steubenville, OH 1864</p>			<p>PP-L 2A blue [USCC 1622] 1861</p>	<p>PP-L 2B [USCC 1625] 1861</p>
				<p>need scan</p>
<p>PP-L 2C [USCC 1627] 1861</p>	<p>PP-L 2D [USCC 1629] Chicago, IL 1861</p>	<p>PP-L 2E [USCC 1635] Folsom, CA 1861</p>	<p>PP-L 2F red [USCC 1638] 1861</p>	<p>PP-L 2G Hornellsville, NY 1861</p>



PP-L 2E



PP-L 2G

Leaves



PP-L 2H
Nashville, TN 7/26/1866



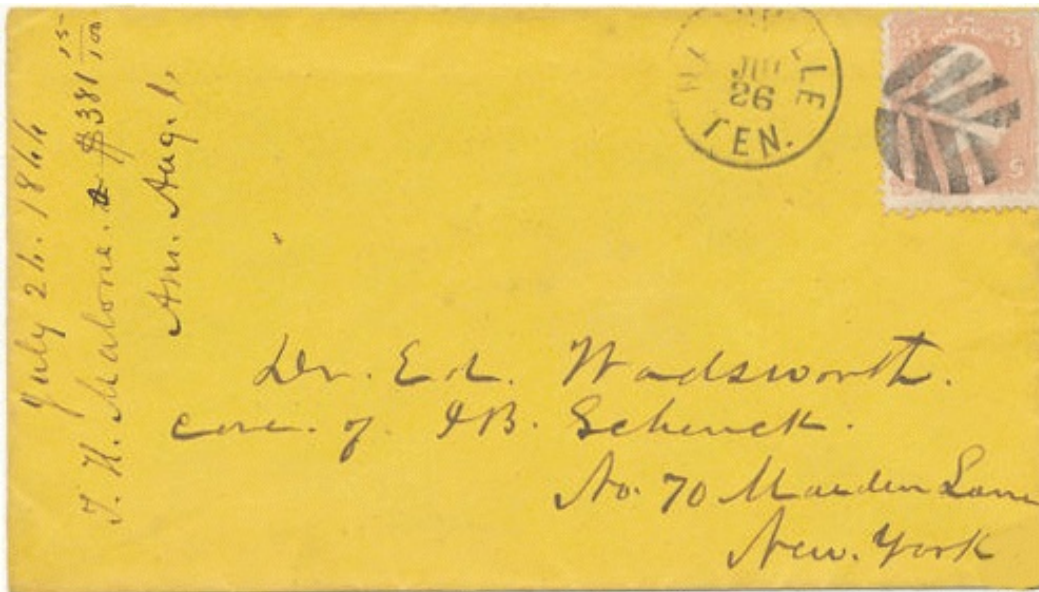
PP-L 2J
Louisville, KY 1/19/1870



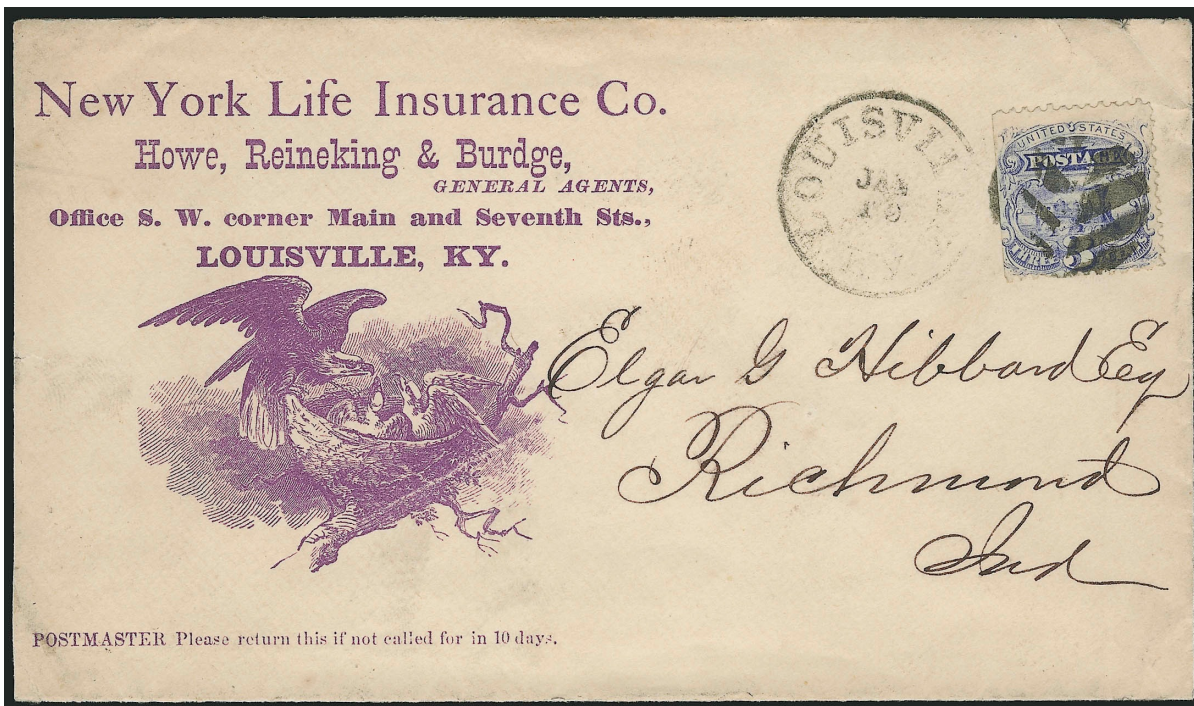
PP-L 32
Louisville, KY 1869



PP-L 32A
Louisville, KY 12/22/1869



PP-L 2H



PP-L 2J

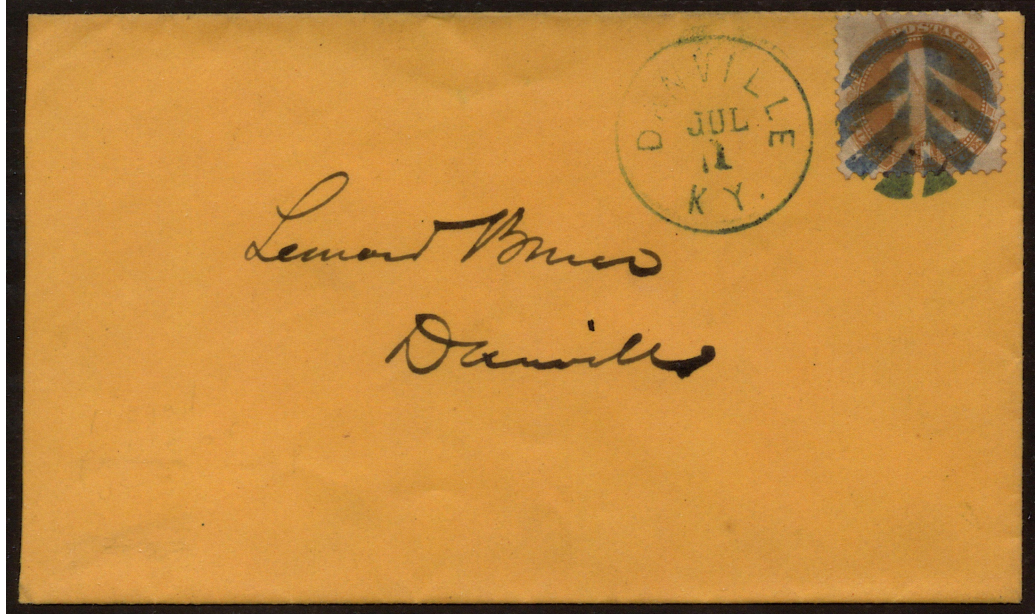


PP-L 32A

Leaves



PP-L 32D blue
Danville, KY 7/1/1869-4/8/1870(?)



PP-L 32D



PP-L 32D

Leaves



PP-L 11
1869



PP-L 16 [USCC 1630]
Indianapolis, IN 12/7/1869



PP-L 16



PP-L 16A [USCC 1550]
Newark, OH 1861



PP-L 16B [USCC 1583]
1861



PP-L 16C [USCC 1617]
1861



PP-L 16D [USCC 1668]
Savannah, GA 1861



PP-L 16E
1861



PP-L 30
1861



PP-L 31
Lebanon, KY 1869



PP-L 31A
1869



PP-L 31B
1861






PP-L 31C
1861



Leaves

4 veins on left - 5 veins on right









 <p>PP-L 6F [USCC 1660] 1861</p>	 <p>PP-L 32B Oberlin, OH <input type="checkbox"/> 4/13/1870</p>	 <p>PP-L32C1 [USCC 1721] 1861</p>		
---	--	--	--	--

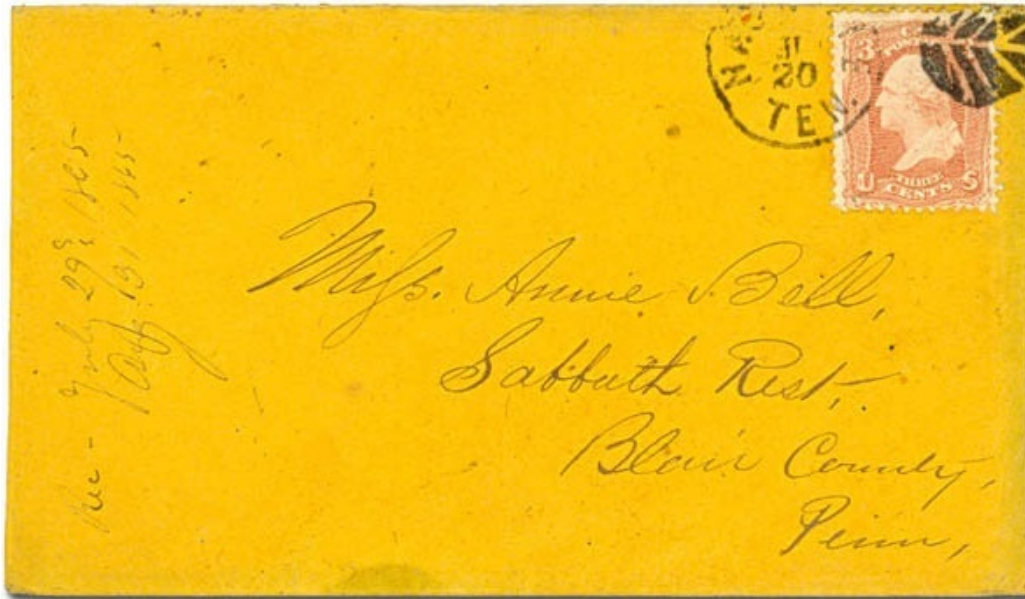


PP-L 32B

Leaves

5 veins on left - 4 veins on right

 <p>PP-L 10 Nashville, TN  7/20/1865</p>	 <p>PP-L 10B Albany, NY  1861</p>	 <p>PP-L 10C  12/5/1869</p>	  <p>PP-L 10D 1861</p>
--	---	---	--



PP-L 10



PP-L 10B



PP-L 10C

Leaves



PP-L 10E
New York, NY 7/30/1868



PP-L 10F
1862



PP-L 10G
Nashville, TN 1861



PP-L 10H [USCC1615]
1861



PP-L 10E



PP-L 10G



PP-L 10J
New York, NY 7/23/1868






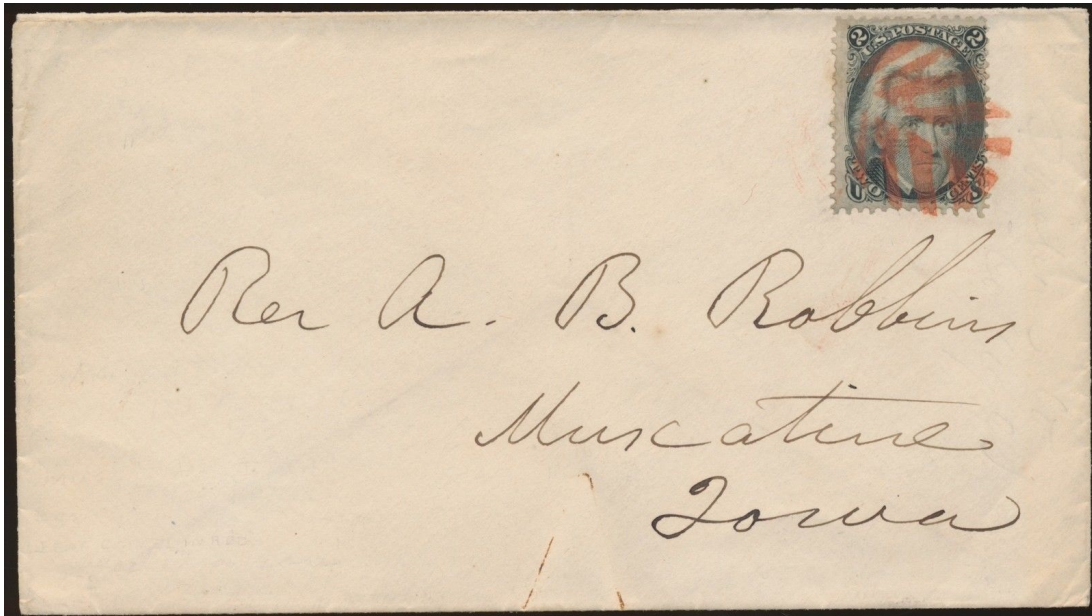
PP-L 10K USCC 1659]
1861




Leaves

5 veins on left - 5 veins on right

 <p>PP-L 1 Steubenville, OH 1861</p>	 <p>PP-L 1A red Muscatine, IA 1863</p>	 <p>PP-L 3 Steubenville, OH 1861</p>		
---	---	---	--	--



 <p>PP-L 6 New York, NY 2/17/1863</p>	<p>need scan</p> <p>PP-L 6G New York, NY 1867</p>			
--	---	--	--	--



Hannah G. Quinby

Chester Co
N.Y.

PP-L 6



Mr. J. J. ...
Amp Lins de M. M. ... Co. Ltd.
rue Auber 16
Paris France.

PP-L 6



per Eagle
via Habana

Sres Pomares y Momill
Caibarien

LL-P 6G



PP-L 6A

Leaves



PP-I 6H
Atlanta, GA □ 11/1869-12/17/1869



PP-L 6J
1867



PP-L 6H



PP-L 6H



PP-L 7
1861



PP-L 7C [USCC 1656]
1861



PP-L 7D [USCC 1576]
1861



PP-L 7F [USCC 1577]
1861

Leaves

 <p>PP-L 7G Nashville, TN 1861</p>	 <p>PP-L 40 1867</p>	 <p>PP-L 40A 1861</p>	 <p>PP-L 40B 1861</p>	 <p>PP-L 40C [USCC1644] 1861</p>
---	---	--	---	---



PP-L 7G



PP-L 7G

  <p>PP-L 40B 1861</p>	 <p>PP-L 40C [USCC1644] 1861</p>		
--	---	--	--

Leaves

6 veins on left - 5 veins on right

 <p>PP-L 5 New York, NY 1861</p>	 <p>PP-L 5A New York, NY 1861</p>	 <p>PP-L 8 1861-66</p>	
---	--	--	--



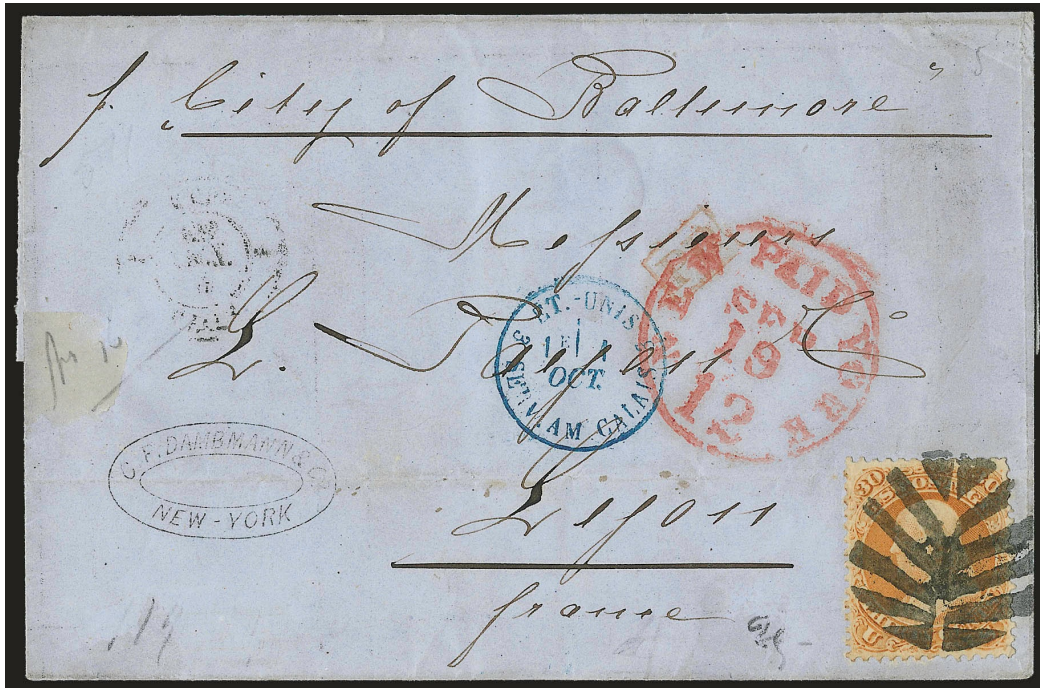
PP-L 5A

 <p>PP-L 14 Louisville, KY 1869</p>	 <p>PP-L 27 red 1867</p>	
--	--	--

Leaves

6 veins on left - 6 veins on right

				
PP-L 25 blue 1861	PP-L 25A New York, NY <input type="checkbox"/> 9/19/1868	PP-L 25B [USCC 1665] New York, NY 1869	PP-L 25C red [USCC 1676] New York, NY <input type="checkbox"/> 4/1869	PP-L 29 1861



Leaves



PP-L 4
Kelley's Island, OH 1866



PP-L 4



PP-L 4

6 veins on left - 7 veins on right



PP-L 26 [USCC 1681]
Mohawk, NY 1861



PP-L 26

Indeterminate Veins

			<p>need scan</p>	
<p>PP-L 4A Petaluma, CA [] 4/2/1869</p>	<p>PP-L 4B New York, NY [] 1861</p>	<p>PP-L 4C Brooklyn, NY [] 1861</p>	<p>PP-L 4H Harrisburg, PA [] 6/1/(1869?)</p>	





PP-L 4C



PP-L 4H

Leaves



PP-L 9
Nashville, TN 1866



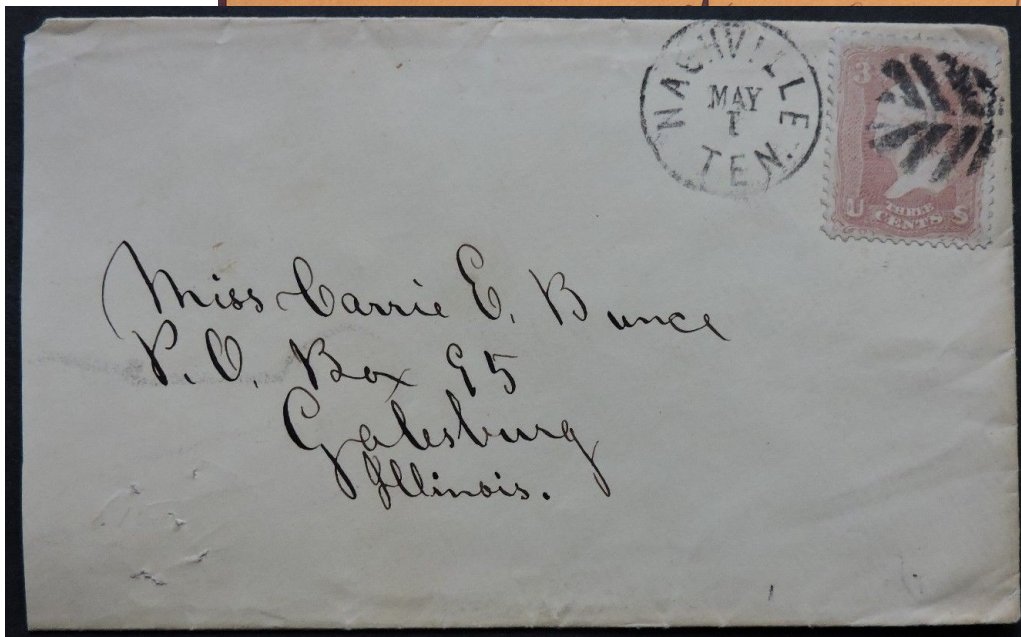
PP-L 9A
Nashville, TN 1861



PP-L 9



PP-L 9A



PP-L 9A

Leaves



PP-L 9D
Nashville, TN 1866



PP-L 9DD
1861



PP-L 12
New York, NY 1867-69

need scan

PP-L 12A
New York, NY 1861



PP-L 13 [USCC 1669]
Detroit, MI 9/23-28/1869



PP-L 12A



PP-L 13



PP-L 13



PP-L 14A
1869



PP-L 17
Nashville, TN 1861



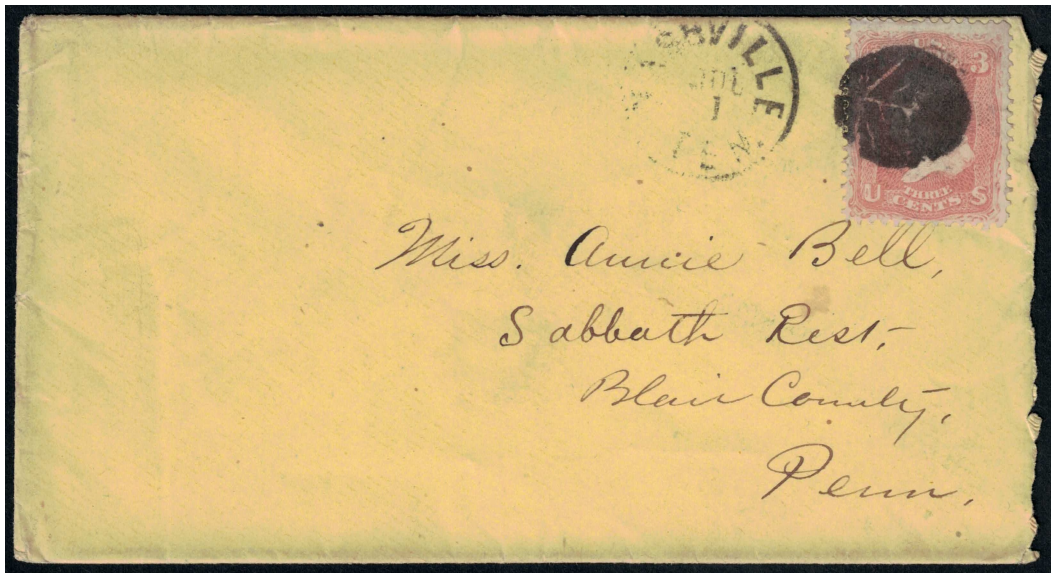
PP-L 18
Detroit, MI 1869



PP-L 19
Goldsboro, NC 1867










PP-L 20
Springfield, MO 1869



PP-L 17



PP-L 20

 <p>PP-L 28 red 1869</p>	 <p>PP-L 33 1861</p>	 <p>PP-L 33A blue [USCC 1575] Genoa, OH 1861</p>	 <p>PP-L 33B [USCC 1619] 1861</p>	
 <p>PP-L 34 1861</p>	  <p>PP-L 34A [USCC 1561] Port Royal, SC <input type="checkbox"/> 6/26/1865</p>		<p>need scan</p> <p>PP-L 34AA Port Royal, SC <input type="checkbox"/> 5/24/1865</p>	



PP-L 34A



PP-L 34AA



PP-L 34B [USCC 1594]
1867



PP-L 35 [USCC 1684]
Attica, WI 1861



PP-L 35A [USCC 1686]
1861

Leaves



PP-L 36
Sacramento, CA 1861



PP-L 36A
Sacramento, CA 1/22/1867



PP-L 37 [USCC 1647]
1867



PP-L 36A

Leaves



PP-L 37A
1869



PP-L 37B
1869



PP-L 37C
1867



PP-L 38
Dayton, OH 4/13/1863-6/11/1863



PP-L 38



PP-L 38



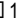
PP-L 38A [USCC 1698]
Lynchburg, VA 1869



PP-L 39
Libertyville, NJ 1869


Leaves




PP-L 41 [USCC 1557]
Newburyport, MA  1861



smaller type

PP-L 42
Newburyport, MA  1861



PP-L 42A
Port Royal, SC  4/30/1865



PP-L 41

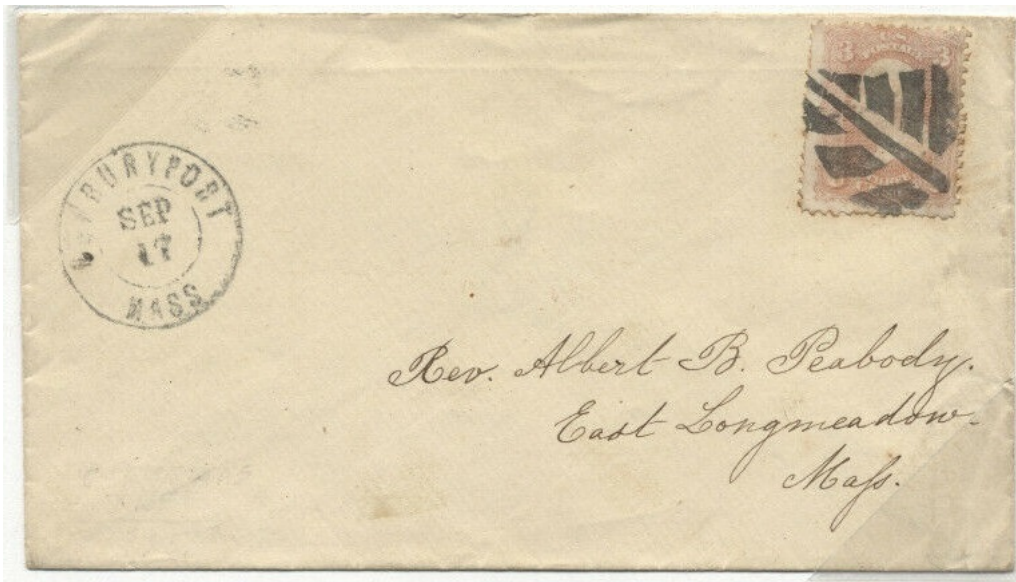


PP-L 41

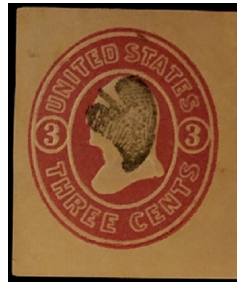


PP-L 42

PPL 42



PP-L 42A



PP-L 43 [USCC 1521]
Oneida Castle, NY 1861

Leaves



PP-L 44 [Simpson pg137-121; USCC 1520]
Joppa Village, MA 1861

PP-L 44



PP-L 44

PP-L 44





PP-L 44

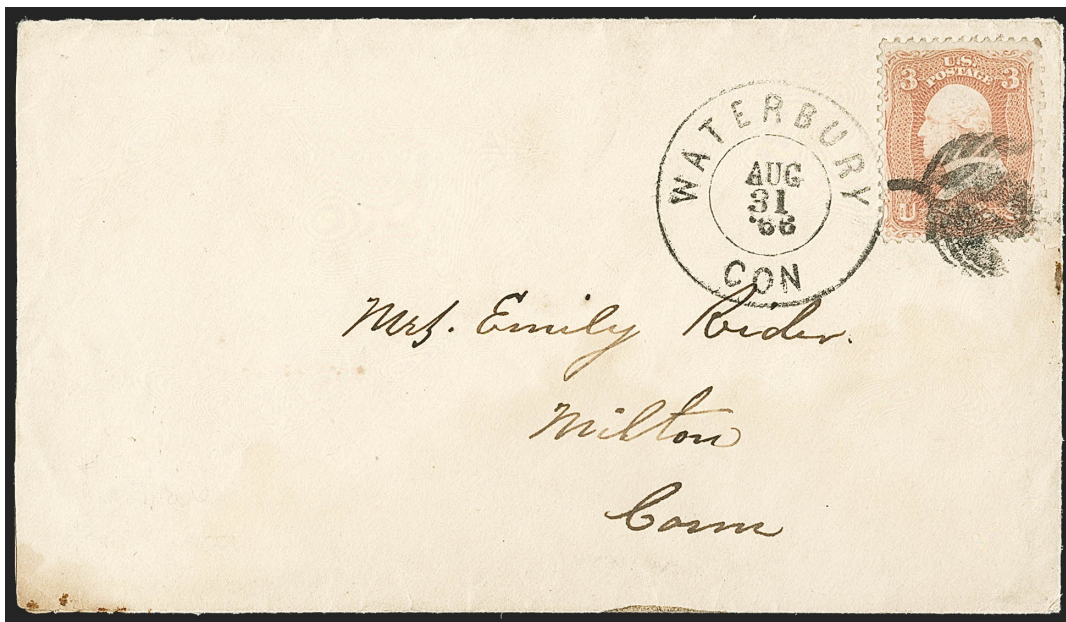
 <p>PP-L 44A Wooster, OH <input type="checkbox"/> 2/21/1870(?)</p>	 <p>PP-L 44AB 1869</p>	 <p>PP-L 44B 1861</p>	
---	---	---	--



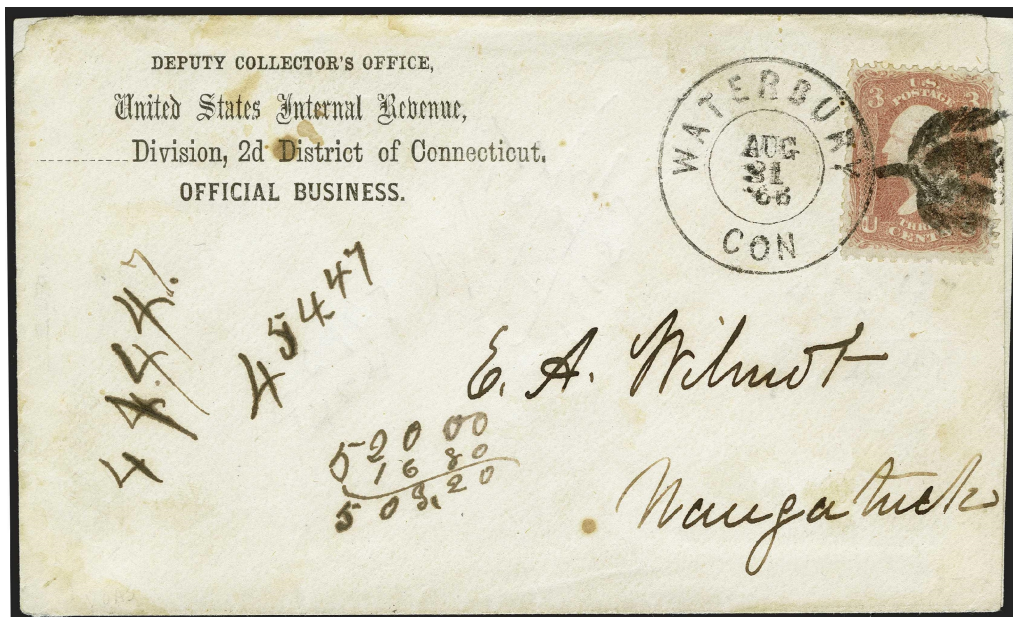
PP-L 44A



PP-L 45 [USCC 1541; Rohloff L-2]
Waterbury, CT 2/8/1866-9/6/1866



PP-L 45



PP-L 45



Mr Samuel Lowe

PP-L 45



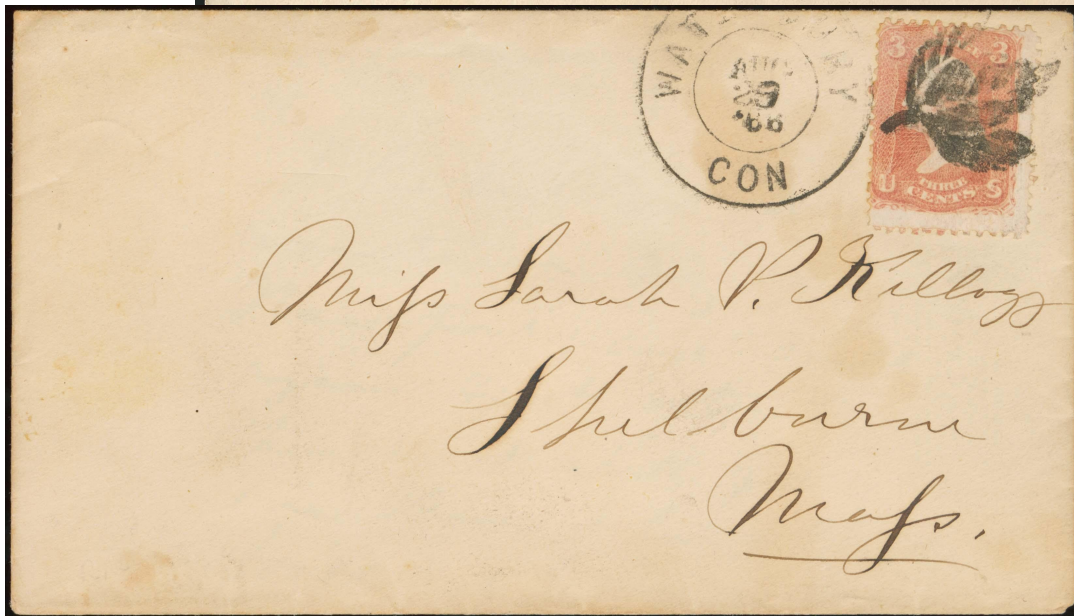
E. J. Bull Esq

PP-L 45



*Mrs. Emily Under.
Milton*

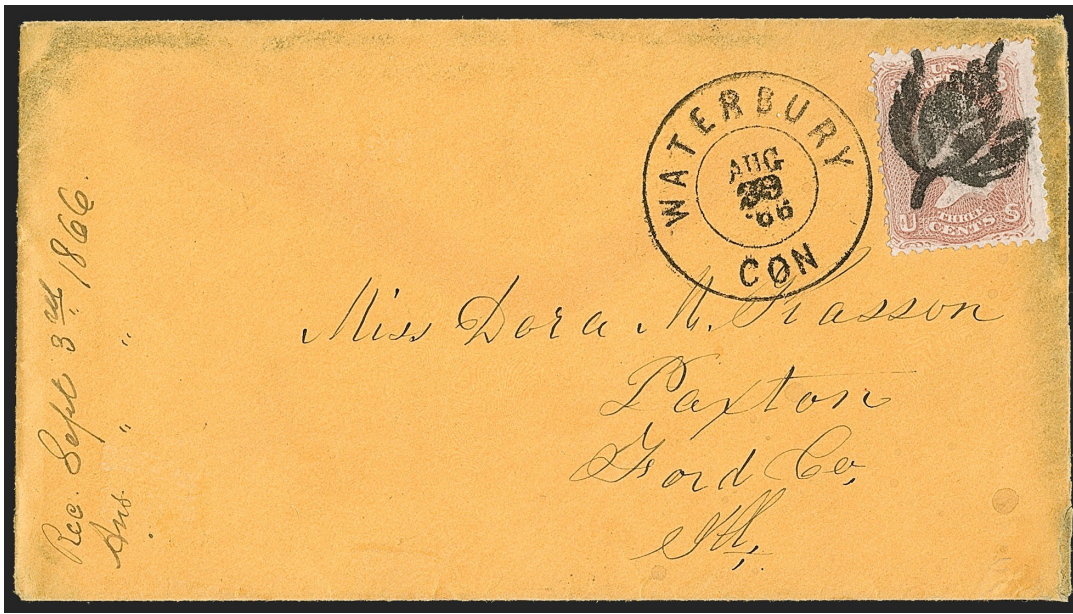
PP-L 45



*Miss Sarah P. Killogg
Spelburn
Mass.*

PP-L 45

Leaves



PP-L 45



PP-L 46
Waterbury, CT 1869



PP-L 47
Waterbury, CT(?) 1867-69



PP-L 47A [USCC 1519]
1861



PP-L 47B [USCC 1538]
1861



PP-L 47C [USCC 1543]
Egg Harbor, NJ 1869

Leaves



"Maple leaf"



PP-L 48 [Rohloff L-6] [compare with PP-L 50]
Waterbury, CT 4/7/1869-12/9/1869



PP-L 48



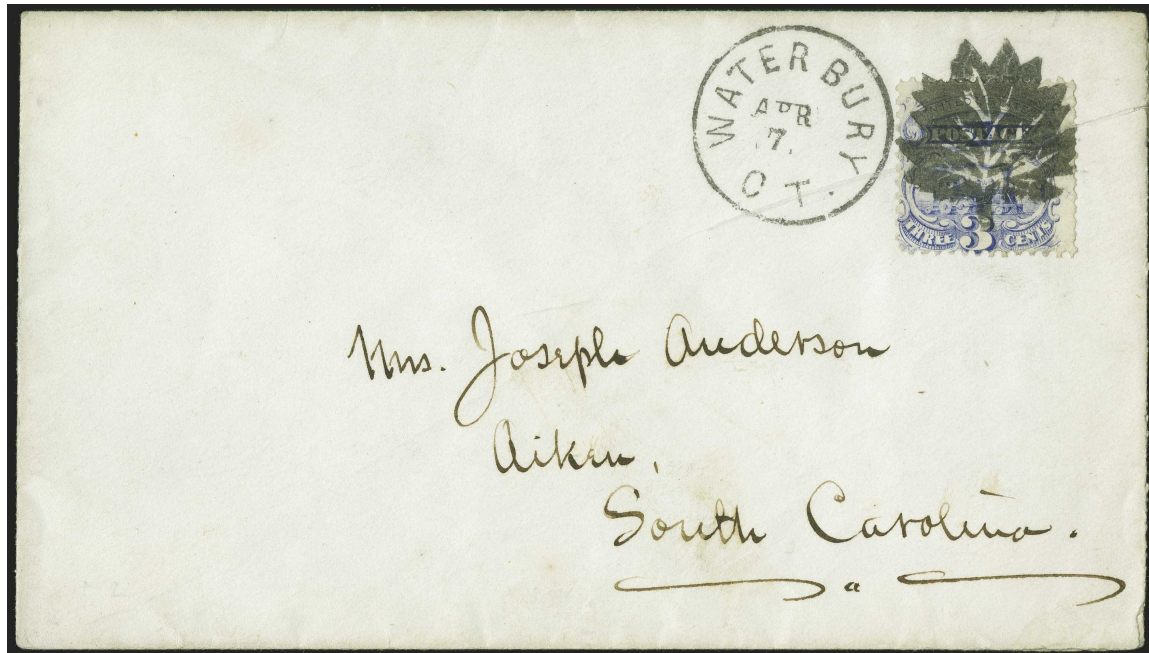
PP-L 48



PP-L 48



PP-L 48



PP-L 48

Leaves



PP-L 48A
1869



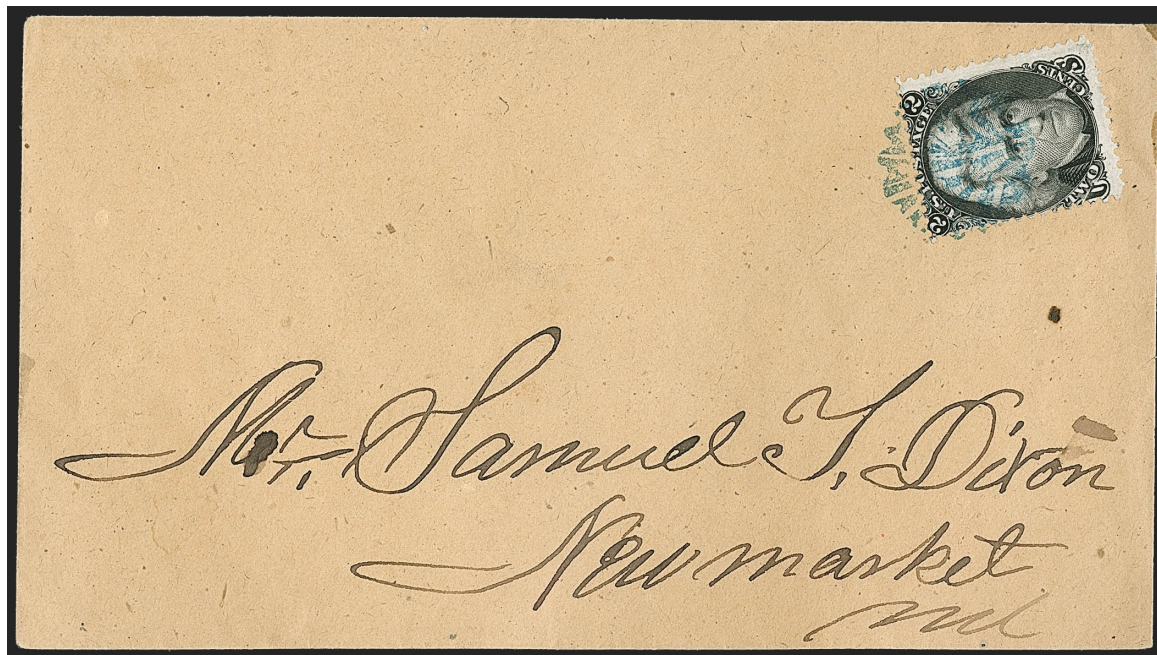
"Begonia leaf"



PP-L 49 blue [USCC 1532]
Frederick, MD 7/17/1863



PP-L 49



PP-L 49

Leaves



"Maple leaf"



PP-L 50 [Rohloff L-8; USCC 1539] [compare with PP-L 48]
Waterbury, CT □ 12/7/1869(?) - 2/13/1878



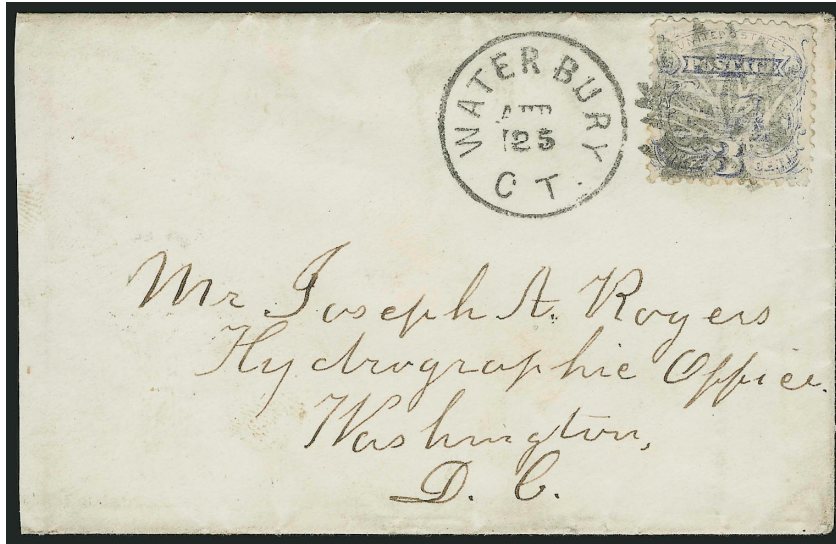
PP-L 50



PP-L 50



PP-F1 50

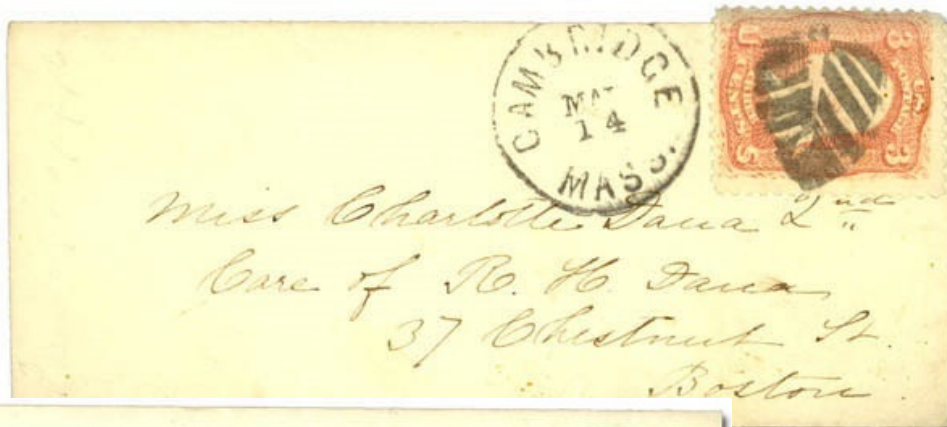


PP-F150

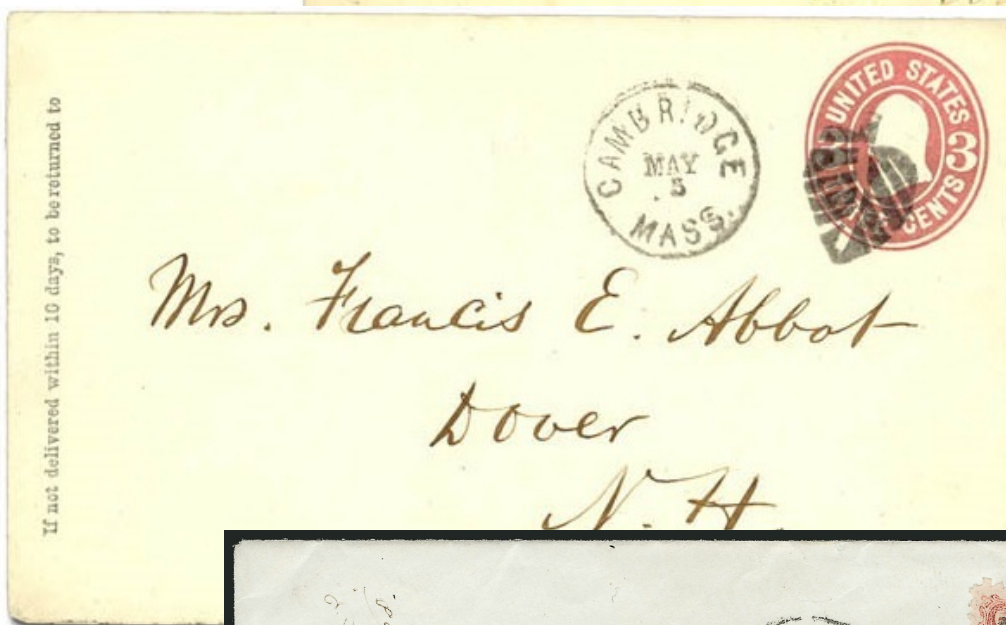
Leaves



PP-L 51 [USCC 1529]
Cambridge, MA □ 5/4/1868



PP-L 51



PP-L 51



PP-L 51

Leaves



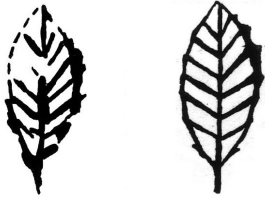
PP-L 51A
1861



PP-L 51B
1868



PP-L 52 blue
Cheyenne, Dakota Territory 1861



PP-L 53 blue [USCC 1524]
Harpersfield, OH 1861

Leaves



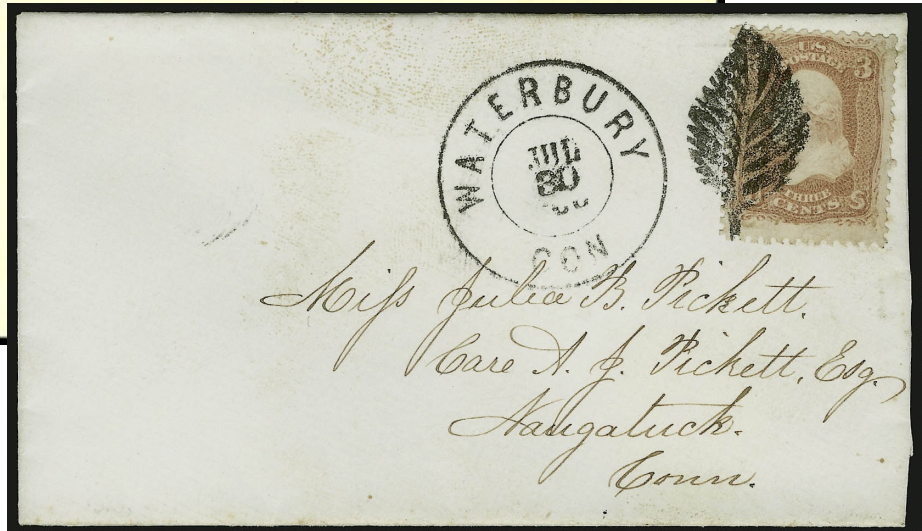
PP-L 54 [USCC 1546: Rohloff L-1]
Waterbury, CT 7/18/1866-10/21/1866



PP-L 54



PP-L 54



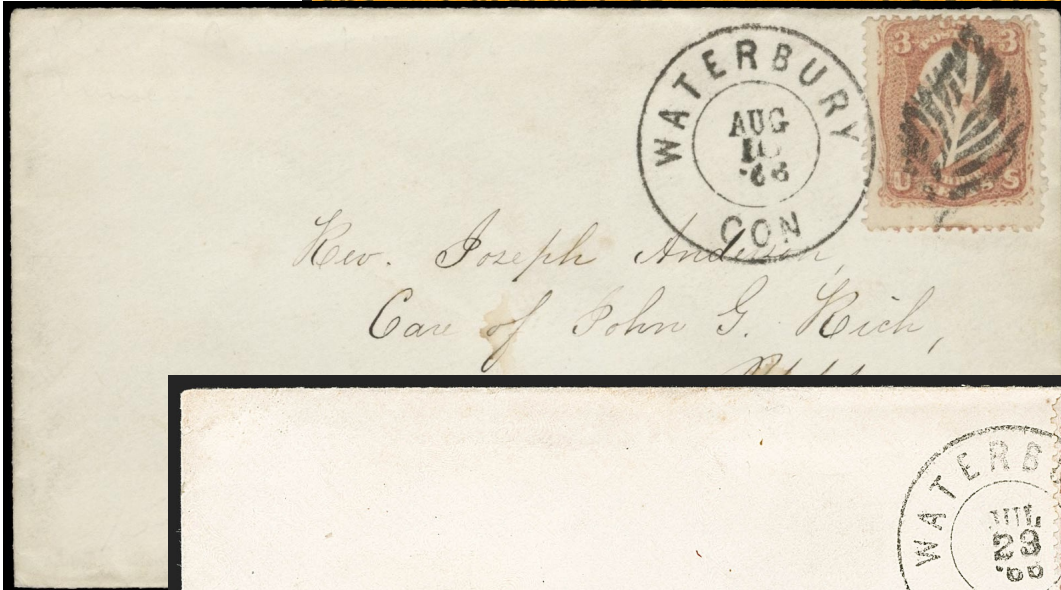
PP-L 54

PP-L 54



PP-L 54

PP-L 54



PP-L 54



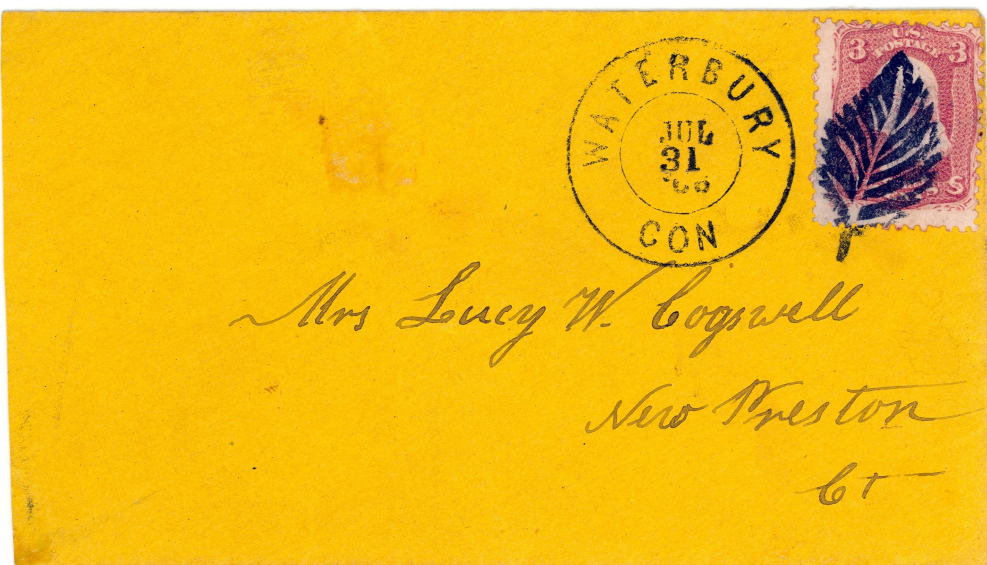
PPL 54



PPL 54



PPL 54



PPL 54

Leaves



PP-L 55 [USCC 1525]
Pavilion, NY 1861



PP-L 55A [USCC 1526]
1861



PP-L 55B [USCC 1664]
Mohonk Lake, NY 1861



PP-L 56
1869



updated June 30, 2022 (7:06pm)