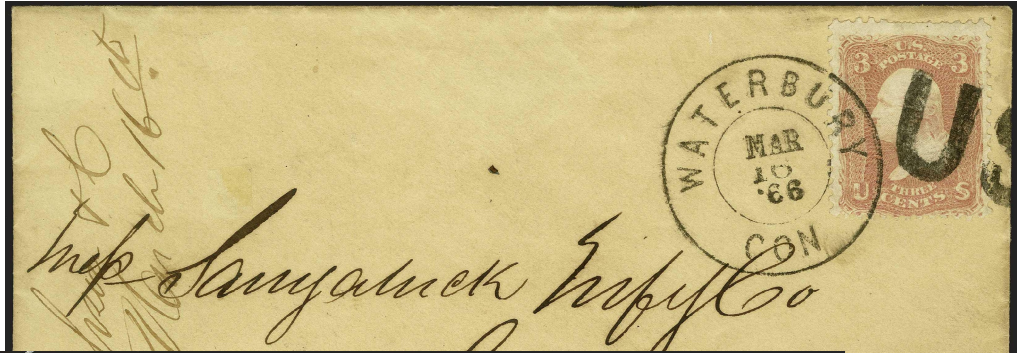


US



PT-US 1 [Rohloff M-3; USCC 5107]
Waterbury, CT □ 2/5/1866-3/19/1866



PT-US 1



PT-US 1



PT-US 1

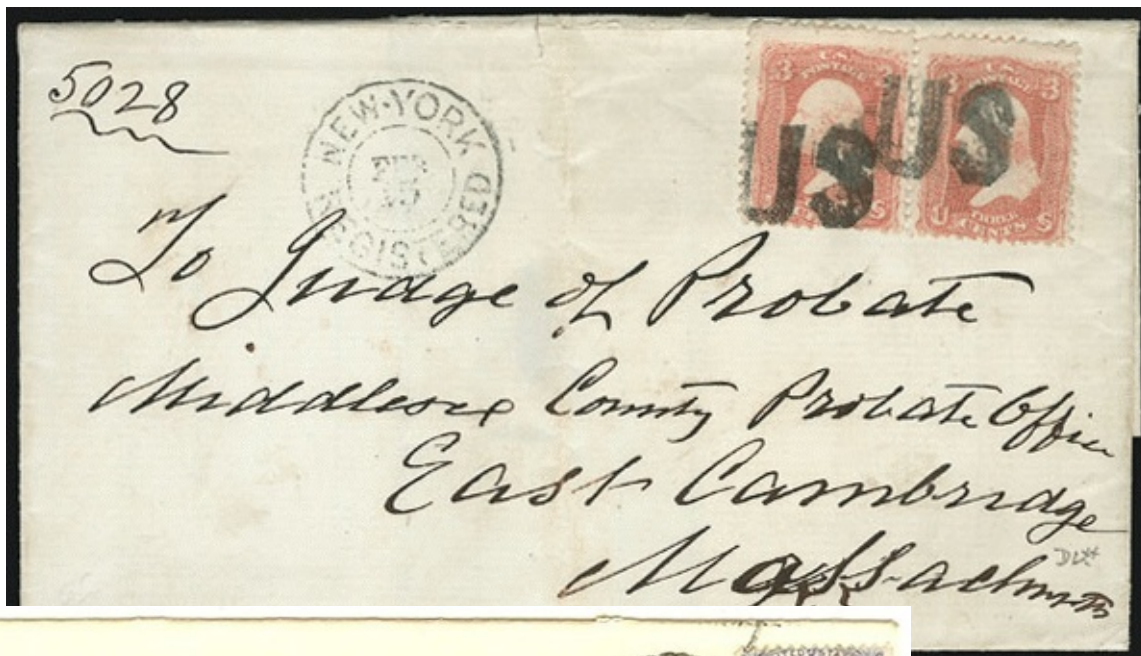


PT-US 1

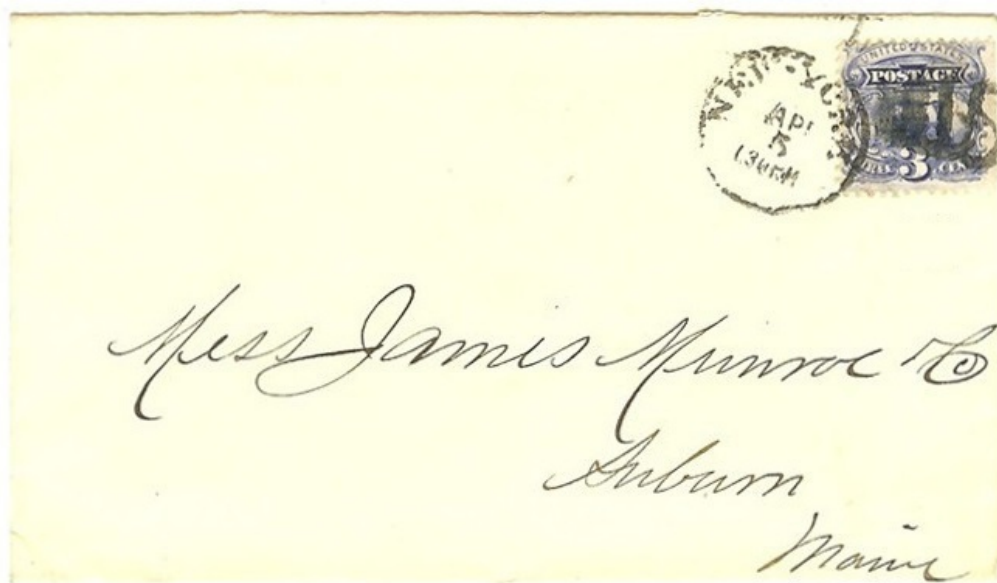
US



PT-US 2
New York, NY 1861-1869



PT-US 2



PT-US 2

US

PT-US 3
1861

US

PT-US 4
1861



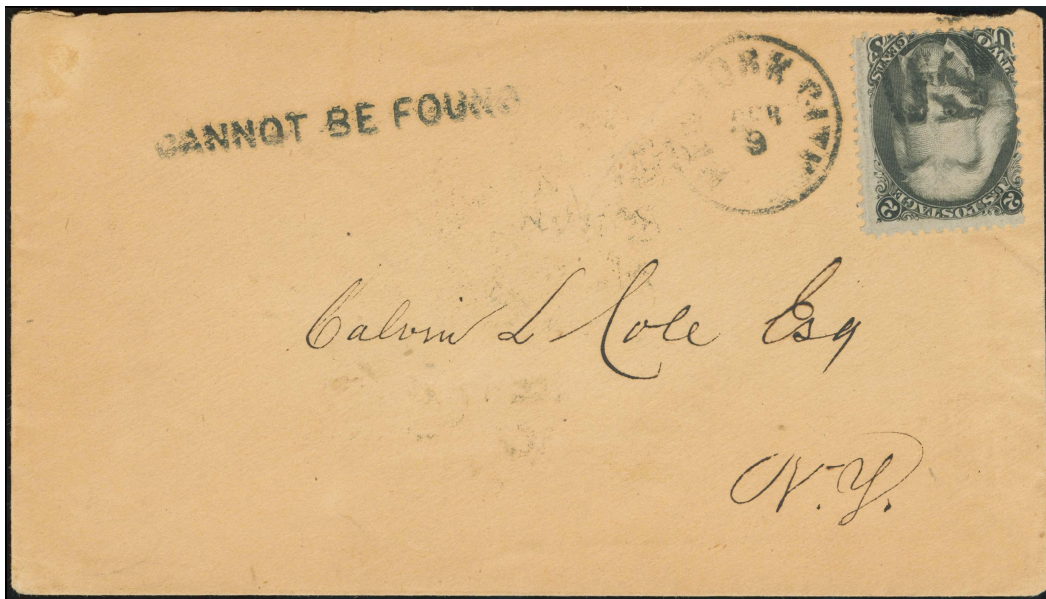
PT-US 4A
New York, NY 4/16/1870



PT-US 4B
New York, NY 1862



PT-US 4A



PT-US 4B

Patriotics - US

US



PT-US 5 [USCC 5104]
New Bern(e), NC 1861



PT-US 5

US

PT-US 6
New Bern(e), NC 1861

US



PT-US 7
Putnam, CT 1861

US



PT-US 8
1869



PT-US 8A
Burlington, VT 1861



US

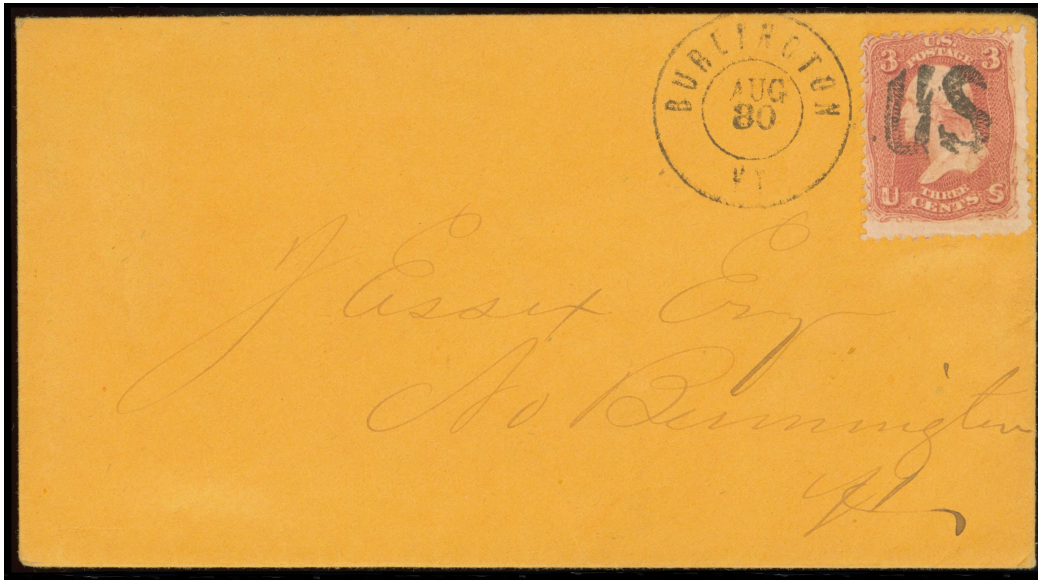
PT-US 9
Troy, NY 1861



US

compare with PT-US 100

PT-US 10
Mattapoisett, MA 1861

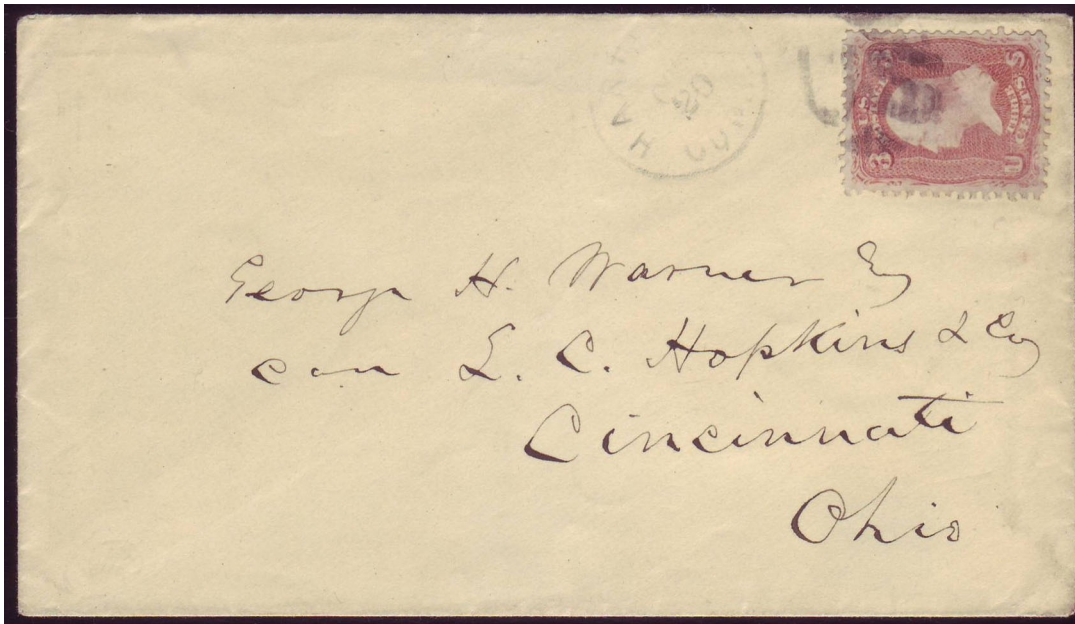


*Passy Eng
No Burlington
Vt*



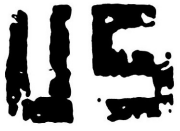
compare with PT-US 10

PT-US 10A [USCC 5084]
Hartford, CT □ 1861



*George H. Warner Esq
care L. C. Hopkins & Co
Cincinnati
Ohio*

Patriotics - US



PT-US10B
[Simpson pg153-2]
unknown town



PT-US 11
1861



PT-US 12
1867



PT-US 13
1861



compare with PT-E 12

PT-US 14
1861



PT-US 15
1861



PT-US 16
1861



PT-US 17
1861

Patriotics - US



PT-US 18
1869



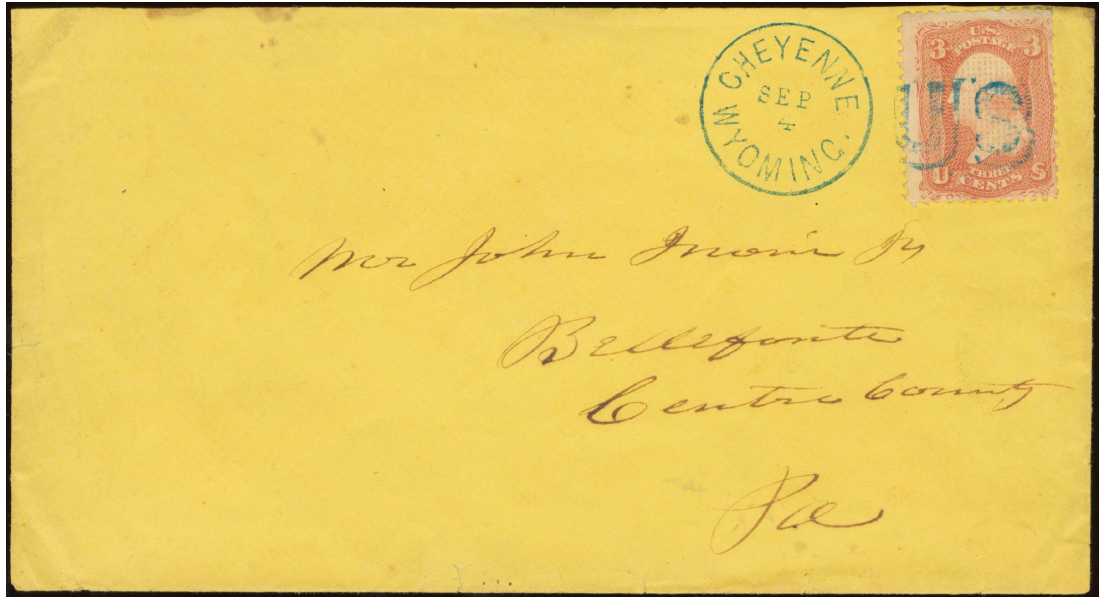
PT-US 18A [USCC 5099]
Cheyenne, Wyoming Territory
1868



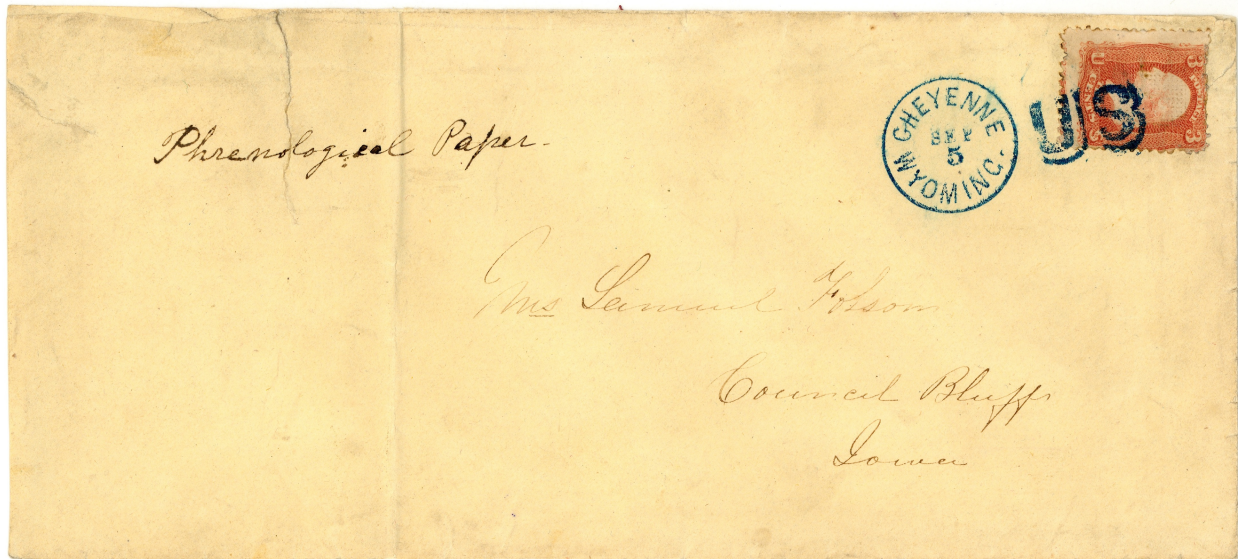
PT-US 19 blue
1861



PT-US 19A
1867




PT-US 18A



PT-US 18A (approx. 70% actual size)



PT-US 20
Union Springs, AL 1861-11/13/1869

<p>Z U</p> <p>"S" reversed</p> <p>PT-US 21 1861</p>	<p>U S</p> <p>PT-US 22 West Point, GA 1861</p>	<p>U S</p>  <p>PT-US 23 Rutland, VT 1869</p>	<p>U S</p> <p>poor strike?</p> <p>PT-US 23a Rutland, VT(?) 1861</p>
--	---	---	--



PT-US 23



PT-US 23

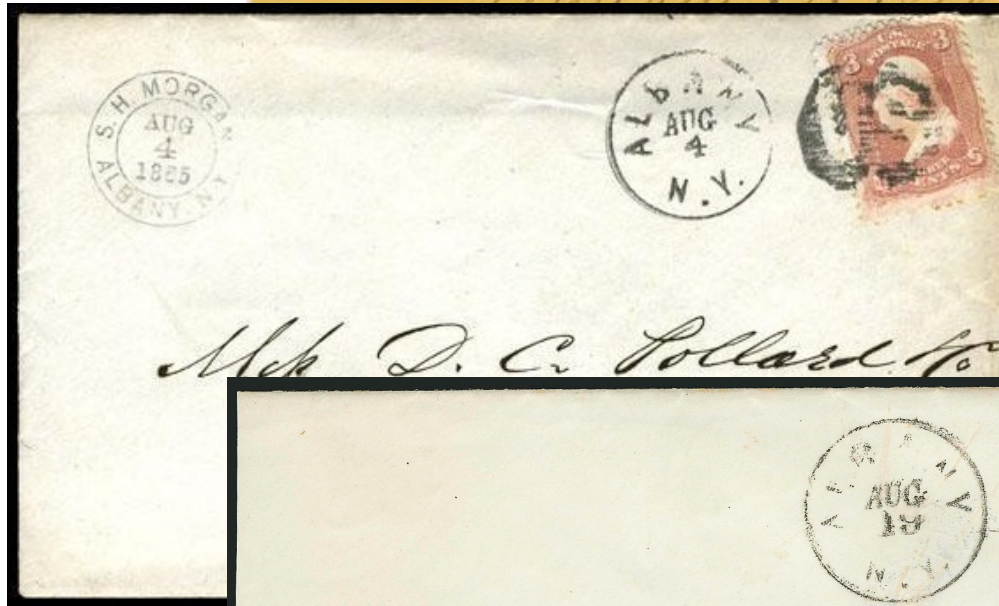
Patriotics - US



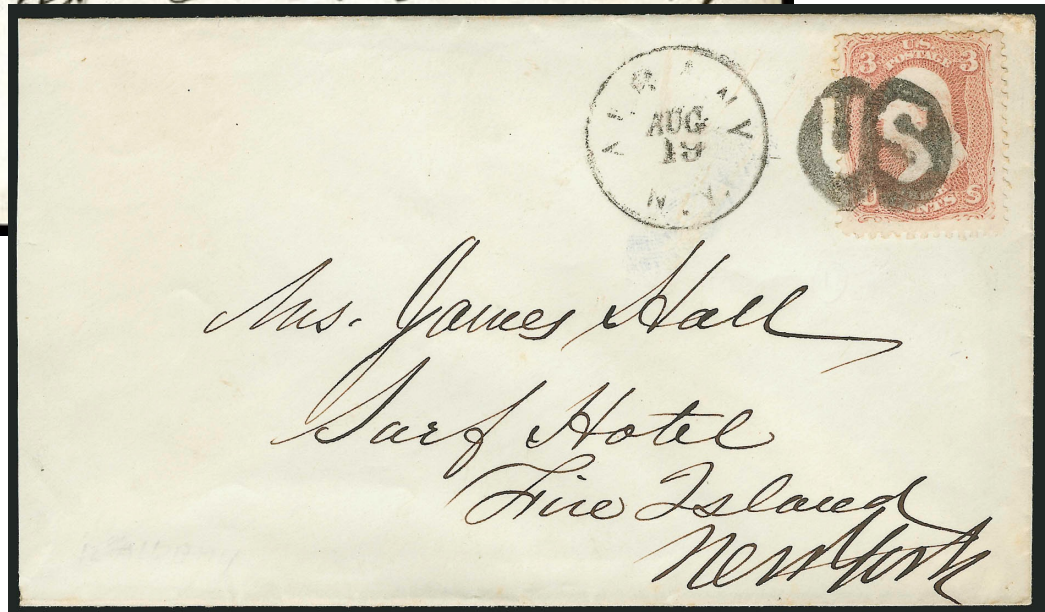
PT-US 25 [USCC 5041]
Albany, NY 8/4/1865



PT-US 25



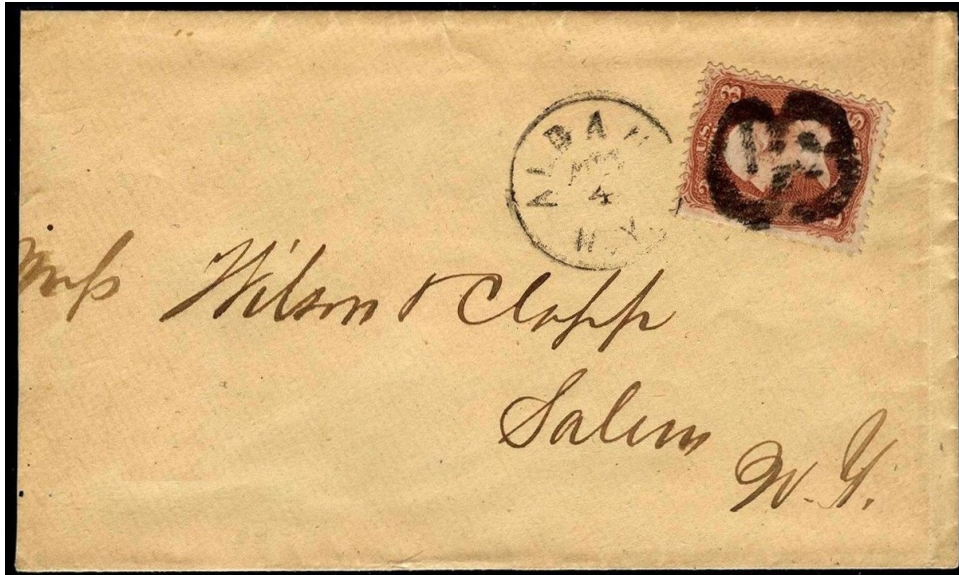
PT-US 25



PT-US 25



PT-US 25



PT-US 25

Patriotics - US



PT-US 26 [USCC 5037]
Shandaken, NY 1861



PT-US 27 blue [USCC 5033]
Auburn, NY 1861



PT-US 26



PT-US 28 [USCC 5034]
1861



"S" reversed



PT-US 29
New Orleans, LA 1861

Patriotics - US



"S" reversed



PT-US 30
La Fayette, IN 11/20/1865



"S" reversed

PT-US 31
1867



PT-US 30



PT-US 30

Patriotics - US



PT-US 32 [USCC 5039]
Watkins, NY 1869



PT-US 33 [USCC 5040]
Saratoga Springs, NY 9/13/1866



PT-US 33



PT-US 33



PT-US 34
Box Springs, GA 1861



PT-US 35
Augusta, GA 1861-66



PT-US 36
Narragansett Pier, RI 1861



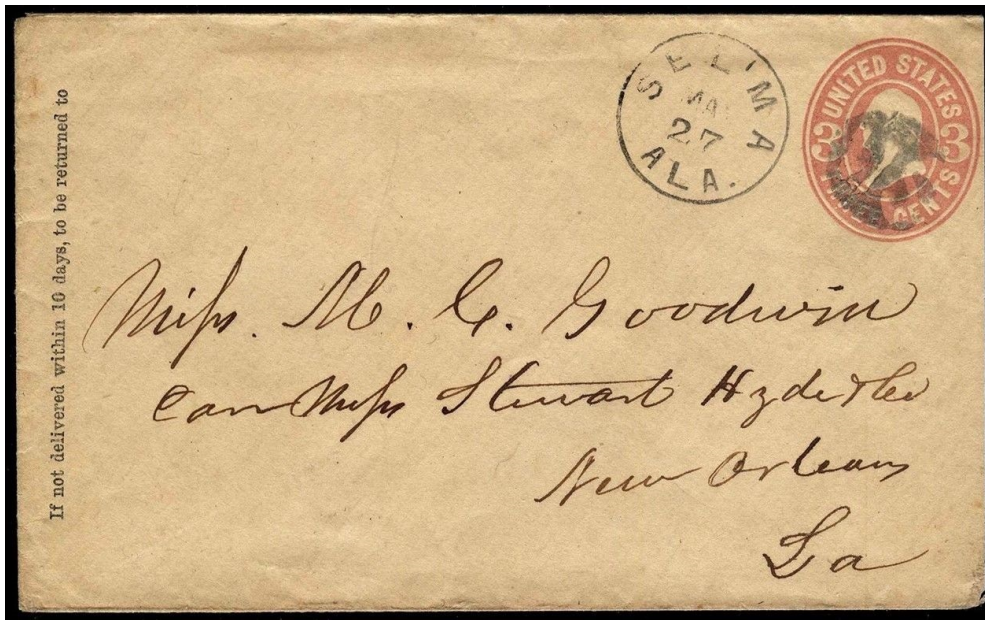
PT-US 37
Selma, AL 1867



PT-US 38 blue, black
Selma, AL 1861



PT-US 39
Plainfield, NJ 1861



PT-US 40
1869



PT-US 40A
Augusta, GA 1861

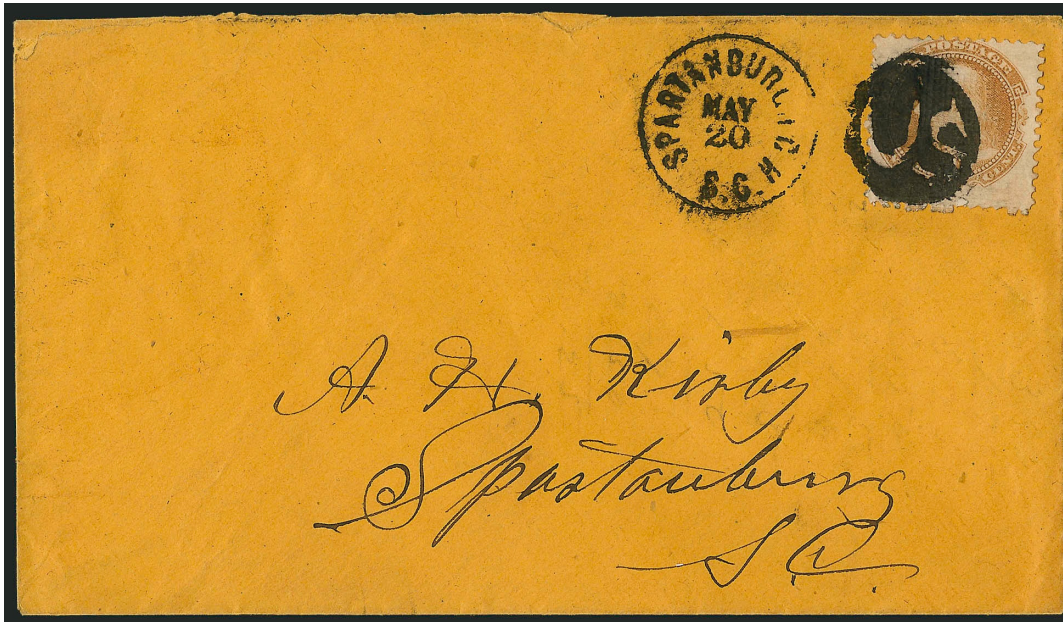


PT-US 40B [USCC 5046]
Spartanburg, SC 1861



PT-US 41
Cleveland, OH 1861





PT-US 40B



PT-US 42
1861



PT-US 42A
1861



PT-US 42B
1861



PT-US 43
Yazoo City, MS 1861



PT-US 44
San Francisco, CA 1867



PT-US 44



PT-US 45
1861



PT-US 46
1861



PT-US 47
Lone Rock, WI 1861



PT-US 48
1861-66



PT-US 48A
1867

Patriotics - US



PT-US 49 [USCC 5077]
Schooleys Mountain, NJ 1861



PT-US 49A
Fair Haven, CT 7/14/1865



PT-US 49A

Patriotics - US



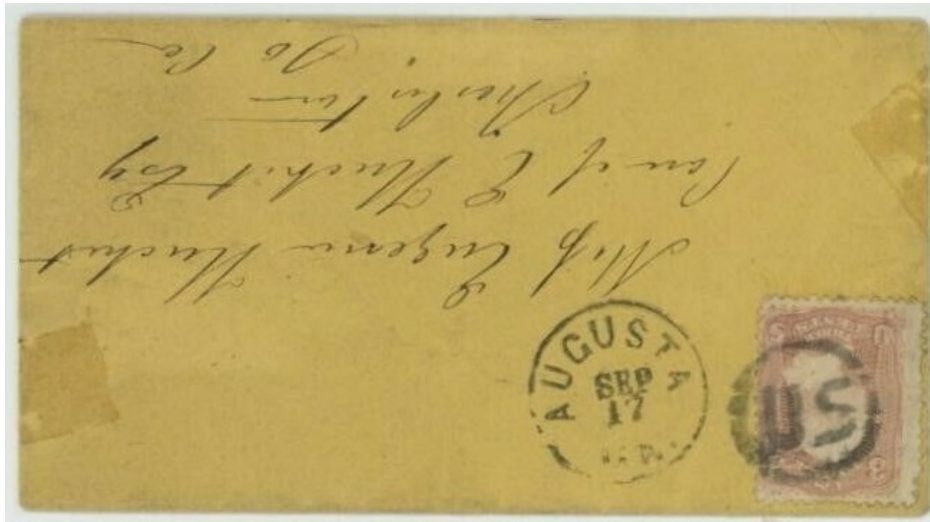
PT-US 50 [USCC 5075]
Augusta, GA 1861-67



PT-US 50



PT-US 50



PT-US 50



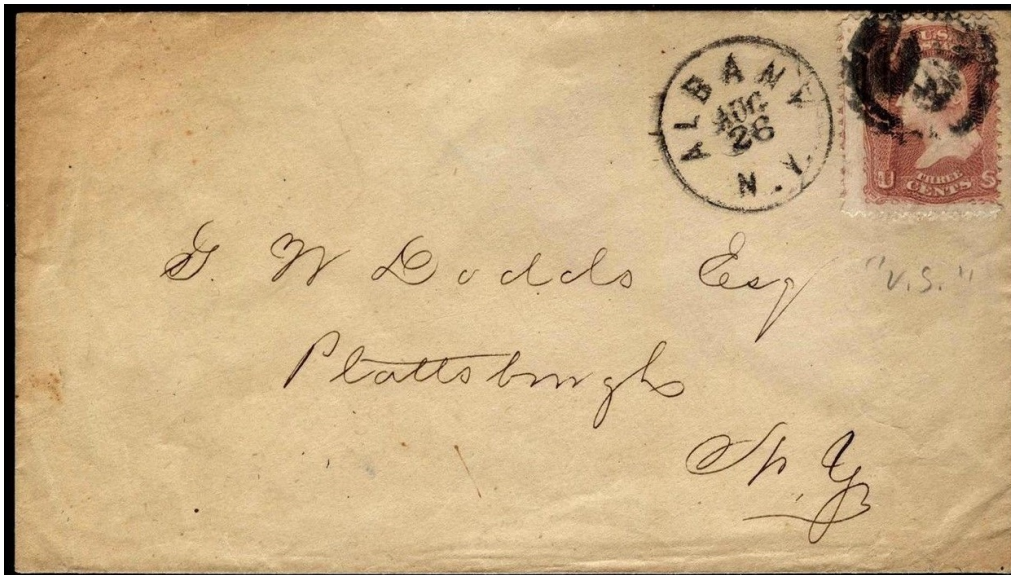
PT-US 51
Keeseville, NY 1861



PT-US 52
1869



PT-US 53 [USCC 5073]
Albany, NY 1861



PT-US 53



PT-US 54
Petersburgh, VA 1861

Patriotics - US



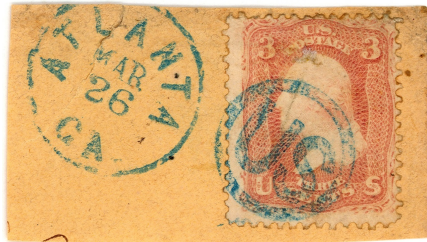
PT-US 55
1863



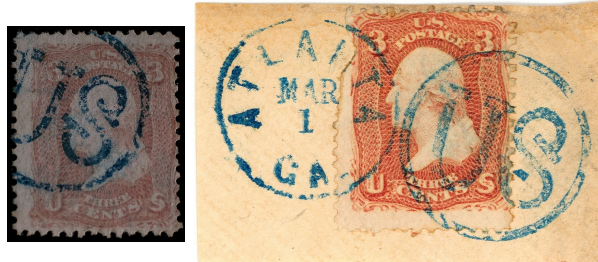
PT-US 56
St. Louis, MO 1866



PT-US 57



PT-US 56A blue
Atlanta, GA 1861



PT-US 57 blue, black [USCC 5069]
Atlanta, GA 1861

Patriotics - US



PT-US 58 blue
Atlanta, GA 1861



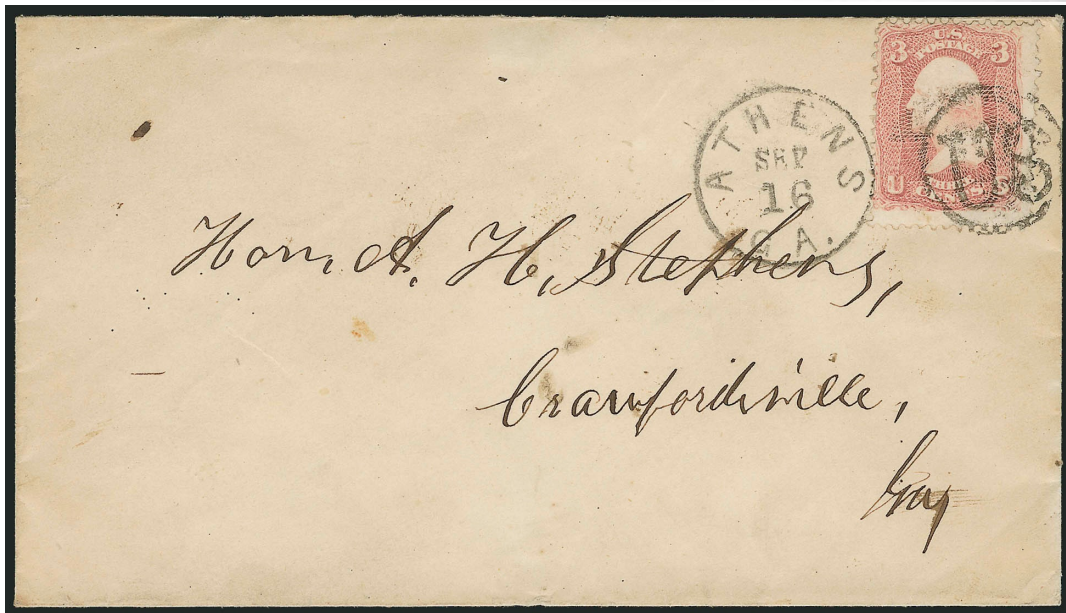
PT-US 59 [USCC 5068]
Athens, GA 1861



PT-US 60
Pomfret, CT 1861



PT-US 59



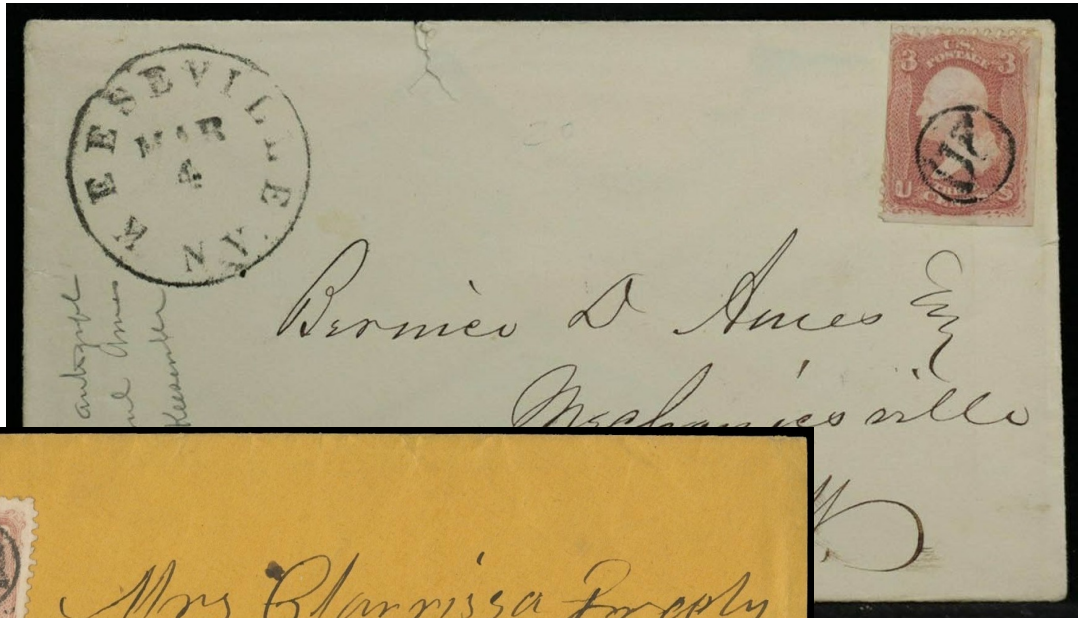
PT-US 59



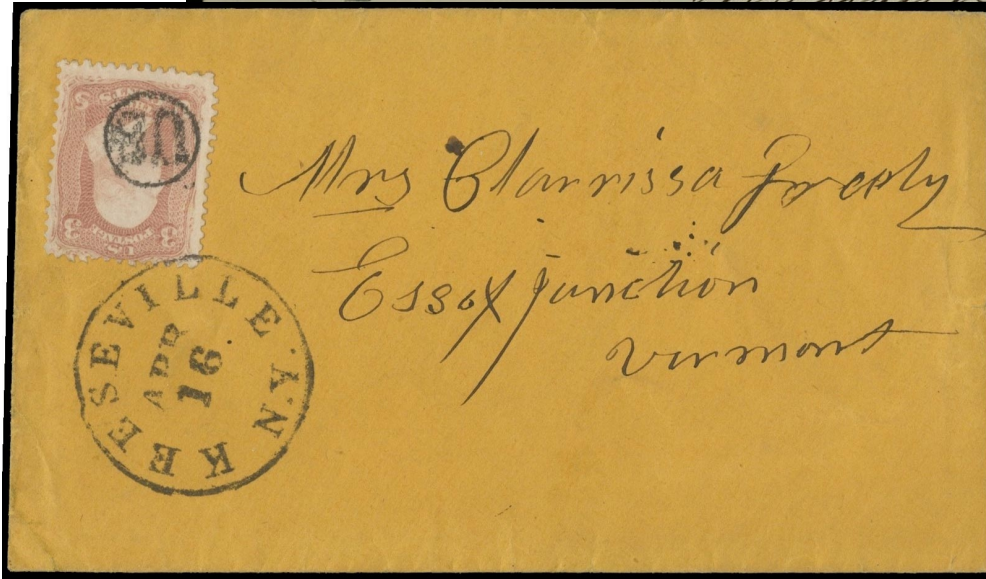
PT-US 60



PT-US 61 [USCC 5065]
Keeseville, NY 1861



PT-US 61



PT-US 61



PT-US 61A
Farmington, NH 1853



PT-US 62
Yarmouthport, MA 1861



PT-US 63 blue
Mount Wachusett, MA 1861



PT-US 64
1869



PT-US 65
1857

Patriotics - US



PT-US 61A



PT-US 66 [USCC 5130]
1861



PT-US 67 [USCC 5132]
1863



Fake?



updated February 8, 2023 (9:45am)