

Simple Designs - Grids



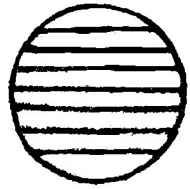
SD-G 70  
Boscawen, NH □ 1861



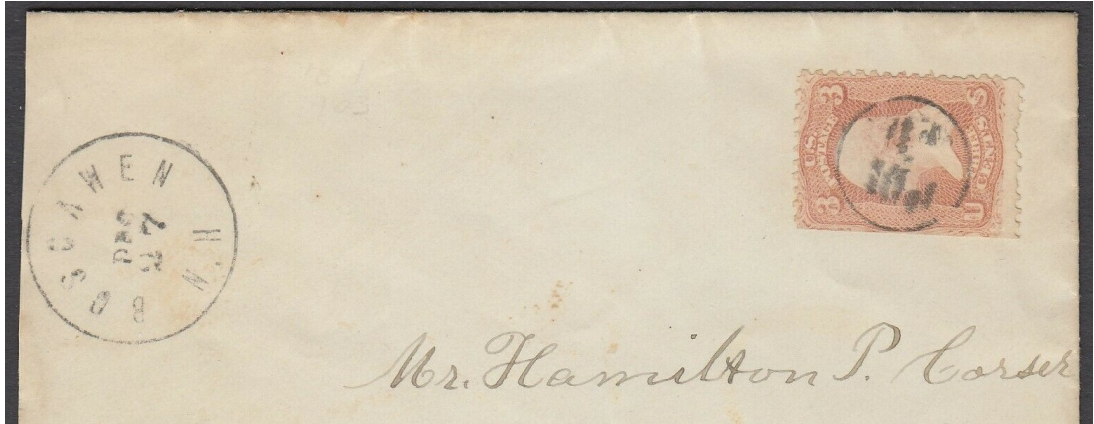
seven lines



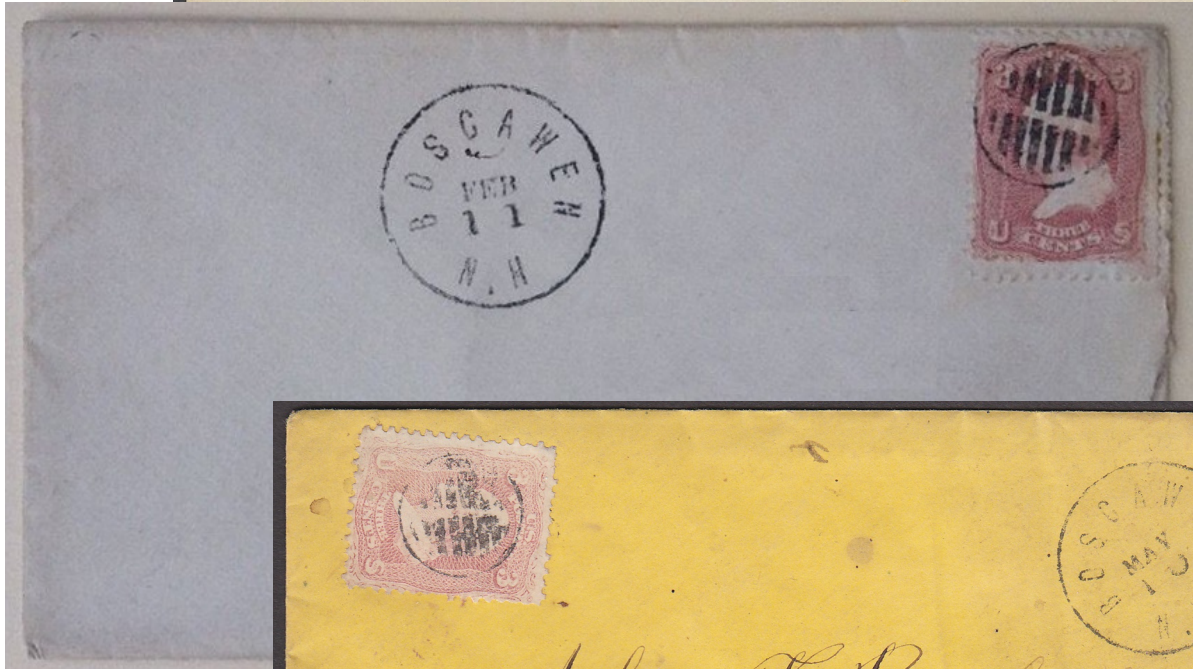
SD-G 71 red, blue, black  
1861



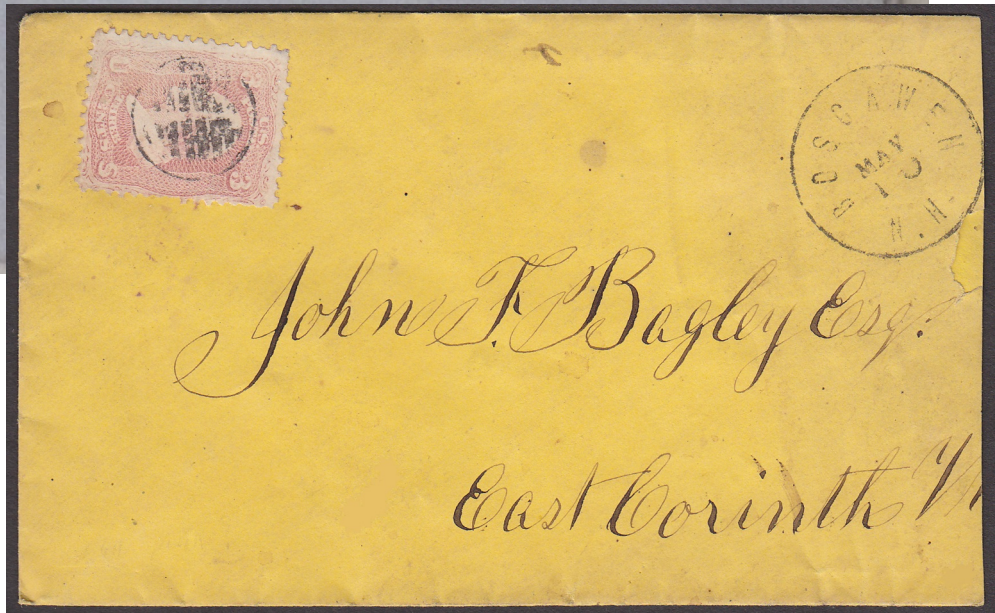
SD-G 71A  
Washington D.C. □ 1857



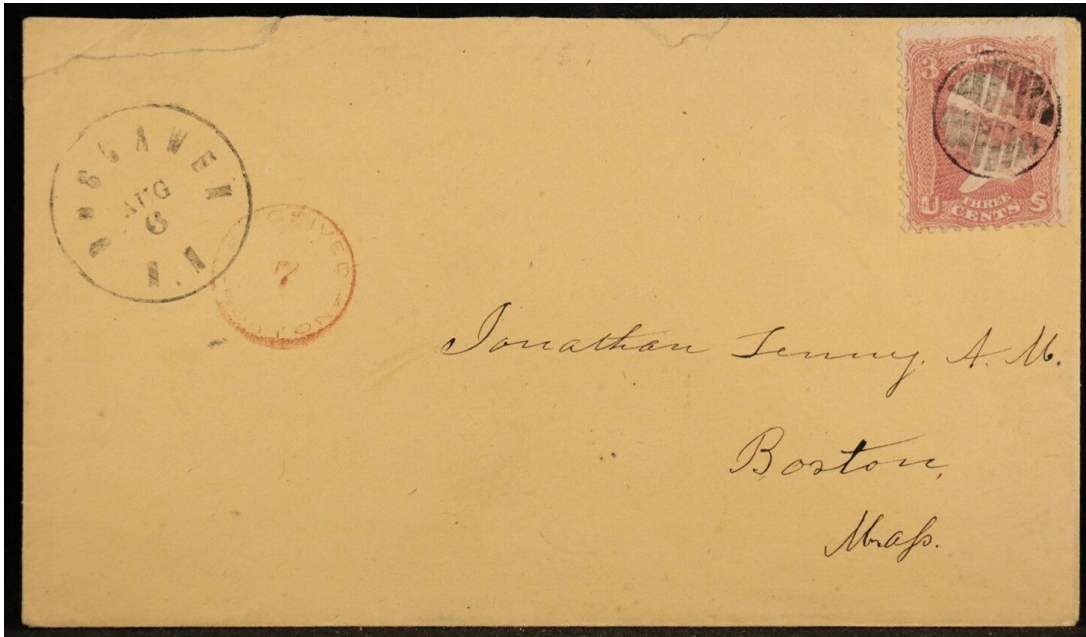
SD-G 70



SD-G 70



SD-G 70

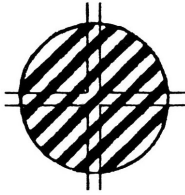


SD-G 70



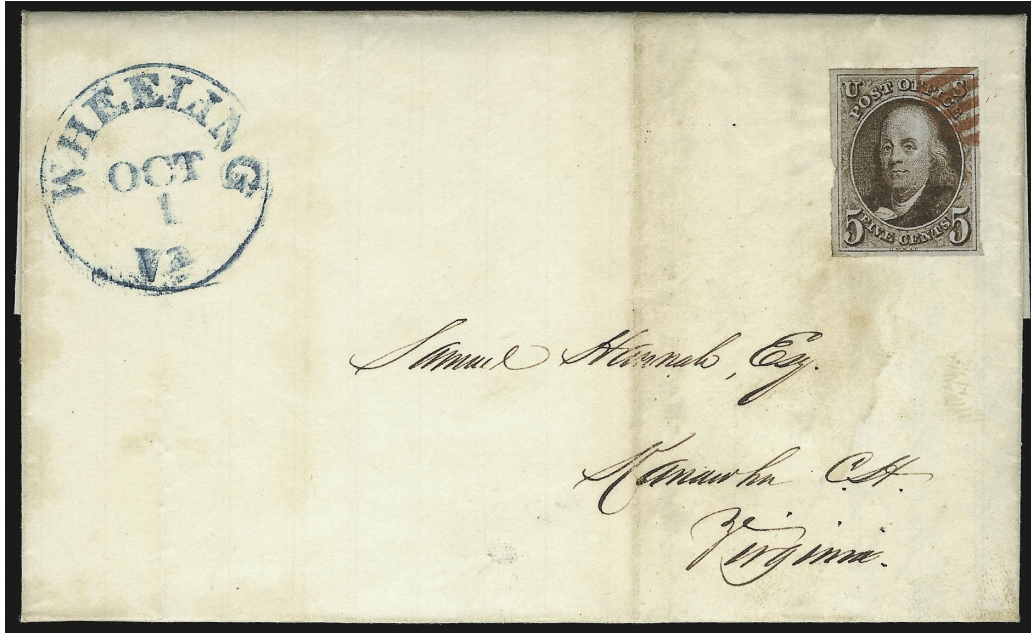
SD-G 71A

Simple Designs - Grids



Some type of control marking struck across corners

SD-G 72 red  
Wheeling, WV 1847

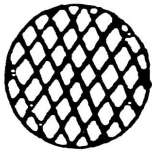


SD-G 72

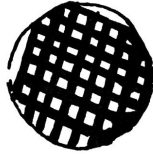


SD-G 72

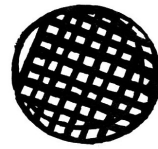
Simple Designs - Grids



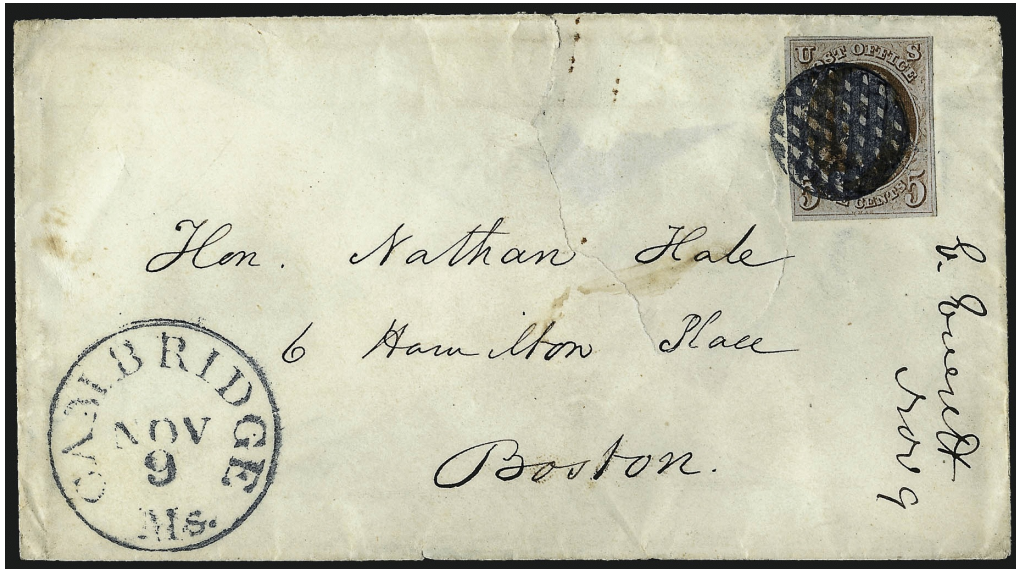
SD-G 73 blue, red  
1847



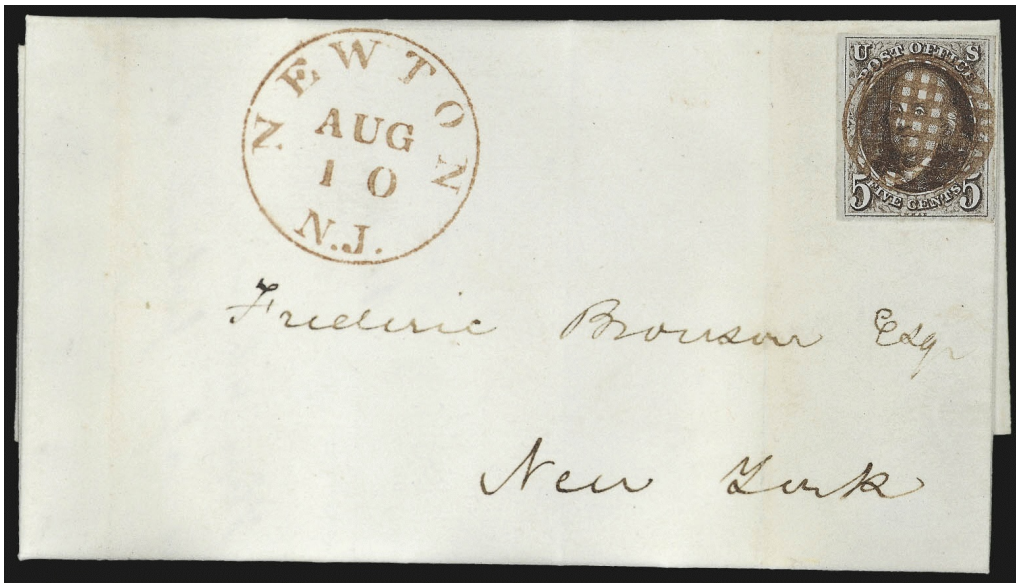
SD-G 74  
Cambridge, MA □ 1847



SD-G 75 red  
Newton, NJ □ 1847



SD-G 74



SD-G 75



SD-G 76  
West Gloucester (or)  
Gloucester, MA □ 1861



SD-G 76A blue  
1847

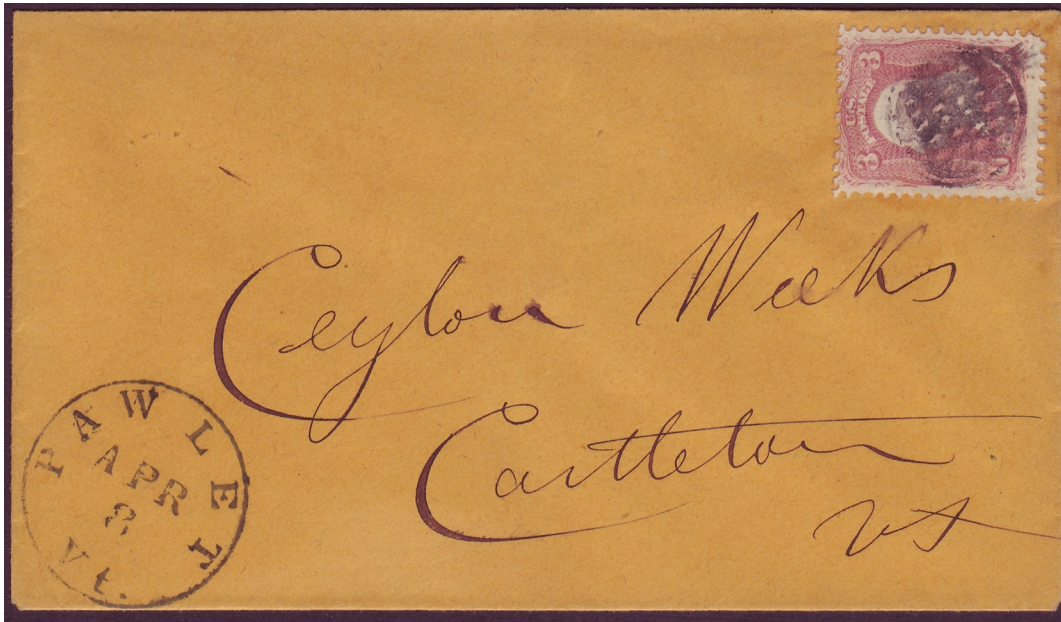


SD-G 77  
1861

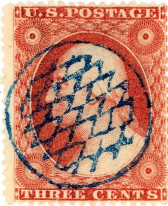


SD-G 78 blue, black  
Pawlet, VT □ 1861





SD-G 78



SD-G 79 blue  
Elmira, NY 1861



SD-G 79A blue  
Eastern R. R. 1847



SD-G 79A

Simple Designs - Grids

 <p>SD-G 81 red Brunswick, ME □ 1847</p>	 <p>SD-G 82 1861</p>			
 <p>"fence" SD-G 84 Mason, OH □ 1861</p>	 <p>SD-G 85 1851</p>	 <p>SD-G 86 Rheinbeck, NY □ 1851</p>	 <p>SD-G 87 1861</p>	 <p>SD-G 88 Oquawka, IL □ 1861</p>
 <p>SD-G 91 Weyauwega, WI 1861</p>	 <p>"rope"</p>	 <p>SD-G 92 Castleton, VT □ 1861</p>		 <p>SD-G 92A 1861</p>



SD-G 92

Simple Designs - Grids



worn device



SD-G 93 red, black, brown [Simpson pg147-246 & 247]  
New York, NY 1847-51



SD-G 93



SD-G 93



SD-G 93

Simple Designs - Grids



SD-G 93



SD-G 94 [Simpson pg141-161]  
Detroit, MI □ 1861



SD-G 94A  
[Simpson pg143-191]  
Nashua, NH



SD-G 94B  
[Simpson pg145-219]  
Bleeker, NY □ 1857



11 bars?

SD-G 94BB  
1857



SD-G 94B



Simple Designs - Grids

 <p><b>SD-G 94C</b> [Simpson pg147-247] New York, NY</p>	 <p><b>SD-G 94D</b> [Simpson pg139-130] Montague, MA</p>	 <p><b>SD-G 94E</b> [Simpson pg147-253] New York, NY</p>	 <p><b>SD-G 94EE</b> [Simpson pg153-342] town unknown</p>	 <p><b>SD-G 94F</b> [Simpson pg147-255] Roxbury, NY</p>
 <p><b>SD-G 94FF</b> [Simpson pg135-70] Lybrand [DPO 1852-1868], IA 2/26/1855(?)</p>		 <p><b>SD-G 94G</b> [Simpson pg151-307] Wakefield, RI</p>		



SD-G 94FF

Simple Designs - Grids



SD-G 95

Sparta, WI 10/23/1862-9/12/1863



SD-G 95

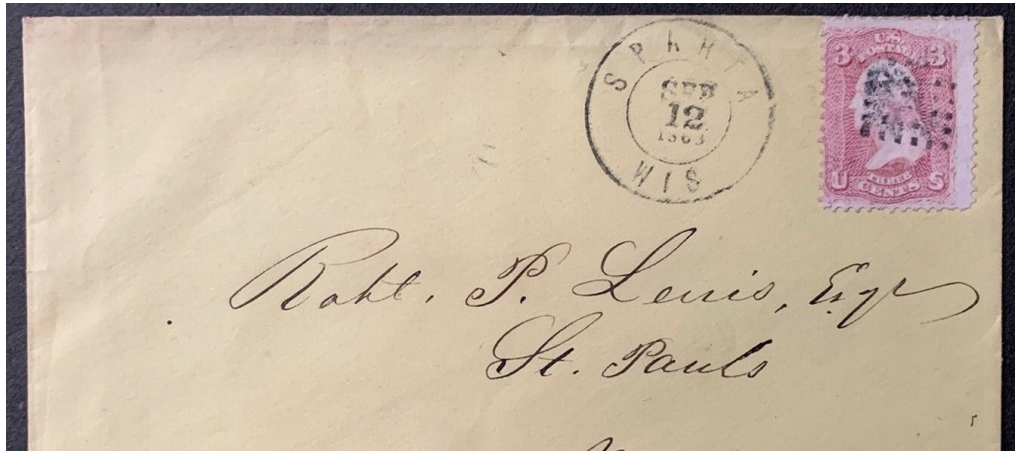


SD-G 95



SD-G 95

Simple Designs - Grids



SD-G 95



SD-G 95



SD-G 95



**SD-G 95A**  
[Simpson pg137-114]  
Enfield, MA

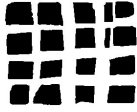


**SD-G 95AA**  
[Simpson pg151-326]  
Westminster, VT

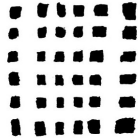


**SD-G 95AB**  
1861

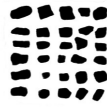
Simple Designs - Grids



SD-G 95B  
1861



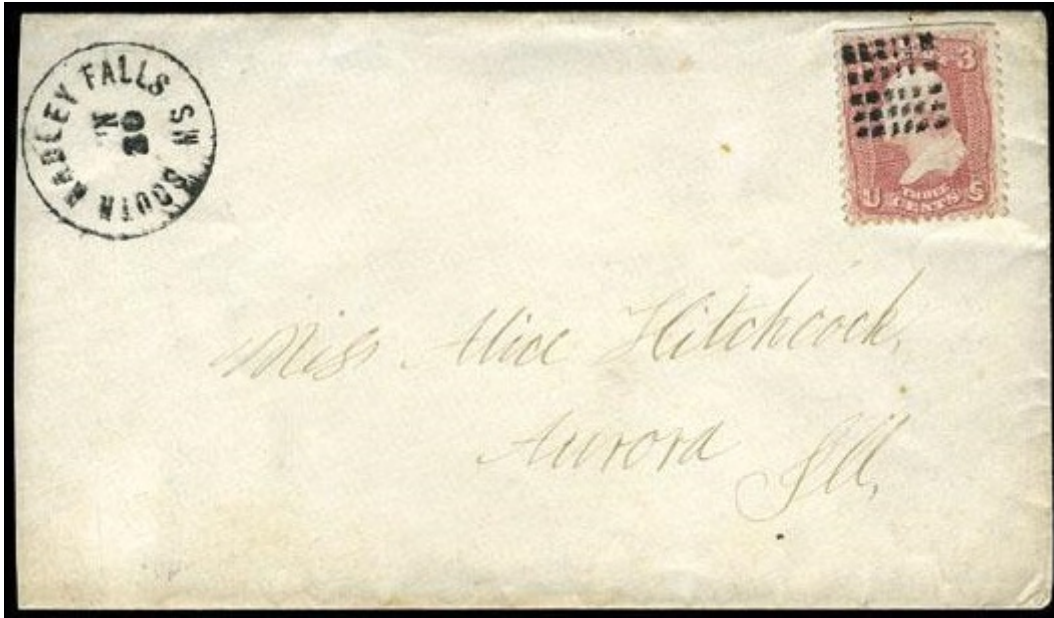
SD-G 96  
Convent, LA 1861



SD-G 96A  
South Hadley Falls, MA  
1861



SD-G 96AA  
[Simpson pg145-235]  
Gilboa, NY



SD-G 96A



SD-G 96A



SD-G 96A

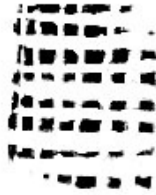
Simple Designs - Grids



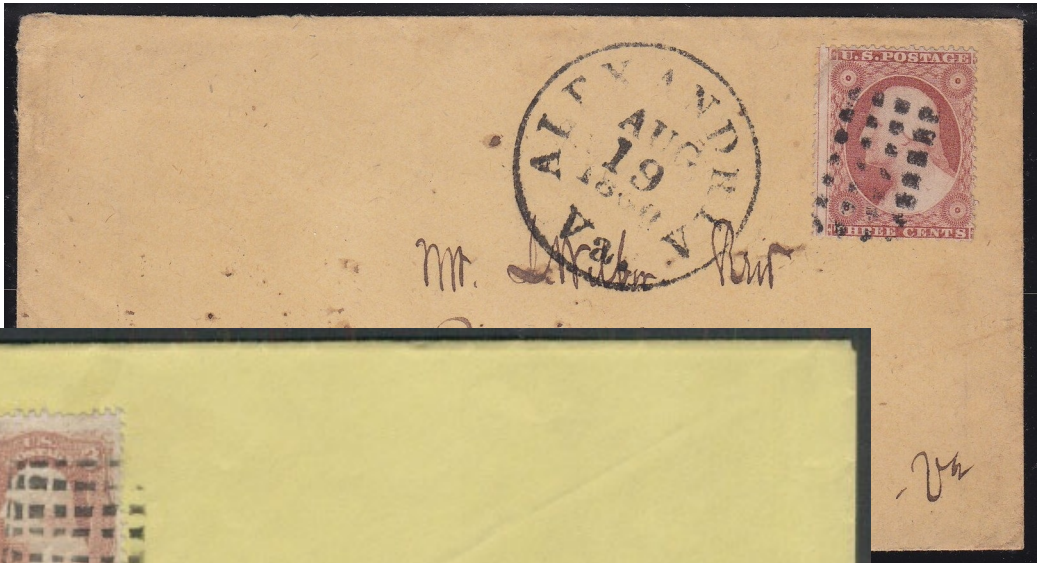
SD-G 96AAA  
1861



SD-G 96B  
[Simpson pg153-328]  
Alexandria, VA 8/19/1860



SD-G 96BB  
Lee, MA 1861



SD-G 96B

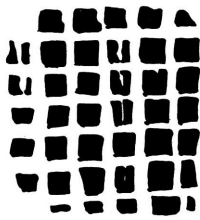
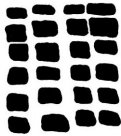
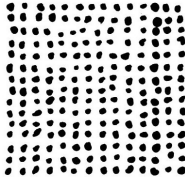



SD-G 96BB



SD-G 96BB

Simple Designs - Grids

 <p><b>SD-G 96C</b> [Simpson pg137-125] Leicester, MA</p>	 <p><b>SD-G 96D</b> [Simpson pg139-153] Worcester, MA</p>	 <p><b>SD-G 96E</b> [Simpson pg141-164] Mount Clemens, MI <input type="checkbox"/> 1861</p>	 <p><b>SD-G 96F blue</b> [Simpson pg129-14] Marysville, CA <input type="checkbox"/> 1851</p>	
--	--	--	--	--



SD-G 96F

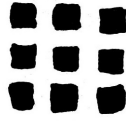


SD-G 96F

Simple Designs - Grids



SD-G 96G blue  
Marysville, CA □ 1851



SD-G 97  
New York, NY □ 1861



SD-G 96G



SD-G 96G

Simple Designs - Grids

<p><b>SD-G 97</b> New York, NY □ 1867(?)</p>			



SD-G 97



SD-G 97

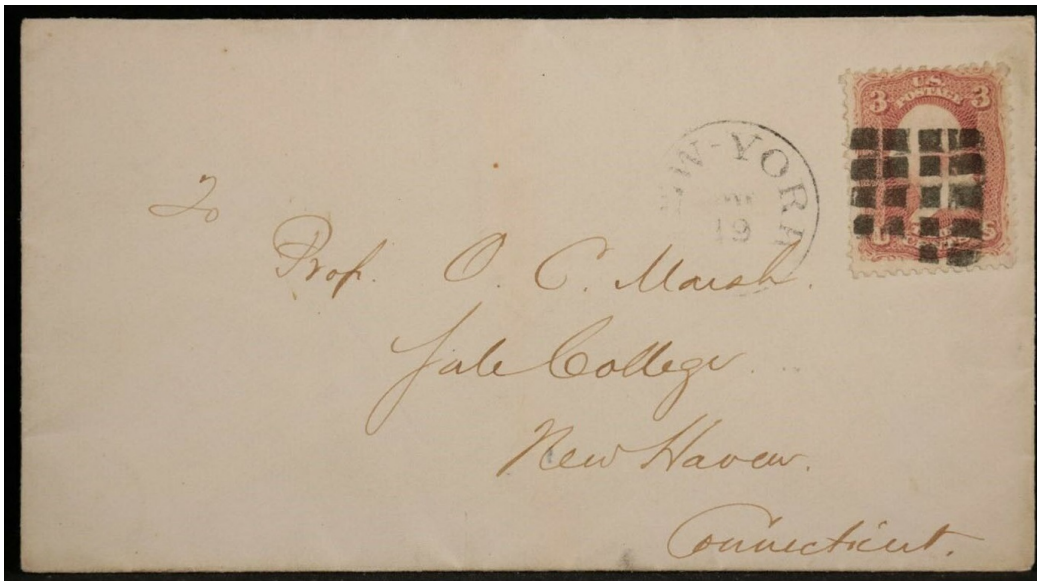
<p><b>SD-G 97B</b> 1857</p>	<p><b>SD-G 97BA</b> East Brookfield, MA □ 1861</p>	<p><b>SD-G 97BB</b> New York, NY □ 1861</p>	<p><b>SD-G 97BC</b> San Francisco, CA □ 5/1870</p>	<p><b>SD-G 97C</b> [Simpson pg147-242] Lyons, NY</p>



Simple Designs - Grids



SD-G 97BA

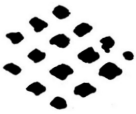
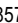

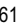




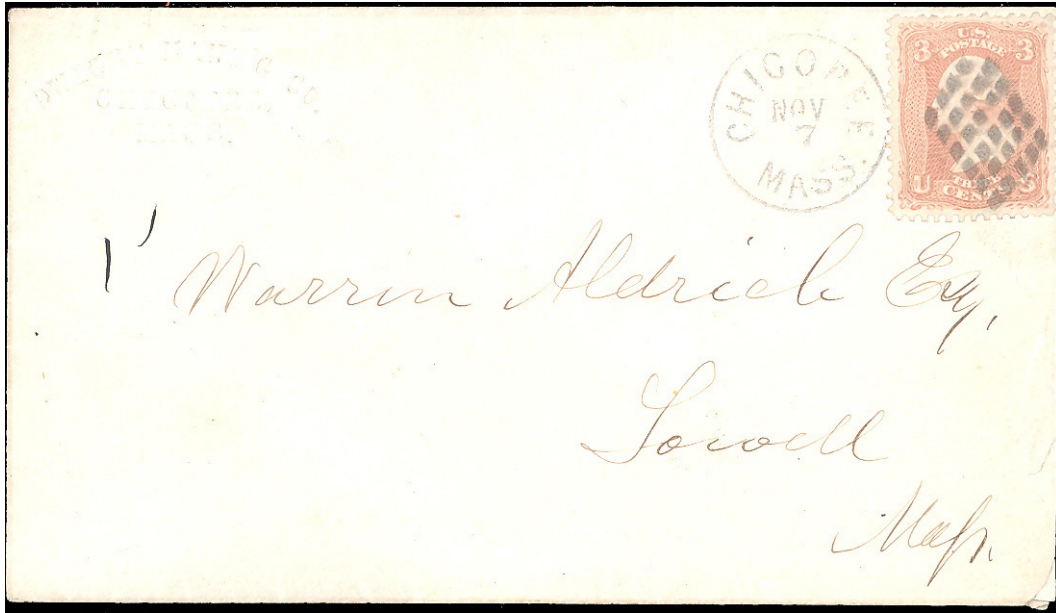
SD-G 97BB



SD-G 97BC

Simple Designs - Grids

 <p><b>SD-G 98</b> Wasioja, MN  1857</p>	 <p><b>SD-G 98A</b> Chicopee, MA  1861</p>	 <p><b>SD-G 98B</b> Fiddletown, CA  3/27/1868</p>		
--	--	---	--	--

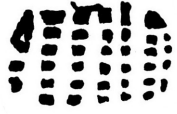


SD-G 98A

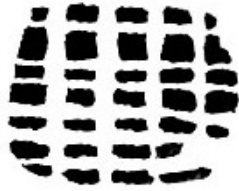


SD-G 98B

Simple Designs - Grids



SD-G 99  
Westchester, PA 1861



SD-G 99A  
Lee, MA 3/25/1868



SD-G 100  
1867



"7" in grid

SD-G 101  
1861



SD-G 99A

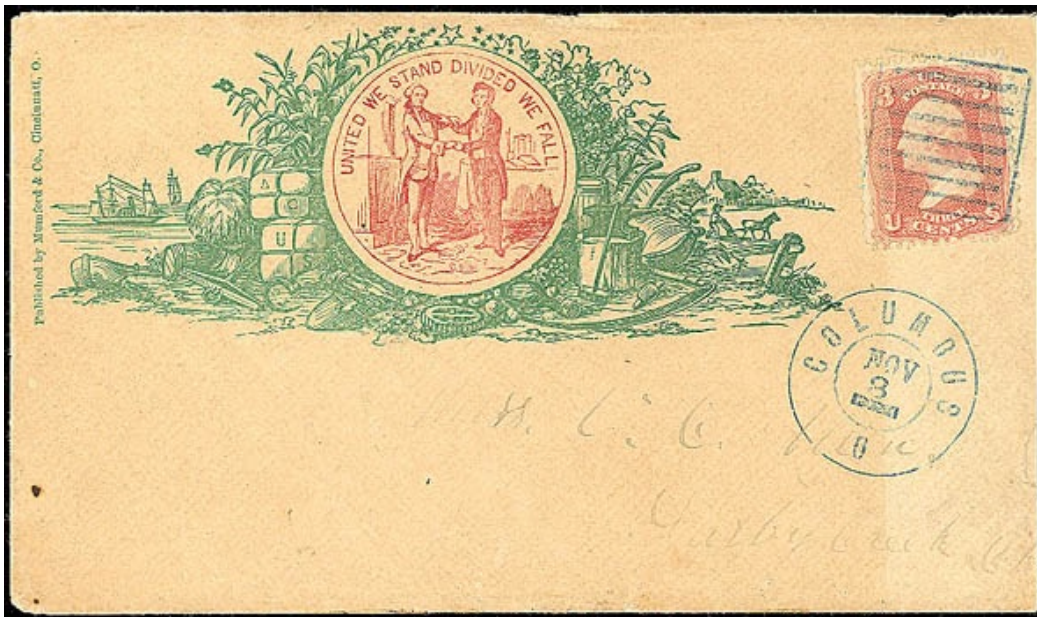
Simple Designs - Grids



"prison bars"



SD-G 102 blue, green, black [Simpson pg149-273; USCC 3962]  
Columbus, OH ■ 1851-8/20/1861-10/1/1862-1870s



SD-G 102



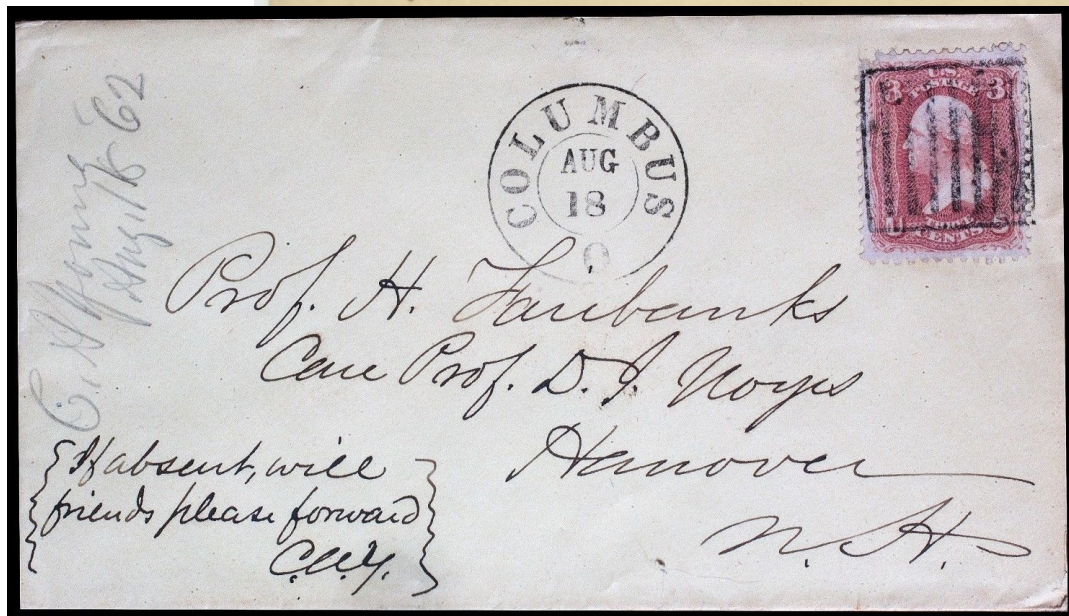
SD-G 102



SD-G 102



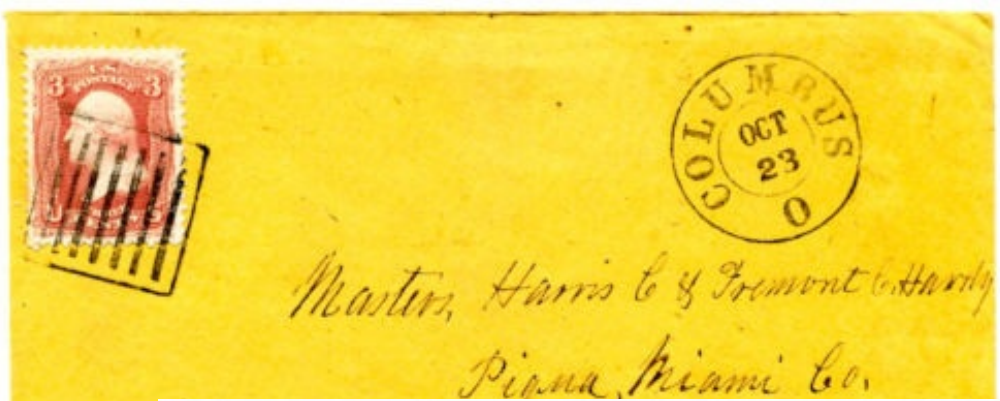
SD-G 102



SD-G 102



SD-G 102



SD-G 102



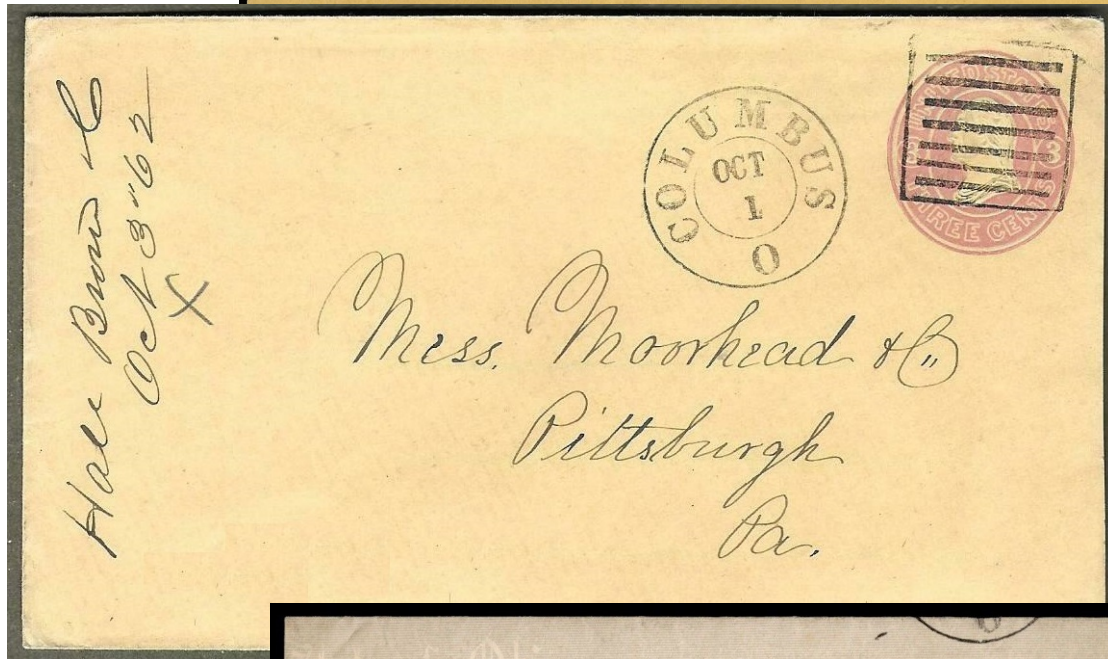
SD-G 102



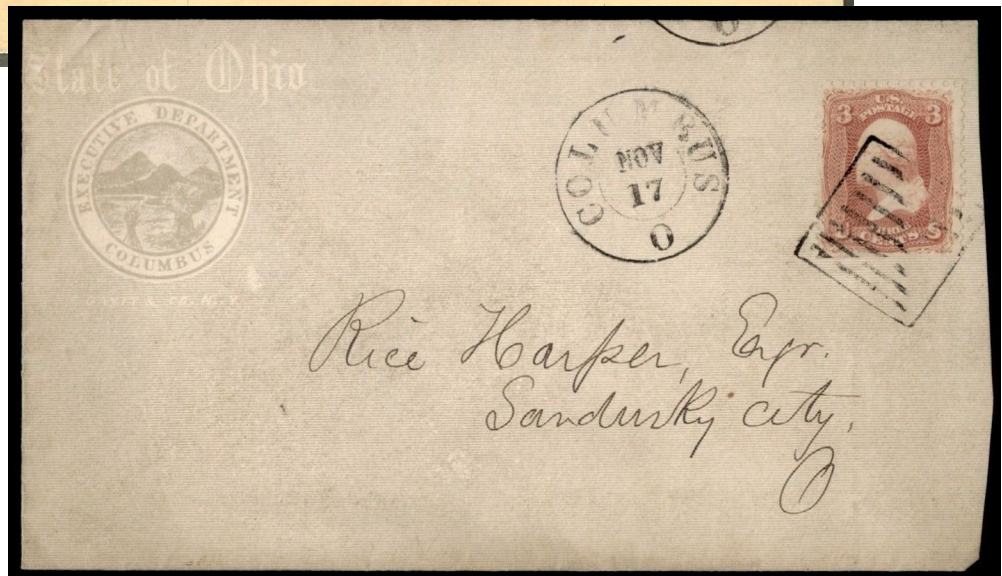
SD-G 102



SD-G 102



SD-G 102



SD-G 102

Simple Designs - Grids



SD-G 103  
Rensselaerville, NY 1861



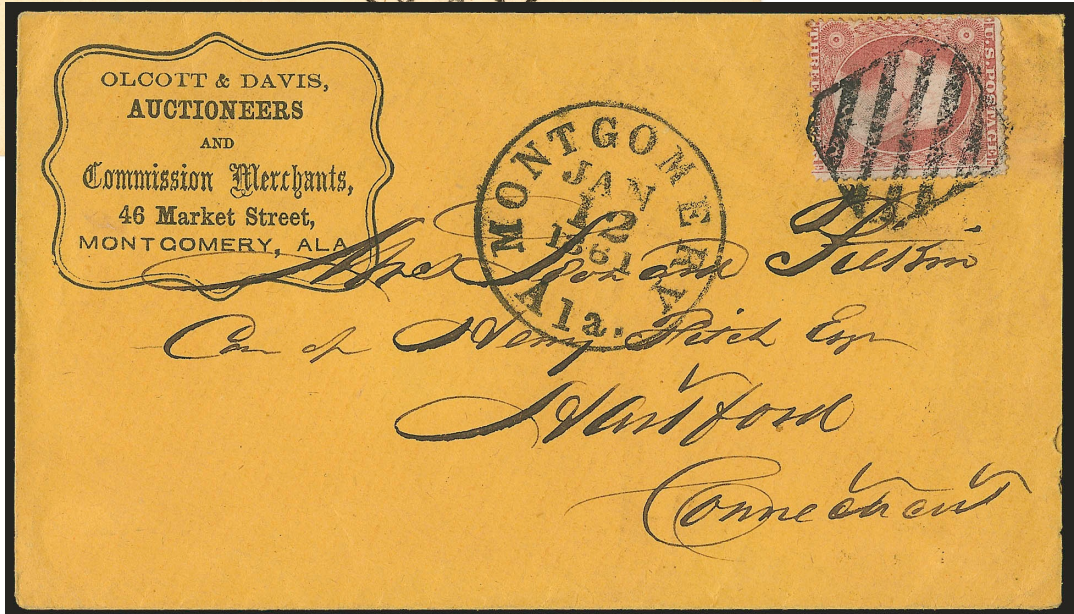
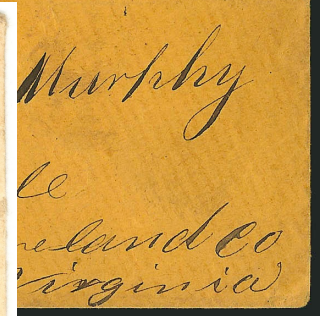
SD-G 104 [Simpson pg129-1]  
Montgomery, AL □ 01/17/1860-1/12/1861



SD-G 104



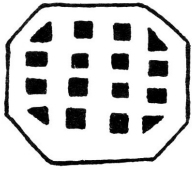
SD-G 104



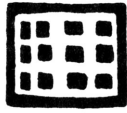
SD-G 104



Simple Designs - Grids



SD-G 105  
1861



SD-G 106  
Shirleysburg, PA [ ] 1857



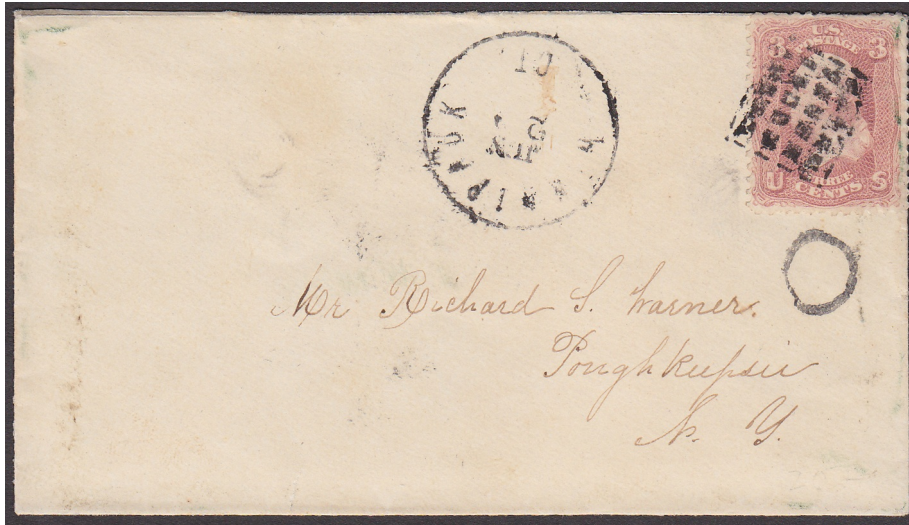
worn device?  
SD-G 106a  
[Simpson pg149-302]  
Shirleysburg, PA



SD-G 107  
Fairfax C.H., VA [ ] 1861

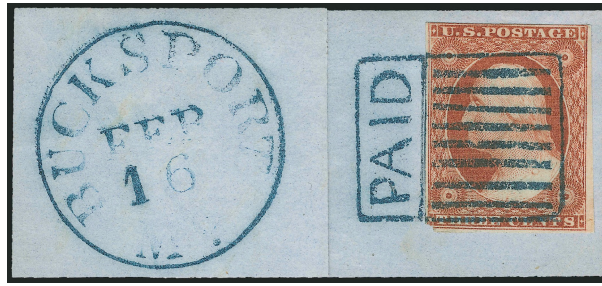


SD-G 107A  
Winnipauk, CT [ ] 1861

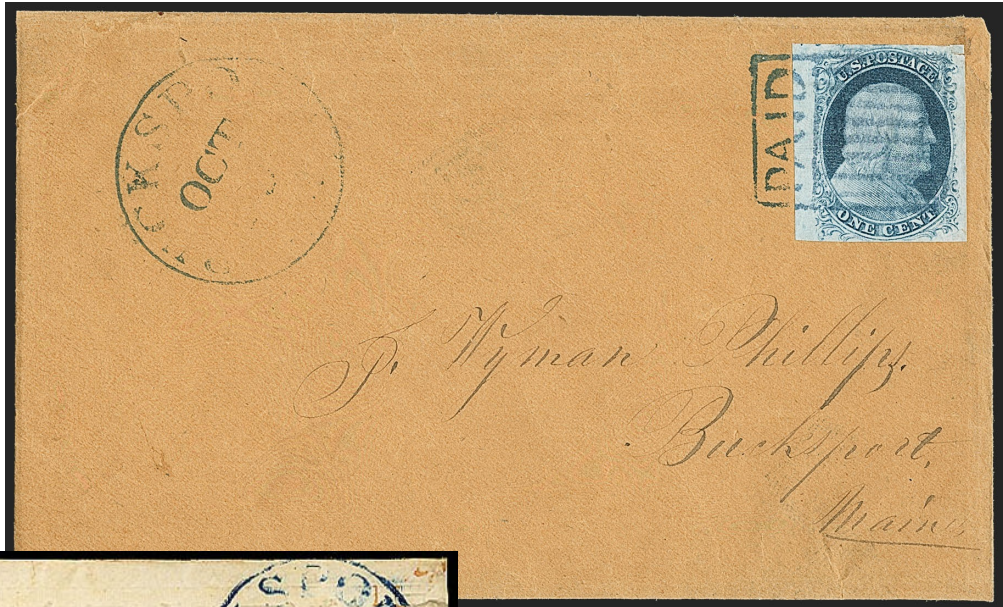


SD-G 107A

Simple Designs - Grids



SD-G 108 blue [USCC 6614; Simpson pg113-13]  
Bucksport, ME [1/13/1852(?) - 11/6/1852(?)]



SD-G 108



SD-G 108



SD-G 108

SD-G 108



SD-G 108



SD-G 108

SD-G 108





SD-G 108



SD-G 108



SD-G 108



SD-G 108

Simple Designs - Grids



SD-G 109  
Worcester, MA [ ] 1861



SD-G 110 blue  
St. Louis, MO(?) 1861



SD-G 111  
Niverville, NY [ ] 1861



SD-G 112  
Cambridgeport, MA [ ] 7/21/1865



compare with GE-E 9



SD-G 113 [Simpson pg145-226]  
Carlisle, NY [ ] 1851



SD-G 112

Simple Designs - Grids



SD-G 114  
Watkins, NY 1861-69



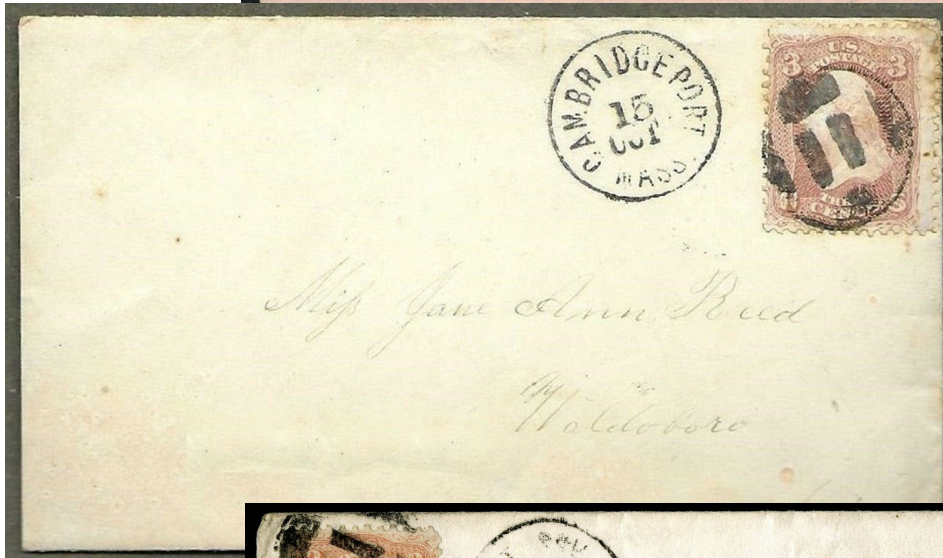
SD-G 115  
Watkins, NY 1869



SD-G 116  
Cambridgeport, MA 1861



SD-G 116



SD-G 116



SD-G 116

Simple Designs - Grids

 <p>Worn state</p> <p><b>SD-G 117</b> Sterling, MA □ 1857-1861</p>	 <p><b>SD-G 121</b> [USCC 2313] Farmers Station, OH □ 1861</p>	 <p><b>SD-G 121A</b> [Simpson pg149-275] Farmers Station, OH □ 1861</p>	 <p><b>SD-G 122</b> blue, black Davenport, IA □ 1861</p>
 <p><b>SD-G 123</b> [Simpson pg131-60; USCC 2380] Naperville, IL □ 7/16/1861 [Whitfield states from East Troy, WI]</p>	 <p><b>SD-G 124</b> Boston, MA 1861</p>		



SD-G 123

Simple Designs - Grids



"Herringbone"



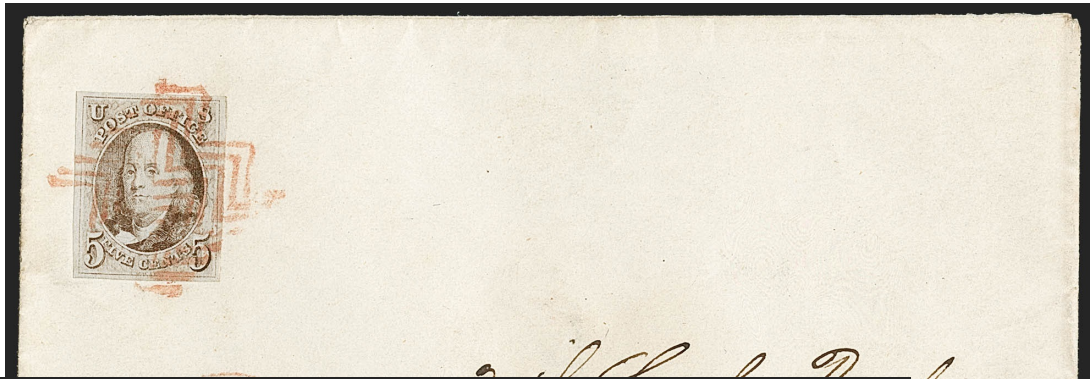
SD-G 125 black, blue, red [USCC 3876]  
Binghamton, NY 11/1-11/20/1848(?)

SD-G 125



SD-G 125

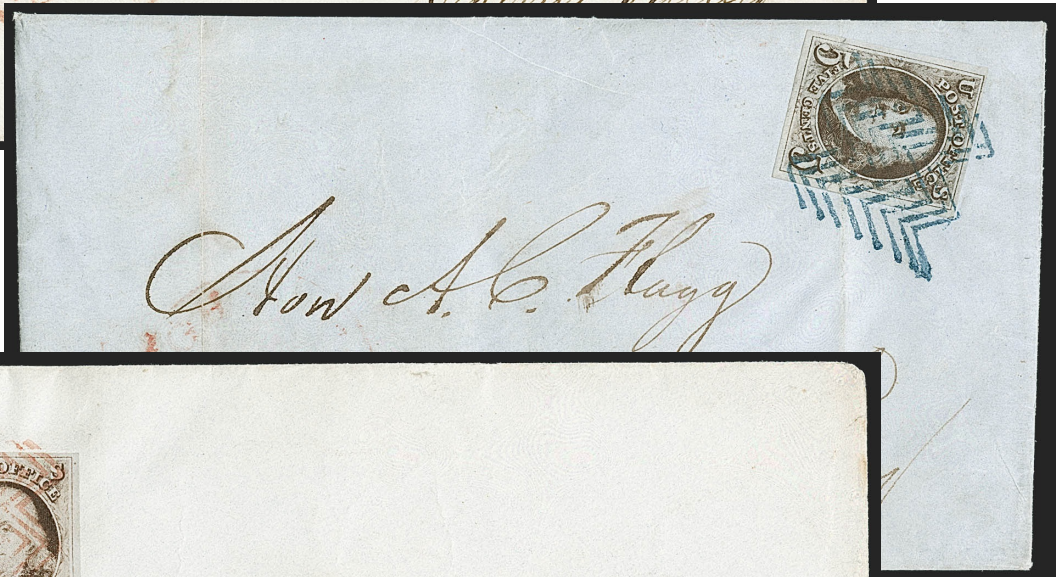




SD-G 125



SD-G 125



SD-G 125



SD-G 125



SD-G 125



SD-G 126  
1861



SD-G 127  
[Simpson pg131-54]  
Henry, IL 1851



SD-G 127A  
New York, NY 6/1867



SD-G 127A

Simple Designs - Grids



**SD-G 128**  
Boston, MA 1867



**SD-G 129**  
1869



**SD-G 128A**  
1863



**SD-G 130**  
1869



**SD-G 131**  
1869



**SD-G 132**  
Salem, MA 1869



**SD-G 133**  
Cambridge, MA(?) 1861



**SD-G 133A**  
[Simpson pg139-134]  
Salem, MA

Simple Designs - Grids



SD-G 134

Plymouth, MA 1/1/1863-6/1/1863



SD-G 134



SD-G 134



SD-G 134



SD-G 134



SD-G 134



**SD-G 136**  
San Buenaventura, CA 1857



**SD-G 136A**  
Middletown, CT 5/1/1867(?)



**SD-G 144**  
Parkersburgh, PA 1867



**SD-G 144A**  
[Simpson pg145-225]  
Cannonsville, NY



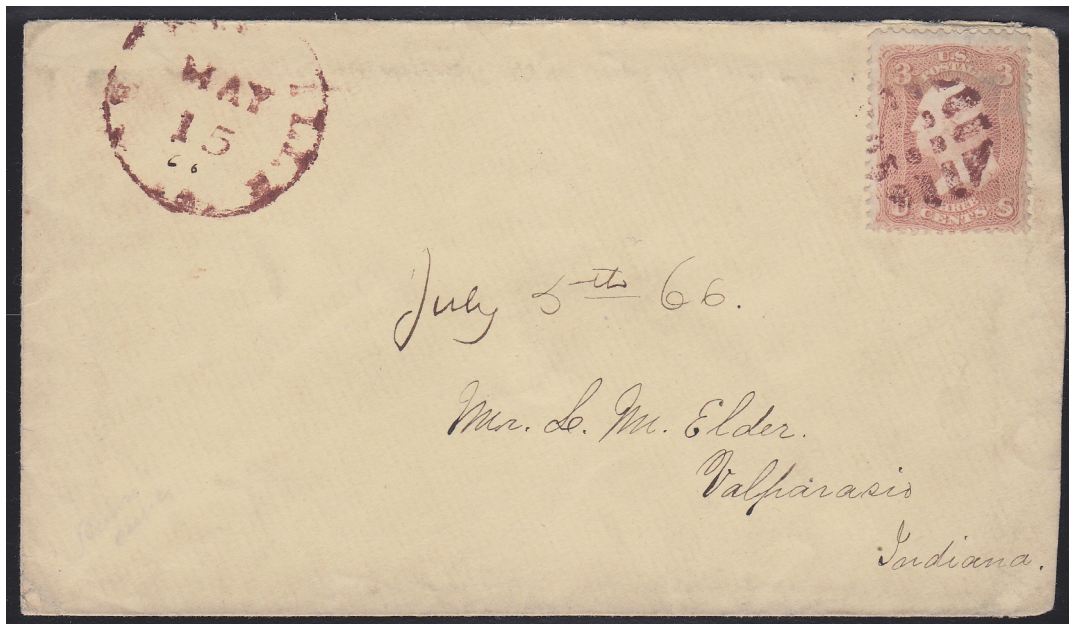
**SD-G 145 red**  
Centerville, IA 5/15/1866(?)



SD-G 136A



SD-G 144



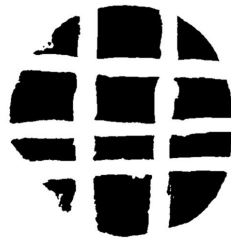
SD-G 145

Simple Designs - Grids

need scan

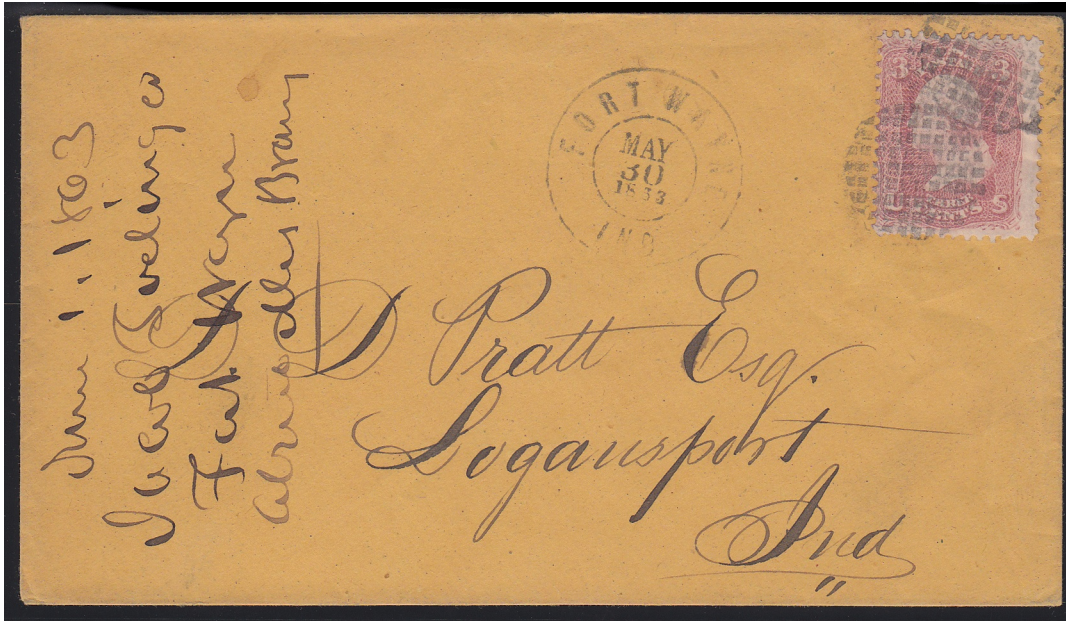


SD-G 147  
Chicago, IL □ 1861



SD-G 148  
New York, NY □ 1861

SD-G 146  
Fort Wayne, IN □ 5/30/1863



SD-146



SD-G 147

Simple Designs - Grids



SD-G 148

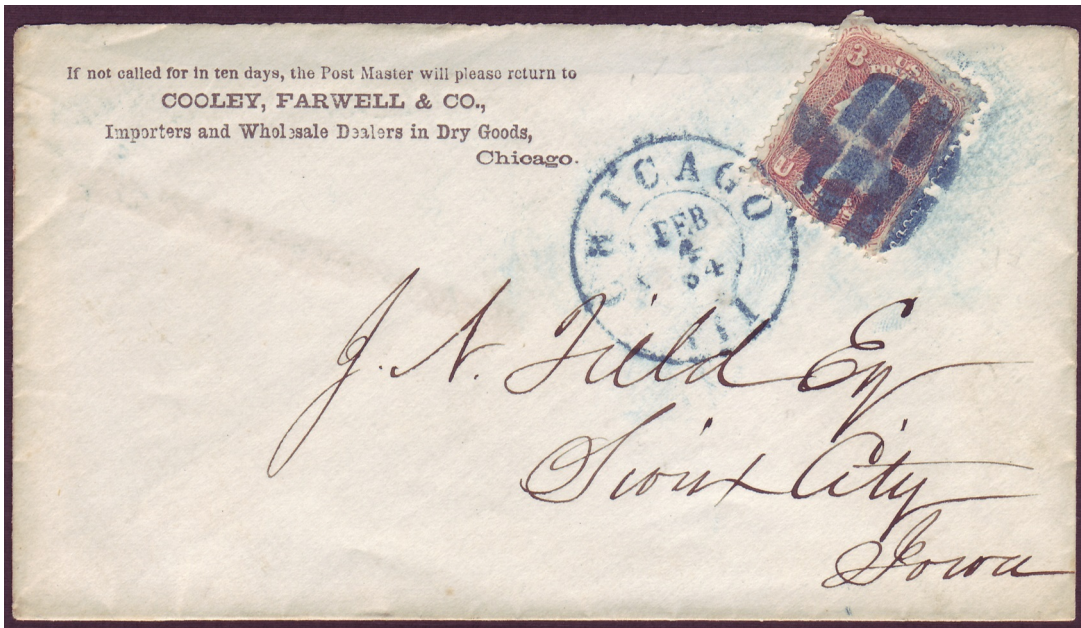
 <p>23-24mm diameter</p> <p><b>SD-G 151</b> blue Chicago, IL <input type="checkbox"/> 12/20/1865</p>	 <p><b>SD-G 153</b> blue Chicago, IL <input type="checkbox"/> 2/4/1864</p>	 <p><b>SD-G 154</b> blue Chicago, IL <input type="checkbox"/> 4/19/1864</p>	 <p>four segments</p> <p><b>SD-G 156</b> New York, NY <input type="checkbox"/> 12/12/1863</p>	 <p><b>SD-G 157</b> Boston, MA <input type="checkbox"/> 1861</p>
---	---	--	---	---

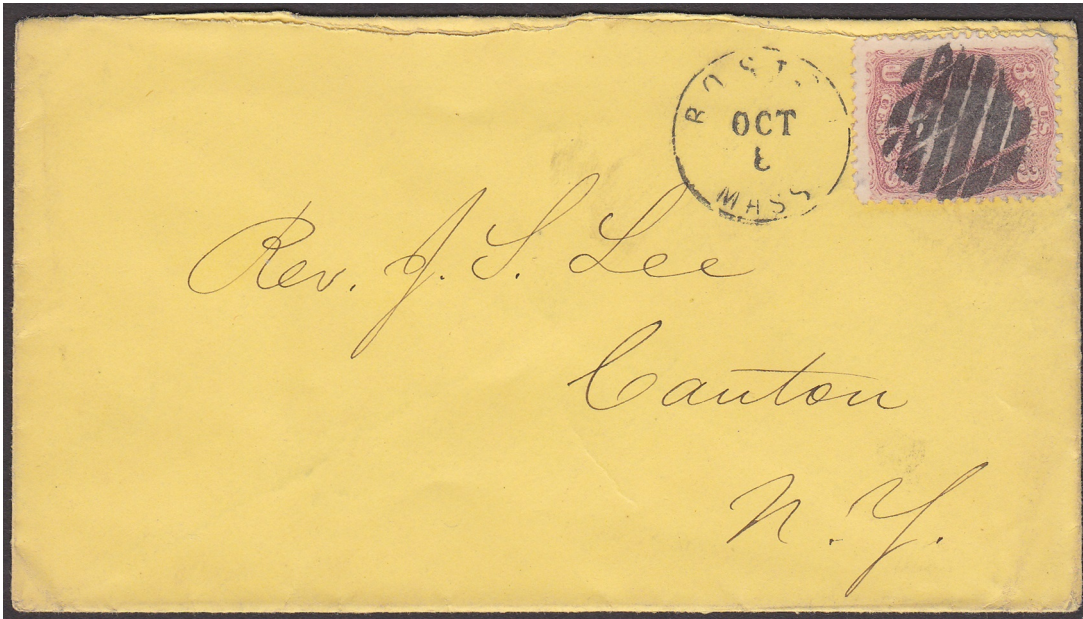


SD-G 151



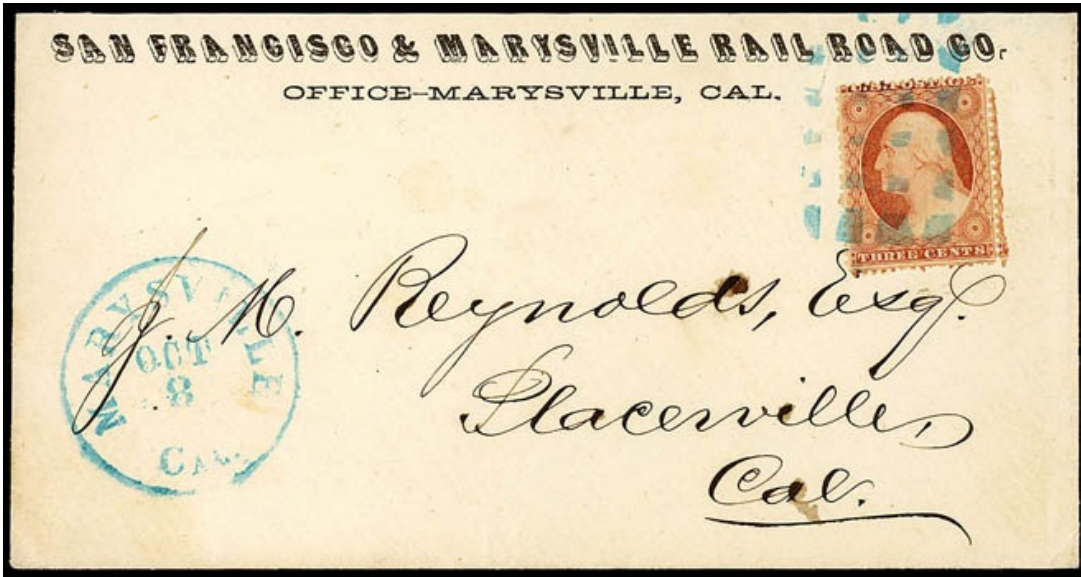
Simple Designs - Grids



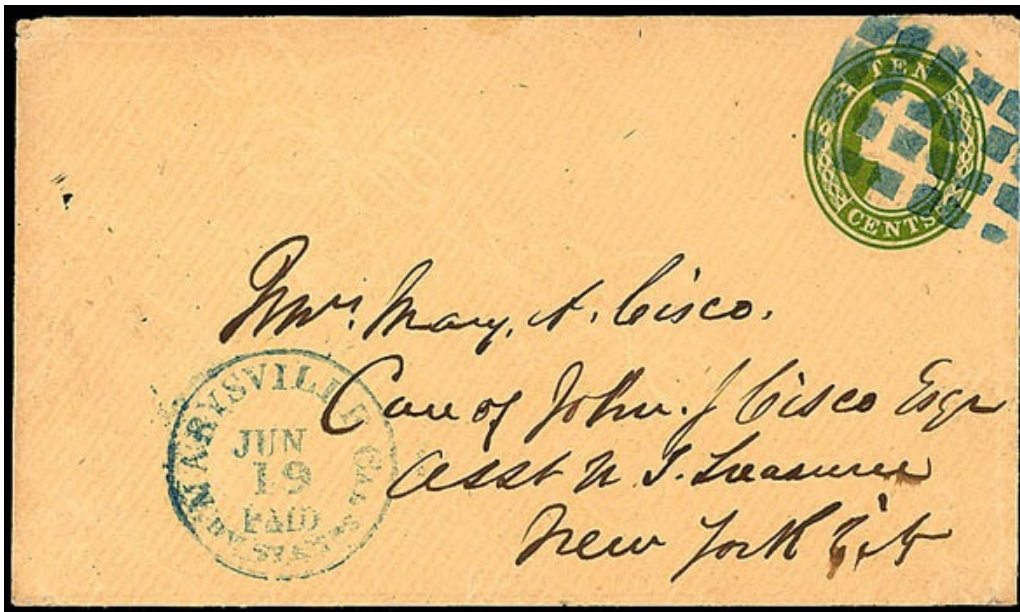


need scan

SD-G 158 blue  
Marysville, CA 95951



SD-G 158

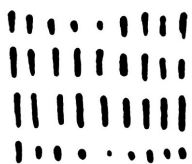


SD-G 158

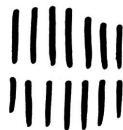
Simple Designs - Grids



SD-G 159 blue [Simpson pg129-15]  
Marysville, CA □ 1851



SD-G 160 [Simpson pg129-20]  
Oroville, CA



SD-G 164  
[Simpson pg139-142]  
West Cambridge, MA

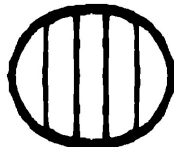


SD-G 166 [Simpson pg147-244]  
Moscow, NY

Simple Designs - Grids



SD-G 198  
1857



four lines



SD-G 204 blue  
1861



SD-G 205  
1861



SD-G 205A  
Napa City, CA 1861



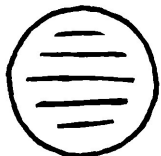
three lines



SD-G 206  
1861



SD-G 205A



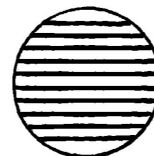
five bars

SD-G 207  
Pultney, NY 1861



ten bars

SD-G 208  
1861



ten lines

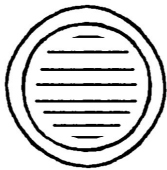
SD-G 209  
1861



Simple Designs - Grids



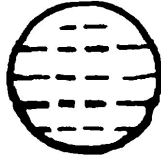
SD-G 207



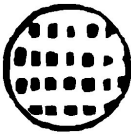
eight bars



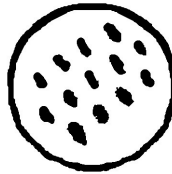
SD-G 210  
1861



SD-G 211  
1861



SD-G 212  
1861



SD-G 213  
1861



SD-G 219  
Baltimore, MD  
□ 3/13/1868(?)







SD-G 220  
Hampton, NH □ 1861



Simple Designs - Grids

 <p>thirteen bars</p> <p><b>SD-G 226</b> New York, NY □ 1861</p>	 <p><b>SD-G 227</b> [Simpson pg145-228] Chittenango, NY</p>	 <p>six bars</p> <p><b>SD-G 228</b> [Simpson pg145-213] Albany, NY</p>	 <p><b>SD-G 229</b> [Simpson pg147-250] Painted Post, NY</p>	 <p>thirteen bars</p> <p><b>SD-G 230</b> [Simpson pg147-258] South Livonia, NY</p>
---	--	---	--	---



 <p><b>SD-G 231</b> [Simpson pg149-270] Bloomingburgh, OH □ 1857</p>	 <p><b>SD-G 232</b> [Simpson pg149-287] Westville, OH</p>	 <p>eleven bars</p> <p><b>SD-G 233</b> [Simpson pg151-309] Elizabethton, TN</p>	 <p>ten bars</p> <p><b>SD-G 234</b> [Simpson pg153-334] Richmond, VA</p>
---	--	---	---





SD-G 231



**SD-G 235**  
[Simpson pg139-141]  
Stockbridge, MA



**SD-G 236**  
[Simpson pg139-156]  
Worcester, MA



**SD-G 237**  
[Simpson pg139-155]  
Worcester, MA



updated January 30, 2023 (1:52pm)