

1869 TIMES

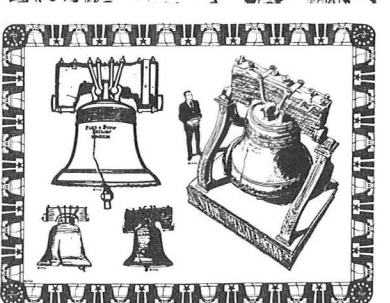
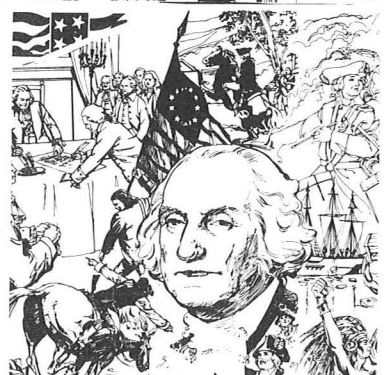
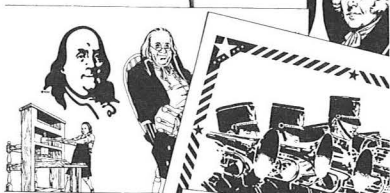
1869 PICTORIAL RESEARCH ASSOCIATES

EDITOR: B. E. CHAPMAN, 5099 STEUBEN DR., MEMPHIS, TENN. 38134

Vol. 2, No. 1

August 1976

Whole No. 4



Dear Associates,

Our first Annual Meeting at Interphil was a fantastic success! There were over 50 members in attendance along with several visitors. Many new Associates were signed up after the meeting and the long-awaited Interphil Publication was distributed to those attending.

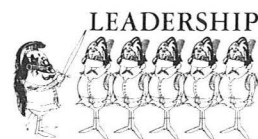
The first copy of the PRA Book was presented to Lois Evans, Librarian of the APS Philatelic Research Library at State College, Pennsylvania by Benjamin E. Chapman, Editor. Ten additional philatelic libraries were the recipient of PRA Books by mail during July: Collectors Club of New York, Collectors Club of Chicago, The Philatelic Foundation, The Royal Philatelic Society of London, Western Postal History Museum (Tucson), Collectors Club of Seattle, Carnegie Museum, Baltimore Philatelic Society, Friends of the Western Philatelic Library, St. Petersburg (Fla.) Stamp Club.

Officers were elected at the meeting and I am pleased to report the following Associates will be donating their time and talents to our PRA for the upcoming year:

President - Margaret I. Wunsch
Vice President - J. C. M. Cryer
Secretary - Donald E. Haller
Treasurer - Rex H. (Jim) Stever
Director - Michael Laurence
Director - John Birkinbine, II

Director and Editor - Benjamin E. Chapman

Johathan W. Rose agreed to serve as an Associate Editor for the Annual Book.



It might be well to point out at this time that sales of the 1976 Interphil Book have been far in excess of our expectations and as of July 20 we were All Sold Out. Yep, many bought second copies realizing there was a short press run (a few over 200) and the kind words for the PRA in the philatelic press did the rest. This book is destined to be a major reference source for years to come and shortly the public auction will determine a fair market value. Congratulations, you got in on the "ground floor." Your Editor understands there are a few copies in the hands of dealers (maybe 10) and will assist those interested in obtaining a copy.

Also at Interphil there were two outstanding 1869 exhibits. These were the work of Margaret I. Wunsch and J. C. M. Cryer. They were side-by-side, and I know I spent 4 hours looking at each of them. Every page, every cover and variety were top-flight. Margaret won an Interphil Gold Medal while Jim came up with a Vermeil. Thank you for sharing these philatelic gems with us and our well-deserved kudos to you both.

Now to news of an organizational nature. Most of the PRA Directors and Officers met together for a planning session on July 17 (for 4 hours yet) and decided on many items of interest to all. Most importantly, Annual Dues of \$15.00 were established for the 1976-1977 year. This will be paid by all Associates and will go towards the publication of the quarterly newsletter "1869 Times" (which will be greatly enlarged) as well as the Annual Book. One-time \$2 initiation fee will be retained. Our fiscal year will be from July 1 to June 30. Authors who have articles accepted for publication in the Annual will receive an additional copy of that work as an incentive for writing. This slight increase in dues will allow the newsletter (which is turning out to be a major research communications link) to be funded from the Treasury, without having to rely on members contributions. Thus, 1976-77 annual dues are now payable and should be sent to Donald E. Haller right away. Please use the clip-out section to be found in another spot in this "Times." Associates who have not sent in their \$15 dues by October 31 will have to be dropped from the membership.

It is not too soon to begin thinking of an article you could write for the next Annual. (By the way, the name "THE RECORD" has been proposed for this publication. It is quite a fitting title, and unless there is serious opposition your Editor would like to adopt it.) At any rate, the lead time for the Annual is considerable, and again, the December 31 (1976) deadline will be observed. All authors should contact me as soon as possible so we may begin working in concert to make our second edition as good, and hopefully better, than #1. Invitation is hereby presented to all to consider writing about that special area where you have information which the rest of us should be knowledgeable in. Please complete the article data on the clip-out.

The Stamp Agent's Ledger Sheets: Part II

by Michael Laurence

In the May 1976 issue of this newsletter we reproduced the stamp agent's ledger sheet for the week ending June 12, 1869. We publish here the ledger sheet for the following week, ending June 19, and commence an explanation of what this information means.

Note first the printed lines at the top of the ledger. They indicate that strict control was kept over the quantity of blank sheets of stamp paper that the stamp agent turned over to the printer each week. Presumably, an opening inventory of paper was turned over to the National Bank Note Company, which they thereafter had to account for weekly, either by returning finished stamps or blank sheets.

Each of the five ledger sheets of which we have record is headed "National Bank Note Company. / Statement of Stamps at Manufactory, for week ending _____ 18 ____" with the dates filling in the appropriate blanks. The books were ordinarily closed on Saturdays, at the end of the work week. This was 1869, after all, when artisans and even gentlemen worked all but the Sabbath.

In the 1976 PRA book distributed at INTERPHIL we reprinted a contemporary report on how the 1869 stamps were made. This report mentioned a "thorough" and "searching" security system, and the stamp agent's ledger sheets give us some insights into how this security was actually achieved. Three printed lines, just beneath the headings quoted contain the following information:

Sheets of paper delivered to printers during week _____
Sheets of paper returned printed during week _____ = stamps _____
Sheets of paper returned blank _____

For all five weeks at hand, the number of sheets given the printers during the week is precisely equal to the total of blank and printed sheets returned and accounted for at the end of the week. As an example, for the week ending June 12, 1869 (reprinted in May "Times"), 48,400 blank sheets were given to the printers; and at the close of the week, they returned 48,100 printed sheets and 300 blank sheets. The 48,100 printed sheets were extended (see second line above) and expressed in terms of stamps: 13,310,000. Long division reveals that this is the equivalent of 276+ stamps per sheet, suggesting that the figures for this week include mostly sheets of 300 (the low value stamps) but also some sheets of 100, representing the bi-colored high values. (The method by which the blank sheets of paper were accounted for suggests that all the sheets were the same size. If this were the case, then each sheet of blank paper, when severed in half, could yield two sheets of the bi-colored denominations. This is a subject to which we will later return.)

For the week ending June 19, 1869, (reprinted herewith) 41,400 blank sheets were turned over to the printers, and 39,600 printed sheets (plus 1800 blanks) were returned at the end of the week. The total stamps for that week was 10,840,000, an average of 273+ stamps per sheet, once again suggesting that the bulk of the sheets comprising the accounting were low-value sheets of 300, but that some bi-colored sheets of 100 were also included.

We then skip almost half a year, to the week ending December 18, 1869. (The reader will have to trust us about these statistics, until the remaining ledger sheets are published in subsequent issues of this newsletter.) For the week ending December 18, 37,500 blank sheets were delivered during the week, and 37,500 printed sheets were returned, for a total of 11,250,000 stamps. Division here yields a total of precisely 300 stamps per sheet. Clearly, no bi-colored values were included in the statistics for this week; nor, in fact, are they included in the two following weeks. The week ending December 24 shows 38,600 blank sheets, 38,600 printed sheets returned, for a total of 11,580,000 stamps, precisely 300 stamps to the sheet. And the week ending December 31 shows 29,900 sheets turned over to the printer, 29,800 returned printed, 100 returned blank. The 29,800 printed sheets is expressed as the equivalent of 8,940,000 stamps, and this once again is precisely 300 stamps per sheet.

Thus, given the information about paper alone, we can reasonably conclude that no bi-colored 1869 stamps were printed during the last three weeks of 1869. Other evidence indicates none were printed thereafter. In fact, the weight of evidence is that for all except the low-value 1869 stamps, the entire print run was finished by November.

We can also conclude, from the evidence of the heading lines of the stamp agent's ledger sheets, that the paper on which the stamps were printed was used as a security device. The printer was given an inventory of paper, after which, every week, his deliveries of finished goods had to match the replenishment of his paper stock. However, it should not be assumed that the aggregate weekly paper control figures, as expressed in this bookkeeping device, specifically express stamps that were actually printed that week. In some cases, the stamps took more than a week to print. For the individual denominations, entirely different accounting procedures were needed, and these too were recorded on the weekly ledger sheets, in the columns for the individual stamp denominations. These we will begin to discuss in the next issue of the "Times." (Please see illustration on page 3.) **

- + + Be sure to send in your 1976-77 PRA annual dues to continue receiving the "Times" and get a copy of the '77 annual publication next spring. Authors should submit articles to your Editor as soon as possible (Dec. 31, 1976 deadline). Manuscripts are also solicited for this newsletter. Write! What additional information do you have concerning the articles in the
- + + INTERPHIL publication? We would all benefit from your participation.



The Stamp Agent's Ledger Sheet for June 19, 1869 (Cont. from Pg. 2)

National Bank Note Company.

Statement of Stamps at Manufactory, for Week ending June 19 1869

Sheets of Paper delivered to Printers during Week 41400
 Do. do. returned Printed " " 39600 = Stamps 10,820,000
 Do. do. do. Blank 1800

Denomination.	STAMPS FINISHED.				STAMPS UNFINISHED.			
	Balance in Safe from last week.	Deposited in Safe during week.	Spoiled during week.	Delivered to Post-Offices during week.	Balance on hand this day.	Balance in Safe from last week.	Deposited in Safe during week.	Balance on hand this day.
1	2,862,000			141,500	2,722,500			
2	9,077,900			373,750	8,704,150	3,180,000	300,000	3,480,000
3	7,950,000	3,200,550	89,450	3,929,500	7,227,050	20,700,000	10,020,000	27,480,000
6	1,294,250	1,959,000	21,000	54,750	3,198,500	1,980,000		
10	1,053,250				1,053,250			
12	429,875			23,225	408,650			
15	4840				4840	870,000	160,000	970,000
24	44,750				44,750	710,000	280,000	990,000
30	58,540				58,540			
90	34,570				34,570		80,000	80,000
Aggregate.	22,815,975	5,159,550	110,450	4,522,725	23,452,800	27,380,000	10,840,000	33,000,000
					PERIODICAL	STAMPS.		
5	476,570							
10	278,770							
25	157,080							
Aggregate.	912,420							

Chas. J. Smith

On a personal count I find the above statement to be correct
D. M. Boyd
 agb

Margaret L. Wunsch Elected First PRA President



Shown at left is a photo of Margaret Wunsch taken in Honolulu when she was awarded the APS "Champion of Champions" trophy in 1970 for her outstanding exhibit of the U.S. 1869 issue.

Margaret has long been a proponent of the 1869 issue and has done as much as anyone to promote the benefits to be gained through study of the pictorials. It is therefore quite fitting that she has been elected to serve as our first President. Her first message to the membership is found below:

Fellow Associates,

What an exciting meeting the 1869 Pictorial Research Associates had during Interphil '76. We had over 50 of our membership attending. Outstanding progress was made in our first year with the initiation of our newsletter "1869 Times", growth in membership from seven to 115 and finally with the publication of our first Annual Book.

At the meeting all efforts of the Founding working members were acknowledged and a special vote of thanks and appreciation was given to Ben Chapman for his dedicated efforts as Editor of both the "Times" and the Research Publication. Jim Cryer was given a standing ovation for his efforts in personally financing and mailing each edition of the "Times."

When I accepted the office of President, I was aware of the challenge it represented and the confidence and esteem you manifested in electing me to this office. I shall endeavor to fulfill the trust you have placed in my hands and perform my duties faithfully. I pledge my support to every member. This I shall do with pleasure and a deep sense of responsibility.

Our first Executive Board meeting was held in the home of Mr. and Mrs. J.C.M. Cryer in Port Lavaca, Texas on July 17, 1976. They are the couple who perpetuates "Friendship Through Philately." When the roll of the Executive Board was called, I sat in awe knowing how genuinely interested and knowledgeable your elected board are. We are most fortunate to have them guide our 1869 Pictorial Research Associates. The Constitution and By-Laws were adopted and will be published in the next "Times."

I am pleased to announce that the "1869 Times" will be issued quarterly. It is anticipated that through this media the authors of articles will be given the opportunity to announce their subjects asking that the membership share knowledge, so that when the articles are ready for publication they will contain pertinent up-to-date information.

It is through co-operation, vision and action that success is accomplished. Please, I ask each of you to share responsibility with your membership in the PRA. Together we will gain knowledge and inspiration. I am looking forward to a great year and a good report for our Annual Meeting in 1977 during WESTPEX in San Francisco, California (April 15-17).

----- John Birkinbine recently related an anecdote about Margaret worth repeating here. He says that great things are happening to PRA members, and particularly Margaret. Since her election in Philadelphia as our President, she was seen 6 weeks later riding into Port Lavaca within a chauffeur-driven Cadillac limousine, courtesy of one of our new members (Brad Horton). Who says that specializing in the 1869 issue doesn't have its rewards?



1869 Exhibits at TEXANEX Receive Awards

Congratulations go to Jim Cryer and Jim Stever, who both came up with awards for their 1869 exhibits at the San Antonio (TPA) show June 18-20, 1976. Jim Stever won the Novice Award as well as a Silver for his showing of the 3c 1869 I locomotive. He is one of several with specialized interests in the 3c and this, his first try at exhibiting apparently really railroaded the Judges. Jim Cryer received a Gold for his excellent 1869 showing, which covers all facets of 1869 collecting. He was heard to have remarked that this exhibit will be "retired" from competitive exhibitions shortly.

- oOo -

Mild Apology. The mailing of the Annual Book was a little later than originally planned. Our organization being new, this eventuality simply was not planned for adequately. At the last minute, John Birkinbine volunteered to perform this thankless task. Sorry for the delay, but all books should have been received by this time.

Address Changes. A thing of primary importance. Please send them to Don Haller, Secretary if you move. Pages 9 & 10 contain the latest membership list. Plenty of room in the margin for notes on collecting interests. Only 2 changes of address noted: # 15 & #85. We need an address for #59 -- John, where are you? The "Times" is offering one year paid-up dues for the member who recruits & proposes the most new members this year.



AUCTION ACTION -- I like a duel, except you don't know the opponent.

The Sidney A. Hessel 1869 Sale

by Michael C. O'Reilly

This quarter, the Auction Action devotes its attention to the recent sale of one of the stronger holdings of 1869 material to be auctioned during the last decade. This sale, held by H. R. Harmer on June 10, was part of the larger collection of Sidney A. Hessel. While the late Mr. Hessel had other collecting interests, the 1869 issue was certainly a primary consideration in his collecting habits. This sale has been eagerly awaited since it was announced last year and, we hope, was well attended by 1869 specialists. Our thanks to Michael Laurence for his on-the-spot coverage and subsequent review which was placed at our disposal. Thus, much of the background material presented herein is Mr. Laurence's homework, not ours.

It is understandable that much of the material from the Hessel sale had not been seen by the current generation of philatelists when one considers that much, if not all of the collection was assembled by Mr. Hessel's father. According to a Harmer employee who broke down the collection for write-up, the material was accompanied by invoices dating back to 1899.

Prices varied, as they always do, according to condition. Generally speaking, proof items and covers fetched the highest prices relative to current catalog while singles ranged widely according to condition and cancellation. Multiples sold quite reasonably. A full set of large die proofs sold individually at about 2/3 Scott, excepting a 24c hybrid (lot 594), which sold for \$1050 (versus catalog of \$550) and a 90c hybrid (lot 596), which fetched \$1550 (\$600). A full set of small die proofs brought \$2000, against a catalog value of \$1555.

Plate proof multiples, showing imprint and plate number generally exceeded catalog. A 3c plate block of 14 (lot 599) fetched \$1000 (\$760); a 6c plate block of 10 (lot 601) realized \$1200 (\$700); a 10c plate block of 10 (lot 602) sold for \$1800 (\$700); and a 90c plate block of 10 (lot 608) reached \$2900 (\$1575). Proof multiples lacking imprints were less favored. A 12c block of 40 from the middle of the pane, sold for \$950 (\$1000), approximately its wholesale value.

A full set of plate proofs on card sold for \$475 against a catalog value of \$295. A set of the four bi-color invert proofs brought \$4600 (\$4000). The proof lots, 24 in all, led off the sale, and all but two of these were purchased on the floor by Irwin Weinberg, prompting a facetious suggestion that the remaining 1869 material be offered as one lot. Auctioneer Keith Harmer politely declined and thereafter the buyers were more varied.

The issued stamps, in the inverted color varieties, proved again that condition is critical. A 15c invert described as "extensively repaired" sold for \$850 against a catalog of \$7500. Mr. Laurence examined this item at Interphil and remarked then that its backside resembled a primitive American quilt. A 24c invert in better condition (good color and slight creases) realized \$4500 (\$6500), while a 30c invert with a few short perfs but fresh and pretty realized \$15,000 (\$23,500).

For the unused stamps, realizations under catalog were most common; and most of these were described as being in fine condition. Those described in VF or better shape did much better. Two good examples are lots 617 and 625. The former being a VF 10c realizing \$375 (\$225), while the latter was an exceptional 90c, with both frame and vignette very well centered which sold for \$3400, just shy of two times catalog value.

Used copies varied with condition and cancellation. For \$35 Mr. Laurence purchased a 10c single with the familiar New York Steamship cancellation, noteworthy because of its red colored cancellation, normally typically black. Another 10c 1869, this one on piece used with a 5c blue Hawaii brought \$210. Both stamps were tied by the large magenta San Francisco CDS. A very fine used 30c (lot 650) with brilliant colors came in at \$190, about two and a half times catalog. A small section of 1869 fancy cancels then commenced, but prices were low as most of the stamps were either defective or had poor centering. A 3c locomotive showing a clear but incomplete strike of the Waterbury "woman in bonnet" brought \$170.

The sale offered a complete set of the 1869 series in blocks, but as condition was not good on most, prices were generally low. However, even items in better condition sold for less than they have sold in the past. A 1c block of nine, OG but clipped on two sides fetched \$310 (\$875). A 10c block of four, part OG, but also off-center, realized \$575 (\$1500). A comparable block, similarly centered, but with right sheet margin selvage, brought \$1150 in the Siegel Rarities sale held March 31st. A used block of the 15c Type I, much more attractive in the flesh than it appeared in the illustration, sold for \$1600 (unpriced in the catalog because of its rarity). The buyer here got a real bargain, given the great scarcity of this multiple. A faulty 90c block of 4 sold for \$1400 (\$5000), but it was faulty and reinforced. From this full showing of 1869 multiples, only one item sold over catalog. This was a 3c Locomotive in a block of 4 (lot 672). It possessed never hinged original gum and was in fine condition with a fresh appearance and sold for \$155, \$25 over catalog. Of eleven multiples offered, five sold for less than half catalog.



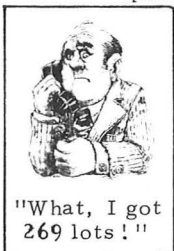
(Continued on Page 6)

AUCTION ACTION (Cont.)

About 50 lots of covers ensued, the prices of which, not surprisingly, ranged widely. Realizations were almost invariably in excess -- sometimes far in excess -- of catalog. Covers addressed to "H. B. Shaw, Alfred, Maine" were ubiquitous, prompting us to think that the man who formed this collection had a very early pick through this fascinating find. At Interphil, and in his written coverage of the Hessel sale, Mr. Laurence educated us about the Shaw covers. While most of the following about these covers is hearsay information, it is, as Mr. Laurence states, "so charming we feel compelled to pass it on." While we have never seen anything written about H. B. Shaw, several reliable old-timers have told us that he was a she, Harriet Shaw to be specific, doing a mail-order business (apparently quite a good one) in patent medicines and wigs. Ms. Shaw, so we are told, saved the envelopes she received, apparently as a bookkeeping convenience. Many of the Shaw covers bear dollars-and-cents notations that can be interpreted as the sum the envelope bore and/or her profit on the transaction. We have heard tell that at least one Shaw cover still contains its original letter, describing a remittance of \$14 and ordering a staggering quantity of pharmaceutical cocaine.

----- Editor's Note: The above is quite correct, and hoping the reader will allow this distraction, he would like to quote the contents of a Shaw enclosure in his collection to substantiate and amplify this information. The envelope is a small white 1st class letter whose 3c rate was paid by a nice strip of 3-1c 1869 singles, postmarked Marietta, Ga. Dec. 20.

Marietta, Ga.
Dec 19th / 69



"What, I got
269 lots!"

Mr. H. B. Shaw,

Dear Sir, if you would like to establish an agency at this place, I would like to be the one appointed, if you have confidence in one so far from you. I am a young man 26 years of age just married, and started out in life. You can send me a sample if you desire of all your tress by express; giving me the privilege to examine them before paying for them. If I think they will do I will take them out of the office and order more from you. You can mark C.O.D. if you desire. Perhas you had better as we are not well aquante. Expecting to hear from you soon I remain

C. B. C. Holleman

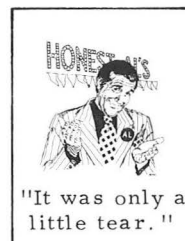
In the Hessel sale, a 2c 1869 bisect cover from the Shaw find fetched \$700. Lot 687 contained a nice horizontal strip of five of the 2c Post Rider on cover to Germany. This attractive cover realized \$280. Various registered covers from the Shaw find, showing 3c Locomotives used with 12c or 15c stamps of the previous issue, sold for prices between \$90 and \$140. A very attractive registered Shaw cover, showing the domestic postage paid by a 3c 1869 and the registry fee paid by a 3c Banknote plus a 2c and a 10c 1869 found a nice home at \$475. Other registered Shaw covers seemed to sell for prices determined by the unusalness of the stamp combinations.

This sale had, to our way of thinking, more 6c 1869's as the sole object of the cover than any sale we have seen in a long while. Of the five lots we put in this classification, two notable covers bear recognition. The first, lot 693, bears a single 6c 1869 on cover from New Orleans to France, overpaying the 4c part-payment rate. This cover realized \$170 against a catalog of \$100. The other bears a vertical strip of three of the 6c! The manuscript cancellations and townmark hurt the price of what we believe to be a scarce rate. Consequently, the cover realized only \$130. Word is, a much better strip of 3 on cover will be in the Siegel sale of Sept. 11.

A show-stopper of a 3c 1869 cover -- showing a 3c Locomotive on a vastly oversized advertising envelope bearing a large line-engraved illustration of an elephant skating upright on ice-skates, sold for \$330. We state categorically that there can't be too many 3c 1869 covers showing elephants on ice skates.

Stopping only at the high points among the remaining covers, we note the following: A double-rate cover from Shanghai showing two 10c 1869's and all the appropriate markings, sold for \$1050. Lot 711 is a folded-down piece of paper bearing 3 copies of the 24c 1869, 2 of which are defective. Against a catalog of \$2350, this item brought \$1350. A very pretty 30c 1869 on cover from San Francisco to France realized \$4000 (\$2250). Despite a recent Foundation certificate, the markings suggest a 10c stamp would have done the job. A 3c 1869 on a 3c 1861 envelope showing a Wells-Fargo printed frank and the oval Roseburg marking, sold for \$250.

Perhaps the scarcest 10c cover offered was contained in lot 724. This cover possesses a single 10c stamp along with a one dinero Peruvian stamp and a one shilling British stamp, making it a triple combination cover. Mailed from Callao, Peru to Springfield, Ohio, this rare piece realized \$5750. The reader is referred to Chronicle #88 for further information on mixed franking combinations. Unquestionably, one of the outstanding covers was sold in lot 737. This Thorel correspondence cover shows the 36c rate via British mails to Yokohama, efficiently made by a 12c and a 24c 1869. It has everything to qualify it as a gem of the first water, including a scarce combination of stamps a scarce rate (only cover known to date showing this rate paid by 1869 stamps), besides being just downright pretty. Evidently someone else thought so too, and paid \$18,000 for the view.



"It was only a
little tear."

The unused reissues generally sold below catalog, we assume once again because of condition. The one real gem among the reissues, a truly glorious 90c copy, sold for \$2200 (\$1450). Also complete in this sale were the used reissues, of which four examples sold over catalog and five sold under. The used 3c reissue continued its current popularity by fetching \$2200 (\$500). Since the unused 3c reissue in the same sale went for \$550, there is clearly a good profit to be made in the fraudulent application of deceptive cancellations on unused 3c reissues. With used copies, Buyer Beware. **

1869 High Values on Cover (Revisited)

by Dr. Richard M. Searing

I would at this time like to thank all of the PRA members who have taken the time to contact me in regards to this research. In particular, special thanks are due to Michael Laurence, Millard Mack and Ben Chapman. In conjunction with Interphil recently in Philadelphia, I was able to find room for a trip to the Philatelic Foundation in New York City. At that time, I went through the 1869 records of the late Stanly Ashbrook and the Foundation records on all pertinent 1869 covers submitted for opinion. Most of the present addendum was obtained from this inspection.

Readers will note the existence of the 24c invert used on a cover to Paducah, Ky. I hope to publish a photo of this item in a future "1869 Times." I have recently learned of the existence of a 15c invert on cover and have obtained a photo of this item which I shall also publish. Does anyone know of the 30c invert used on cover? Please contact me if you have information about such a cover.

Assuming that all of the listed covers are genuine, the present total stands at 64-24c 1869 covers, 1-24c invert cover, 60-30c 1869 covers. These totals exceed my original "rule of thumb" estimate by nearly 30 covers. If any reader owns some of these items and can supply new data or correct erroneous data, please contact me before August 14, 1976. At that time the revised data will be submitted to the Chronicle of the U.S. Philatelic Classics Society for publication in the 1869 Section. With your help, I can come close to a complete record of the covers.

Addendum to Table I, 1976 Annual PRA Publication - 24c 1869 Stamp Used on Domestic Mail

<u>Date</u>	<u>Origin/Destination</u>	<u>Stamps</u>	<u>Rate</u>	<u>Remarks</u>	<u>Source</u>
4/23/69	NYC/Mobile, Ala.	120	8x3c	court house legal cover	SBA records*
3/9/70	?/Taebot Co., Ga.	120	3x3+15c	pen docket 3/9/70	SBA records*
7/13/70	NYC/Albany, NY	120	3x3+15c	regist. legal cover	SBA records*
9/8/70	Mobile, Ala./Hollow-square, Ala.	120-pr.	16x3c	refolded court house wrapper	Simmy Sale 6/76 lot 134*
2/1/?	N. Orleans/Milwaukee	120	8x3c	legal cvr to US district ct.	Phil. Fd. rec.*
5/8/?	Santa Fe, NM/Garland, Co.	120	3x3+15c	tied blk town to reg. cover	Hessel colln.*
9/27/?	NYC/Wescasses, Me.	120	8x3c	large legal cover	Phil. Fd. rec.*
12/10/?	N. Orleans/Augusta, Ga.	120	5x3+15c	refolded wrapper, reg. money	Wunsch colln.*
?	?/Alpena, Mich.	2-120, 147	17x3c (?)	refolded courthouse cvr.	SBA records*
?	?/Lexington, Ky.	3-120	24x3c	refolded blue courthouse cover, Ex Eagle Colln.	Hessel-II lot 711*
<u>The 24c Invert on Cover</u>					
?	?/Paducah, Ky.	120b, 147(?)	9x3c	invert tied to refolded legal cover	Phil. Fd. rec.*

Addendum to Table II, 1976 PRA Publication - 24c 1869 Stamp Used on Foreign Mail

5/22/69	NYC/ London	120	2x12c	tied to sewing mach. adv.	Knapp-II, 1772*
6/29/69	NYC/Cadiz, Spain	2-120	2x24c	rec 7/10 London, 7/14 Spain, per "China"	Phil Fd. rec.*
7/14/69	NYC/London	120	2x12c	tied cir wedges, red London PD, 7/24	Knapp-II lot 1772*
7/20/69	N. Orleans/London	120	2x12c	NYPD 7/28, blk. wedges	Phil. Fd. rec*
8/31/69	NYC/London	120	2x12c	red NYPD-19, London 9/12	SBA records*
9/7/69	NYC/Cadiz, Spain	120	24c	red London 9/18, Spain 9/22	Phil. Fd. rec*
1/4/70	San Francisco/Taeno Arica, Peru	120	34c	10c stamp missing. SF PD cancel	Hessel colln.*
1/28/70	NYC/Yokahoma, Japan	117,120	36c	red "32" via Marseille, London PD	Hessel-II lot 737*
4/5/70	Cuba-NYC/Iima	116,120	24c+10c	red "12" ex Richey	SBA records*
7/?/70	Louisberg, NC/London	120	4x6c	lge legal wrapr. poss fake(?)	Fleckenstein-123*

High Values on Cover Revisited (Cont.)

Addendum to Table IV, 1976 PRA Publication - 30c 1869 Stamp Used on Domestic Mail

Date	Origin/Destination	Stamps	Rate	Remarks	Source
1/20/71	St. Louis/Trenton, NJ	121,147	11x3c	large legal wrapper	SBA records*
3/14/71	NYC/Philadelphia, PA	121,147	11x3c	black rosette, lg. legal cvr.	Wunsch colln.*

Addendum to Table V, 1976 PRA Publication - 30c 1869 Stamp Used on Foreign Mail

6/29/69	NYC/Bern, Switz.	121	2x15c	NY PD ALL, 6/29 dkt. Br. pkt.	SBA records*
7/6/69	NYC/ Paris	121	2x15c	red NYPD "6" front only	SBA records*
8/6/69	NYC/Paris	121	2x15c	per "Ville de Paris NYPD "24", rec. 8/7	Phil. Fd. rec.*
8/18/69	NYC/Bordeaux	121	2x15c	red NYPD "24" per "Arabia"	SBA records*
8/30/69	N.Orleans/Bordeaux	121	2x15c	NY "PD ALL", "24", red PD	Phil. Fd. rec.*
9/25/69	Cuba-NYC/Paris	116,121	2x15c+10c	red NYPD "12", rec. 10/7	Phil. Fd. rec.*
9/29/69	NYC/Paris	2-121	4x15c	red NYPD "12"	SBA records*
11/5/69	NYC/Paris	2-121	4x15c	red NYPD "24"	SBA records*
11/7/69	San Francisco/France	121	2x15c	red NYPD "12", Am pkt. front only	Interphil Dealer*
12/27/69	NYC/Pt. St. Mary, Spain	116,121	34c	red "24"	Gibson Sale lot 489
1/1/70	NYC/Switzerland	121	2x15c	black cancel	SBA records*
4/30/70	San Francisco/Bordeaux	121(?)	10c	blk "8" NY May 10 20c overpay???	Hessel-II, lot 712*
5/5/70	NYC/Guatemala	121	3x10c (?)	"4" docket, per "Alaska"	Phil. Fd. rec.*
5/27/70	NYC/Cadiz, Spain	2-113,121, 150	2x22c	red "48" per "Main" London PD 6/8	Phil. Fd. rec.*
6/??/?	Eire, Pa. /London	121, pr-179	5x6c+10c	pen docket reg. no. 455 large legal cover	Wunsch colln.*
?	?-NYC/Paris	119,121	3x15c	NYPD 8/4/69, red "18" per "China"	Cryer colln.*



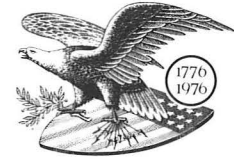
The only known cover bearing the 90c 1869 stamp. Photo from SBA SS.

THE U.S. 1869 PICTORIAL RESEARCH ASSOCIATES

Number

Name and Address

- 1 John Birkinbine II, 7225 N. Oracle Rd., Tucson, Ariz. 85704
- 2 Margaret L. Wunsch, 1219 W. Downer Pl., Aurora, Illinois 60506
- 3 Ben Chapman, 5099 Steuben Dr., Memphis, Tennessee 38134
- 4 J.C.M. Cryer, Box 316, Port Lavaca, Texas 77979
- 5 King Horner, 8614 Bellona Ave., Baltimore, Md. 21204
- 6 Ed Hill, 2916 Mid Lane, Houston, Texas 77027
- 7 Michael Laurence, 919 N. Michigan Ave., Chicago, Illinois 60611
- 8 Michael C. O'Reilly, 1405 Appalachee Dr., Huntsville, Ala. 35801
- 9 Donald E. Haller, Jr., P.O. Box 363, McLean, Va. 22101
- 10 Millard Henry Mack, 2133 Luray Ave., Cincinnati, Ohio 45206
- 11 Robert C. Masters, 2227 Westwood Pl., Falls Church, Va. 22043
- 12 Elliott H. Coulter, Sterling Rd., Harrison, N.Y. 10528
- 13 Charles Miller, 206 Furches St., Raleigh, N.C. 27607
- 14 David T. Beals III, 4117 Broadway, Kansas City, Mo. 64111
- 15 Creighton C. Hart, 2700 Verona Rd., Shawnee MSN, Kansas 66208
- 16 Maurice Leigh Robinson, 175 Umpawaug Hill, West Redding, Conn. 06896
- 17 Bruce W. Hazelton, P.O. Box 67A, Cumberland Center, Maine 04021
- 18 Dr. H. Leland, 17115 Talbot Rd., Edmonds, Wash. 98020
- 19 Mark Essner, 1415 Millwood Lane, Merrick, N.Y. 11566
- 20 C. R. Kannewurf, 312 S. Butrick St., Waukegan, Illinois 60085
- 21 J. David Baker, 7410 Holliday Dr., West, Indianapolis, Ind. 46260
- 22 Richard K. Meyer, 5100 N. Prospect Rd., Peoria Heights, Ill. 61614
- 23 Fredrick W. Lopez, 219 Franklin St., Melrose, Mass. 02176
- 24 Jeffrey Forster, 685 Shelter Creek Lane, Apt. #244, San Bruno, Cal. 94066
- 25 Cy Horowitz, Box 26, Tannersville, N.Y. 12485
- 26 Alan T. Atkins, P.O. Box B, Milford, Ohio 45150
- 27 Allan G. Latawiec, 155 Hayward Place, Wallington, N.J. 07057
- 28 Irving Piliavin, 2703 Mason St., Madison, Wisc. 53705
- 29 Rex H. Stever, 1505 Bank & Trust Tower, Corpus Christi, Texas 78477
- 30 William G. Kremper, Ph.D., 3714 Partridge Dr., Macon, Ga. 31204
- 31 Lt. Col. Robert G. McClellan, Northbrook Stamp Co., P.O. Box 563, Northbrook, Ill. 60062
- 32 Dr. Graydon Lee Schreiber, 1310 Westellen Rd. Towson, Md. 21204
- 33 James W. Duplex, Springbrook Terrace, Cerretta St., Stamford, Conn. 06907
- 34 R. H. Lounsbey, Bool's Flower Shop, 209 N. Aurora St., Ithaca, N.Y. 14850
- 35 Whitney K. Towers, 171 S. Layton Dr., Los Angeles, Calif. 90049
- 36 Paul D. Bourke, 146 Cordaville Rd., Ashland, Mass. 01721
- 37 Lawrence A. Bustillo, 162 Newhouse St., Springfield, Mass. 01118
- 38 Dr. Frank G. Marx, 58 Gallup Lane, Waterford, Conn. 06385
- 39 Dr. Edward S. Greenwald, 39 Disbrow Circle, New Rochelle, N.Y. 10804
- 40 Paul R. Hofmann, 6444 N. 63rd Place, Scottsdale, Ariz. 85253
- 41 Robert L. Markovits, P.O. Box 891, Middletown, N.Y. 10940
- 42 Kenneth R. Laurence, 13005 Keystone Terrace, North Miami, Fla. 33181
- 43 Frank C. Baker, 29 Wood Road, Morristown, N.J. 07960
- 44 John McMahon, 3618 W. 75th St., Prairie Village, Kansas 66208
- 45 Leo Stawecki, 30525 Hoy St., Livonia, Mich. 48154
- 46 Sidney W. Emery, 7 Howard St., Springvale, Maine 04083
- 47 Jonathan W. Rose, 30 Golf Road, Pleasanton, Calif. 94566
- 48 John C. Juhring, Box 369, Southern Pines, N.C. 28387
- 49 Hubert C. Skinner, P.O. Box 4097, New Orleans, La. 70118
- 50 Mr. Daniel Olsen, "El Molino", Vilanant (Gerona), Spain
- 51 William T. Crowe, 3 East 57th St., New York, N.Y. 10022
- 52 Robert L. Lisbeth, P.O. Box 1325, Springfield, Va. 22151
- 53 David L. Jarrett, P.O. Box 1486, Grand Central Station, New York 10017
- 54 Seth S. Gross, 809 Quincy Ave., Scranton, Pa. 18510
- 55 Bruce G. Corrigan, 4725 Ridgeway Dr., Apt. 223, Del City, Okla. 73115
- 56 Richard D. Carlson, P.O. Box 866, Fairborn, Ohio 45324
- 57 Jacob L. Johnson, III, 630 Davis St., Evanston, Ill. 60204
- 58 James V. Rasdale, Room 1520, 36 S. State St., Chicago, Ill. 60603
- 59 John A. Russo, Suite 1516, 36 S. State St., Chicago, Ill. 60603
- 60 Douglas Lee, Stamps & Things, 36 S. State St., Chicago, Ill. 60603
- 61 Kenneth L. Rice, 940 Paseo Castalla, West Palm Beach, Fla. 33405
- 62 Roy E. DeLafosse, Jr., 1785 Samaria Trail, Tucker, Ga. 30084
- 63 Hy Turkin, Cardinal Sales, 681 Main St., Belleville, N.J. 07109
- 64 Henry M. Spelmann, III, Box 645, San Anselmo, Calif. 94960
- 65 Dr. Harold Kleiman, 1412 E. Red River St., Victoria, Tex. 77901
- 66 Dr. Richard M. Searing, 1300 San Paulo Ave., Placentia, Calif. 92670
- 67 Andrew Levitt, P.O. Box 342, Danbury, Conn. 06810
- 68 Richard J. Niezabitowski, 206 Briar Brae Rd., Stamford, Conn. 06903
- 69 Dr. J. Weston Smith, 717 Riverside Drive S.E., St. Cloud, Minn. 56301
- 70 Louis G. Tavani, Jr., 712 Homestead Rd., Havertown, Pa. 19083



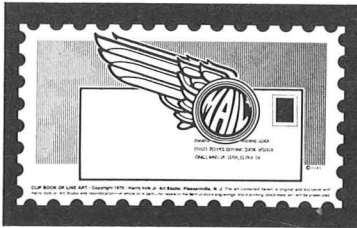
"1869 TIMES" will award a full one-year paid-up dues for next year to the Associate who proposes the largest number of new PRA members in the next 12 months.

(Continued)

- 71 James H. Patterson, 3323 E. Oregon Ave., Phoenix, Ariz. 85018
- 72 Dr. Joseph F. Rorke, Taliesin West, Scottsdale, Ariz. 85252
- 73 Miss Alice Lee Erickson, P.O. Box 909, Ingleside, Texas 78362
- 74 John D. Miller, 220 E. Henry Clay, Milwaukee, Wisc. 53217
- 75 Martin Richardson, 7130 Claybeck Dr., Dayton, Ohio 45424
- 76 M. Jack Reinhard, 365 Brookmeade Dr., Gretna, La. 70053
- 77 Charles L. Towle, 4621 Don Jose Drive, Tucson, Ariz. 85718
- 78 Dr. John L. Robertson, 2 Hertzal St., Warren, Pa. 16365
- 79 J. Leonard Diamond, 407 Lincoln Rd., Suite 9-G, Miami Beach, Fla. 33139
- 80 William C. Scheetz, 104 Myrtle Ave., Newark, N.J. 14513
- 81 John R. Biddle, 24 E. Northwood Ave., Columbus, Ohio 43201
- 82 Robert Abelson, 11205 S. Washtenas, Chicago, Ill. 60655
- 83 Dr. Richard J. Boucek, 1 Wilson Dr., Ben Avon Heights, Pittsburg, Pa. 15202
- 84 James C. Tillinghast, Box 5, Marlow, N.H. 03456
- 85 James H. Schreiber, 3155 Lakehaven Dr., Ann Arbor, Mich. 48105
- 86 Michael Plett, 13434 Idlewild Dr., Bowie, Md. 20715
- 87 Jerry F. Bock, Indi, P.O. Box 41268, Indianapolis, Ind. 46241
- 88 John R. Green, II, 52 Jefferson Rd., Webster Groves, Mo. 63119
- 89 Larry R. Kutzy, 409 Butternut Dr., Fredericksburg, Va. 22401
- 90 J. H. Beachboard, 2500 N. Van Dorn St., Apt. 902, Alexandria, Va. 22302
- 91 Keith A. Loder, P.O. Box 1541, Auburn, Calif. 95603
- 92 Lynn K. Brugh, Jr., Bai Yuka, St. James, Md. 21781
- 93 Bert T. Sheldon, P.O. Box 6074, L.I.C., New York, N.Y. 11106
- 94 Alvin R. Kantor, 1088 Bluff Rd., Glencoe, Ill. 60022
- 95 Walter G. Bender, 5312 Wakewood, Apt. 21C, Houston, Texas 77081
- 96 Alex Adelman, Washington Univ. Box 3016, Clayton, Mo. 63105
- 97 Norman Rushefsky, 277 Bonnie Brae Ave., Rochester, N.Y. 14618
- 98 Raymond J. Ziegler, 1431 Briarwood Ln., Lakeland, Fla. 33803
- 99 Neilson Caplain, 387 Albany St., Fall River, Mass. 02720
- 100 Conrad P. Cotter, 2103 Langley Ave., Pensacola, Fla. 32504
- 101 Wm. J. Fletcher, P.O. Box 2097, Huntington Sta., Shelton, Conn. 06484
- 102 George K. Wadleigh, 199 Locust St., Danvers, Mass. 01923
- 103 Edward P. Babcock, 11 Gregg Ave., Wilmington, Del. 19807
- 104 Mrs. Kit Schonbrun, Hopeville Box 175, Jewett City, Conn. 06351
- 105 Mrs. Jon Wolfe, P.O. Box 5043, Little Rock, Ark. 72205
- 106 Douglas Gary, P.O. Box 457, Campbell, Calif. 95008
- 107 Tomas Barnhiser, 1471 Seneca Dr., Xenia, Ohio 45385
- 108 Morrison Waud, One 1st National Plaza, Room 4600, Chicago, Ill. 60603
- 109 Ken Gilbert, 1853 Green St., San Francisco, Calif. 94123
- 110 Francis X. Bachhuber, 5445 N. Morgan St., Alexandria, Virginia 22312
- 111 Joseph F. Sciuto, 5420 N. Morgan St., Alexandria, Virginia 22312
- 112 R. L. Warren, P.O. Box 276, Philomont, Virginia 22131
- 113 Joe H. Crosby, 6604 Crow Circle, Oklahoma City, Oklahoma 73132
- 114 Jay M. Weiss, Ph.D., Rockefeller Univ., 66th St. & York Ave., N.Y.C. 10021
- 115 Edward Stewart, P.O. Box 13861-A, Sacramento, Calif. 95813
- 116 Edward C. Shore, DDS, 112 E. Market St., Lewistown, Pa. 17044
- 117 Samuel H. Williams, Jr., P.O. Box 113, Lynchburg, Va. 24505
- 118 Leonard Kapiloff, Box 1272, Rockville, Md. 20850
- 119 George Turner, 408 A St. S.E., Washington, D.C. 20003
- 120 James W. Beach, 523 Normal Rd., DeKalb, Ill. 60115
- 121 C. Angus Parker, Argyle Etkin, Ltd., 265 Strand, London, W.C. 2, England
- 122 George M. Irely, 330 W. Jersey St., Elizabeth, N.J. 07202
- 123 Robert H. LeBow, M.D., 303 12th Ave. Rd., Nampa, Idaho 83651
- 124 C.E. Sawyer, 2016 Main, No. 1113, Houston, Texas 77002
- 125 Herman Herst, Jr., Box 1583, Boca Raton, Fla. 33432
- 126 Daniel R. Metzger, 2614 Wabash Rd., Lansing, Mich. 48910
- 127 Keith Bantz, 222 Artist Lake Dr., Middle Island, N.Y. 11953
- 128 Thomas Barrett, Box 514, Marblehead, Mass. 01945
- 129 Daniel White, 627 Reid Rd., Bldg. 15, Apt. 14, Grand Blanc, Mi. 48439
- 130 Falk Finkelburg, P.O. Box 237, Coram, N.Y. 11727
- 131 Jerry M. Brown, Edgewood Stamp Co., P.O. Box 424, Natick, Mass. 01760
- 132 Bruce Wright II, 448 St. Andrews Dr., Akron, Ohio 44303
- 133 James E. Lee, c/o APAC, Suite 105, 2600 W. Peterson Ave., Chicago, Ill. 60659
- 134 Howard L. Rosenberg, 9395 N. Hamlin Ave., Des Plaines, Ill. 60016
- 135 Edwin A. Upton, 900 Agnew Rd., Pittsburg, Pa. 15227
- 136 Judith Hungerford, 219 Stamford Ave., Berkeley, Cal. 94708
- 137 Marc Haas, 30 Broad St., New York, N.Y. 10004
- 138 Rudolf G. Wunderlich, Kennedy Galleries, Inc., 40 West 57th St., New York, N.Y. 10019
- 139 James M. Tindall III, West Main Street, Brookside, N.J. 07926
- 140 William K. McDaniel, 800 Cannan Drive, Angleton, Texas 77515
- 141 Bradley B. Horton, 13914 Barryknoll, Houston, Texas 77024
- 142 Ravi R. Vora, 12811 Figaro Drive, Houston, Texas 77024



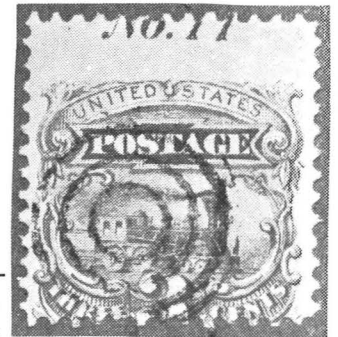
Personal Research



Our "1869 Times" is intended to be an informal type of newsletter where Associates can share areas of interest with one another and have printed requests for assistance. It is hoped all will use this section to full advantage. A few initial inserts will be presented here to show the type of thing which we believe should be shared. Let us hear of your interests.

Don Haller, our Secretary, has a request for information on the number of known existing authentic copies of the 1869 high values without grill (numbers 118a, 120a, 121a, and 122a). Any member having data bearing on this matter is requested to so advise him at P.O. box 363, McLean, VA 22101.

Jim Stever called the other day to report that he is extremely interested in the 3c Locomotive plate number single identification using the information developed by John Birkinbine and published in the 1969 Congress Book. (One could have gathered this from reading Jim's '76 PRA article on plate no. 30.) At any rate, Jim says that he has just found another way to distinguish between the two top plate no. 11 stamps (falling on left and right panes). At the top center of the stamp there is an inverted "V". On one of the plate no. 11 stamps the right leg of this inverted "V" is much shorter than the other leg. The corresponding plate no. stamp from the other pane does not show this. Still not determined is which is left and which is right. See the 1969 Congress Book, page 59. Address for #29 on pg. 9.



Your Editor is still trying to determine when the first mail was carried over the completed Transcontinental Railroad. The historic connection of the UP and CP railroads was of course made on May 10, 1869. Any information whatsoever would be appreciated. Of interest are covers showing the famous "End of Tracks" Union Pacific cancel -- on the 3c Locomotive, of course! What do you have??

Clip and mail to Donald E. Haller, Secretary, P.O. box 363, McLean, VA 22101
Make checks payable to the PRA. Don't worry, nothing on back to keep. Another form!

Name _____ (PRA # _____) Amount Enclosed:

Address _____ \$2 Initiation _____

_____ \$15 Annual Dues _____

I would like to write for the Annual Publication, "The Record." General subject of article, or title, if known _____

Approx. length (double spaced typed pages) _____. Expect 1st draft to Editor on or about _____ (Dec. 31, 1976 deadline) I will provide my own B/W glossy photos (at least 5" by 7"). I need help with the photography (Ed. will help).

Secretary Haller will forward money to Treasurer and article information to Editor and keep you on the rolls for the 1976-77 year (drop date Oct. 31). Send article draft to Editor as soon as possible and communicate with him at 5099 Steuben Dr., Memphis, TN 38134. The 1977 Annual will have to be distributed at the annual meeting in April of 1977.

The Last Page -- Odds and Ends

The next edition of the "1869 Times" will contain the list of articles which are being prepared by our authors for the 1977 "Record". Please give this thought and send in your ideas for research articles. Experience shows that the earlier you start on your article, the better the result will be. First time authors are especially encouraged.

The insertion of Classified Ads as well as Dealer Ads to help defray "Times" publication cost has been proposed. On the whole your Editor believes this will be good for the newsletter. Thus, dealer members are encouraged to insert display ads in the "Times" on the basis of \$15 per 3" high by 8" wide (full page width). A classified section will also be available to members wishing to use it at \$3 per 1" high by 4" wide space (half page width).

Our Treasurer reports that 7 Associates have not paid for their 1976 Interphil PRA books. These books will be held until September 1, 1976 only, at which time they will be sold to those on the waiting list for books. If you are one of the 7 send your check for \$15 to Jim at 1505 Bank & Trust Tower, Corpus Christi, Texas 78477 right away.



Jim also reports that the PRA treasury contains \$830.30 as of 7/28/76. Basically, the financial plan for this year is to spend this money (approx. \$200 per quarter) for the "1869 Times" and have "The Record" paid through the regular annual PRA dues.

Several Associates have written to ask assistance in obtaining author's autographs on the appropriate pages of the Interphil book. I suggest those wishing to do this prepare a pack containing a mailing list, stamps and the necessary pages for signatures and send it out on an autographing circuit. (like they sell stamps in the APS) Wow, what an idea! How about an 1869 stamp and cover circuit! Anyone interested? Reply below.

"1869 Times" articles are needed! Interested prospective writers communicate with the Editor. Our next deadline will be October 8. That's only 2 months away. Also, back issues of the newsletter are available at \$1 each while they last from him.

Your Editor, being professionally engaged in Consumer Research, can't pass up an opportunity to find out attitudes and opinions. Please take time to fill out this questionnaire concerning our PRA and send it in along with the dues and authorship statement on the reverse. The Secretary will forward it to BEC. If you wish to remain anonymous, just photo copy this side and answer incognito directly to BEC. Feedback is helpful.

Please give overall impression of Interphil publication: _____
Which article was the best: _____ Why: _____
Other articles of merit: _____
What type of article is most useful: _____
Suggestions for the Annual Book: _____

In "1869 Times", what have you enjoyed: _____
In "1869 Times", what is not liked: _____
What would you like to see in "Times" in future: _____
Would you like to see an 1869 stamp and cover circuit started: _____ Would you participate: _____
Would you coordinate: _____ Suggestions: _____
Would you like to see an 1869 auction appear in the "Times": _____ Would you participate: _____
Would you coordinate: _____ Suggestions: _____
Do you like current format of "Times": _____
What else should PRA be doing: _____
Would you volunteer to mail out "Times": _____ Mail out "Record": _____
Be new member recruiting chairman: _____ Arrange program for '77 meeting: _____
What else willing to do: _____