

# 1869 TIMES

© COPYRIGHT 1978

*quarterly newsletter of*  
**THE UNITED STATES 1869 PICTORIAL RESEARCH ASSOCIATES**

Bank & Trust Tower, Corpus Christi, TX 78477

U.S. ISSN 0363-6542

ALL RIGHTS RESERVED

Volume 3, No. 4

May 1978

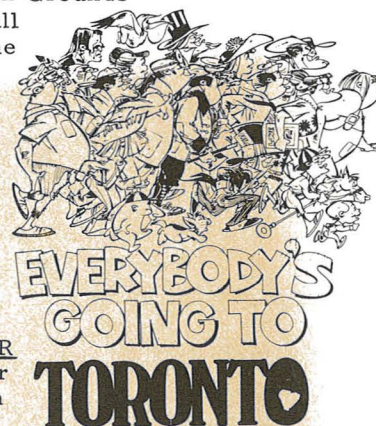
Whole No. 11

## ***Annual Meeting Slated for CAPEX***

The Third Annual Meeting of the United States 1869 Pictorial Research Associates will be held in conjunction with the upcoming International Exhibition at CAPEX '78 in Toronto, Canada, June 9-18, 1978. Site of the show will be the Canadian National Exhibition Grounds and our Annual Meeting is slated for Sunday afternoon June 11 from 2pm till 4pm in the Algonquin Room at the Royal York Hotel. This hotel will be the center of activity for all "Classic" U.S. philatelists.

A slide show program is planned on the "3c 1869 Locomotive", in which several of the collections of PRA Board Members will be highlighted. This will be something to see, and a great learning opportunity. It is hoped the program will stimulate lively discussion and time has been allowed for a question and answer period.

Presentation of the second annual Margaret Wunsch Award will be made at the Annual Meeting. A beautiful plaque has been prepared and will be presented by the Award Committee. The Wunsch Award is given to the author whose writings published in either "1869 Times" or THE REGISTER are viewed as the greatest contribution to 1869 philately. The first winner was Dr. Richard M. Searing, whose research "High Value 1869 Stamps on Original Cover", was printed in the 1976 REGISTER. This year's winner will be drawn from articles published either in Volume 2 of "1869 Times" or The 1977 REGISTER.



## **NEW OFFICERS ELECTED**

Jim Stever reports that the results of the election for PRA Officers and Directors are in, and that our new President is Jim Cryer of Port Lavaca, Texas. Only about 1/4 of the membership voted (even though ballots and envelopes were included with every edition of the past "1869 Times"). Results are as follows: President - J.C.M. Cryer, 67 votes; Vice-President - Margaret Wunsch, 67 votes; Secretary-Treasurer - Rex S. (Jim) Stever, 60 votes; Directors - John Birkinbine, 58 votes; Michael Laurence, 66 votes; Ben Chapman, 66 votes; Elliott Coulter, 64 votes; Michael C. O'Reilly, 2 votes (write-in).

Jim writes, "I hereby certify the first seven (7) names above to be the new Board of Directors of the United States 1869 Pictorial Research Associates, with each Board member to act in the capacity designated above commencing July 1, 1978. The term of office is two years."

## **MOVING**

- - Notice is hereby given that your Editor will be moving effective 6-1-78 to the following address: 9469 Galecrest Drive, Cincinnati, Ohio 45231. All communications, manuscripts, gripes, etc. should be directed to the new address, if arrival time is expected to be after the first of June.

Because of the impending move, the 1978 REGISTER will be delayed somewhat. I am sure all Associates will understand the hassle and inconvenience caused by moving. This edition is being completed literally as the packers are knocking at the front door. Usually, it is our intention to have THE REGISTER in the mail by June 30, the end of the PRA fiscal year. This will be impossible this June, however, the delay will be kept to a minimum. See page 16 for further details.

PRA dues for fiscal 1978-79 are payable on July 1. This is the last edition of the "Times" before that date and Associates are requested to send in their dues now to cut down a bit on the work for Jim Stever, our Secretary-Treasurer. Prompt dues collection also reduces expenses required to send out repeated dues notices. This money saved may then be spent on additional member services, such as improved or enlarged publications. Manuscripts dealing with any aspect of the 1869 issue are actively being solicited by your Editor for future publication. Communicate with him at the above address and get in print!

**PRESIDENT'S MESSAGE**  
by **Margaret L. Wunsch**

We have been open to everyone we meet, no matter who they are, letting our fellowship flow through them. What a wonderful relationship this is!

Your Board of Directors and I personally extend to all new and old members the warmest of welcomes. The PRA exists because of you, your interests, your needs, and your willingness to share -- and this is why we have succeeded.

Jim Cryer (who is one of philately's greatest beloved students and personalities) will be our new President. Let's continue to give him much support and look to the future, move forward, and change with the times when necessary. RESEARCH must always be our high priority, and I urge you to write for our publications. As we grow we will hold meetings and exhibitions in various parts of the country, and we urge your participation.

Since much of our success has been because of personal involvement of our members, I wish to express thanks for the many contributions. Special thanks to Jim Cryer, Vice-President, who has acted as Membership Chairman, for a period was Circulation Manager, and has been our philanthropist when needed. Thanks to all members of the Board, as each has done his share to make the PRA a success. We also owe a special tribute to Don Haller, our first Secretary. Jim Stever has dutifully handled the Treasury and contributed strongly to our not-for-profit corporation with tax-exempt status under Section 501 (c) (3) of the Internal Revenue Code.

Our publications through the efforts of Ben Chapman have been bright and informative with lots of eye appeal. Thanks also to Jon Rose and all others who have contributed to our publications. Our publicity has been excellent and we thank John Ginn as well as the philatelic news media for this.

# 1869 TIMES

MAY, 1978

Published Quarterly. In  
February, May, August and November

VOL. 3, NO. 4  
Whole No. 11

Official Newsletter of the United States Pictorial Research Associates

\$2.00 Initiation Fee (Paid Once)  
\$15.00 Annual Dues

"1869 Times" Back Issues  
\$2.00 each

### SOCIETY OFFICERS

MARGARET L. WUNSCH, 1219 W. Downer Pl., Aurora, IL 60506 ... President  
JAMES C.M. CRYER, P.O. Box 316, Port Lavaca, TX 77979 ... 1st Vice Pres.  
REX H. STEVER, Bank & Trust T'wr, Corpus Christi, TX 78477 Sec.-Treas.  
BENJAMIN E. CHAPMAN, 5099 Steuben Dr., Memphis, TN 38134 ... Director  
JOHN BIRKINBINE, II, 7225 N. Oracle Rd., Tucson, AZ 85704 ... Director  
MICHAEL LAURENCE, 919 N. Michigan Ave., Chicago, IL 60611 ... Director

### PRA PUBLICATIONS & EDITORIAL BOARD

**Benjamin E. Chapman, 5099 Steuben Dr., Memphis, TN 38134**  
Editor-in-Chief

Elliot Coulter, P. O. Box 280, Bronxville, NY 10708  
Publication Sales Director

"1869 TIMES" (Quarterly Newsletter)  
Contributing Editors  
Michael Laurence  
Michael C. O'Reilly

"THE REGISTER" (Annual Book)  
Associate Editor:  
Jonathan W. Rose

1869 TIMES  
© COPYRIGHT 1978  
THE UNITED STATES 1869 PICTORIAL RESEARCH ASSOCIATES  
1505 Bank & Trust Tower, Corpus Christi, TX 78477  
U.S. ISSN 0363-6542 ALL RIGHTS RESERVED

We have passed our infant stage but are still growing and developing into a true service organization. I do appreciate having had the opportunity to serve, meet and get to know many very wonderful and dedicated philatelists. And now, may I conclude with this thought: The essential character of a person or organization is shown by the ways service is given to right human wrongs, seeking social justice and in bringing love into every sphere of life. Let us walk the earth bravely, lovingly and be a blessing to all. \*\*

Kudos go to Charles L. Towle for his recent Vermeil Medal at ARIPEX for exhibiting "Route and Station Markings on cover with US 1869 Pictorial Issue." See pages 7-9 for Charley's latest installment for Associates.

John Ginn, tireless Publicity Director for the PRA, will display 15 pages of "The U.S. 3c 1869 Issue" in the Club Frames of the Philadelphia Stamp Club at their Tuesday May 16 meeting.

Bob Young, 428 Wildwood Rd., Northvale, NJ 07647, writes that he is trying to determine the amount printed of the low value (1, 2, 3 & 5c) color essays. Any help would be appreciated.

Scott R. Trepel, 205 W. Clinton, Tenafly, NJ 07670, is interested in writing articles on rare fancy cancels found on the '69 issue and needs help, examples and illustrations. Please act!



**remember:**

BENJAMIN E. CHAPMAN, EDITOR  
9469 GALECREST DRIVE  
CINCINNATI, OHIO 45231

## COVER CENSUS: FURTHER DEVELOPMENTS

by Michael Laurence and Paul Bourke

Activity continues to mount in what is now generally known as "the great 1869 cover census." I'm not certain this quest deserves the adjective "great" -- a cover census, after all, is a cover census. But, if we can successfully complete a project so soaringly ambitious as this one, we may well earn the word.

Some recent developments, on which I will report more fully next time:

John Birkinbine II has volunteered to list the 1869 reissue covers. There aren't too many of these, but this is a re-enlistment, since John earlier volunteered to do the 1c covers, a formidable task.

Joe Crosby, of Oklahoma City, has very graciously volunteered to undertake (and underwrite) the preparation and printing of several thousand 4" by 6" index cards, in uniform formats; this to foster consistency among the various listings and to encourage greater participation. Joe's offer has been very graciously accepted, and Jon Rose, myself and others, are working out the details of the format(s). It is very important that we develop formats that work for all different types of covers.

After the Dave Baker sale, in early April, I had a chance to sit down very briefly with Jon and with Elliott Coulter. All three of us, I'm happy to tell you, were successful bidders at that sale, and we gathered afterward for a drink at the Drake to celebrate our good fortune. It was the sort of sale that, if you were not physically on the floor, you probably didn't buy anything.

Jon and Elliott have done a very thorough job listing 15c Type I covers. We will read the results in the next REGISTER. Jon expressed at least a tentative interest in being involved in listing the 2c 1869 covers, this pending our development of some means of breaking the covers into categories, so that the work can be distributed among various collectors according to their interests.

---

## SPOTLIGHT

Focus for this edition of the "Times" will be the 3c 1869 Locomotive, whose Census Leader will be Paul D. Bourke, P.O. box 125, Ashland, Mass. 01721. Paul sends the following report and notes that he has just acquired a new home having a LARGE basement. My opinion is that it will be well used through the course of this project!

To the PRA Membership: 'Tis about time to get on with the Great Census of 3c 1869 covers. One might ask, "Why bother?" I share this sentiment to some degree. Obviously, given the number of these items which still exist, it seems that a complete list can never be made. However, it is the sheer number of 3c covers that makes their listing together a desirable subject. I submit, that we can learn more from the 3c covers than from all the others combined.

For example, I would be willing to wager that more foreign covers exist with 3c stamps than with any others, although the higher denominations were intended primarily for foreign rates. And, how many domestic registered covers do you think we'll find? A strip of 6 3c stamps would make up the proper rate (3c + 15c fee for registration). And so on..... So let's get started.

My ideas for a listing by category is included. Please examine it, and suggest any changes that you might feel are worthwhile. I propose to break the covers into two main groups: domestic and foreign usages. In turn, the domestic usages would be broken into sub-groups for ordinary rates and multiples thereof, and other rates/fees would make up a second area. Within each sub-group would be specific sections -- with Associates volunteering to do research for each section and responsible for maintaining an accurate card-file. Foreign usages would include the same material, the main difference being the destinations and rates.

### Proposal for Listing the 3c 1869 Covers

- I. Domestic Origin & Destination
  - A. Ordinary Rate & Multiples
    - 1. Advertising Covers
    - 2. Railroad/Route Agent Markings
    - 3. Fancy/Colored Cancellations
    - 4. Auxilliary Markings (Way, Steamboat, Carrier, Forwarded, Adv, etc.)
    - 5. Major Plate Varieties/Positions (Cracks, Arrows, Pl. Numbers, etc.)
    - 6. Manuscript Cancels
    - 7. Territorials
    - 8. Mixed Issue Frankings
    - 9. Plain Ordinary 3c cover
  - B. Other Than Ordinary Rate
    - 1. Bisects
    - 2. Overpays
    - 3. Registry Fee
    - 4. Book, Circular, Package, etc.

- II. Foreign Usage (All Rates)  
To Be Subdivided Later -- Comments welcome.

A key question is that where a cover may fall into more than one category. For example, a cover with a colored cancel, used from a Territory, and affixed to an illustrated advertising cover.

My feeling is that such an item should be listed in each category, i.e., Fancy/Colored, Territorial and Advertising. In any case, the item would be fully described each time it appeared, and such items might be footnoted 1, 2, 3, etc. "1" would indicate that the item appears in one additional category, "2" in two additional categories, etc. Since each piece would be described completely, a reader, noting the description above and footnoted "2" would easily realize what the additional categories are.

For now, let's start on foreign uses. Present your comments and offer your services. For a society-wide undertaking, I would like to have volunteers for each country or group of countries. Let's Get Rolling!





# THE 10¢ STAMP OF 1869

by Michael Laurence

Part 2

## 10c 1869 Covers to Cuba

By way of showing that Cover Census can be executed successfully for low-value 1869 covers, I give you a category for 10c 1869 covers. Every 1869 stamp, as its covers get listed, will begin to fall into its own logical categories. This is one sub-set of the 10c 1869 covers.

Ten-cent 1869 covers to Cuba have come down to us in plentitude, thanks in large to a recent find. Since 10c was the basic rate to Cuba throughout the 1869 period, it should not surprise that there are so many survivors. My records show 52 covers. All show one or more copies of the U.S. 10c 1869 stamp, used to pay the "blanket rate" of 10c per half ounce, established by Congress in 1864, governing postal correspondence between the U.S. and foreign countries where there was regularly scheduled steamer service but no postal treaty. This 10c per half ounce rate was widely used to many different nations for almost 20 years. It went into effect on 1 July 1864 and (respecting covers to Cuba) expired 30 June 1875. The full legislation is presented and discussed in an article I wrote in Chronicle #86, pages 103-105. This "blanket" rate paid postage only to the foreign frontier. Internal postage had to be collected locally.

Thirty-seven of the 52 covers listed are from a single find, which first came to my attention through the courtesy of a midwestern dealer, in early 1976. The find was made prior to that. The covers had apparently reposed in Cuba for more than a century. All had suffered, more or less, from the ravages of tropical climate. There were several hundred covers involved altogether, but only 37 bore 10c 1869.

Figures 1 and 2 illustrate two covers from this find. Others from the find are quite similar. The envelopes are the same size (3" x 5 1/2"), on coarse, yellowing paper. They are from Philadelphia, addressed in the same hand to "Dr. Augustus Wilson, Care of Messrs. Brooks & Co., Santiago de Cuba." The envelopes are typically docketed in pencil at left, which is one of the reasons these covers can be year dated so certainly. The 10c 1869 stamps are typically tied by bold solid killers -- circles, squares, diamonds or hearts -- used at Philadelphia between mid-1869 and mid-1870.



Figure 1. 10c 1869 on cover from Philadelphia to Cuba showing the typical "NA1" marking. This cover is from the recently discovered Augustus Wilson correspondence.



Figure 2. Two 10c 1869 with "NA2" from the Wilson correspondence. The significance of the "NA" markings is not fully understood. See text.

The Wilson covers show black Philadelphia circular datestamps apparently applied at the Philadelphia foreign-mail exchange office. We say "apparently" because much remains unknown about the handling of the mails at Philadelphia during the 1869 period. These covers all travelled to New York, presumably by rail, where they were placed on board the weekly steamers of the Atlantic Mail Steamship Company, sailing to Havana. Thursday was the typical departure day, but there were many deviations both in scheduled and actual departures, especially during winter months. The scheduled departure dates, published in U.S. Mail, often show little relevance to actual departure dates, as published in the daily New York Times. With the Wilson covers, isolating the sailing is even more difficult, because covers were dated whenever they hit the Philadelphia post office, rather than on the sailing day in New York.

The cover in Figure 1 travelled on the steamer Morrow Castle, which departed New York on 6 January 1870 (per daily New York Times) This was a Thursday, but no mail sailing for Havana was shown in the departure schedule in the January 1870 U.S. Mail.

The cover in Figure 2 was carried on the steamer Rapidan, which left New York on 29 January 1870, a Saturday. That sailing too is not scheduled in U.S. Mail, though it took place. It was greatly delayed, due to circumstances not germane to this write-up.

If the Wilson covers had originated in New York, they would have shown New York foreign-mail markings indicating date of departure. Figure 3, from another correspondence, shows the black New York circular date stamp, with small maltese cross at bottom, frequently seen on covers to the Carribean. Other markings, sometimes including the New York steamship marking, were also used at New York on mail to the Carribean during this time. The cover in Figure 3 is routed "per Missouri" and the date is SEP 2. The daily papers confirm that on 2 September 1869, a Thursday, the steamer Missouri of the Atlantic Mail Steamship Co., departed New York for Havana.

The "NA" Markings

The most striking and enigmatic feature on any cover from the U.S. to Cuba during this period is the "NA" marking. This is almost invariably struck in black ink, though occasionally, as in the cover in Figure 3, it can be found in blue. Many bizarre theories have been advanced over the years to explain these markings, but none seems completely satisfying. As noted above, the "blanket" 10c rate under which these covers were sent, paid U.S. postage only to the Cuban frontier. There is no question, in my mind or in the mind of others I have discussed this with intelligently, that the "NA" markings show the amount of internal postage to be collected locally. The "NA" has long been assumed to stand for North America ("Norte America" in Spanish), which makes sense, though I've never seen written evidence to support it. To my knowledge, no one has ever been able to decipher the rate progression that the local collection was based on, nor has anyone even been able to say what units of currency the collection was made in -- this because of the confusion that prevailed during the changeover from the 8 Reale Peso to the 100 Centesimo Peseta, initiated in 1867. Perhaps a member who knows Cuban postal history can shed light on this problem. Spanish-colonial postal rates are not my expertise, and the literature (such as I know it) gives no satisfaction.



Figure 3. A typical cover from New York to Cuba. Here the "NA1" marking is in blue.

In any event, of the 52 covers listed below, 51 show NA markings of one sort or another. The "NA1" marking, in an oval of the type shown in Figures 1 and 3, appears on 38 of the covers. One cover shows a crayon "1", but no "NA." The NA2 marking -- the "NA" obviously struck from a different device than the numeral 2 -- appears on 11 covers. Figure 2 is an example. One cover shows NA6, comprised (like the NA2) of two separate devices.

No matter what currencies or amounts the numerals 1, 2 and 6 represent, it is clear that they were not assessed the way the U.S. postage was, on a half-ounce progression. While covers showing two 10c stamps and NA2 are sometimes seen (as in Figure 2), it's almost as likely to find a cover with two ten cent stamps and "NA1." All eleven covers in the list that show NA2 also show two 10c 1869 stamps. But nine other covers in the list, also bearing two 10c 1869's, show NA1. The one cover with NA6 shows a total of three 10c stamps -- indicating it weighed between one and 1 1/2 ounces.

Assuming the local collection was assessed on a weight basis (it's difficult to assume anything else), then the local progression must have had a base rate of one unit for letters weighing up to somewhat more than half an ounce. A rate of two units would prevail from there to some higher level but still under 1 1/2 ounces, whereupon (if the evidence of the NA6 is not a clerk's mistake) a rate of six units would kick in. (Continued)



U.S. #121b. 1869 30c Flags Inverted, used. One of the finest known examples.

**SPECTACULAR STAMP  
SPECTACULAR PRICE**

**\$39,000 IN FEBRUARY '78 SALE**

We hold 8 auctions a year and regularly feature the 1869 issues. Always interested in quality material to buy or sell. Catalogs FREE at store 3 weeks prior to all sales. By mail: Send name, address and \$1.

Richard Wolfers, Inc. / Stamps & Stamp Auctions  
127 Kearny Street, San Francisco, Calif. 94108  
(415) 781-5127

10c 1869 Covers to Cuba

I am not totally happy with this hypothesis, but at least it is supported by the evidence of the covers, all of which are recorded herewith. If PRA members have other theories or evidence, I would like to hear from them. Additions to the cover record, as always, are eagerly solicited. \*\*

CHRONOLOGICAL LISTING OF 10c 1869 COVERS TO CUBA

DATE	ORIGIN/DESTINATION	STAMPS	"NA" Mark	REFERENCES
MAY 6 69	New York / Santiago	116	None	Siegel 6-12-73 #270
SEP 2 "	"	"	NA1	Figure 3
SEP 6 "	Baltimore / Santiago	"	"	Baker Sale #198
SEP 30 "	New York / Santiago	"	"	Mozian Sale, 6-16-70
NOV 19 "	Philadelphia / Santiago	"	"	Wilson Correspondence
NOV ? "	Baltimore / Santiago	"	"	Ex Wunsch
NOV 26 "	Philadelphia / Santiago	(2) 116	"	Wilson Correspondence
DEC 1 "	"	"	"	"
DEC 3 "	"	116	"	"
DEC 8 "	"	(2) 116	NA2	"
DEC 10 "	"	116	NA1	"
DEC 15 "	"	(2) 116	"	"
DEC 17 "	"	116	"	"
DEC 22 "	"	(2) 116	"	"
DEC 24 "	"	"	"	"
DEC 29 "	"	"	"	"
DEC 31 "	"	116	"	"
JAN 5 70	"	"	"	"
JAN 12 "	"	(2) 116	NA2	"
JAN 17 "	"	116	NA1	"
JAN 21 "	"	(2) 116	NA2	"
JAN 28 "	"	"	NA1	"
JAN 29 "	Stockton, Me. / Cuba	116	"	Bruce Hazelton
JAN 29 "	? / Cuba	(2) 116	NA2	5th Green Sale, #117
FEB 2 "	Philadelphia / Santiago	116	NA1	Wilson Correspondence
FEB 4 "	"	(2) 116	NA2	"
FEB 9 "	"	116	NA1	"
FEB 11 "	"	"	"	"
FEB 14 "	Millbridge, Me. / Cardenas	"	"	Sotheby Juring Sale, CAPEX
FEB 15 "	Philadelphia / Santiago	"	"	Wilson Correspondence
FEB 17 "	N. York Steamship/Cardenas	116+10c	entire NA1	Sotheby Juring Sale, CAPEX
FEB 17 "	New York City / Cardenas	(2) 116	NA2	Elliott Coulter
FEB 18 "	Philadelphia / Santiago	"	NA1	Wilson Correspondence
FEB 23 "	"	"	NA2	"
FEB 2? "	"	116	"	"
MAR 4 "	"	"	NA1	"
MAR 9 "	"	(2) 116	NA2	"
MAR 11 "	"	"	"	"
MAR 16 "	"	116	NA1	"
MAR 18 "	"	"	"	"
MAR 23 "	"	"	"	"
MAR 25 "	"	"	Crayon 1	"
MAR 30 "	"	(2) 116	NA2	"
APR 1 "	"	116	NA1	"
APR 6 "	"	"	"	"
APR 13 "	"	"	"	"
MAY 6 "	"	"	"	"
JUN 4 "	New Orleans / Havana	"	"	Gibson Sale, #440
SEP 23 ??	Essex, Ct. / Havana	"	"	Siegel 5-20-69, #509
DEC 26 ??	Pownal, Me. / Mantanzas	"	"	Harmer 2-63; Koerber 9-74
? ? ??	Philadelphia / Havana	(3) 116	NA6	Ex Green
? ? ??	Baltimore / Santiago	116	NA1	Siegel 12/9-12/72, #1879

Reduce  
that Tax-bite  
NOW.



The United States 1869 Pictorial Research Associates has been granted tax-exempt status under section 501 (c) (3) of the Internal Revenue Code.

Because of this any contributions to the PRA for furtherance of research and promulgation of findings is deductible from Federal Income Taxes.

Contributions will be gratefully accepted to help defray publication costs of THE 1978 REGISTER, which hopefully, will be a hard-bound book.

## **TRANSIT MARKINGS FOUND ON COVERS WITH STAMPS OF THE 1869 ISSUE**

*by Charles L. Towle*

### FOLLOWUP



In Volume 3, No. 2 (November 1977) of 1869 Times, we presented an initial listing of railway route agent, railway post office and station markings found on cover with stamps of the 1869 issue. Since that time through cooperation of Messrs. Chapman, Crosby, Call, Zimmerman, the Juring Collection and with further research, we have located 15 additional markings as an extension of the original listing. One error in the original listing should also be noted -- on page 6, C. & B. Quincy Br. R.R., catalog number was listed as 659-A-1 and should be changed to 695-A-1.

While checking my files I came across two auction entries that are of interest to collectors of transit markings with the 1869 issue. They may well be the only known usages of 10c 1869 (#116) and 15c 1869 (#119) with railway markings. In a May 3, 1972 Robert Siegel Sale (#412) two lots show as follows:

No. 1074 - 10c Yellow Orange (116). Rounded corner perfs. Fine. Tied by neat cork. Partly clear "Boston to Portland" R.P.O. on 1870 folded letter to New York. Choice cover. ---Item realized \$105. (This may be USTMC 4-P-1) No photograph.

No. 1085 - 15c Brown and Blue Type II (119). Cork cancel, not tied. Fairly clear matching "F.C. & R.B. Mail Line" postmark. Clear red "New York Paid All Br. Transit" on 1870 cover to Clara Barton in Switzerland. Very scarce and historical. Fine. ---Although estimated at \$190 this item sold for only \$72.50 which indicates a possible question about this item. (This is probably USTMC 41-H-1)

The present whereabouts of these two covers are unknown to the writer, but it would be most interesting to locate them for photographic use in 1869 Times. Again we urge members to submit unlisted transit markings with 1869 issue to C.L. Towle, 4621 E. Don Jose Dr., Tucson, Arizona 85718 for use in the future.

### Listing of Transit Markings -- Section II

- Cent. Pacific R.R., 976-B-1, Central Pacific R.R. Promontory Point, U. T. - Sacramento, Cal., 690 miles, Dec. 29, 1869 from Elko, Nev.
- Cin. & St. Louis R.P.O., 650-B-5, blue, 1870, Ohio & Mississippi R.R., Cincinnati, O. - St. Louis, Mo., 338 miles.
- Dub. To Iowa Falls R.P.O., 759-G-1, Illinois Central R.R., Dubuque - Iowa Falls, Ia., 143 miles.
- Miss. & Mo. R.R., 702-K-1, 1869, Mississippi & Missouri (C.R.I. & P.) R.R., Davenport - Des Moines, Ia., 174 miles.
- N. Y. & Boston R.P.O., 80-G-1, New York, New Haven & Hartford R.R., Boston & Albany R.R., New York, N.Y. - Boston, Mass., 234 miles.
- N. Y. Central R.P.O., 114-I-1 (?), 1870, New York Central & Hudson River R.R., Albany - Buffalo, N. Y., 297 miles, No Illustration.
- Pa. Central R.P.O., 302-L-1, 1870, Pennsylvania Central R.R., Philadelphia - Pittsburgh, Pa., 354 mi.
- Quincy & St. Jo. R.P.O., 810-E-2, 1870, Hannibal & St. Joseph R.R., Quincy, Ill. - St. Joseph, Mo., 207 mi.
- Railroad Way, 645-A-1, 30 x 21 Oval, applied to 'Way' mail brought into Detroit Post Office by various local railroads. On Western Union Envelope with Detroit CDS, Backstamped London, C. W. Aug. 11, 1869. Two #114 for 6c rate to Canada.
- Rens. & Sar (R.R.), 100-C-2, 1870, possible partial. Rensselaer & Saratoga R.R. (Delaware & Hudson), Troy, N.Y. - Rutland, Vt., 100 mi. 'R.R.' missing: may be new variety, partial strike or worn.
- St. Jo. & C. B. R.P.O., 762-F-1, Kansas City, St. Joseph & Council Bluffs R.R., St. Joseph, Mo. - Council Bluffs, Ia., 130 miles.
- Toledo & Chic. R.P.O., 559-O-1, blue, 1870, Lake Shore & Michigan Southern R.R., Toledo, O. - Chicago Ill., 245 miles.
- Toledo & Lafay. R.P.O., 577-F-2, Wabash, St. Louis & Pacific R.R., Toledo, O. - Lafayette, Ind., 203 mi.

1869 Transit Markings

Two additional new 1869 Transit Markings are to be found in the Juring Collection, to be auctioned by Sotheby Parke Bernet at CAPEX in June. They are: Lot 716, "San Fran to Ogden R.P.O." cover to South Westerlo, NY, March 2. And in Lot 720, "Boston & Orleans R.P.O. Aug 15" on cover to Norwich, Conn. \*\*

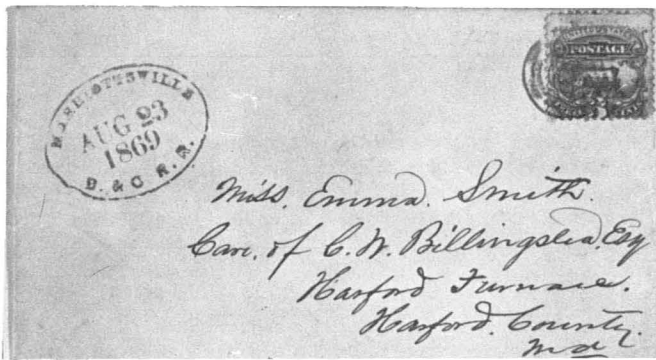


Figure 1-Marriottsville, B. & O. R.R., USTMC 274-S-3, 3 3/4 x 26 Oval, blue, 1869, VII-Station on Baltimore & Ohio R.R. Old Main Line 29 mls. west of Baltimore. 3¢ 1869, blue target.

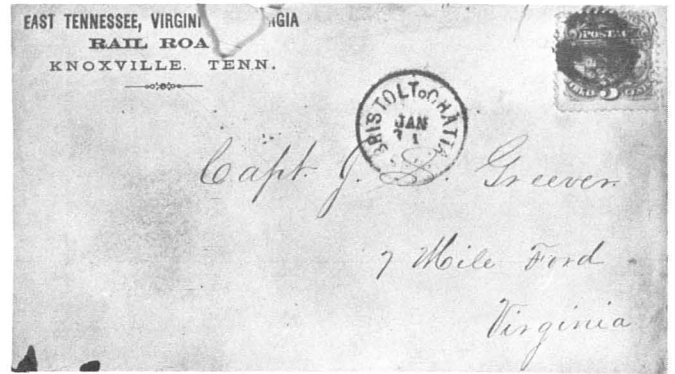


Figure 2-Bristol To Chatta. R.P.O., USTMC 500-H-1, 25, blue, 1870, III. Bristol-Chattanooga, Tenn., 242 miles, East Tennessee, Virginia & Georgia R.R.. Corner card of railroad from Knoxville, Tenn. 3¢ 1869, blue cork killer.



Figure 3-Cent. Pacific R.R., USTMC 976-B-1, 25 1/2, black, 1869, V Promontory Point, U.T.-Sacramento, Cal., 690 miles, Central Pacific R.R. From Elko, Nev. Dec. 29, 1869. Black 'Pinwheel' killer.

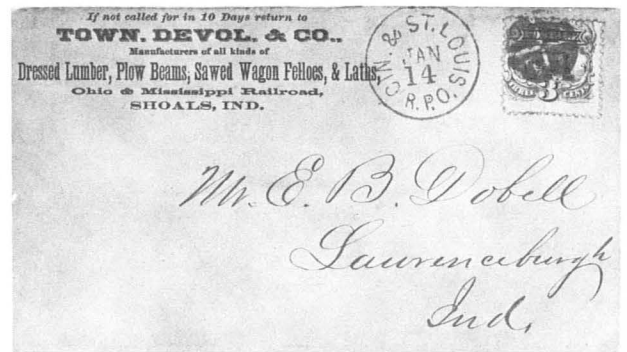


Figure 4-Cin. & St. Louis R.P.O., USTMC 650-B-5, 25 1/2, blue, 1870, III. Cincinnati, Ohio-St. Louis, Mo., 338 miles, Ohio & Mississippi R.R. 3¢ 1869, blue 4 quad killer. Corner card from Shoals, Ind.

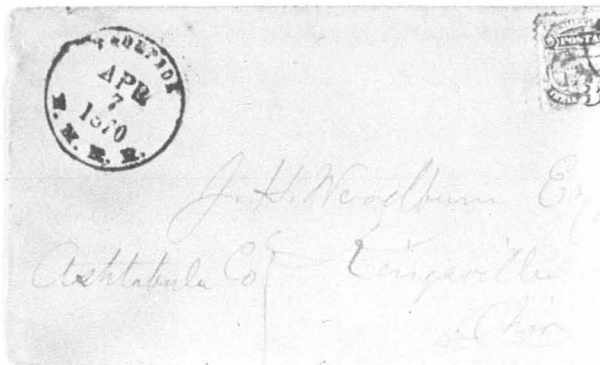


Figure 5-Thompson, N.M.R.R., USTMC 808-S-4, 30 1/2, blue, 1870, VIII, Station of North Missouri R.R. 113 miles northwest of St. Louis. To Keysville, Ohio. Stamp torn, but possibly unique .3¢ 1869 tied by second strike .



Figure 6-Railroad Way. USTMC 645-A-1, 30 x 21 oval, black, 1869, VII. Western Union Telegraph envelope. Detroit C.D.S. Backstamped London, C.W. Aug. 11, 1869. Pair 3¢ 1869 (6¢ rate to Canada). Black grill killers.





976-B-1



650-B-5



759-G-1



702-K-1



80-G-1



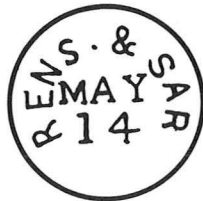
203-L-1



810-E-2



645-A-1



100-C-2(?)



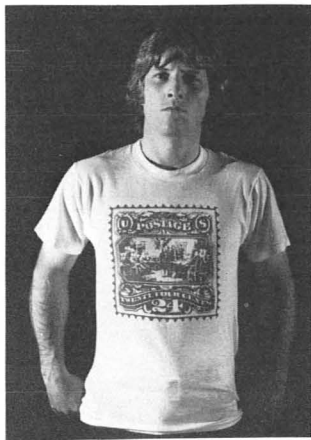
762-F-1



559-0-1



577-F-2



**THE 24¢  
1869  
STAMP  
ON A  
T-SHIRT**

Just the thing for collectors! Green and violet on top quality white blend of 50% cotton, 50% polyester. Great conversation item or gift to that collector friend. Specify large, medium or small.

**\$4.50 ea.**

**3 for \$12.**

**M. H. MACK**

**2133 Luray Ave., Cincinnati, OH 45206**

Buying & Selling

**QUALITY U.S.**

32 Years Experience as a  
Professional Philatelist  
Specializing in the 1869 Issue.  
Auction Agent and Consultant.

**American Philatelic Brokerages**

**John Birkinbine III**

7225 N. Oracle Rd., Tucson, Ariz. 85704

TELE. NO.

(602) 297-3456

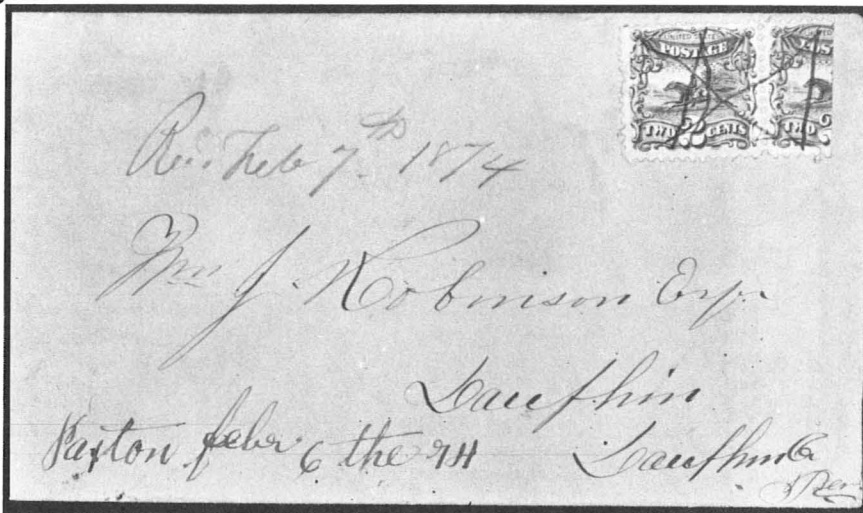
# 2¢ 1869 BIASECTS REVISITED

by Jon Rose

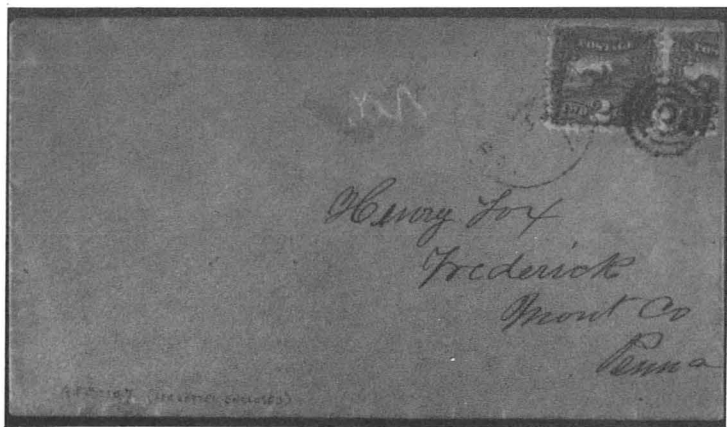
During the two years which have elapsed since publication of the list of 17 1869 2c bisect covers, nine more have surfaced. The original report with background information was contained in the "1869 Pictorial Research Associates Interphil 1976 Publication," which publication is now known as THE REGISTER. Praise the Lord!

In the November, 1976 "Times", I added covers #18-20 to the listing. Now, I am happy to list hereunder these and the six new additions to the group. Most interesting and rarest is #26, which was in the Juring collection and will be sold at CAPEX. This item features a 2c vertical half bisect and attached single tied at Plymouth, Pa. The cover was addressed to Philadelphia, where the bisect was not accepted as postage and a "Due 1" marking added. This is the only cover of the 26 recorded to date, which has any indication of the non-acceptance of the bisect as postage.

Cover #25 listed here, is only the second recorded example of a horizontal bisect, the other having been in the wonderfully variegated holding of the late Stephen Brown, whose collection was sold in 1939.



Cover #24. This 2c bisect, attached to another Post Rider is neatly tied through the perforations joining the stamps by a manuscript cancel. Originating in Paxton, Pa. in 1874, this cover has two enclosures and four manuscript dates, all substantiating authenticity.



Cover #11. Fredrick, Pa., 1876 use with PF Certificate. Lot 619, Siegel auction 5/72, \$625.



Cover #21. One of 5 recorded single 2c bisects on cover. Shepardstown, W. Va.

## ALAN T. ATKINS

ASDA  
APS-USPCS-SPA  
-OLD U.S. COVERS-



WCS  
CSA-USCC-APC  
Phone: 513/831-6781

"GIVE YOUR COLLECTION OUR BEST"

Proudly serving the collector of old U.S. covers, including the 1869 issue.

May we be of service to you? References, please.



Unfortunately, Scott has still not seen fit (once again) to price these items, which are most rare and desirable; and, although authentically used in most cases reported here, nevertheless unauthorized by the government.

Scott does list prices for the 2c Black Jack (#'s 73 & 87), the 10c 1847 (#2), the 3c imperforate (#11) and 12c 1851 (#17), among others. Why not the 2c 1869? \*\*

← Cover #23. Martinsburg, Va., June 17, 1870. PF Certificate; Wolfers sale #58, 7/28-30/77, lot 43. Sold for \$675. The usual 3c domestic rate.

Updated Listing of the 2c Bisect on Cover

No.	Type	Used With	Pos. on Cover	From	To	Date	Tied	Certif.	Reference, etc.
18	Left Vert.	113 attach	LL	Mongaup, NY	Alfred, Me.	not clear	yes		Harmer Hessel Sale, 6/76, lot 688, \$700.
19	Right Vert.	113 attach	UR	Pa.	Gettysburg, Pa.	7/15/72	yes	PF, no opin.	Millard Mack Colln.
20	Left Vert.	2c Reay env. U80	UC	East Clarendon, Vt.	Salem, N. Y.	Nov. 3	circ. Paid	PF ① "favor"	E. H. Coulter Colln.
21	UR diag.	Alone	UL	Shepardstown, W. Va.	Jefferson Co. local	Feb. 16	yes		Marc Haas Colln, fancy wedge.
22	UL diag.	Alone	Cen.	Luray, Va.	Luray, Va. local	3/26/70	yes mss.		Only known 2c entire Luray Tax Notice. Kennedy 1965, Siegel #529.
23	LR diag.	113 attach	UR	Martinsburg, Va.	Altoona, Pa.	6/17/70	yes tgt.	PFC	Wolfers #58 sale, lot 43, \$550.
24	LV	113 attach	UR	Paxton, Pa.	Dauphin, Pa.	2/6/74	yes mss.		B. E. Chapman Colln. 4 dates authenticate, C. Storch sale 6/77.
25	Low. Hor.	Alone	UR	New York City	Local use	?	yes		2nd NYC use; 2nd hor. bisect.
26	Vert.	113 attach	Unk	Plymouth, Pa.	Philadelphia	1/20 Phil. Rec'd.	yes	PFC	Bisect not accepted at Phil. "Due 1". Soethby's Juring sale, lot 675.

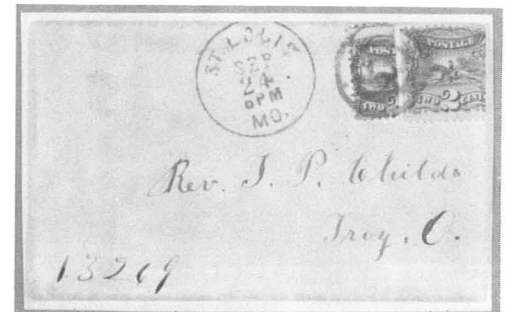
① PF Said, "cancelled by favor and did not pass through the mails." This cover could have passed through the mails. There is no direct evidence to the contrary. (JWR)

**BISECTS GALORE**

The best chance ever to pick up an 1869 Bisect on piece or full cover will be coming up within the next month or so. The Margaret L. Wunch sale, to be held May 12 by Robert Siegel puts on the block 3, count 'um - three, 3c bisects on piece of Tax Notice used at Luray, Va. Also, in the same sale is the only known 2c bisect on full Luray Tax Notice.

Meanwhile, at the Sotheby Parke Bernet CAPEX Juring sale on June 14, will be found the "St. Cloud, MN" 2c bisect (Rose #8) and the "Plymouth, PA" 2c bisect (Rose #26) covers. And, as if these weren't enough, the LUFF 3c Bisect tied to full Luray, Va. will be found in a later lot.

Now who wants to put together the two Luray entires, and make a nice page or two for exhibition. Some PRA member, we hope!



Cover #14. St. Louis, MO, September 24. Siegel sale, March 22, 1956, lot 288. Note time of day in circular date stamp.

JUHRING COLLECTION FOLLOW-UP by Cosmopolitan

Sotheby Parke Bernet, the New York and London art auctioneers who have recently expanded their activity to include stamps, will sell a portion of the Juhring collection, which I described in the last issue of "1869 Times." The rest of the Juhring collection will be sold by Stanley Gibbons, presumably in Europe. The first of two or more SPB Juhring sales will be held at CAPEX in Toronto, June 14, 1978.

The type for the catalog for this sale is being set as I write these words. I'm reliably informed that about 70 percent of Juhring's 1869 material that went to SPB, is included in this one sale. I avoid the question of how much of his 1869 material went to Gibbons and how much went to SPB, because no one seems to know the answer. The CAPEX Sotheby sale includes the cream of Juhring's 1869 proof and essay material, including all his safety-paper essays, close to 100 of them. Also there is a staggering array of large-die trial-color essays and proofs, many more of these than have ever been offered before at one time. The auctioneer's estimate for the essay portion of this sale alone, exceeds \$200,000.

The sale also includes stamps and covers. I am reliably informed that the sale includes two covers heretofore unrecorded: a cover bearing the 24c 1869 re-issue, and another cover bearing the 10c 1869 re-issue. Additionally, there is a wide variety of covers showing the regular stamps in unusual combinations to unusual destinations. How about a cover with 10c 1869, along with a 15c grilled Lincoln and a 3c Banknote, to the Cape of Good Hope? How about a cover with pairs, respectively, of the 2c, 3c and 10c 1869's? How about a 24c grilled Washington (Scott 99a) with 10c 1869 on cover to Bangkok? Or the same combination to Hong Kong? This is just a taste of what will be offered. As with the Hessel collection I wrote about earlier, condition is something of a problem. Juhring was more interested in postal history than exhibition. The covers are generally sound, the stamps sometimes not. Still, this is a great and fascinating collection. Get the catalog and see for yourself. And always remember: You Read It First in "1869 Times." \*\*

DEPARTMENT OF AMPLIFICATION - by Michael Laurence

In "1869 Times" #8 (page 3), I showed a cover from Cambridge, Mass. to Denver, Colorado, Ty., addressed to "Professor Jules Marcou - Geologist." This was an interesting address, which I didn't explore. Recently, I read The Education of Henry Adams. A good portion of this book relates to the social and political history of the 1860's and 1870's, and thus recommends itself to collectors of the period.

In his Chapter 20, Adams tells about a government sponsored venture called the Fortiety Parallel Survey, which was geological survey funded in 1869 for study of the western territories. This project was largely controlled by Harvard professors. Adams himself, then professor of medieval history at Harvard went along on the junket, at least for the summer of 1871. He writes about it eloquently and ironically. He says he much enjoyed killing buffaloes, but didn't like cutting them up. While I haven't researched it further, I'm quite convinced that Professor Marcou, geologist, whose cover was posted in Cambridge, was part of the Fortieth Parallel Survey. Most likely he was a friend of Adams as well. \*\*

## **OUR COMPREHENSIVE 1869 STOCK**

***INCLUDES MANY ESSAYS (including rarer ones),  
PROOFS, STAMPS (all values unused and used),  
AND COVERS.***

### **WHAT DO YOU NEED?**

**SELECTIONS GLADLY SENT ON APPROVAL AGAINST SPECIFIC REQUESTS.**

#### **MAY WE HEAR FROM YOU ?**

Satisfaction or Immediate Refund — Gladly Sent on Approval with References  
Installation Payment Terms if Desired — (No Interest or Carrying Charges)  
Master Charge Accepted on Orders over \$100

#### **JACK E. MOLESWORTH, INC.**

APS  
SPA

88 BEACON ST., BOSTON, MASS. 02108  
(617) 523-2522

CSA  
USPCS

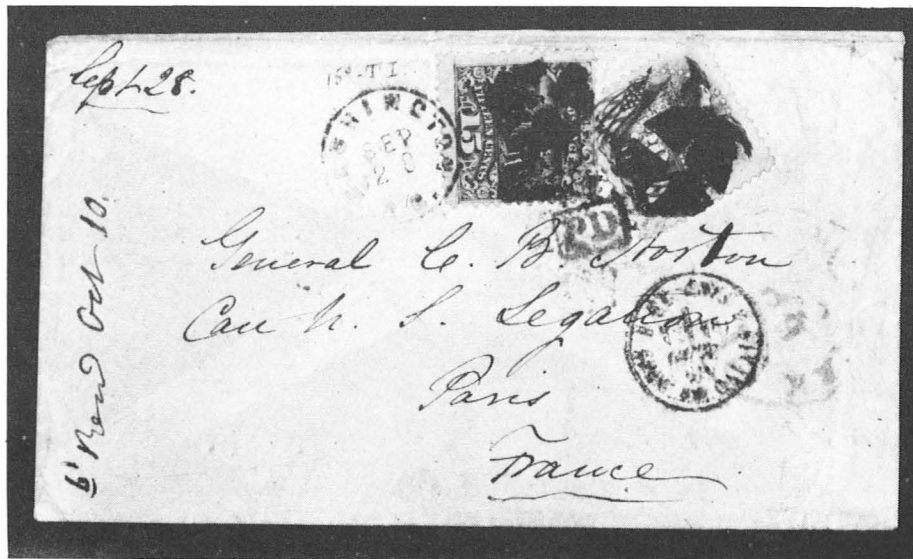
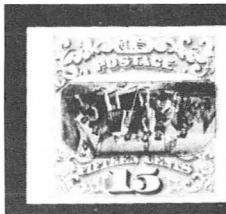
# Sotheby Parke Bernet Stamp Auction

announces  
a Sale at Auction to be held in Toronto

## THE JUHRING ESTATE: PART I Sold by Order of The Executors

A major collection of United States 1869 issues, including: proofs, essays, stamps, cancellations, and covers comprising usages and rates

**Auction: Wednesday, June 14**  
To be held in Toronto in conjunction with CAPEX



On view • in Toronto: at CAPEX International Postage Stamp Exhibition  
• in New York: May 31, June 1 and 2 at 980 Madison Avenue  
Illustrated catalogue \$4/\$5 with prices realized • Order catalogue  
with check enclosed to Sotheby Parke Bernet Stamp Auction Co., Inc.,  
158 Deer Hill Avenue, Danbury, Connecticut 06810 tel. 203/743-4458

**We are currently accepting property for future sales  
Available for appraisals and guidance on philatelic properties**

## AUCTION ACTION - - Like a duel, except you don't know the opponent.

by Michael C. O'Reilly



Editor's Note: We have a special report this edition on the Dave Baker sale written by Jon Rose, who was on hand for the fireworks. Michael O'Reilly's column follows Jon's report.

Many PRA members know or have heard of John David (Dave) Baker, of Indianapolis. Quite a few, I am sure, bid recently at the 526th sale of Robert A. Siegel, New York City. A portion of Dave's covers, a select group of 232 lots, were sold at that auction, held on April 4, 1978. There were some 38 lots of 1869 covers (the whole auction was covers), which sold for a total of more than \$72,000 and averaged approximately \$1900 per lot!

The auction room was uncommonly crowded with more than 50 people that Tuesday afternoon. In attendance were high-powered specialists in every period: 1847, 1851, 1861, 1869 and Hawaii-US. Among them were Louis Grunin, Ryohei Ishikawa, Duane Garrett, and Creighton Hart. A number of dealers were also there, most acting as agents. Among others there were William Bilden, Al

Zimmerman, Seymour Kaplan, Bill Roscher, William Lea and Irwin Weinberg.

The room was very stuffy and hot. Bob Siegel was in poor voice, suffering from a throat condition, so brother Malcolm assisted. By the time the 1869 lots rolled around, bidders were shell-shocked. The order bids on the books had achieved little success against the floor competition. Three choice 1847 covers in 3 lots had sold for a total of \$69,500. And the famous \$2.12 rate cover to Augustine Heard & Co. (with 2- 90c 1861's, a 30c 1861 and a 2c Black Jack) had been sold to Ishikawa for \$50,000!

I won't cover all the 1869's, but will try to hit the high spots. Large pieces and multiple usages as well as the high values (15c, 24c and 30c) brought the top prices, perhaps record prices. A horizontal pair and a single 1c Franklin (#112) tied by a red cog and matching Millersburgh, OH (Ex Newbury) was gavelled down for \$500 -- to the book. Two pairs of the same stamp on Jan., 1870 cover to France partially prepaid (short Paid) to France (Ex Krug, signed by Ashbrook), went for a fat \$2000. This type cover almost always has two 2c 1869 stamps. Kaplan bought it.

Kaplan sat in the front row and bid aggressively, but his gratuitous remarks irritated Bob Siegel. However, the repartee provided the tense audience with comic relief. Kaplan probably purchased more lots than any other single bidder, although he was acting for a number of individuals.

There were only three 2c Horse & Rider lots, but they sold for \$250, \$850 and \$5750 respectively. The "cheapest" item was a 2c tied on 1870 printed bankruptcy notice from the U.S. District Court in San Francisco. But what was extraordinary was the "RETURNED TO WRITER" auxiliary marking in axehead.

**BAKER  
SALE**

Secondly, at \$850, was a horizontal strip of three and a vertical pair of the 2c brown tied by black grids and red "New York Paid All Direct" handstamp to Germany. This neat cover also had a merchant's corner card. Although slightly mended, the cover elicited spirited bidding and went to a PRA member. The biggie was the 2c times 13 cover to Prussia from Hiogo, Japan, via San Francisco and New York City. Ten of the 2c stamps were contained in a vertical block of 10, cancelled in manuscript. This unique item (who has ever seen such a thing), Ex Krug, sold for \$5750 to Ishikawa.

A 3c Locomotive and a 15c Lincoln grill (#98) on 1869 cover to Sweden from San Francisco sold for \$900 to Lea. Four other 3c Loco covers sold for modest sums, except for a Seymour-Blair campaign cover with a beautiful corner illustration which realized \$350, and went to a PRA member.

Six of the 6c Washington covers brought snappy prices, as they were choice and unusual. Top number was the single to New Brunswick tied by a two-line "St. John NB/Ship Letter" handstamp. This very fine Ex Newbury showpiece traded hands at \$2700 with a number of collectors on the floor dueling for it. A 6c used with another 6c 1869, a 1c Franklin, and a 3c Locomotive on a 2c Jackson U50 entire (buff, Die III) brought a healthy \$1250, again to a PRA member. This was a registered letter of single weight and most probably this combination of postage to make up the 18c charge is very rare, if not unique.

There were 11 covers with the 10c Shield and Eagle. Michael Laurence contracted rigor mortis of the arm at this point, as might be expected. He came away with at least two choice items: a phantom rate 20c cover, sent April 11, 1870 from Chicago to Lyon, which sold for a mere \$1200 and a joint 10c, 3c and 6c 1869 cover to Italy for \$1350, Ex Gibson, Knapp and West. A 10c plus 12c cover to India (Bissell Correspondence), also Ex Gibson, West, brought \$1650 and sold to Bill Lea. A 12c stamp on a 3c pink entire (U59) to Switzerland sold to Irwin Weinburg for a mere \$450.

Next, a 15c Type I to Prussia, Ex Newbury, sold for \$1150, a belated realization of the rarity of the genuine Type I 15c covers. Another with a 3c 1869 along making up the 15c registry and 3c domestic usage, Gonzalez, Texas to Boston sold for about the same. (I was busy with the previous lot and missed exactly.)

A 15c Type II to France, choice, and like many Baker covers, Ex Newbury, sold for \$1350. Another 15c Type II to Germany with San Francisco postmark sold for less. Then the big ticket: A 24c cover (triple rate domestic registered large folded letter), the stamp tied by black grid, boomed up to \$7500 (a record ?) with several PRA members on the floor choking in the dust.

Next was a 15c Type I, 24c and 3c Locomotive cover from Hiogo to Yokohama, Japan, all tied by corks. This branch line cover, Ex Gibson & West, is the subject of much controversy. Several collectors believe that one or more of the stamps don't belong on the cover. The price? \$16,500. The buyer? Ishikawa. Then, a lovely and rare (two known) 30c cover to Mexico from New York sold for "only" \$9000. It went for \$2000 in 1961 at a Newbury sale (also by Siegel). This triple rate cover bore a black "5", presumably for Mexican internal postage. The stamp is tied by a black rosette cork and NYC CDS.

A disputed 6c reissue cover with pair of #146, 2c red-brown Nationals, paying the 10c steamship rate to Boston, allegedly originating in Panama, sold for \$2100 to Kaplan. A corner card said: "Panama Railroad Company." Lastly, a cover with a 10c 1869 and a Hawaii #32 5c, used from Honolulu to San Francisco, sold for \$3750. Both stamps were badly off-center, but the cover had interesting US and Hawaiian CDS's. It was mailed on April 21, no year date obvious. This was the last lot in a memorable sale -- a prelude to the Wunsch Sale in May at Siegel. One source said that the Baker lots grossed \$750,000!

(JWR)

AUCTION ACTION by Michael C. O'Reilly

After the magnificent J. David Baker sale covered above, one is at a loss for words. The rarity and beauty of the 1869 lots, not to mention the entire sale, speak highly of a knowledgeable student and a true connoisseur of classic United States philately.

The past quarter saw more Waterbury Running Chickens offered than this writer can remember seeing in a long time. Two copies were sold, each a single off-cover stamp. The first was a 3c Locomotive sold by Sotheby Parke Bernet on March 7-9 in sale #13. This stamp was contained in lot 1392, was centered to top and sold for a healthy \$1400. The other example was a single 6c Washington, sold in Santa Monica, CA by George Alevizos in his Sale 14 on March 27-8. We are pleased to show this gem and others from this sale in this edition. Estimated to bring \$2000, this very fine strike of the Running Chicken brought \$2600. (No doubt, all are familiar with the magnificent Running Chicken cover which sold for \$45,000 recently, but how many remember a single 3c Locomotive tied to cover and the famous Chicken sold by Siegel in his 1965 Rarities Sale? Who can report more than these four pieces to update the record book?)



Several items appearing in the Alevizos Sale in March.

Other nice items in the Alevizos sale included a 3c Bisect on a piece of a Luray, VA tax notice. The sale price of this lot (164) went up to \$575! The sale also had three 1869's cancelled by the Hiogo, Japan double circle postmark. Always popular items, the two copies of the 2c and one of the 10c sold for \$115, \$85 and \$130 respectively. Lot 168 held a jumbo margin 12c cancelled by a neat maltese cross. It brought a neat \$210 (CV \$45) and we are pleased to illustrate this stamp also. An especially nice used 24c in lot 171 (CV \$250) brought a respectable \$360.

To list a few more lots from the SPB sale, we notice some fine postal history covers which are sure to please. One scarce combination was seen in lot 1387; a 1c buff used with a 2c Black Jackson entire (U54), which sold for \$270. Lot 1401 held a scarce cover bearing 3 copies of the 10c and a single 15c Type II. This combination was a triple rate cover to France from Pittsburgh. The selling price climbed to \$1800.

Action on the west coast never ceases, as the recent sale held by the Wolffers firm points out. We refer to sale 65 held February 23-5. Among the interesting 1869 lots, we note an unused 15c Type I (lot 156). Without gum, centered to the upper right and with a corner perf crease, it still realized an even \$500. An exceptionally nice used Type I followed in lot 157. The neat black petal cancel brought the selling price to \$220 (CV \$130). Bringing full catalog (\$750) was lot 160, a nicely centered unused 24c 1869. The stamp was without gum, but very nicely centered indeed. However, without a doubt, the outstanding lot of the sale was a super copy of the 30c inverted center. Description is not necessary, as Mr. Wolffers showed the stamp in his ad in the previous issue of "1869 Times." This extremely fine invert sold for \$29,000, which is the highest price we can remember for this stamp. Congratulations, Mr. Wolffers!

In welcoming a new auction house to these pages, little introduction is needed for the firm of Robson Lowe. The sale we are covering was held under the International wing of his organization, down in Bermuda on the 26th of January. Considering this past winter, the balmy climate was as much an inducement to attend as were the stamps for sale. An unused 15c Type II (lot 136) sold for \$260. It had nice centering, no gum and a slight thin in the top left corner. Lot 241 held a fine used 90c Lincoln. The stamp had bright colors and minor creases in two corners. It sold for \$375 (CV \$525). Lot 253 was an exceptionally fine set of the bicolored plate proofs with inverted centers. Shown to their true beauty with color plates, this set realized \$8750 (CV \$6000).

The Daniel F. Kelleher Co. in Boston sold a bevy of '69 reissues in their February 3rd Sale (#536). Most brought double catalog, as Mr. Richmond showed them off like fresh peaches with full color illustrations. (Continued...)

