



Two concentric boxes with 8 inner sections

9/13/1874
to
6/22/1875



C

THE SOLE KNOWN NYCFM CANCEL TO BURMA

Dec 19, 1874 to Burma carried on NGL Line's *Hansa* going via Southampton 31, London Jan 1, 1875, departing 8 to Brindisi (seapost handstamp on the rear shown below), Alexandria 11, Suez, P & O Line's steamer *Avoca* arriving Bombay 20, Calcutta 24, and Bassein Feb 1.

The outer and inner 'diamonds' of this cancel often over or under-inked.

Postage paid the 28¢ single treaty rate via Great Britain and Brindisi effective from Jan 1871 to Jul 1875.



On the reverse



Dec 19, 1874 to Dalmatia, Austria carried on NGL Line's *Hansa* going via Bremen Jan 2, 1875, Zara 8, arriving Orebich 10 (today's Croatia).

Postage paid the 6¢ NGU direct mail rate.

Dec 24, 1874 supplementary mail to Italy carried on Hapag Line's *Frisia* going via Plymouth Jan 3, 1875, arriving Naples Jan 7.

Postage of 20¢ paid the 10¢ NGU direct closed mail rate via England plus the 10¢ supplementary mail fee.



Jun 12, 1875 to the Hawaiian Islands by rail to San Francisco then by Pacific Mail Steamship Company's steamer to Oahu (with 608 square miles, the third largest of the Hawaiian Islands).

6 NYCFM covers are known to Hawaii. Postage paid the 6¢ treaty rate.





Concentric boxes
9/5/1874
to
10/31/1874



Sep 5, 1874 supplementary mail to England carried on Inman Line's *City of Richmond* going via Queenstown 14, arriving London 16.

This is the earliest known use of this cancel.

Postage of 12¢ paid the 6¢ British mail treaty rate plus the 6¢ supplementary mail fee.



Star within a star

9/17/1874
to
11/30/1874

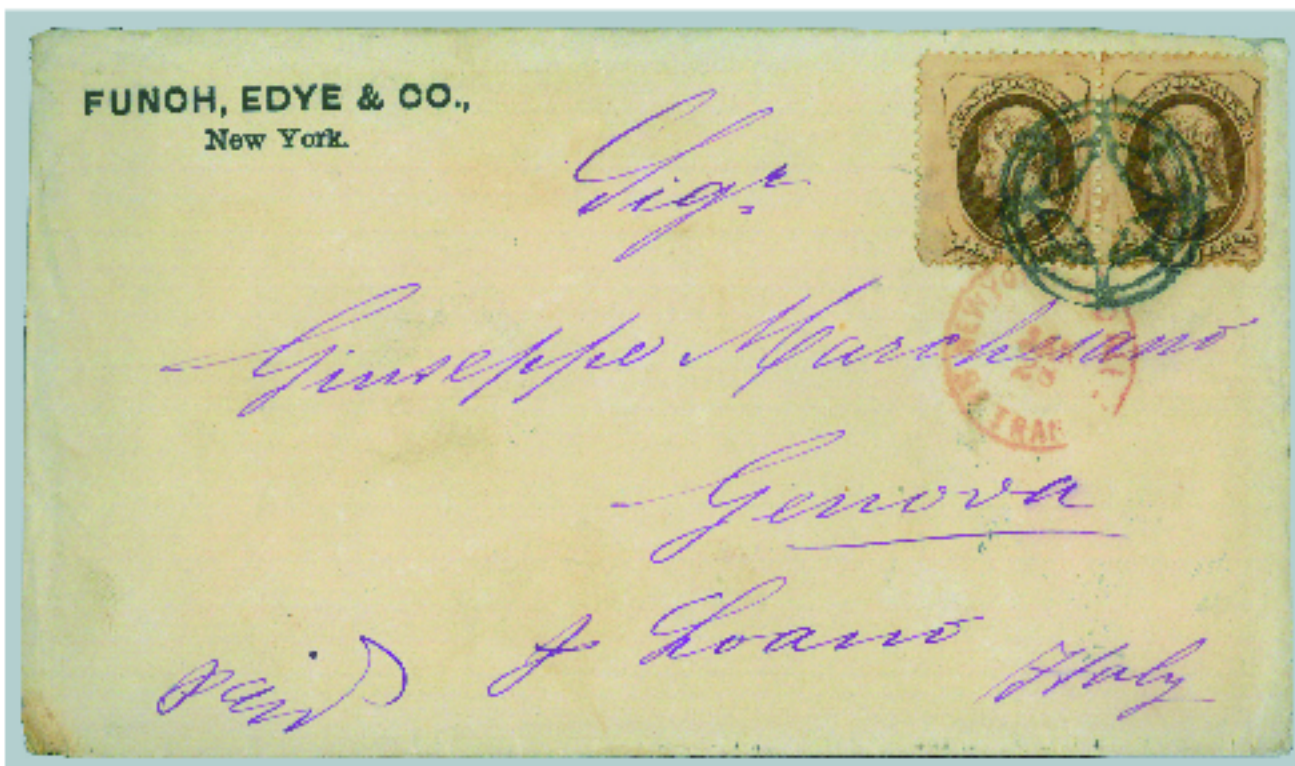


C

DUAL COUNTRY FRANKING US/GB STAMPS

Sep 24, 1874 to East Grinstead, England (redirected to Dorset) carried on Hapag Line's *Thuringia* going via Plymouth Oct 4, then East Grinstead, arriving Shaftesbury 7.

Postage paid the 6¢ British mail treaty rate plus a G.B.1p red for the redirection.



■ 'Compass rose'
9/18/1874
to
5/1/1875



Jan 28, 1875 to Italy carried on Hapag Line's *Silesia* going via Plymouth Feb 8, Alessandria, arriving C
Genoa 12. **10 covers are known with this cancel.**

Postage of 20¢ paid the double 10¢ Italian closed mail rate.



■ Half shaded star
in a circle
10/1/1874
to
12/14/1874



C

Oct 6, 1874 to Austria carried on Eagle Line's *Lessing* going via Hamburg 18, arriving Fiume 22.
Fiume, then a city in the Austrian-Hungary Empire, is now located in Croatia.

There are 10 covers known with this cancel. Postage paid the 6¢ NGU direct mail rate.



8 geometric areas in a circle
10/17/1874 to 11/14/1875

Oct 24, 1874 supplementary mail to Prussia carried on NGL Line's Main via Bremen Nov 6 arriving Berlin 7. 12¢ postage paid the 6¢ NGU direct mail rate plus the 6¢ supplementary mail fee.



BONA FIDE NYCFM CANCEL USED DOMESTICALLY

Dec 1874 to New York City.

This cover, processed in the Foreign Mail Department, was then passed to the Domestic Department.

Postage paid the 1¢ circular mail rate.



'Starburst'
11/25/1874 to 2/27/1875

Dec 14, 1874 to Switzerland carried on Eagle Line's Schiller to Hamburg 27, Basel 30, Zurich 31, arriving Einsiedeln the same day.

Postage paid the 8¢ Swiss closed mail rate via Hamburg.



■ 'Starburst'
12/8/1874
to
12/20/1874



Dec 8, 1874 to Switzerland carried on the last voyage of Eagle Line's *Klopstock* going via Hamburg 21 enroute to Basel 23, St. Gallen 24 arriving Speicher, Appenzell, the same day.

This is the earliest known of 3 covers with this cancel.

As with some other NYCFM cancels this is common off-cover but rare on cover.

Postage paid the 8¢ Swiss closed mail rate via Hamburg.



■ 4 pointed star in a circle

12/12/1874



C

Dec 12, 1874 to England carried on White Star Line's *Oceanic* going via Queenstown 21, arriving London 23.

This is one of two covers known with this cancel, in use for just one day.

The crudeness of the carving suggests a cork device.

Postage paid the 6¢ British treaty rate.



Central cross goes to the apexes of the inner star

12/31/1874
to
2/17/1875



C

ORIGINATING OUTSIDE NEW YORK CITY YET ATTRACTING A NYCFM CANCEL

Newark N.J. Feb 15, 1875 to India via New York City where it departed 17 on Cunard Line's *Abyssinia*, arriving Moradabad Mar 28.

This cover shows the last known use of this cancel.

The cover bears mixed US issue stamps - an 1866 24¢ and two 1870 Bank Note 2¢ stamps.

Postage paid the 28¢ British treaty rate by Brindisi.



Originating datestamp





Dec 31, 1874
supplementary mail to Switzerland carried on Hapag Line's *Westphalia* going via Plymouth and London Jan 11, 1875, arriving Basel 14.

This is the **earliest use of this cancel and the sole known with supplementary mail**. Postage paid the 10¢ closed mail rate plus the 10¢ supplementary fee.

Jan 23, 1875 to France carried on French Line's *France* going via Havre 4, Brest and Aigre.

5 covers are known with this cancel. Postage paid the 9¢ French treaty rate.



12/23/1874
 to
3/30/1875

'Fouled anchor'

Dec 23, 1874 to Italy mourning cover carried on Cunard's *Russia*, going via Queenstown Jan 1, 1875, arriving Rome 7. 16c postage overpaid the 10¢ NGU direct mail rate.





Two offset 4 pointed stars
12/9/1874 to 12/24/1875

Dec 9, 1874 to France, carried on Cunard Line's *Algeria* going via Queenstown 19, Calais 21, arriving Paris the same day. **This is an earliest known use of this cancel.** Postage paid the 9¢ French mail rate.

C

Dec 24, 1874 to Uruguay carried on Steamer *Ontario* arriving Montevideo Feb 13, 1875 **Two NYCFM covers are known to Uruguay.** Postage paid the 18¢ rate by American packet to Rio de Janeiro, then British packet to Montevideo.



Jan 6, 1875 supplementary mail to Italy carried on Cunard Line's *Cuba* going via Queenstown 16 and Liverpool, arriving Leghorn 21. Postage should have been the 10¢ direct rate plus the 10¢ supplementary mail fee, a total of 20¢, so postage of 18¢ was underpaid.



1875 was a pivotal year for NYCFM cancels. Production reached record levels in the first half of the year, yet in Sep declined abruptly. The reasons might be:

- a) on Jul 1, 1875, provisions of the *Universal Postal Union (UPU)* took effect. Was this felt to be a suitable time for standardisation prior to the appearance of the first steel ellipse cancel in 1876?
- b) on Aug 28, 1875, the Post Office moved to new purpose-built premises (see 8-11). Was this seen as an opportunity to reorganise working practice?



■ 'Rosette'

1/9/1875



C

THIS IS THE SOLE KNOWN USE OF THIS CANCEL ON AN ENTIRE

Jan 9, 1875, 1¢ Postal Card to Prussia carried on NGL Line's *Hohenzollern* going via Bremen 23 then by train to Posen.

Postage paid the 2¢ postal card rate.





Central 8 diamonds surrounded by 8 boxes
 1/11/1875 to 7/27/1875

Feb 24, 1875 to India carried on Hapag Line's *Frisia* going via Plymouth Mar 8, London 9, then train to Brindisi and Alexandria to Suez. Then P & O steamer *Delhi* via Aden to the Bombay Sea Post office Apr 4, arriving Moradabad Apr 7.

Postage paid the 28¢ British mail rate via Brindisi.



The clerk appeared to change his mind as to whether the letter was under or over paid

THE SOLE KNOWN NYCFM COVER TO TUNISIA
 DUAL COUNTRY FRANKING US/ITALIAN STAMPS

Mar 20, 1875 to Tunis carried on White Star Line's *Republic* going via Queenstown 30, Brindisi, arriving Tunis Apr 12. The outer circle of the larger NYCFM cancels often broke due to an even application as in this case.

Postage paid the 15¢ German closed mail rate via England and Brindisi. The imposition, on arrival, of the Italian 1 and 2 lira postage due stamps, equating to US 57¢, is inexplicable.



6 inner diamonds surrounded by
6 inward pointed arrowheads

2/26/1875
to
5/11/1875



THE SOLE KNOWN USE OF NYCFM GEOMETRIC CANCEL WITH A STEAMSHIP COMPANY'S PRIVATE LETTER STAMP

Apr 23, 1875, via Danish West Indies to Venezuela carried on United States Brazil Mail Steamship Company's *Merrimack*, arriving St. Thomas 30. Schon Willink, the Hapag agents, then affixed the Hapag private stamp for carriage on feeder steamship *Rhenania* for transit to Carupano which departed May 2.

This is the sole known NYCFM geometric cancel used to Venezuela.

The US steamship postage paid with the US 10¢ stamp. The Hapag charge was paid with the 10¢ Hapag stamp.



struck on
arrival at St.
Thomas
(on the rear)



struck on
departure from St.
Thomas
(on the front)

HAPAG stamps were valid only for letters carried on the Company's steamships, transporting mail to and from ports in the West Indies as well as Panama and Venezuela. They were kept by the HAPAG agent, Schon Willink and Company and were applied to letters with destinations enroute from St. Thomas by the ship's purser. The stamps were in use from early 1875 until individual states joined the U.P.U. 1877-80 (St. Thomas did not become a full member of the U.P.U. until September 1, 1879).



Central cross in double circle

1/13/1875
to
1/23/1875



C

Jan 13, 1875 to England carried on Cunard Line's *Algeria* going via Liverpool 23, arriving Teignmouth 25. **5 covers are known with this cancel.**

Postage paid the 6¢ British treaty rate.



Central cross surrounded by 8 boxes

2/27/1875
to
3/26/1875



ORIGINATING OUTSIDE NEW YORK CITY YET ATTRACTING A NYCFM CANCEL WITH DUAL US/CUBAN COUNTRY FRANKING

From Cuba to Spain via New York departing Mar 3, 1875 carried on Cunard Line's *Algeria* going via Queenstown and London 14, enroute to Barcelona. The cover bears **US Issues 1869 2¢ and six 1873 10¢ and two Cuban issue 50 centavos stamps.** US stamps were not valid in Cuba but were available from the US Consul.

The total U.S. postage of 62¢ overpaid the total due of 52¢ made up of the double 10¢ steamship rate to the U.S. plus the 32¢ rate by British mail via France for a letter between one-half and two thirds of an ounce.



3/13/1875
to
8/17/1875

8 inner diamonds
surrounded by
arrow-heads

Apr 9, 1875 to Italy carried on NGL Line's *Neckar* 10 going via Southampton 21, arriving Rome 24.

Postage of 16¢ overpaid the 11¢ NGU closed mail rate.



3/29/1875
to
5/8/1875

8 radial spokes
surrounded by
arrow-heads



ORIGINATING OUTSIDE OF NEW YORK CITY YET ATTRACTING A NYCFM CANCEL

May 8, 1875 Wells Fargo cover to England went by Pacific Mail Steamship Company's steamer from Mexico to San Francisco, then by train to New York from where it departed (from Boston May 9) on Inman Line's *City of Paris*, arriving Liverpool 18.

This is the latest of two Wells Fargo covers known originating in Mexico with NYCFM geometric cancels. The envelope was bought in Mazatlan. The 3¢ franked entire, bought from Wells Fargo in Mazatlan, covered the carriage between Mexico and New York. Fargo also applied the U.S. 3¢ stamp, which, added to the 3¢ nominal face value of the franked entire, paid the 6¢ rate to G.B. The enclosure was in an envelope pasted onto the rear.



Mar 29, 1875 to Algeria carried on Guion Line's *Wisconsin* 30 going via Queenstown Apr 10, Calais 12, arriving Constantine 17.

This is the earliest known use of this cancel and one of only three known NYC FM uses to Algeria. Postage paid the 1874 9¢ treaty rate.

Apr 7, 1875 supplementary mail to France carried on Cunard Line's *Algeria* going via Queenstown 17, Paris and Lyon 19, arriving Pont d'Ain 20.

Postage of 18¢ paid the 9¢ French treaty rate plus the 9¢ supplementary mail fee.



Apr 22, 1875 to the Hawaiian Islands going by train from New York to San Francisco, then Pacific Mail Steamship Company's steamer to Punalu'u.

Postage paid the 6¢ treaty rate.





8 straight wedges

3/4/1875
to
10/21/1877



Aug 29, 1876 supplementary mail to Scotland carried on Cunard Line's *Algeria* going via Liverpool Sep 9, arriving Glasgow the same day.

Postage of 10¢ paid the 5¢ U.P.U. rate plus the 5¢ supplementary mail fee.



Datestamps on the reverse

Aug 23, 1876 to Japan carried from New York City by train to San Francisco, then Pacific Mail Steamship Company steamer, arriving Yokohama Sep 27.

Postage of 25¢ paid the 5x5¢ treaty rate to Japan (effective Apr 1, 1876 to Mar 30, 1879).